

Excellent Integrated System Limited

Stocking Distributor

Click to view price, real time Inventory, Delivery & Lifecycle Information:

[Molex Connector Corporation](#)
[0513360910](#)

For any questions, you can email us directly:

sales@integrated-circuit.com

10 9 8 7 6 5 4 3 2 1

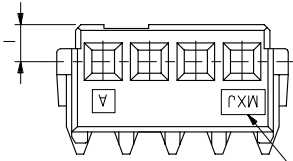
| 番号 NO. | 名称 NAME | 原料 MATERIAL | 数量 QTY | 仕上げ FINISH |
|-----------|-------------------|--------------------------------------|-----------|----------------------------|
| ① | ハウジング HOUSING | PBT PBT | I | ガラス30% G.F.30% U.L94V-0 |
| ② | ターミナル TERMINAL | りん青銅 (+0.2) PHOSPHOR BRONZE(+0.2) | N | 全体錫メッキ PRE-TINNED |

注) NOTES

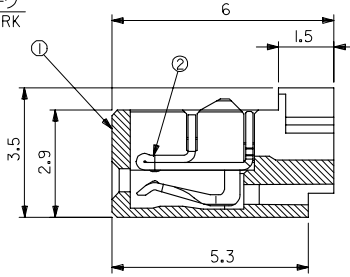
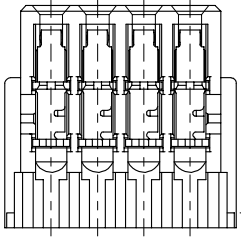
1. 原料および仕上げ: 表参照
MATERIAL AND FINISH : SEE CHART

△製品番号
MATERIAL NO.
51336-***I*

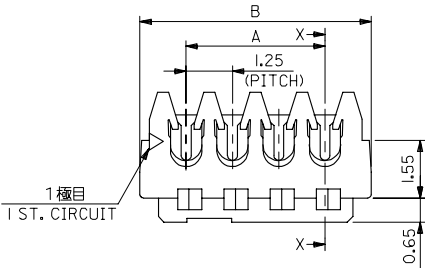
極数 CIRCUIT SIZE(O2 ~ 20)
色 COLOR IO: 白色 WHITE



トレードマーク
TRADE MARK



SECTION X-X



| | | | |
|-------|-------|----|------------|
| 26.25 | 23.75 | 20 | 51336-20I* |
| 25 | 22.5 | 19 | 51336-19I* |
| 23.75 | 21.25 | 18 | 51336-18I* |
| 22.5 | 20 | 17 | 51336-17I* |
| 21.25 | 18.75 | 16 | 51336-16I* |
| 20 | 17.5 | 15 | 51336-15I* |
| 18.75 | 16.25 | 14 | 51336-14I* |
| 17.5 | 15 | 13 | 51336-13I* |
| 16.25 | 13.75 | 12 | 51336-12I* |
| 15 | 12.5 | 11 | 51336-11I* |
| 13.75 | 11.25 | 10 | 51336-10I* |
| 12.5 | 10 | 9 | 51336-09I* |
| 11.25 | 8.75 | 8 | 51336-08I* |
| 10 | 7.5 | 7 | 51336-07I* |
| 8.75 | 6.25 | 6 | 51336-06I* |
| 7.5 | 5 | 5 | 51336-05I* |
| 6.25 | 3.75 | 4 | 51336-04I* |
| 5 | 2.5 | 3 | 51336-03I* |
| 3.75 | 1.25 | 2 | 51336-02I* |

51336-***I*

| | |
|----------------------|--------------|
| 材料 MATERIAL | SEE CHART |
| 仕上げ FINISH | SEE CHART |
| 適用電線範囲 WIRE RANGE | AWG #26, #28 |
| 被覆外径 INS. RANGE | φ0.8 - φ0.9 |

| | |
|-------------------|------------|
| RELEASED | 2005/11/25 |
| EC NO. J2006-1346 | |
| DRW: MABEI | 2005/11/28 |
| CHK: K. TOYODA | |
| APP: N. UKITA | 2005/11/30 |

| GENERAL TOLERANCES (UNLESS SPECIFIED) | |
|--|-------|
| 10 UNDER | ±0.2 |
| 10 OVER 30 UNDER | ±0.25 |
| 30 OVER | ±0.3 |
| ANGULAR | ±3° |
| DRAFT WHERE APPLICABLE MUST REMAIN WITHIN DIMENSIONS | |

| DIMENSION STYLE MM ONLY | |
|----------------------------|-----------|
| DRAWN BY | DATE |
| M. NABEI | '05/10/24 |
| CHECKED BY | DATE |
| K. TOYODA | '05/10/24 |
| APPROVED BY | DATE |
| N. UKITA | '05/10/24 |
| MATERIAL NO. | |
| SEE CHART | |

| SCALE | DESIGN UNITS | THIRD ANGLE PROJECTION | MODEL NO. |
|--------------------|--------------|------------------------|-------------------------|
| 10:1 | METRIC | ☑ | MINI MI2 REC. ASSY (SN) |
| MOLEX INCORPORATED | | | |
| DOCUMENT NO. | SD-51336-001 | | SHEET NO. |
| | | | 1 OF 1 |