

Excellent Integrated System Limited

Stocking Distributor

Click to view price, real time Inventory, Delivery & Lifecycle Information:

[Molex Connector Corporation](#)
[0622018668](#)

For any questions, you can email us directly:

sales@integrated-circuit.com

This document was generated on 04/06/2016

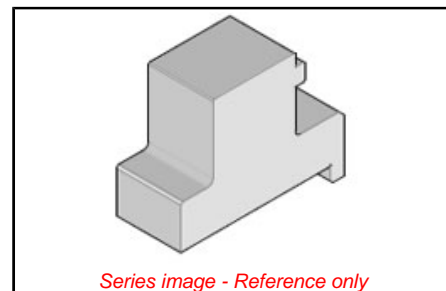
PLEASE CHECK WWW.MOLEX.COM FOR LATEST PART INFORMATION

Part Number: [0622018668](#)
Status: **Active**
Description: Press-In Tool for Power Module Assembly

Documents:
[RoHS Certificate of Compliance \(PDF\)](#)

General	
Product Family	Application Tooling
Series	T9999
Function	Insertion
Geographic Area	Global
Level of Automation	Manual
More Detailed Tech Information	applicationtooling@molex.com
Product Name	Impact™
Survey	www.molex.com/review/apptool_survey.html
Tool Type	Handtool
UPC	884982116269
Warranty Disclaimer	CAUTION: Molex tooling crimp specifications are valid only when used with Molex terminals and tooling manufactured by Molex and sold by Molex or authorized distributors ("Molex Tooling"). When using tooling other than Molex Tooling with Molex specific connector systems listed in our ATS documents, the Molex tooling qualification does not apply and the responsibility for full qualification of the connector system is that of the customer. Molex accepts no liability for connector performance or tooling support where tooling other than Molex Tooling is used or where Molex Tooling is modified.

Material Info	
Reference - Drawing Numbers	
Application Tooling Documents	ATS-622018668, TM-622018799



EU ELV Not Relevant	
EU RoHS Compliant	China RoHS
REACH SVHC Not Contained Per - ED/108/2014 (17 Dec 2014)	
Halogen-Free Status Not Relevant	
Need more information on product environmental compliance?	
Email productcompliance@molex.com Please visit the Contact Us section for any non-product compliance questions.	
China ROHS ELV	Not Relevant Not Relevant

Search Parts in this Series
[T9999 Series](#)

Use With
 78215 Impact™ Power Module Assembly, Right Angle, 5-Pair Assemblies

This document was generated on 04/06/2016

PLEASE CHECK WWW.MOLEX.COM FOR LATEST PART INFORMATION