

Excellent Integrated System Limited

Stocking Distributor

Click to view price, real time Inventory, Delivery & Lifecycle Information:

[Molex Connector Corporation](#)

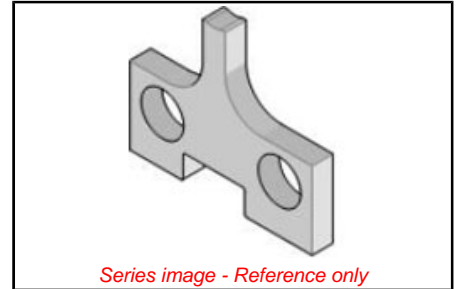
[0634451834](#)

For any questions, you can email us directly:

sales@integrated-circuit.com

PLEASE CHECK WWW.MOLEX.COM FOR LATEST PART INFORMATION

Part Number: [0634451834](#)
Status: **Active**
Description: Insulation Anvil



Documents:
[RoHS Certificate of Compliance \(PDF\)](#)

General	
Product Family	Application Tooling
Series	T9999
Comments	See Tooling Specification (PDF) Above
Function	Cutter
Geographic Area	Global
Level of Automation	Semi-Automatic
More Detailed Tech Information	applicationtooling@molex.com
Product Name	N/A
Survey	www.molex.com/review/apptool_survey.html
Tool Type	Anvil
UPC	800756451763
Warranty Disclaimer	CAUTION: Molex tooling crimp specifications are valid only when used with Molex terminals and tooling manufactured by Molex and sold by Molex or authorized distributors ("Molex Tooling"). When using tooling other than Molex Tooling with Molex specific connector systems listed in our ATS documents, the Molex tooling qualification does not apply and the responsibility for full qualification of the connector system is that of the customer. Molex accepts no liability for connector performance or tooling support where tooling other than Molex Tooling is used or where Molex Tooling is modified.

Material Info

Reference - Drawing Numbers
Application Tooling Documents ATS-STANDARD-PARTS

EU ELV Not Relevant	
EU RoHS Not Relevant	China RoHS Not Relevant
REACH SVHC Not Relevant	
Halogen-Free Status Not Relevant	
Need more information on product environmental compliance? Email productcompliance@molex.com Please visit the Contact Us section for any non-product compliance questions.	
China ROHS ELV	Not Relevant Not Relevant

Search Parts in this Series T9999 Series
Use With 63853-4000 , 63853-4070 , 63853-4100 , 63853-4170 , 638 55-2000, 63855-2070 , 63863-4000 , 63863-4070 , 63863-4100 , 63863-4170 , 63865-2000 , 63865-2070

PLEASE CHECK WWW.MOLEX.COM FOR LATEST PART INFORMATION