

Excellent Integrated System Limited

Stocking Distributor

Click to view price, real time Inventory, Delivery & Lifecycle Information:

[Molex Connector Corporation](#)
[0634560045](#)

For any questions, you can email us directly:

sales@integrated-circuit.com

This document was generated on 04/06/2016

PLEASE CHECK WWW.MOLEX.COM FOR LATEST PART INFORMATION

Part Number: [0634560045](#)
Status: **Active**
Description: Insulation Anvil

Documents:

[RoHS Certificate of Compliance \(PDF\)](#)

General

Product Family

Series

Comments

Function

Geographic Area

Level of Automation

More Detailed Tech Information

Product Name

Survey

Tool Type

UPC

Warranty Disclaimer

Application Tooling

T9999

See Tooling Specification (PDF) Above

Cutter

Global

Semi-Automatic

applicationtooling@molex.com

N/A

www.molex.com/review/apptool_survey.html

Anvil

800756836645

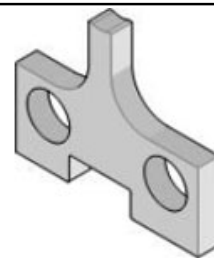
CAUTION: Molex tooling crimp specifications are valid only when used with Molex terminals and tooling manufactured by Molex and sold by Molex or authorized distributors ("Molex Tooling"). When using tooling other than Molex Tooling with Molex specific connector systems listed in our ATS documents, the Molex tooling qualification does not apply and the responsibility for full qualification of the connector system is that of the customer. Molex accepts no liability for connector performance or tooling support where tooling other than Molex Tooling is used or where Molex Tooling is modified.

Material Info

Reference - Drawing Numbers

Application Tooling Documents

ATS-STANDARD-PARTS



Series image - Reference only

EU ELV

Not Relevant

EU RoHS

Not Relevant

REACH SVHC

Not Relevant

Halogen-Free

Status

Not Relevant

Need more information on product environmental compliance?

Email productcompliance@molex.com
Please visit the [Contact Us](#) section for any non-product compliance questions.

China ROHS

ELV

China RoHS

Not Relevant

Not Relevant

Search Parts in this Series

T9999 Series

Use With

63900-0600 , 63900-0670

This document was generated on 04/06/2016

PLEASE CHECK WWW.MOLEX.COM FOR LATEST PART INFORMATION