

## Excellent Integrated System Limited

Stocking Distributor

Click to view price, real time Inventory, Delivery & Lifecycle Information:

[Molex Connector Corporation](#)  
[0634620003](#)

For any questions, you can email us directly:

[sales@integrated-circuit.com](mailto:sales@integrated-circuit.com)

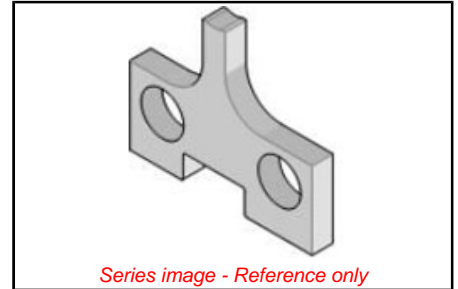
This document was generated on 04/06/2016

**PLEASE CHECK WWW.MOLEX.COM FOR LATEST PART INFORMATION**

**Part Number:** [0634620003](#)  
**Status:** **Active**  
**Description:** Insulation Anvil

**Documents:**  
[RoHS Certificate of Compliance \(PDF\)](#)

General	
Product Family	Application Tooling
Series	T9999
Comments	See Tooling Specification (PDF) Above
Function	Cutter
Geographic Area	Global
Level of Automation	Semi-Automatic
More Detailed Tech Information	<a href="mailto:applicationtooling@molex.com">applicationtooling@molex.com</a>
Product Name	N/A
Survey	<a href="http://www.molex.com/review/apptool_survey.html">www.molex.com/review/apptool_survey.html</a>
Tool Type	Anvil
UPC	822348743254
Warranty Disclaimer	CAUTION: Molex tooling crimp specifications are valid only when used with Molex terminals and tooling manufactured by Molex and sold by Molex or authorized distributors ("Molex Tooling"). When using tooling other than Molex Tooling with Molex specific connector systems listed in our ATS documents, the Molex tooling qualification does not apply and the responsibility for full qualification of the connector system is that of the customer. Molex accepts no liability for connector performance or tooling support where tooling other than Molex Tooling is used or where Molex Tooling is modified.
Physical	
Net Weight	10.340/g
Material Info	
Reference - Drawing Numbers	
Application Tooling Documents	ATS-STANDARD-PARTS



<b>EU ELV</b>	<b>Not Relevant</b>
<b>EU RoHS</b>	<b>China RoHS</b>
<b>REACH SVHC</b>	<b>Not Relevant</b>
<b>Halogen-Free Status</b>	<b>Not Relevant</b>
<b>Need more information on product environmental compliance?</b>	
Email <a href="mailto:productcompliance@molex.com">productcompliance@molex.com</a> Please visit the <a href="#">Contact Us</a> section for any non-product compliance questions.	
China ROHS	Not Relevant
ELV	Not Relevant

<b>Search Parts in this Series</b>
T9999 Series
<b>Use With</b>
63881-2000 , 63881-2070 , 63885-2000 , 63885-2070

This document was generated on 04/06/2016

**PLEASE CHECK WWW.MOLEX.COM FOR LATEST PART INFORMATION**