

Excellent Integrated System Limited

Stocking Distributor

Click to view price, real time Inventory, Delivery & Lifecycle Information:

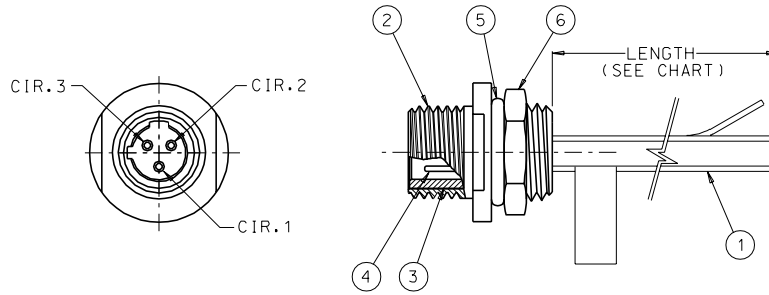
[Molex Connector Corporation](#)
[0849070037](#)

For any questions, you can email us directly:

sales@integrated-circuit.com

PART NO.	ENG. NO.	LENGTH
849070016	-	2'
849070037	-	3'
845810302	07364M07SG	1'

REV	DATE	ECN NO.	APPVD BY	REL BY
C	9-28-99	UM2000-0127 PROD. REL.	FVW	
D	7-3-00	UM2000-0582		



ITEM	QTY	DESCRIPTION	MATERIAL/FINISH
6	1	LOCKNUT, PANEL	STEEL/ZINC PLATED
5	1	O-RING	NITRILE
4	3	CONTACT, PIN	CU ALLOY/GOLD PLATED
3	1	INSERT, PIN, 3/C	NYLON/COLOR:GRAY
2	1	RECEPT. BODY	STAINLESS STEEL
1	SEE CHART	WIRE, 22 AWG.	PVC INSULATED

P1

1	GRN
2	RED/BLK
3	RED/WHT

WIRING DIAGRAM

QUALITY SYMBOLS MAJOR = CRITICAL = SPC =	UNLESS SPECIFIED: ALL DIMENSIONS IN INCHES GENERAL TOLERANCES: 3 PLACE ±.005 2 PLACE ±.01 ANGULAR ±2°	SCALE --- DWG SIZE B DRAWN BY & DATE GF 9-28-99 CHECKED BY & DATE DW 9-28-99 APPROVED BY & DATE DW 9-28-99	THIRD ANGLE PROJECTION REVISE ON CAD ONLY
	Uti-Mate CAGE CODE 58967	TITLE: MICRO-C, RECEPTACLE US DUAL KEY, MALE, 3 POLE, 22 AWG. MOLEX INCORPORATED Orange, CA 92868	PART NO. SEE CHART DRAWING NO. SD-84907-0016

THIS DRAWING CONTAINS INFORMATION THAT IS PROPRIETARY TO MOLEX INCORPORATED AND SHOULD NOT BE USED WITHOUT WRITTEN PERMISSION.