



**Distributor of Molex Connector Corporation: Excellent Integrated System Limited**  
Datasheet of 0873814487 - Connector Receptacle 44 Position 0.079" (2.00mm) Surface Mount

Contact us: [sales@integrated-circuit.com](mailto:sales@integrated-circuit.com) Website: [www.integrated-circuit.com](http://www.integrated-circuit.com)

---

## **Excellent Integrated System Limited**

Stocking Distributor

Click to view price, real time Inventory, Delivery & Lifecycle Information:

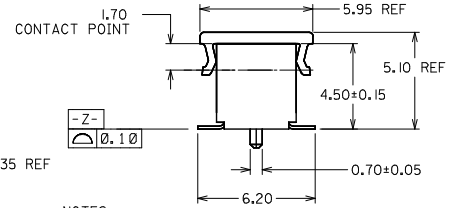
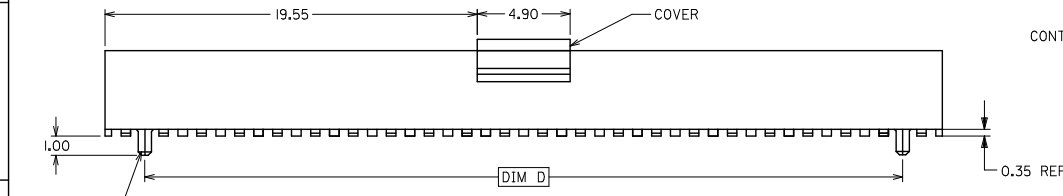
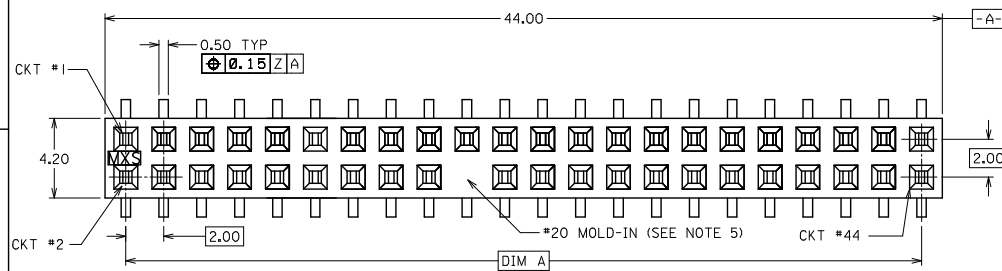
[Molex Connector Corporation](#)  
[0873814487](#)

For any questions, you can email us directly:

[sales@integrated-circuit.com](mailto:sales@integrated-circuit.com)

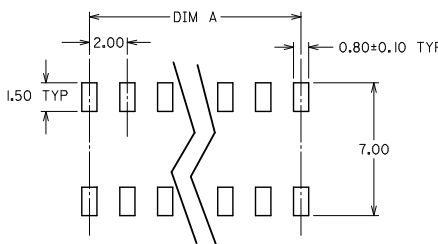
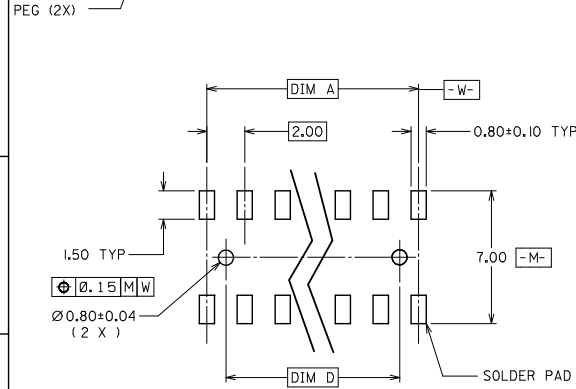
PART NUMBER	CKT. SIZE	DIM A	DIM D	COVER	PACKAGING	PEG
87381-4488	44	42.00	40.00	NO	TUBE	YES
87381-4489	44	42.00	40.00	YES	TAPE/REEL	YES
87381-4487	44	42.00	40.00	YES	TUBE	YES
87381-4486	44	42.00	40.00	YES	TAPE/REEL	NO
87381-4485	44	42.00	40.00	YES	TUBE	NO

COVER IS NOT SHOWN IN THIS VIEW



**NOTES:**

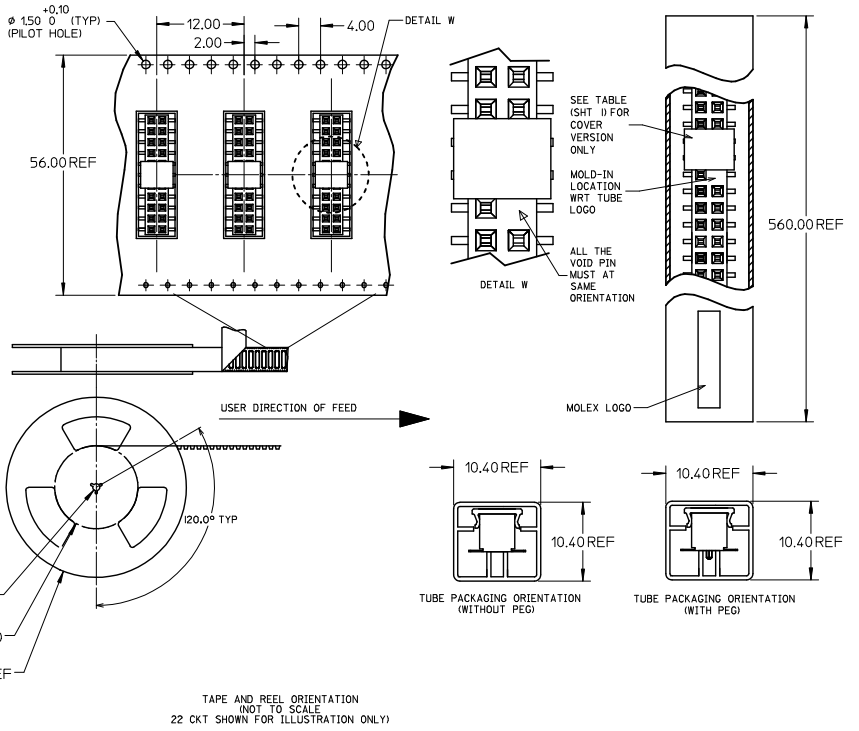
1. PLATING FINISH :  
0.38um MIN. GOLD IN CONTACT AREA  
1.27um MIN. TIN IN SOLDER TAIL AREA  
BOTH OVER 1.27um MIN OVERALL
2. PRODUCT SPECIFICATION PS-87380 APPLIES
3. COPLANARITY OF SOLDER TAILS ARE TO BE MEASURED BY RESTING THE PART ON A FLAT GAUGE SURFACE
4. PACKAGING SEE SHEET 2 OF 2
5. TERMINAL FULLY LOADED
6. PART WITH COVER & PEG SHOWN FOR ILLUSTRATION.
7. PARTS SHALL BE PACKED IN MOISTURE BARRIER BAG.



**RECOMMENDED PCB LAYOUT (WITHOUT PEG)**

**RECOMMENDED PCB LAYOUT (WITH PEG)**

<b>ADD NOTE 7.</b> EC No. S2015-0813 DRAWN/ISSUE: 2015/01/16 CHKD:G00H 2015/01/22 APPR:KHLIM 2015/01/22	QUALITY SYMBOLS ▽=0 ▽=0	GENERAL TOLERANCES (UNLESS SPECIFIED)		DIMENSION STYLE <b>MM ONLY</b>		SCALE NTS	DESIGN UNITS METRIC	THIRD ANGLE PROJECTION
		4 PLACES	± ---	± ---	DRAWN BY	DATE	TITLE	
		3 PLACES	± ---	± ---	RSHAN	1999/01/11	MGRID 2MM RECEPTACLE 44 CKTS, 4.50MM HT. <b>MOLEX INCORPORATED</b>	
		2 PLACES	± 0.20	± ---	CHECKED BY	DATE		
1 PLACE	± ---	± ---	JSGOH	1999/11/16				
ANGULAR ± 3°		APPROVED BY		DATE	MATERIAL NO. <b>SEE TABLE</b>	DOCUMENT NO. <b>SD-87381-4498</b>		SHEET NO. 1 OF 2
DRAFT WHERE APPLICABLE MUST REMAIN WITHIN DIMENSIONS				THIS DRAWING CONTAINS INFORMATION THAT IS PROPRIETARY TO MOLEX INCORPORATED AND SHOULD NOT BE USED WITHOUT WRITTEN PERMISSION				



- NOTES:
- LEADER AND TRAILER TAPE
  - PEELING OFF FORCE OF THE TOP TAPE: 20-80gf.  
 (PEELING DIRECTION AS SHOWN IN FOLLOWING FIGURE)
  - PACKAGING STANDARD IS AS PER EIA-481.
  - TAPE & REEL QUANTITY = 800 PCS/REEL

ADD NOTE 7. EC NO: S2015-0813 DRAWN BY: MDR/NAJSEE CHKD: GGOH APPR: KHLIM 2015/01/16 2015/01/22 2015/01/22	QUALITY SYMBOLS	GENERAL TOLERANCES (UNLESS SPECIFIED)	DIMENSION STYLE	SCALE	DESIGN UNITS	THIRD ANGLE PROJECTION																							
	$\nabla=0$ $\nabla=0$	<table border="1"> <thead> <tr> <th></th> <th>mm</th> <th>INCH</th> </tr> </thead> <tbody> <tr> <td>4 PLACES</td> <td>± ---</td> <td>± ---</td> </tr> <tr> <td>3 PLACES</td> <td>± ---</td> <td>± ---</td> </tr> <tr> <td>2 PLACES</td> <td>± 0.20</td> <td>± ---</td> </tr> <tr> <td>1 PLACE</td> <td>± ---</td> <td>± ---</td> </tr> <tr> <td colspan="3">ANGULAR ± 3°</td> </tr> </tbody> </table>		mm	INCH	4 PLACES	± ---	± ---	3 PLACES	± ---	± ---	2 PLACES	± 0.20	± ---	1 PLACE	± ---	± ---	ANGULAR ± 3°			MM ONLY	NTS	METRIC						
		mm	INCH																										
	4 PLACES	± ---	± ---																										
3 PLACES	± ---	± ---																											
2 PLACES	± 0.20	± ---																											
1 PLACE	± ---	± ---																											
ANGULAR ± 3°																													
DRAFT WHERE APPLICABLE MUST REMAIN WITHIN DIMENSIONS	<table border="1"> <thead> <tr> <th>DRAWN BY</th> <th>DATE</th> <th>TITLE</th> </tr> </thead> <tbody> <tr> <td>RSHAN</td> <td>1999/01/11</td> <td></td> </tr> <tr> <td>CHECKED BY</td> <td>DATE</td> <td></td> </tr> <tr> <td>JSGOH</td> <td>1999/11/16</td> <td></td> </tr> <tr> <td>APPROVED BY</td> <td>DATE</td> <td></td> </tr> <tr> <td>KHLIM</td> <td>2015/01/22</td> <td></td> </tr> </tbody> </table>	DRAWN BY	DATE	TITLE	RSHAN	1999/01/11		CHECKED BY	DATE		JSGOH	1999/11/16		APPROVED BY	DATE		KHLIM	2015/01/22		<table border="1"> <tr> <td>MATERIAL NO.</td> <td>DOCUMENT NO.</td> <td>SHEET NO.</td> </tr> <tr> <td>SEE TABLE</td> <td>SD-87381-4498</td> <td>2 OF 2</td> </tr> </table>	MATERIAL NO.	DOCUMENT NO.	SHEET NO.	SEE TABLE	SD-87381-4498	2 OF 2	MGRID 2MM RECEPTACLE 44 CKTS, 4.50MM HT. <b>MOLEX INCORPORATED</b>		
DRAWN BY	DATE	TITLE																											
RSHAN	1999/01/11																												
CHECKED BY	DATE																												
JSGOH	1999/11/16																												
APPROVED BY	DATE																												
KHLIM	2015/01/22																												
MATERIAL NO.	DOCUMENT NO.	SHEET NO.																											
SEE TABLE	SD-87381-4498	2 OF 2																											
THIS DRAWING CONTAINS INFORMATION THAT IS PROPRIETARY TO MOLEX INCORPORATED AND SHOULD NOT BE USED WITHOUT WRITTEN PERMISSION																													