

## Excellent Integrated System Limited

Stocking Distributor

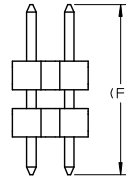
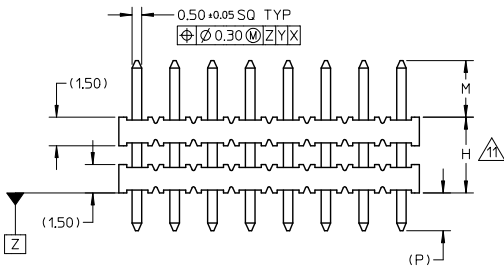
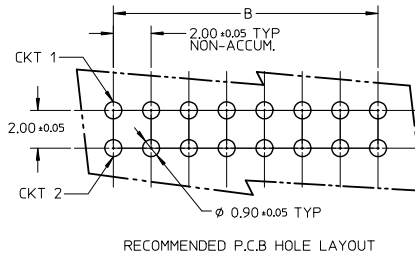
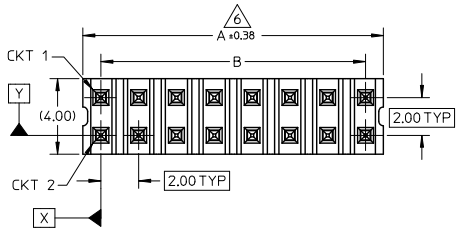
Click to view price, real time Inventory, Delivery & Lifecycle Information:

[Molex Connector Corporation](#)  
[0877615000](#)

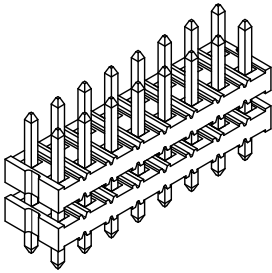
For any questions, you can email us directly:

[sales@integrated-circuit.com](mailto:sales@integrated-circuit.com)

10 9 8 7 6 5 4 3 2 1



REVISION OF DRAWINGS MAYBE CHANGED DURING FINAL RELEASED FOR PRODUCTION



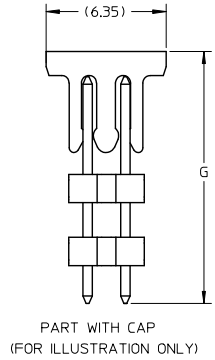
NOTES:

1. MATERIAL:  
HSG: NYLON, GLASS-FILLED, UL94V-0 COLOR: BLACK  
PIN: 0.50MM SQ, COPPER ALLOY
2. PLATING FINISH:
  - (1) 0.384μm MIN. GOLD OVER  
1.254μm MIN. NICKEL OVERALL.
  - (2) GOLD FLASH ON CONTACT AND  
2.504μm MIN. TIN ON SOLDERTAIL OVER  
1.254μm MIN. NICKEL OVERALL.
  - (3) 0.384μm MIN. GOLD PLATE ON CONTACT AND  
2.004μm MIN. TIN ON SOLDERTAIL OVER  
1.254μm MIN. NICKEL OVERALL.
  - (4) 0.754μm MIN. GOLD PLATE ON CONTACT AND  
2.004μm MIN. TIN ON SOLDERTAIL OVER  
1.254μm MIN. NICKEL OVERALL.
  - (5) 2.504μm MIN. TIN OVERALL  
1.254μm MIN. NICKEL OVERALL
  - (6) 0.384μm MIN. GOLD PLATE ON CONTACT AND  
0.054μm MIN. GOLD ON SOLDERTAIL OVER  
1.254μm MIN. NICKEL OVERALL.
  - (7) 0.754μm MIN. GOLD PLATE ON CONTACT AND  
0.054μm MIN. GOLD ON SOLDERTAIL OVER  
1.254μm MIN. NICKEL OVERALL.
  - (8) 0.754μm MIN. GOLD OVERALL  
1.254μm MIN. NICKEL OVERALL.
  - (9) 0.054μm MIN. GOLD OVERALL  
1.254μm MIN. NICKEL OVERALL.
3. PIN PUSHOUT FORCE: 0.85Kgf MIN IN EITHER DIRECTION.
4. THE ABOVE 16CKTS SHOWN IS FOR ILLUSTRATION ONLY.
5. FOR PACKING OPTION PLEASE REFER TO THE TABLE.
6. IRREGULAR CIRCUIT CUTOFF WITHIN BREAKAWAY SECTION IS PERMISSIBLE. CUTTING OR CHIPPING OF THE MAIN BODY IS NOT ACCEPTABLE
7. PRODUCT SPEC PS-87761-001 APPLIES.
8. RECOMMENDED PCB THICKNESS 1.60MM.
9. WAFER TO BE FLAT WITHIN 0.003 mm/mm
10. PACKAGING SPECIFICATION:  
TRAY: PK-89990-487  
BULK: PK-89990-490  
TUBE: PK-89990-475
11. WHEN WAFER ARE STACK TOGETHER, DIMENSION 'H' SHOULD BE TAKEN AS REFERENCE.

ADD P/N: 87761-4001 EC NO: S2012-0955 DRAWN: KANG CHKD: AT SEE APPR: M LONG 2012/06/26 2012/07/16 2012/07/17	QUALITY SYMBOLS ∇=0 ∇=0 ∇=0	GENERAL TOLERANCES (UNLESS SPECIFIED)		DIMENSION STYLE		SCALE	DESIGN UNITS	THIRD ANGLE PROJECTION
		mm	INCH	MM ONLY				
		4 PLACES ± ---	± ---	DRAWN BY	DATE	TITLE ZMM DUAL ROW DUAL WAFER HEADER, VERTICAL T/H		
		3 PLACES ± ---	± ---	KCHO	2005/02/23			
2 PLACES ± 0.20	± ---	CHECKED BY	DATE					
1 PLACE ± ---	± ---	PTLIM	2005/04/26	MOLEX INCORPORATED MOLEX INCORPORATED				
ANGULAR ± 3°		APPROVED BY	DATE					
DRAFT WHERE APPLICABLE MUST REMAIN WITHIN DIMENSIONS		M LONG	2010/11/11	MATERIAL NO. SEE TABLE	DOCUMENT NO. SD-87761-052	SHEET NO. 1 OF 3		
		SIZE	THIS DRAWING CONTAINS INFORMATION THAT IS PROPRIETARY TO MOLEX INCORPORATED AND SHOULD NOT BE USED WITHOUT WRITTEN PERMISSION					

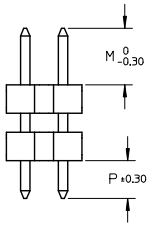
9 8 7 6 5 4 3 2 1

CKT SIZE	DIMENSION	
	A	B
04	4.00	2.00
06	6.00	4.00
08	8.00	6.00
10	10.00	8.00
12	12.00	10.00
14	14.00	12.00
16	16.00	14.00
18	18.00	16.00
20	20.00	18.00
22	22.00	20.00
24	24.00	22.00
26	26.00	24.00
28	28.00	26.00
30	30.00	28.00
32	32.00	30.00
34	34.00	32.00
36	36.00	34.00
38	38.00	36.00
40	40.00	38.00
42	42.00	40.00
44	44.00	42.00
46	46.00	44.00
48	48.00	46.00
50	50.00	48.00



PART NUMBERS	CKT SIZE	VOID POSITION	KINK POSITION	CAP OPTION	DIMENSION				(G)	PLATING OPTION	PACKAGING TYPE
					MATING END (M)	STACKER HEIGHT (H)	SOLDER TAIL (P)	(F)			
87761-0401	4	----	----	----	4.00	15.50	3.50	23.00	-	3	TRAY
87761-0600	6	----	----	----	7.00	5.00	2.80	14.80	-	5	
87761-0801	8	3,4,5,6	----	----	4.00	15.50	3.50	23.00	-	3	
87761-0800	8	----	----	----	8.70	16.00	3.50	28.20	-	4	BULK
87761-0802	8	----	----	----	3.50	21.34	3.50	28.34	-	8	
87761-1006	10	1	----	----	1.16	3.05	3.99	8.20	-	5	TRAY
87761-1009	10	----	----	----	1.16	3.05	3.99	8.20	-	5	
87761-1007	10	----	----	----	2.60	34.00	2.60	39.20	-	5	
87761-1000	10	----	----	----	5.50	27.50	3.43	36.43	-	4	
87761-1001	10	----	----	----	2.50	14.50	4.00	21.00	-	4	
87761-0012	12	----	----	----	2.60	10.00	3.70	16.30	-	5	
87761-1200	12	----	----	----	4.00	24.00	2.79	30.79	-	4	
87761-1400	14	----	----	----	1.90	3.00	4.50	9.40	-	5	
87761-0016	16	----	----	----	4.00	9.15	3.85	17.00	-	3	
87761-1601	16	----	----	YES	4.50	4.00	4.50	13.00	14.27	5	
87761-0017	16	----	----	----	3.00	3.00	2.70	8.70	-	5	
87761-1600	16	----	----	----	7.00	5.00	2.80	14.80	-	5	TRAY
87761-0020	20	----	----	----	6.00	4.00	2.90	12.90	-	5	
87761-0031	20	----	----	----	3.00	4.00	2.03	9.00	-	6	
87761-2000	20	----	----	----	4.00	24.00	2.79	30.79	-	4	
87761-2001	20	----	----	----	2.50	14.50	4.00	21.00	-	4	
87761-2018	20	----	----	----	4.50	10.16	4.45	19.10	-	3	
87761-2400	24	----	----	----	5.50	27.50	2.80	35.80	-	4	
87761-2401	24	----	----	----	2.00	60.00	2.00	64.00	-	7	
87761-2402	24	----	----	----	2.00	42.00	2.00	46.00	-	7	
87761-2610	26	----	----	----	5.30	6.30	2.70	14.30	-	4	
87761-3000	30	----	----	----	4.00	17.30	4.00	25.30	-	1	
87761-0024	40	----	----	----	8.89	15.88	3.43	28.20	-	4	
87761-4000	40	----	----	----	2.60	3.00	2.60	8.20	-	5	
87761-4001	40	----	----	----	4.65	19.30	4.65	28.60	-	9	
87761-4218	42	----	----	----	4.50	10.16	4.45	19.10	-	3	

NOTES:  
 APPLY ONLY FOR PART#87761-5021 & 87761-5022

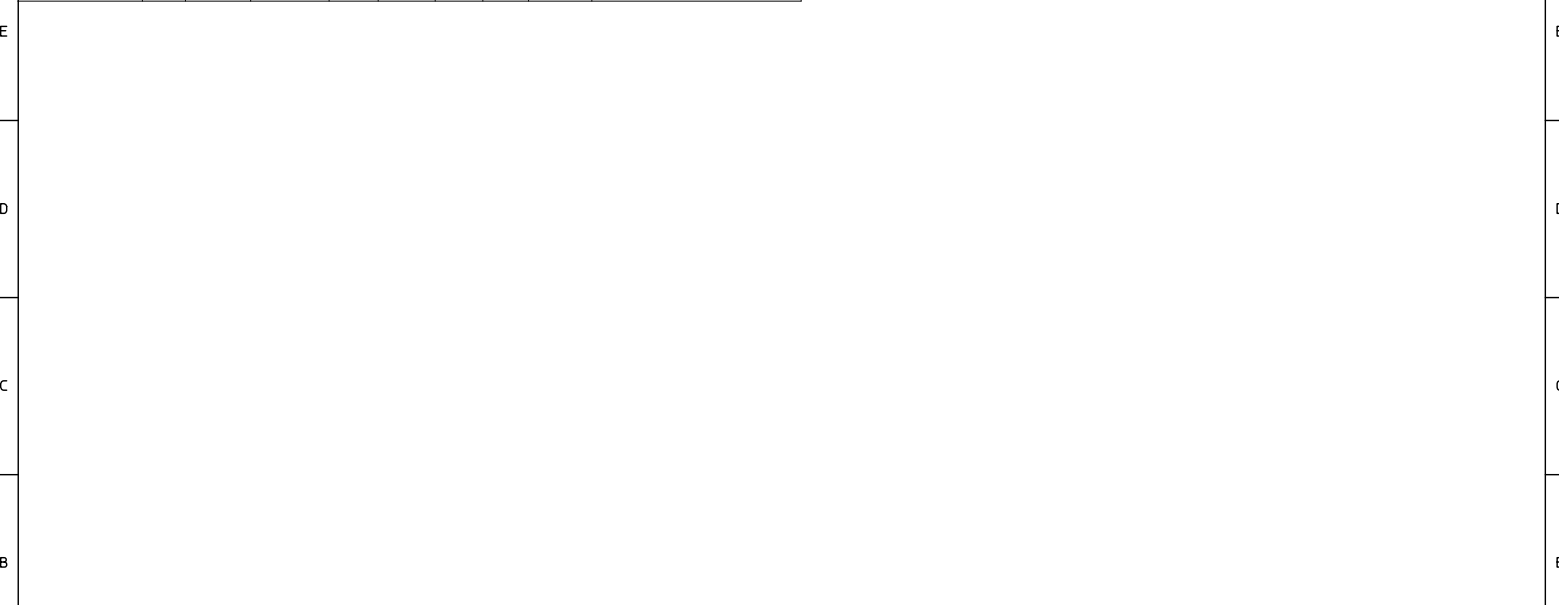


ADD P/IN:87761-4001 EC No: S2012-0955 DRWN:SKMG 2012/06/26 CHK:CHAISEE 2012/07/16 APPR:MLONG 2012/07/17 REV C14	QUALITY SYMBOLS = 0 = 0 = 0	GENERAL TOLERANCES (UNLESS SPECIFIED) 4 PLACES ± --- ± --- 3 PLACES ± --- ± --- 2 PLACES ± 0.20 ± --- 1 PLACE ± --- ± --- ANGULAR ± 3°	DIMENSION STYLE MM ONLY DRAWN BY: KCHO DATE: 2005/02/23 CHECKED BY: PTLIM DATE: 2005/04/26 APPROVED BY: MLONG DATE: 2010/11/11	SCALE: NTS DESIGN UNITS: METRIC THIRD ANGLE PROJECTION	TITLE: 2MM DUAL ROW DUAL WAFER HEADER, VERTICAL T/H MOLEX INCORPORATED DOCUMENT NO: SD-87761-052 SHEET NO: 2 OF 3	
	DRAFT WHERE APPLICABLE MUST REMAIN WITHIN DIMENSIONS		MATERIAL NO. SEE TABLE	THIS DRAWING CONTAINS INFORMATION THAT IS PROPRIETARY TO MOLEX INCORPORATED AND SHOULD NOT BE USED WITHOUT WRITTEN PERMISSION		



10 9 8 7 6 5 4 3 2 1

PART NUMBERS	CKT SIZE	VOID POSITION	KINK POSITION	DIMENSION			(F)	PLATING OPTION	PACKAGING TYPE
				MATING END M	STACKER HEIGHT H	SOLDER TAIL (P)			
87761-4400	44	----	----	7.00	5.00	4.00	16.00	5	TRAY
87761-0026	50	----	----	8.89	15.88	3.43	28.20	4	
87761-5000	50	----	----	3.50	10.00	3.50	17.00	5	
87761-5001	50	----	----	2.50	10.30	4.00	16.80	4	
87761-5002	50	----	----	2.50	11.70	2.60	16.80	4	
△ 87761-5021	50	----	----	4.00	8.70	2.50	15.20	3	
△ 87761-5022	50	----	----	4.00	5.71	2.50	12.21	3	



ADD P/N: 87761-4001 EC NO: S2012-0955 DRAWN: KANG CHECKED: SEE APPR: MLONG	QUALITY SYMBOLS $\nabla=0$ $\nabla=0$ $\nabla=0$	GENERAL TOLERANCES (UNLESS SPECIFIED) mm INCH 4 PLACES ± --- ± --- 3 PLACES ± --- ± --- 2 PLACES ± 0.20 ± --- 1 PLACE ± --- ± --- ANGULAR ± 3 °	DIMENSION STYLE MM ONLY DRAWN BY: KCHO DATE: 2005/02/23 CHECKED BY: PTL IM DATE: 2005/04/26 APPROVED BY: MLONG DATE: 2010/11/11	SCALE: NTS DESIGN UNITS: METRIC THIRD ANGLE PROJECTION	TITLE: 2MM DUAL ROW DUAL WAFER HEADER, VERTICAL T/H MOLEX INCORPORATED	MATERIAL NO.: SEE TABLE DOCUMENT NO.: SD-87761-052 SHEET NO.: 3 OF 3	
	DESCRIPTION: C14	DRAFT WHERE APPLICABLE MUST REMAIN WITHIN DIMENSIONS	THIS DRAWING CONTAINS INFORMATION THAT IS PROPRIETARY TO MOLEX INCORPORATED AND SHOULD NOT BE USED WITHOUT WRITTEN PERMISSION				

10 9 8 7 6 5 4 3 2 1