

## **Excellent Integrated System Limited**

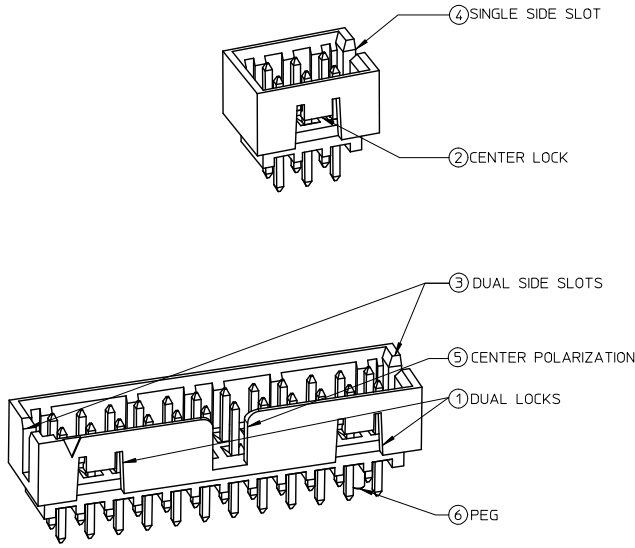
Stocking Distributor

Click to view price, real time Inventory, Delivery & Lifecycle Information:

[Molex Connector Corporation](#)  
[0878315021](#)

For any questions, you can email us directly:  
[sales@integrated-circuit.com](mailto:sales@integrated-circuit.com)

**FEATURES SELECTION GUIDE**



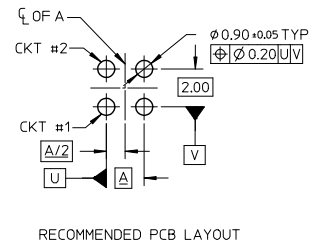
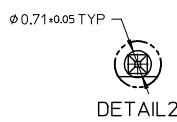
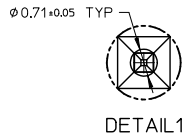
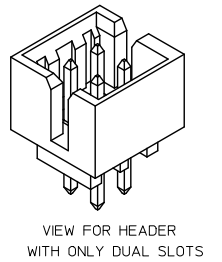
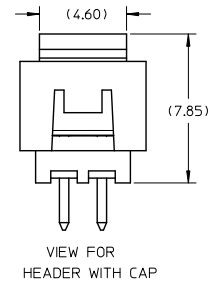
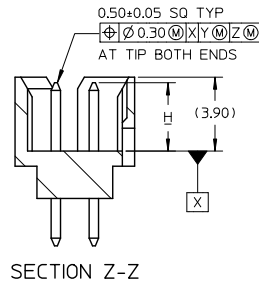
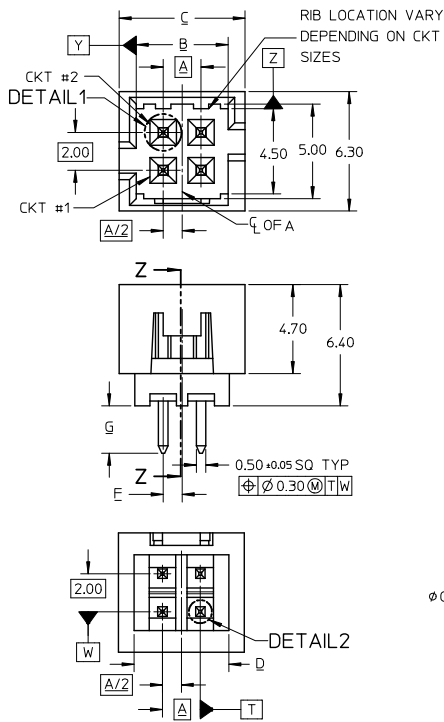
CIRCUIT SIZE	FEATURES						SHEET NO
	FRICTION LOCKS		SIDE SLOTS		⑤ CENTER POLARIZATION	⑥ PEG	
	① DUAL	② CENTER	③ DUAL	④ SINGLE			
4	N.A	N.A	YES	N.A	N.A	N.A	2 - 3
	N.A	YES	YES	N.A	N.A	N.A	
	N.A	YES	N.A	YES	N.A	N.A	
6	N.A	N.A	YES	N.A	N.A	N.A	4 - 5
	N.A	N.A	YES	N.A	N.A	YES	
	N.A	YES	YES	N.A	N.A	N.A	
	N.A	YES	YES	N.A	N.A	YES	
	N.A	YES	N.A	YES	N.A	N.A	
	N.A	YES	N.A	YES	N.A	YES	
8 TO 12	N.A	N.A	YES	N.A	YES	N.A	6 - 8
	N.A	N.A	YES	N.A	YES	YES	
	N.A	YES	YES	N.A	N.A	N.A	
	N.A	YES	YES	N.A	N.A	YES	
	N.A	YES	N.A	YES	N.A	N.A	
	N.A	YES	N.A	YES	N.A	YES	
14 TO 50	YES	N.A	YES	N.A	YES	N.A	9 - 13
	YES	N.A	YES	N.A	YES	YES	

**PACKAGING SPECIFICATION TABLE**

TAPE AND REEL PACKAGING	PK-87831-300
TUBE STANDARD PACKAGING	PK-87831-001
TUBE NON-STANDARD PACKAGING FOR:	PK-87831-002
87831-0419    87831-0645	
87831-5141    87831-0632	
87831-0443    87831-5119	
87831-5241    87831-1011	
87831-5242    87831-1420	
87831-0643	

<b>ADD PK TABLE</b> EC NO: S2017-0022 DRAWN BY: 2016/07/04 CHECKED BY: 2016/07/27 APPR: KHLIM 2016/07/28 REV: A5	QUALITY SYMBOLS $\nabla=0$ $\nabla=0$ $\nabla=0$	GENERAL TOLERANCES (UNLESS SPECIFIED) <table border="1"> <tr> <th></th> <th>mm</th> <th>INCH</th> </tr> <tr> <td>4 PLACES</td> <td>±---</td> <td>±---</td> </tr> <tr> <td>3 PLACES</td> <td>±---</td> <td>±---</td> </tr> <tr> <td>2 PLACES</td> <td>±0.20</td> <td>±---</td> </tr> <tr> <td>1 PLACE</td> <td>±---</td> <td>±---</td> </tr> <tr> <td>0 PLACE</td> <td>±---</td> <td>±---</td> </tr> </table>		mm	INCH	4 PLACES	±---	±---	3 PLACES	±---	±---	2 PLACES	±0.20	±---	1 PLACE	±---	±---	0 PLACE	±---	±---	DIMENSION STYLE <b>MM ONLY</b> DRAWN BY: G MENARLY    DATE: 2015/04/15 CHECKED BY: CGOH    DATE: 2015/06/29 APPROVED BY: KHLIM    DATE: 2015/06/29	SCALE: NTS DESIGN UNITS: METRIC THIRD ANGLE PROJECTION	TITLE: MILLIGRID 2MM PITCH, THROUGH HOLE VERTICAL SHROUDED HEADER <b>molex</b>	MATERIAL NO. SEE TABLE DOCUMENT NO. SD-87831-0001 SHEET NO. 1 OF 13
		mm	INCH																					
	4 PLACES	±---	±---																					
	3 PLACES	±---	±---																					
	2 PLACES	±0.20	±---																					
1 PLACE	±---	±---																						
0 PLACE	±---	±---																						
DRAFT WHERE APPLICABLE MUST REMAIN WITHIN DIMENSIONS		THIS DRAWING CONTAINS INFORMATION THAT IS PROPRIETARY TO MOLEX INCORPORATED AND SHOULD NOT BE USED WITHOUT WRITTEN PERMISSION																						

4 CIRCUITS



- NOTES:
- MATERIALS:  
HOUSING: 30% GF, NYLON, UL94V-0, COLOR: BLACK  
PIN: 0.50MM SQ PHOSPHOR BRONZE
  - FINISHES: REFER TO PLATING OPTIONS
  - PRODUCT SPECIFICATION: PS-87831-027
  - PACKAGING SPECIFICATION: SEE PACKAGING SPECS TABLE ON SHEET 1
  - MATES WITH: A. MOLEX CRIMP RECEPTACLE HOUSING: 51110 SERIES AND CRIMP TERMINAL: 50394 SERIES  
B. MOLEX 2MM MILLIGRID DUAL ROW IDT: 87568 SERIES  
C. MOLEX 2MM MILLIGRID DUAL ROW RECEPTACLE: 79107 (GOLD PLATED), 78787 (TIN PLATED)

EDIT NOTE 4 EC NO: S2017-0022 DRAWN: MENARLY 2016/07/04 CHKD: SCHEDONG 2016/07/27 APPR: KHLIM 2016/07/28 REV A5	QUALITY SYMBOLS	GENERAL TOLERANCES (UNLESS SPECIFIED)	DIMENSION STYLE	SCALE	DESIGN UNITS	THIRD ANGLE PROJECTION																		
	$\nabla=0$ $\nabla=0$ $\nabla=0$	<table border="1"> <thead> <tr> <th></th> <th>mm</th> <th>INCH</th> </tr> </thead> <tbody> <tr> <td>4 PLACES</td> <td>±---</td> <td>±---</td> </tr> <tr> <td>3 PLACES</td> <td>±---</td> <td>±---</td> </tr> <tr> <td>2 PLACES</td> <td>±0.20</td> <td>±---</td> </tr> <tr> <td>1 PLACE</td> <td>±---</td> <td>±---</td> </tr> <tr> <td>0 PLACE</td> <td>±---</td> <td>±---</td> </tr> </tbody> </table>		mm	INCH	4 PLACES	±---	±---	3 PLACES	±---	±---	2 PLACES	±0.20	±---	1 PLACE	±---	±---	0 PLACE	±---	±---	MM ONLY	NTS	METRIC	
		mm	INCH																					
	4 PLACES	±---	±---																					
3 PLACES	±---	±---																						
2 PLACES	±0.20	±---																						
1 PLACE	±---	±---																						
0 PLACE	±---	±---																						
	ANGULAR ± 3°	DRAWN BY	DATE	TITLE																				
	DRAFT WHERE APPLICABLE MUST REMAIN WITHIN DIMENSIONS	GMENARLY	2015/04/15	MILLIGRID 2MM PITCH, THROUGH HOLE VERTICAL SHROUDED HEADER																				
		CHECKED BY	DATE	<b>molex</b>	DOCUMENT NO.	SHEET NO.																		
		CGOH	2015/06/29	SD-87831-0001		2 OF 13																		
		APPROVED BY	DATE	THIS DRAWING CONTAINS INFORMATION THAT IS PROPRIETARY TO MOLEX INCORPORATED AND SHOULD NOT BE USED WITHOUT WRITTEN PERMISSION																				
		KHLIM	2015/06/29																					



10 9 8 7 6 5 4 3 2 1

4 CIRCUITS

CKT SIZE	ASSY P/N WITHOUT CAP IN TUBE	ASSY P/N WITH CAP IN TUBE	ASSY P/N WITH CAP IN T&R	PLATING OPTIONS	FRICTION LOCKS		SIDE SLOTS		CENTER POLARIZATION	PEG	DIMENSION							
					DUAL	CENTER	DUAL	SINGLE			A	B	C	D	E	F	G	H
E 4	87831-0419	N.A	N.A	1	N.A	N.A	YES	N.A	N.A	N.A	2.00	4.85	6.65	5.00	N.A	N.A	2.50	3.60 <sup>+0.15</sup> <sub>-0.30</sub>
	87831-0420	N.A	N.A	2														
	87831-0421	N.A	N.A	3														
	87831-0436	N.A	N.A	4	N.A	YES	YES	N.A	N.A	N.A						1.00	2.50	
	87831-0441	87831-0456	N.A	2														
	87831-0442	N.A	N.A	3	N.A	YES	YES	N.A	N.A	N.A						2.80		
	87831-5141	N.A	N.A	2														
	87831-5142	N.A	N.A	3	N.A	YES	YES	N.A	N.A	N.A						2.50		
	87831-6141	N.A	N.A	2														
	87831-6142	N.A	N.A	3	N.A	YES	N.A	YES	N.A	N.A						3.60 <sup>+0.15</sup> <sub>-0.30</sub>		
87831-6143	N.A	N.A	2															
87831-0443	N.A	N.A	2	N.A	YES	N.A	YES	N.A	N.A	3.60 <sup>+0.15</sup> <sub>-0.30</sub>								
87831-0444	N.A	N.A	3															

PLATING OPTIONS:

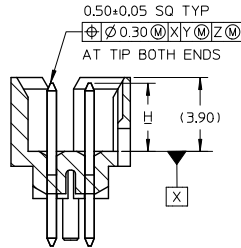
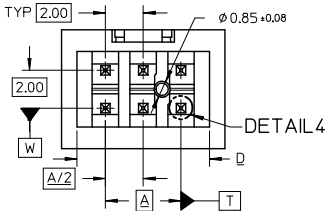
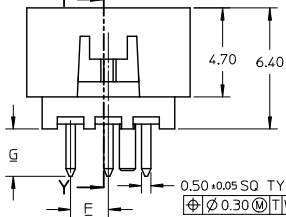
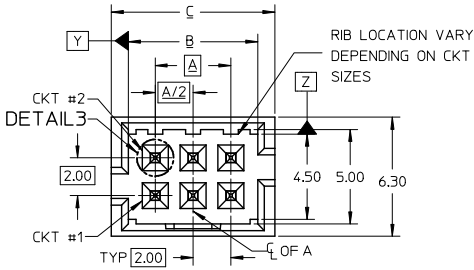
- 1 - 0.05-0.13um/2-5uin GOLD IN CONTACT AREA AND 1.88um/75uin MIN. MATTE TIN IN SOLDER TAIL AREA OVER 1.27um/50uin MIN. NICKEL OVERALL.
- 2 - 0.38um/15uin GOLD IN CONTACT AREA AND 1.88um/75uin MIN. MATTE TIN IN SOLDER TAIL AREA OVER 1.27um/50uin MIN. NICKEL OVERALL.
- 3 - 0.76um/30uin GOLD IN CONTACT AREA AND 1.88um/75uin MIN. MATTETIN IN SOLDER TAIL AREA OVER 1.27um/50uin MIN. NICKEL OVERALL.
- 4 - 2.50um/100uin MIN. MATTE TIN OVER 1.25um/50uin MIN. NICKEL OVERALL.

<p>SEE SHEET 1,2,4,6,8-10</p> <p>EC NO: S2017-0022</p> <p>DRWNGEN: MARY 2016/07/04</p> <p>CHKD: SCHEDONG 2016/07/27</p> <p>APPR: KHLIM 2016/07/28</p> <p>REV A5</p>	<p>QUALITY SYMBOLS</p> <p>√=0</p> <p>√=0</p> <p>√=0</p>	<p>GENERAL TOLERANCES (UNLESS SPECIFIED)</p> <table border="1"> <tr> <th></th> <th>mm</th> <th>INCH</th> </tr> <tr> <td>4 PLACES</td> <td>± ---</td> <td>± ---</td> </tr> <tr> <td>3 PLACES</td> <td>± ---</td> <td>± ---</td> </tr> <tr> <td>2 PLACES</td> <td>± 0.20</td> <td>± ---</td> </tr> <tr> <td>1 PLACE</td> <td>± ---</td> <td>± ---</td> </tr> <tr> <td>0 PLACE</td> <td>± ---</td> <td>± ---</td> </tr> </table> <p>ANGULAR ± 3°</p> <p>DRAFT WHERE APPLICABLE MUST REMAIN WITHIN DIMENSIONS</p>		mm	INCH	4 PLACES	± ---	± ---	3 PLACES	± ---	± ---	2 PLACES	± 0.20	± ---	1 PLACE	± ---	± ---	0 PLACE	± ---	± ---	<p>DIMENSION STYLE</p> <p>MM ONLY</p> <p>DRAWN BY DATE</p> <p>GMENARLY 2015/04/15</p> <p>CHECKED BY DATE</p> <p>CGOH 2015/06/29</p> <p>APPROVED BY DATE</p> <p>KHLIM 2015/06/29</p> <p>MATERIAL NO.</p> <p>SEE TABLE</p>	<p>SCALE NTS</p> <p>DESIGN UNITS METRIC</p> <p>THIRD ANGLE PROJECTION</p> <p>TITLE</p> <p>MILLIGRID</p> <p>2MM PITCH, THROUGH HOLE</p> <p>VERTICAL SHROUDED HEADER</p> <p><b>molex</b></p> <p>DOCUMENT NO. SD-87831-0001</p> <p>SHEET NO. 3 OF 13</p>
		mm	INCH																			
	4 PLACES	± ---	± ---																			
	3 PLACES	± ---	± ---																			
2 PLACES	± 0.20	± ---																				
1 PLACE	± ---	± ---																				
0 PLACE	± ---	± ---																				
<p>THIS DRAWING CONTAINS INFORMATION THAT IS PROPRIETARY TO MOLEX INCORPORATED AND SHOULD NOT BE USED WITHOUT WRITTEN PERMISSION</p>																						

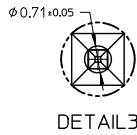
fb\_frame\_A3\_P\_AM\_T  
Rev. G 2012/01/11

9 8 7 6 5 4 3 2 1

6 CIRCUITS



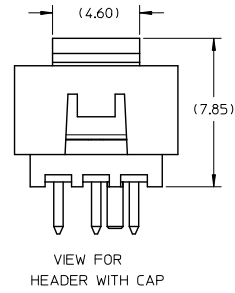
SECTION Y-Y



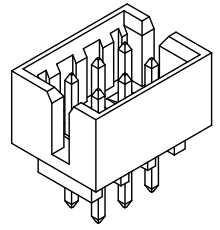
DETAIL 3



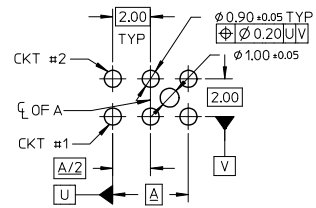
DETAIL 4



VIEW FOR HEADER WITH CAP



VIEW FOR HEADER WITH ONLY DUAL SLOTS



RECOMMENDED PCB LAYOUT

NOTES:

- MATERIALS:  
HOUSING: 30% GF, NYLON, UL94V-0, COLOR: BLACK  
PIN: 0.50MM SQ PHOSPHOR BRONZE
- FINISHES: REFER TO PLATING OPTIONS
- PRODUCT SPECIFICATION: PS-87831-027
- PACKAGING SPECIFICATION: SEE PACKAGING SPECS TABLE ON SHEET 1
- MATES WITH: A. MOLEX CRIMP RECEPTACLE HOUSING: 5110 SERIES AND CRIMP TERMINAL: 50394 SERIES  
B. MOLEX 2MM MILLIGRID DUAL ROW IDT: 87568 SERIES  
C. MOLEX 2MM MILLIGRID DUAL ROW RECEPTACLE: 79107 (GOLD PLATED), 78787 (TIN PLATED)

EDIT NOTE 4 EC NO: S2017-0022 DRAWN BY: GMENARLY 2016/07/06 CHECKED BY: CHYK-SCHONG 2016/07/27 APPR: KHL IM 2016/07/28 REV A5	QUALITY SYMBOLS	GENERAL TOLERANCES (UNLESS SPECIFIED)	DIMENSION STYLE	SCALE	DESIGN UNITS	THIRD ANGLE PROJECTION
	$\sqrt{\text{R}}=0$ $\sqrt{\text{S}}=0$ $\sqrt{\text{T}}=0$	mm INCH 4 PLACES ± --- ± --- 3 PLACES ± --- ± --- 2 PLACES ± 0.20 ± --- 1 PLACE ± --- ± --- 0 PLACE ± --- ± ---	MM ONLY	NTS	METRIC	◎ □ THIRD ANGLE PROJECTION
	DRAFT WHERE APPLICABLE WITHIN DIMENSIONS	ANGULAR ± 3° SEE TABLE	DRAWN BY: GMENARLY 2015/04/15 CHECKED BY: CGOH 2015/06/29 APPROVED BY: KHL IM 2015/06/29	TITLE	MILLIGRID 2MM PITCH, THROUGH HOLE VERTICAL SHROUDED HEADER	
	MATERIAL NO. SEE TABLE SIZE: A3	DOCUMENT NO. SD-87831-0001 SHEET NO. 4 OF 13	THIS DRAWING CONTAINS INFORMATION THAT IS PROPRIETARY TO MOLEX INCORPORATED AND SHOULD NOT BE USED WITHOUT WRITTEN PERMISSION			



10 9 8 7 6 5 4 3 2 1

6 CIRCUITS

CKT SIZE	ASSY P/N WITHOUT CAP IN TUBE	ASSY P/N WITH CAP IN TUBE	ASSY P/N WITH CAP IN T&R	PLATING OPTIONS	FRICTION LOCKS		SIDE SLOTS		CENTER POLARIZATION	PEG	DIMENSION												
					DUAL	CENTER	DUAL	SINGLE			A	B	C	D	E	F	G	H					
6	87831-0619	N.A	N.A	1	N.A	N.A	YES	N.A	N.A	N.A	4.00	6.85	8.65	7.00	N.A	N.A	2.50	3.60±0.20					
	87831-0620	N.A	N.A	2																			
	87831-0621	N.A	N.A	3																			
	87831-0636	N.A	N.A	4	N.A	N.A	YES	N.A	N.A	YES						N.A	2.50		2.80	2.50	2.50	2.50	3.60 <sup>+0.15</sup> <sub>-0.10</sub>
	87831-0628	N.A	N.A	2																			
	87831-0629	N.A	N.A	3																			
	87831-0641	N.A	N.A	2	N.A	YES	YES	N.A	N.A	N.A						N.A	2.50		2.50	2.50	2.50	2.50	3.60 <sup>+0.15</sup> <sub>-0.10</sub>
	87831-0642	N.A	87831-5552	3																			
	87831-5241	N.A	N.A	2																			
	87831-5242	N.A	N.A	3	N.A	YES	YES	N.A	N.A	N.A						N.A	2.50		2.50	2.50	2.50	2.50	3.60 <sup>+0.15</sup> <sub>-0.10</sub>
	87831-6241	N.A	N.A	2																			
	87831-6242	N.A	N.A	3																			
87831-0643	N.A	N.A	2	N.A	YES	N.A	YES	N.A	N.A	N.A	2.50	2.50	2.50	2.50	2.50	3.60 <sup>+0.15</sup> <sub>-0.10</sub>							
87831-0644	N.A	N.A	3																				
87831-0645	N.A	N.A	2																				
87831-0646	N.A	N.A	3	N.A	YES	YES	N.A	N.A	YES	N.A	2.50	2.50	2.50	2.50	2.50	3.60 <sup>+0.15</sup> <sub>-0.10</sub>							
87831-0632	N.A	N.A	2																				
87831-5119	N.A	N.A	1														N.A	N.A	YES	N.A	YES	N.A	N.A

PLATING OPTIONS:

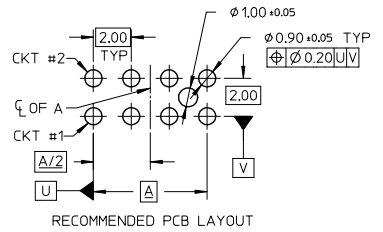
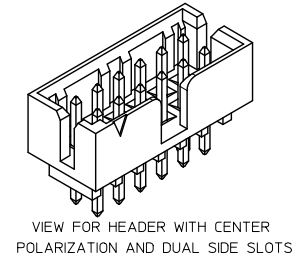
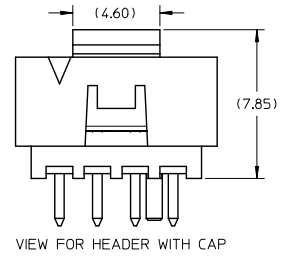
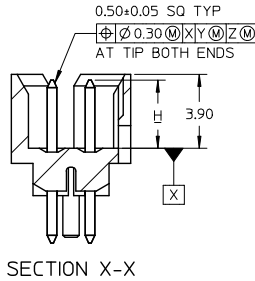
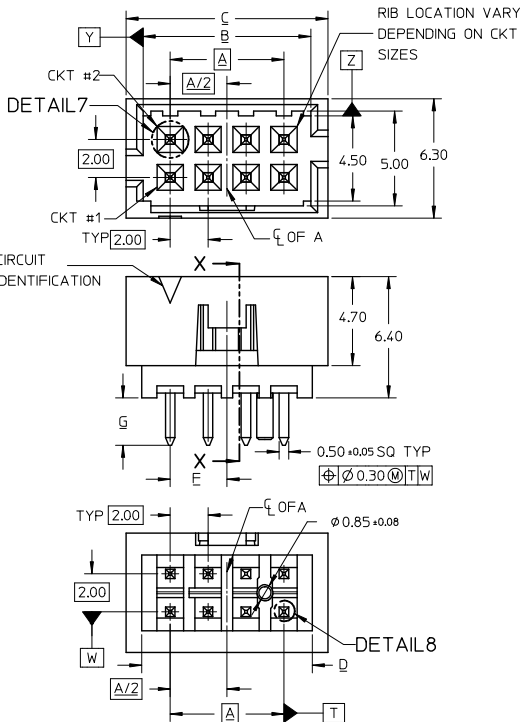
- 1 - 0.05-0.13um/2-5uin GOLD IN CONTACT AREA AND 1.88um/75uin MIN. MATTE TIN IN SOLDER TAIL AREA OVER 1.27um/50uin MIN. NICKEL OVERALL.
- 2 - 0.38um/15uin GOLD IN CONTACT AREA AND 1.88um/75uin MIN. MATTE TIN IN SOLDER TAIL AREA OVER 1.27um/50uin MIN. NICKEL OVERALL.
- 3 - 0.76um/30uin GOLD IN CONTACT AREA AND 1.88um/75uin MIN. MATTE TIN IN SOLDER TAIL AREA OVER 1.27um/50uin MIN. NICKEL OVERALL.
- 4 - 2.50um/100uin MIN. MATTE TIN OVER 1.25um/50uin MIN. NICKEL OVERALL.

SEE SHEET 1.2.4.6.8-10 IEC NO. S2017-0022 DRAWN BY: 2016/07/04 CHKD: SCHEONG 2016/07/27 APPR: KHLIM 2016/07/28	QUALITY SYMBOLS	GENERAL TOLERANCES (UNLESS SPECIFIED)	DIMENSION STYLE	SCALE	DESIGN UNITS	THIRD ANGLE PROJECTION
	$\nabla=0$ $\nabla=0$ $\nabla=0$	mm    INCH 4 PLACES ± --- ± --- 3 PLACES ± --- ± --- 2 PLACES ± 0.20 ± --- 1 PLACE ± --- ± --- 0 PLACE ± --- ± --- ANGULAR ± 3°	MM ONLY	NTS	METRIC	MILLIGRID 2MM PITCH, THROUGH HOLE VERTICAL SHROUDED HEADER
	DRAWN BY: GMENARLY CHECKED BY: CGOH APPROVED BY: KHLIM	DATE: 2015/04/15 DATE: 2015/06/29 DATE: 2015/06/29	MATERIAL NO. SEE TABLE	DOCUMENT NO. SD-87831-0001	SHEET NO. 5 OF 13	
	DRAFT WHERE APPLICABLE MUST REMAIN WITHIN DIMENSIONS					THIS DRAWING CONTAINS INFORMATION THAT IS PROPRIETARY TO MOLEX INCORPORATED AND SHOULD NOT BE USED WITHOUT WRITTEN PERMISSION

1b\_frame\_A3\_P\_AM\_T Rev. G 2012/01/11 9 8 7 6 5 4 3 2 1

10 9 8 7 6 5 4 3 2 1

8 TO 12 CIRCUITS



- NOTES:
- MATERIALS:  
HOUSING: 30% GF, NYLON, UL94V-0, COLOR: BLACK  
PIN: 0.50MM SQ PHOSPHOR BRONZE
  - FINISHES: REFER TO PLATING OPTIONS
  - PRODUCT SPECIFICATION: PS-87831-027
  - PACKAGING SPECIFICATION: SEE PACKAGING SPECS TABLE ON SHEET 1
  - MATES WITH: A. MOLEX CRIMP RECEPTACLE HOUSING: 51110 SERIES AND CRIMP TERMINAL: 50394 SERIES  
B. MOLEX 2MM MILLIGRID DUAL ROW IDT: 87568 SERIES  
C. MOLEX 2MM MILLIGRID DUAL ROW RECEPTACLE: 79107 (GOLD PLATED), 78787 (TIN PLATED)

EDIT NOTE 4 EC NO: S2017-0022 DRAWN: MENARLY 2016/07/04 CHKD: SCHEONG 2016/07/27 APPR: KHLIM 2016/07/28 REV A5	QUALITY SYMBOLS	GENERAL TOLERANCES (UNLESS SPECIFIED)	DIMENSION STYLE	SCALE	DESIGN UNITS	THIRD ANGLE PROJECTION
	$\nabla=0$ $\nabla=0$ $\nabla=0$	mm INCH 4 PLACES ± --- ± --- 3 PLACES ± --- ± --- 2 PLACES ± 0.20 ± --- 1 PLACE ± --- ± --- 0 PLACE ± --- ± --- ANGULAR ± 3°	MM ONLY	NTS	METRIC	M □
	DRAFT WHERE APPLICABLE MUST REMAIN WITHIN DIMENSIONS	DRAWN BY: GMENARLY 2015/04/15 CHECKED BY: CGOH 2015/06/29 APPROVED BY: KHLIM 2015/06/29	TITLE			MILLIGRID 2MM PITCH, THROUGH HOLE VERTICAL SHROUDED HEADER
		MATERIAL NO. SEE TABLE SIZE A3	DOCUMENT NO.			SD-87831-0001 SHEET NO. 6 OF 13

9 8 7 6 5 4 3 2 1







10 9 8 7 6 5 4 3 2 1

10 TO 12 CIRCUITS

CKT SIZE	ASSY P/N WITHOUT CAP IN TUBE	ASSY P/N WITH CAP IN TUBE	ASSY P/N WITH CAP IN T&R	PLATING OPTIONS	FRICTION LOCKS				SIDE SLOTS		CENTER POLARIZATION	PEG	DIMENSION							
					DUAL	CENTER	DUAL	SINGLE	A	B			C	D	E	F	G	H		
10	87831-1019	N.A	N.A	1									8.00	10.85	12.65	11.00	N.A	N.A	2.50	3.60±0.20
	87831-1020	N.A	N.A	2																
	87831-1021	N.A	N.A	3	N.A	N.A	YES	N.A	YES	N.A										
	87831-1036	N.A	N.A	4																
	87831-1010	N.A	N.A	2																
	87831-1011	N.A	N.A	3	N.A	N.A	YES	N.A	YES	N.A										
	87831-1028	N.A	N.A	2																
	87831-1029	N.A	87831-5557	3	N.A	N.A	YES	N.A	YES	YES										
	87831-1035	N.A	N.A	3	N.A	N.A	YES	N.A	YES	YES										
	87831-1041	N.A	N.A	2																
	87831-1042	N.A	87831-5553	3	N.A	YES	YES	N.A	N.A	N.A										
	87831-1032	N.A	N.A	2	N.A	YES	YES	N.A	N.A	YES										
87831-1043	N.A	N.A	2																	
87831-1044	N.A	N.A	3	N.A	YES	N.A	YES	N.A	N.A											
87831-1045	N.A	N.A	2																	
87831-1046	N.A	N.A	3	N.A	YES	N.A	YES	N.A	YES											
12	87831-1219	N.A	N.A	1								10.00	12.85	14.65	13.00	N.A	N.A	2.50	3.60±0.20	
	87831-1220	N.A	87831-5556	2																
	87831-1221	N.A	N.A	3	N.A	N.A	YES	N.A	YES	N.A										
	87831-1236	N.A	N.A	4																
	87831-1228	N.A	N.A	2																
	87831-1229	N.A	87831-5558	3	N.A	N.A	YES	N.A	YES	YES										
	87831-1241	N.A	N.A	2																
	87831-1242	N.A	N.A	3	N.A	YES	YES	N.A	N.A	N.A										
	87831-1255	87831-1256	N.A	2	N.A	YES	YES	N.A	N.A	N.A										
	87831-1232	N.A	N.A	2	N.A	YES	YES	N.A	N.A	YES										
	87831-1243	N.A	N.A	2																
	87831-1244	N.A	N.A	3	N.A	YES	N.A	YES	N.A	N.A										
87831-1245	N.A	N.A	2																	
87831-1246	N.A	N.A	3	N.A	YES	N.A	YES	N.A	YES											

PLATING OPTIONS:

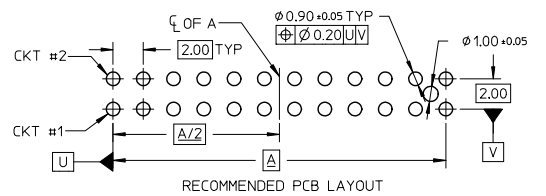
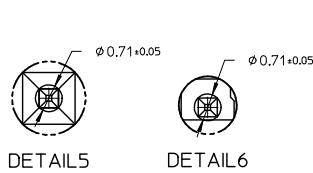
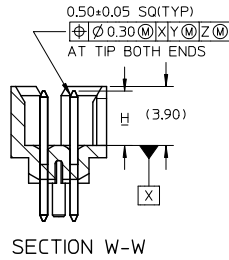
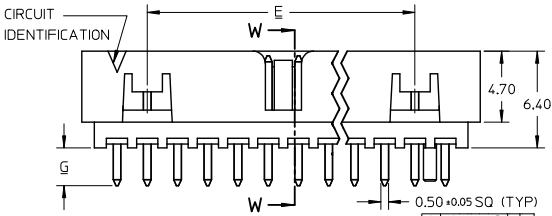
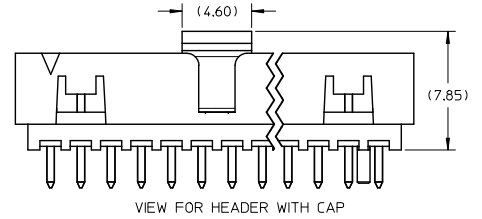
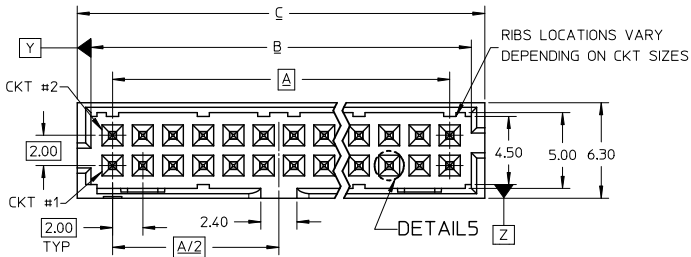
- 1 - 0.05-0.13um/2-5uin GOLD IN CONTACT AREA AND 1.88um/75uin MIN. MATTE TIN IN SOLDER TAIL AREA OVER 1.27um/50uin MIN. NICKEL OVERALL.
- 2 - 0.38um/15uin GOLD IN CONTACT AREA AND 1.88um/75uin MIN. MATTE TIN IN SOLDER TAIL AREA OVER 1.27um/50uin MIN. NICKEL OVERALL.
- 3 - 0.76um/30uin GOLD IN CONTACT AREA AND 1.88um/75uin MIN. MATTE TIN IN SOLDER TAIL AREA OVER 1.27um/50uin MIN. NICKEL OVERALL.
- 4 - 2.50um/100uin MIN. MATTE TIN OVER 1.25um/50uin MIN. NICKEL OVERALL.

ADD: 87831-5557-5558 EC NO: S2017-0022 DRAWN BY: CHYK-SCHONG CHECKED BY: KHLIM APPR: KHLIM REV: A5	QUALITY SYMBOLS ∇=0 ∇=0 ∇=0	GENERAL TOLERANCES (UNLESS SPECIFIED)		DIMENSION STYLE		SCALE	DESIGN UNITS	THIRD ANGLE PROJECTION		
				MM ONLY		NTS	METRIC			
				DRAWN BY: GMENARLY DATE: 2015/04/15		TITLE: MILLIGRID 2MM PITCH, THROUGH HOLE VERTICAL SHROUDED HEADER				
				CHECKED BY: CGOH DATE: 2015/06/29		APPROVED BY: KHLIM DATE: 2015/06/29		DOCUMENT NO. SD-87831-0001		SHEET NO. 8 OF 13
		ANGULAR ± 3°		MATERIAL NO. SEE TABLE		THIS DRAWING CONTAINS INFORMATION THAT IS PROPRIETARY TO MOLEX INCORPORATED AND SHOULD NOT BE USED WITHOUT WRITTEN PERMISSION				

10 9 8 7 6 5 4 3 2 1

10 9 8 7 6 5 4 3 2 1

14 TO 50 CIRCUITS



- NOTES:
- MATERIALS:  
HOUSING: 30% GF, NYLON, UL94V-0, COLOR: BLACK  
PIN: 0.50MM SQ PHOSPHOR BRONZE
  - FINISHES: REFER TO PLATING OPTIONS
  - PRODUCT SPECIFICATION: PS-87831-027
  - PACKAGING SPECIFICATION: SEE PACKAGING SPECS TABLE ON SHEET 1
  - MATES WITH: A. MOLEX CRIMP RECEPTACLE HOUSING: 51110 SERIES AND CRIMP TERMINAL: 50394 SERIES  
B. MOLEX 2MM MILLIGRID DUAL ROW IDT: 87568 SERIES  
C. MOLEX 2MM MILLIGRID DUAL ROW RECEPTACLE: 79107 (GOLD PLATED), 78787 (TIN PLATED)

EDIT NOTE 4 EC NO: S2017-0022 DRAWN BY: G MENARLY CHKD: SCHEONG APPR: KHLIM 2016/07/27 2016/07/28	QUALITY SYMBOLS	GENERAL TOLERANCES (UNLESS SPECIFIED)		DIMENSION STYLE MM ONLY		SCALE NTS	DESIGN UNITS METRIC	THIRD ANGLE PROJECTION
	▽=0	4 PLACES ± --- ± ---	mm	INCH	DRAWN BY G MENARLY	DATE 2015/04/15	TITLE MILLIGRID 2MM PITCH, THROUGH HOLE VERTICAL SHROUDED HEADER	
	▽=0	3 PLACES ± --- ± ---	DRAFT WHERE APPLICABLE MUST REMAIN WITHIN DIMENSIONS		CHECKED BY CGOH	DATE 2015/06/29	DOCUMENT NO. SD-87831-0001	
	▽=0	2 PLACES ± 0.20 ± ---	MATERIAL NO. SEE TABLE		APPROVED BY KHLIM	DATE 2015/06/29	SHEET NO. 9 OF 13	

9 8 7 6 5 4 3 2 1

10 9 8 7 6 5 4 3 2 1

14 TO 20 CIRCUITS

CKT SIZE	ASSY P/N WITHOUT CAP IN TUBE	ASSY P/N WITH CAP IN TUBE	ASSY P/N WITH CAP IN T&R	PLATING OPTIONS	FRICTION LOCKS		SIDE SLOTS		CENTER POLARIZATION	PEG	DIMENSION							
					DUAL	CENTER	DUAL	SINGLE			A	B	C	D	E	F	G	H
14	87831-1419	N.A	N.A	1							12.00	14.85	16.65	15.00	8.00	N.A	2.50	3.60±0.20
	87831-1420	87831-1430	87831-5554	2	YES	N.A	YES	N.A	YES	N.A								
	87831-1421	N.A	N.A	3														
	87831-1436	N.A	N.A	4														
	87831-1428	N.A	N.A	2	YES	N.A	YES	N.A	YES	YES								
	87831-1429	N.A	N.A	3	YES	N.A	YES	N.A	YES	YES								
	87831-1435	N.A	N.A	3	YES	N.A	YES	N.A	YES	YES								
	87831-1410	N.A	N.A	2	YES	N.A	YES	N.A	YES	N.A								
87831-1411	N.A	N.A	3															
16	87831-1619	N.A	N.A	1							14.00	16.85	18.65	17.00	10.00	N.A	2.50	3.60±0.20
	87831-1620	N.A	N.A	2	YES	N.A	YES	N.A	YES	N.A								
	87831-1621	N.A	N.A	3														
	87831-1636	N.A	N.A	4														
	87831-1628	N.A	N.A	2	YES	N.A	YES	N.A	YES	YES								
	87831-1629	N.A	87831-5559	3	YES	N.A	YES	N.A	YES	YES								
87831-1635	N.A	N.A	3	YES	N.A	YES	N.A	YES	YES									
18	87831-1819	N.A	N.A	1							16.00	18.85	20.65	19.00	12.00	N.A	2.50	3.60±0.20
	87831-1820	N.A	N.A	2	YES	N.A	YES	N.A	YES	N.A								
	87831-1821	N.A	N.A	3														
	87831-1836	N.A	N.A	4														
	87831-1828	N.A	N.A	2	YES	N.A	YES	N.A	YES	YES								
	87831-1829	N.A	N.A	3	YES	N.A	YES	N.A	YES	YES								
20	87831-2019	N.A	N.A	1							18.00	20.85	22.65	21.00	14.00	N.A	2.50	3.60±0.20
	87831-2020	N.A	N.A	2	YES	N.A	YES	N.A	YES	N.A								
	87831-2021	N.A	N.A	3														
	87831-2036	N.A	N.A	4														
	87831-2028	N.A	N.A	2	YES	N.A	YES	N.A	YES	YES								
	87831-2029	N.A	N.A	3	YES	N.A	YES	N.A	YES	YES								
	87831-2035	N.A	N.A	3	YES	N.A	YES	N.A	YES	YES								
	87831-2010	N.A	N.A	2	YES	N.A	YES	N.A	YES	N.A								
87831-2011	N.A	N.A	3															

PLATING OPTIONS:

- 1 - 0.05-0.13um/2-5uin GOLD IN CONTACT AREA AND 1.88um/75uin MIN. MATTE TIN IN SOLDER TAIL AREA OVER 1.27um/50uin MIN. NICKEL OVERALL.
- 2 - 0.38um/15uin GOLD IN CONTACT AREA AND 1.88um/75uin MIN. MATTE TIN IN SOLDER TAIL AREA OVER 1.27um/50uin MIN. NICKEL OVERALL.
- 3 - 0.76um/30uin GOLD IN CONTACT AREA AND 1.88um/75uin MIN. MATTE TIN IN SOLDER TAIL AREA OVER 1.27um/50uin MIN. NICKEL OVERALL.
- 4 - 2.50um/100uin MIN. MATTE TIN OVER 1.25um/50uin MIN. NICKEL OVERALL.

ADD 87831-5559 EC NO. S2017-0022 DRAWN BY: CHYK-SCHONG CHKD: KHLIM APPR: KHLIM 2016/07/27 2016/07/28	QUALITY SYMBOLS ∇=0 ∇=0 ∇=0	GENERAL TOLERANCES (UNLESS SPECIFIED)		DIMENSION STYLE MM ONLY		SCALE NTS	DESIGN UNITS METRIC	THIRD ANGLE PROJECTION	
		4 PLACES ± --- ± --- 3 PLACES ± --- ± --- 2 PLACES ± 0.20 ± --- 1 PLACE ± --- ± --- 0 PLACE ± --- ± ---	mm INCH	DRAWN BY GMENARLY	DATE 2015/04/15	TITLE MILLIGRID 2MM PITCH, THROUGH HOLE VERTICAL SHROUDED HEADER			
		ANGULAR ± 3°		CHECKED BY CGOH	DATE 2015/06/29	APPROVED BY KHLIM			
		DRAFT WHERE APPLICABLE MUST REMAIN WITHIN DIMENSIONS		MATERIAL NO. SEE TABLE		DOCUMENT NO. SD-87831-0001	SHEET NO. 10 OF 13		

9 8 7 6 5 4 3 2 1



10 9 8 7 6 5 4 3 2 1

22 TO 30 CIRCUITS

CKT SIZE	ASSY P/N WITHOUT CAP IN TUBE	ASSY P/N WITH CAP IN TUBE	ASSY P/N WITH CAP IN T&R	PLATING OPTIONS	FRICTION LOCKS		SIDE SLOTS		CENTER POLARIZATION	PEG	DIMENSION								
					DUAL	CENTER	DUAL	SINGLE			A	B	C	D	E	F	G	H	
22	87831-2219	N.A	N.A	1	YES	N.A	YES	N.A	YES	N.A	20.00	22.85	24.65	23.00	16.00	N.A	2.50	3.60±0.20	
	87831-2220	N.A	N.A	2															
	87831-2221	N.A	N.A	3															
	87831-2236	N.A	N.A	4															
	87831-2228	N.A	N.A	2															
22	87831-2229	N.A	N.A	3	YES	N.A	YES	N.A	YES	YES							2.50		
	87831-2419	N.A	N.A	1	YES	N.A	YES	N.A	YES	N.A	22.00	24.85	26.65	25.00	18.00	N.A	2.50	3.60±0.20	
24	87831-2420	N.A	N.A	2															
	87831-2421	N.A	N.A	3															
	87831-2436	N.A	N.A	4															
	87831-2428	N.A	N.A	2															
24	87831-2429	N.A	N.A	3	YES	N.A	YES	N.A	YES	YES							2.50		
	87831-2435	N.A	N.A	3	YES	N.A	YES	N.A	YES	YES							3.50		
	87831-2410	N.A	N.A	2	YES	N.A	YES	N.A	YES	N.A							3.50		
	26	87831-2619	N.A	N.A	1	YES	N.A	YES	N.A	YES	N.A	24.00	26.85	28.65	27.00	20.00	N.A	2.50	3.60±0.20
		87831-2620	87831-2630	87831-5555	2														
87831-2621		N.A	N.A	3															
87831-2636		N.A	N.A	4															
87831-2628		N.A	N.A	2															
26	87831-2629	N.A	N.A	3	YES	N.A	YES	N.A	YES	YES							2.50		
	87831-2610	N.A	N.A	2	YES	N.A	YES	N.A	YES	N.A							3.50		
	28	87831-2819	N.A	N.A	1	YES	N.A	YES	N.A	YES	N.A	26.00	28.85	30.65	29.00	22.00	N.A	2.50	3.60±0.20
		87831-2820	N.A	N.A	2														
		87831-2821	N.A	N.A	3														
87831-2836		N.A	N.A	4															
87831-2828		N.A	N.A	2															
28	87831-2829	N.A	N.A	3	YES	N.A	YES	N.A	YES	YES							2.50		
	30	87831-3019	N.A	N.A	1	YES	N.A	YES	N.A	YES	N.A	28.00	30.85	32.65	31.00	24.00	N.A	2.50	3.60±0.20
		87831-3020	N.A	N.A	2														
		87831-3021	N.A	N.A	3														
		87831-3036	N.A	N.A	4														
87831-3028		N.A	N.A	2															
30	87831-3029	N.A	N.A	3	YES	N.A	YES	N.A	YES	YES							2.50		
	87831-3035	N.A	N.A	3	YES	N.A	YES	N.A	YES	YES							3.50		
	87831-3010	87831-3030	87831-3050	2	YES	N.A	YES	N.A	YES	N.A							3.50		

PLATING OPTIONS:

- 1 - 0.05-0.13um/2-5uin GOLD IN CONTACT AREA AND 1.88um/75uin MIN. MATTE TIN IN SOLDER TAIL AREA OVER 1.27um/50uin MIN. NICKEL OVERALL.
- 2 - 0.38um/15uin GOLD IN CONTACT AREA AND 1.88um/75uin MIN. MATTE TIN IN SOLDER TAIL AREA OVER 1.27um/50uin MIN. NICKEL OVERALL.
- 3 - 0.76um/30uin GOLD IN CONTACT AREA AND 1.88um/75uin MIN. MATTE TIN IN SOLDER TAIL AREA OVER 1.27um/50uin MIN. NICKEL OVERALL.
- 4 - 2.50um/100uin MIN. MATTE TIN OVER 1.25um/50uin MIN. NICKEL OVERALL.

SEE SHEET 1.2.4.6.8-10  
 IEC NO: S2017-0022  
 DRAWN BY: CHYK-SCHROING  
 CHECKED BY: KHLIM  
 APPROVED BY: KHLIM  
 DATE: 2016/07/28  
 DATE: 2016/07/28  
 DATE: 2016/07/28  
 REV: A5

QUALITY SYMBOLS

	GENERAL TOLERANCES (UNLESS SPECIFIED)	
	mm	INCH
4 PLACES	±---	±---
3 PLACES	±---	±---
2 PLACES	±0.20	±---
1 PLACE	±---	±---
0 PLACE	±---	±---

ANGULAR ± 3°  
 DRAFT WHERE APPLICABLE MUST REMAIN WITHIN DIMENSIONS

DIMENSION STYLE		SCALE	DESIGN UNITS	THIRD ANGLE PROJECTION
MM ONLY		NTS	METRIC	
DRAWN BY	DATE	MILLIGRID	2MM PITCH, THROUGH HOLE	VERTICAL SHROUDED HEADER
GEMENARLY	2015/04/15			
CHECKED BY	DATE			
CGOH	2015/06/29	<b>molex</b>		
APPROVED BY	DATE			
KHLIM	2015/06/29	MATERIAL NO.	DOCUMENT NO.	SHEET NO.
		SEE TABLE	SD-87831-0001	11 OF 13

THIS DRAWING CONTAINS INFORMATION THAT IS PROPRIETARY TO MOLEX INCORPORATED AND SHOULD NOT BE USED WITHOUT WRITTEN PERMISSION

ib\_frame\_A3\_P\_AM\_T Rev. G 2012/01/11 9 8 7 6 5 4 3 2 1



10 9 8 7 6 5 4 3 2 1

32 TO 40 CIRCUITS

F	CKT SIZE	ASSY P/N WITHOUT CAP IN TUBE	ASSY P/N WITH CAP IN TUBE	ASSY P/N WITH CAP IN T&R	PLATING OPTIONS	FRICTION LOCKS		SIDE SLOTS		CENTER POLARIZATION	PEG	DIMENSION						
						DUAL	CENTER	DUAL	SINGLE			A	B	C	D	E	F	G
32	87831-3219	N.A	N.A	1	YES	N.A	YES	N.A	YES	N.A	30.00	32.85	34.65	33.00	26.00	N.A	2.50	3.60±0.20
	87831-3220	N.A	N.A	2														
	87831-3221	N.A	N.A	3														
	87831-3236	N.A	N.A	4														
	87831-3228	N.A	N.A	2														
34	87831-3419	N.A	N.A	1	YES	N.A	YES	N.A	YES	N.A	32.00	34.85	36.65	35.00	28.00	N.A	2.50	3.60±0.20
	87831-3420	N.A	N.A	2														
	87831-3421	N.A	N.A	3														
	87831-3436	N.A	N.A	4														
	87831-3428	N.A	N.A	2														
36	87831-3619	N.A	N.A	1	YES	N.A	YES	N.A	YES	N.A	34.00	36.85	38.65	37.00	30.00	N.A	2.50	3.60±0.20
	87831-3620	N.A	N.A	2														
	87831-3621	N.A	N.A	3														
	87831-3636	N.A	N.A	4														
	87831-3628	N.A	N.A	2														
38	87831-3819	N.A	N.A	1	YES	N.A	YES	N.A	YES	N.A	36.00	38.85	40.65	39.00	32.00	N.A	2.50	3.60±0.20
	87831-3820	N.A	N.A	2														
	87831-3821	N.A	N.A	3														
	87831-3836	N.A	N.A	4														
	87831-3828	N.A	N.A	2														
40	87831-4019	N.A	N.A	1	YES	N.A	YES	N.A	YES	N.A	38.00	40.85	42.65	41.00	34.00	N.A	2.50	3.60±0.20
	87831-4020	N.A	N.A	2														
	87831-4021	N.A	N.A	3														
	87831-4036	N.A	N.A	4														
	87831-4028	N.A	N.A	2														

PLATING OPTIONS:

- 1 - 0.05-0.13um/2-5uin GOLD IN CONTACT AREA AND 1.88um/75uin MIN. MATTE TIN IN SOLDER TAIL AREA OVER 1.27um/50uin MIN. NICKEL OVERALL.
- 2 - 0.38um/15uin GOLD IN CONTACT AREA AND 1.88um/75uin MIN. MATTE TIN IN SOLDER TAIL AREA OVER 1.27um/50uin MIN. NICKEL OVERALL.
- 3 - 0.76um/30uin GOLD IN CONTACT AREA AND 1.88um/75uin MIN. MATTE TIN IN SOLDER TAIL AREA OVER 1.27um/50uin MIN. NICKEL OVERALL.
- 4 - 2.50um/100uin MIN. MATTE TIN OVER 1.25um/50uin MIN. NICKEL OVERALL.

SEE SHEET 12.4.6.8-10 EC. NO. S2017-0022 DRAWN BY: IDRW:HEWARY 2016/07/04 CHKD: SCHEONG 2016/07/27 APPR: KHLIM 2016/07/28 REV: A5	QUALITY SYMBOLS ∇=0 ∇=0 ∇=0	GENERAL TOLERANCES (UNLESS SPECIFIED) 4 PLACES ± --- ± --- 3 PLACES ± --- ± --- 2 PLACES ± 0.20 ± --- 1 PLACE ± --- ± --- 0 PLACE ± --- ± --- ANGULAR ± 3° DRAFT WHERE APPLICABLE MUST REMAIN WITHIN DIMENSIONS	DIMENSION STYLE MM ONLY DRAWN BY: GMENARLY DATE: 2015/04/15 CHECKED BY: CGOH DATE: 2015/06/29 APPROVED BY: KHLIM DATE: 2015/06/29	SCALE: NTS DESIGN UNITS: METRIC THIRD ANGLE PROJECTION	TITLE: MILLIGRID 2MM PITCH, THROUGH HOLE VERTICAL SHROUDED HEADER <b>molex</b> MATERIAL NO. SEE TABLE DOCUMENT NO. SD-87831-0001	SHEET NO. 12 OF 13
	THIS DRAWING CONTAINS INFORMATION THAT IS PROPRIETARY TO MOLEX INCORPORATED AND SHOULD NOT BE USED WITHOUT WRITTEN PERMISSION					
	SIZE: A3					
	SEE TABLE					

9 8 7 6 5 4 3 2 1

10 9 8 7 6 5 4 3 2 1

42 TO 50 CIRCUITS

CKT SIZE	ASSY P/N WITHOUT CAP IN TUBE	ASSY P/N WITH CAP IN TUBE	ASSY P/N WITH CAP IN T&R	PLATING OPTIONS	FRICTION LOCKS		SIDE SLOTS		CENTER POLARIZATION	PEG	DIMENSION										
					DUAL	CENTER	DUAL	SINGLE			A	B	C	D	E	F	G	H			
42	87831-4219	N.A	N.A	1							40.00	42.85	44.65	43.00	36.00	N.A	2.50	3.60±0.20			
	87831-4220	N.A	N.A	2																	
	87831-4221	N.A	N.A	3	YES	N.A	YES	N.A	YES	N.A											
	87831-4236	N.A	N.A	4																	
	87831-4228	N.A	N.A	2																	
	87831-4229	N.A	N.A	3	YES	N.A	YES	N.A	YES	YES									2.50		
44	87831-4419	N.A	N.A	1							42.00	44.85	46.65	45.00	38.00	N.A	2.50	3.60±0.20			
	87831-4420	N.A	N.A	2																	
	87831-4421	N.A	N.A	3	YES	N.A	YES	N.A	YES	N.A											
	87831-4436	N.A	N.A	4																	
	87831-4428	N.A	N.A	2	YES	N.A	YES	N.A	YES	YES											
	87831-4429	N.A	N.A	3																	
	87831-4435	N.A	N.A	3	YES	N.A	YES	N.A	YES	YES											3.50
46	87831-4619	N.A	N.A	1							44.00	46.85	48.65	47.00	40.00	N.A	2.50	3.60±0.20			
	87831-4620	N.A	N.A	2																	
	87831-4621	N.A	N.A	3	YES	N.A	YES	N.A	YES	N.A											
	87831-4636	N.A	N.A	4																	
	87831-4628	N.A	N.A	2																	
	87831-4629	N.A	N.A	3	YES	N.A	YES	N.A	YES	YES											2.50
48	87831-4819	N.A	N.A	1							46.00	48.85	50.65	49.00	42.00	N.A	2.50	3.60±0.20			
	87831-4820	N.A	N.A	2																	
	87831-4821	N.A	N.A	3	YES	N.A	YES	N.A	YES	N.A											
	87831-4836	N.A	N.A	4																	
	87831-4828	N.A	N.A	2	YES	N.A	YES	N.A	YES	YES											
	87831-4829	N.A	N.A	3																	2.50
50	87831-5019	N.A	N.A	1							48.00	50.85	52.65	51.00	44.00	N.A	2.50	3.60±0.20			
	87831-5020	N.A	N.A	2																	
	87831-5021	N.A	N.A	3	YES	N.A	YES	N.A	YES	N.A											
	87831-5036	N.A	N.A	4																	
	87831-5028	N.A	N.A	2																	
	87831-5029	N.A	N.A	3	YES	N.A	YES	N.A	YES	YES											2.50
	87831-5035	N.A	N.A	3	YES	N.A	YES	N.A	YES	YES											3.50

PLATING OPTIONS:

- 1 - 0.05-0.13um/2-5uin GOLD IN CONTACT AREA AND 1.88um/75uin MIN. MATTE TIN IN SOLDER TAIL AREA OVER 1.27um/50uin MIN. NICKEL OVERALL.
- 2 - 0.38um/15uin GOLD IN CONTACT AREA AND 1.88um/75uin MIN. MATTE TIN IN SOLDER TAIL AREA OVER 1.27um/50uin MIN. NICKEL OVERALL.
- 3 - 0.76um/30uin GOLD IN CONTACT AREA AND 1.88um/75uin MIN. MATTE TIN IN SOLDER TAIL AREA OVER 1.27um/50uin MIN. NICKEL OVERALL.
- 4 - 2.50um/100uin MIN. MATTE TIN OVER 1.25um/50uin MIN. NICKEL OVERALL.

SEE SHEET 1.2.4.6.8-10 IEC NO. S2017-0022 DRAWN BY: GMENARLY 2016/07/16 CHECKED BY: CHIKO-SCHEONG 2016/07/27 APPR: KHL IM 2016/07/28 REV: A5	QUALITY SYMBOLS √=0 √=0 √=0	GENERAL TOLERANCES (UNLESS SPECIFIED) 4 PLACES ± --- ± --- 3 PLACES ± --- ± --- 2 PLACES ± 0.20 ± --- 1 PLACE ± --- ± --- 0 PLACE ± --- ± ---	DIMENSION STYLE MM ONLY DRAWN BY: GMENARLY DATE: 2015/04/15 CHECKED BY: CGOH DATE: 2015/06/29 APPROVED BY: KHL IM DATE: 2015/06/29	SCALE: NTS DESIGN UNITS: METRIC THIRD ANGLE PROJECTION	TITLE: MILLIGRID 2MM PITCH, THROUGH HOLE VERTICAL SHROUDED HEADER <b>molex</b> MATERIAL NO. SEE TABLE DOCUMENT NO. SD-87831-0001 SHEET NO. 13 OF 13
	ANGULAR ± 3° DRAFT WHERE APPLICABLE MUST REMAIN WITHIN DIMENSIONS		THIS DRAWING CONTAINS INFORMATION THAT IS PROPRIETARY TO MOLEX INCORPORATED AND SHOULD NOT BE USED WITHOUT WRITTEN PERMISSION		
			SIZE: A3		

tb\_frame\_A3\_P\_AM\_T  
Rev. G 2012/01/11

9 8 7 6 5 4 3 2 1