



Excellent Integrated System Limited

Stocking Distributor

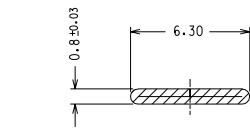
Click to view price, real time Inventory, Delivery & Lifecycle Information:

[Molex Connector Corporation](#)
[0940304071](#)

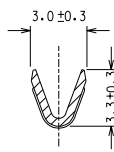
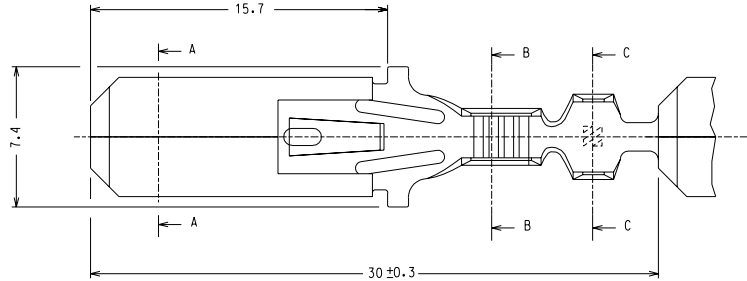
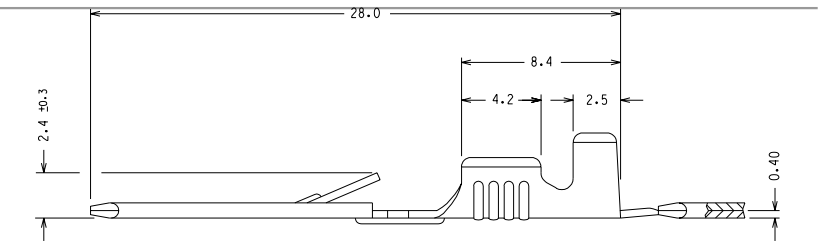
For any questions, you can email us directly:

sales@integrated-circuit.com

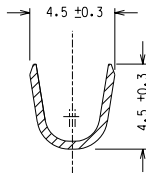
Contact us: sales@integrated-circuit.com Website: www.integrated-circuit.com



SECTION A - A



SECTION B - B



SECTION C - C

CODICE P/N	MATERIALE MATERIAL	FINITURA PLATING	NOTE NOTE
94030-4070	OTTONE BRASS	GREGGIO/ PLAIN	
94030-4071	OTTONE BRASS	STAGNATO/ TIN	
94030-4072	BRONZO FOSF. PHOSPH. BRONZE	GREGGIO/ PLAIN	
94030-4073	BRONZO FOSF. PHOSPH. BRONZE	STAGNATO/ TIN	
94030-4079	OTTONE/ BRASS	GREGGIO/ PLAIN	AVVOLTO CON CARTA INTERMEDIA WOUND WITH INTERLEAF PAPER

L.T.R. REVISIONS		DIMENSIONS SHOWN (METRIC) INCH		DRWG BY	REVISE ONLY ON CAD SYSTEM		SH.	REV.	
A2	ECN 76-117 05-04-96 S.L. Aggiunto codice 94030-4079	UNLESS OTHERWISE SPECIFIED TOLERANCES ANGULAR ± 0.1		Gottardo	CAD/CAM FILENAME	THIS DRAWING CONTAINS INFORMATION THAT IS PROPRIETARY TO MOLEX INC AND SHOULD NOT BE USED WITHOUT WRITTEN PERMISSION			
A1	ECN 23-169 25-11-93 G.F. Aggiunto numero su definitio	INCH (METRIC)		CHK'D BY	CAD FILE	030407XS			
A	ECN 70-004 G.F. 10-01-90	3 PLACE ±		APP'D BY	TITLE	TERMINALE MASCHIO DA 6.3 x 0.8 MALE TERMINAL 6.3 x 0.8			
		2 PLACE ±	± 0.1	SCALE	SEZ. RAME/ WIRE RANGE: 0.5-1.0 mm ² - ISOLANTE/ INS. RANGE: Ø 2.0-3.3 mm	SHEET NO. DATE			
		1 PLACE ±	± 0.2	5 : 1	PREVIATO	1 / 1 09-01-90			
		DESIGN DIMENSION (PRIMARY) □ (MM) □ (IN)			MOLEX	MOLEX INCORPORATED			
		EQUIVALENT DIMENSION (SECONDARY) □ (MM) □ (IN)			PART NO.	VEDI TABELLA SEE CHART	DWG NO.	94030-407X SD	SIZE B