



Distributor of Molex Connector Corporation: Excellent Integrated System Limited
Datasheet of 0386006618 - Connector Barrier Block Strip 18 Circuit 0.250" (6.35mm)

Contact us: sales@integrated-circuit.com Website: www.integrated-circuit.com

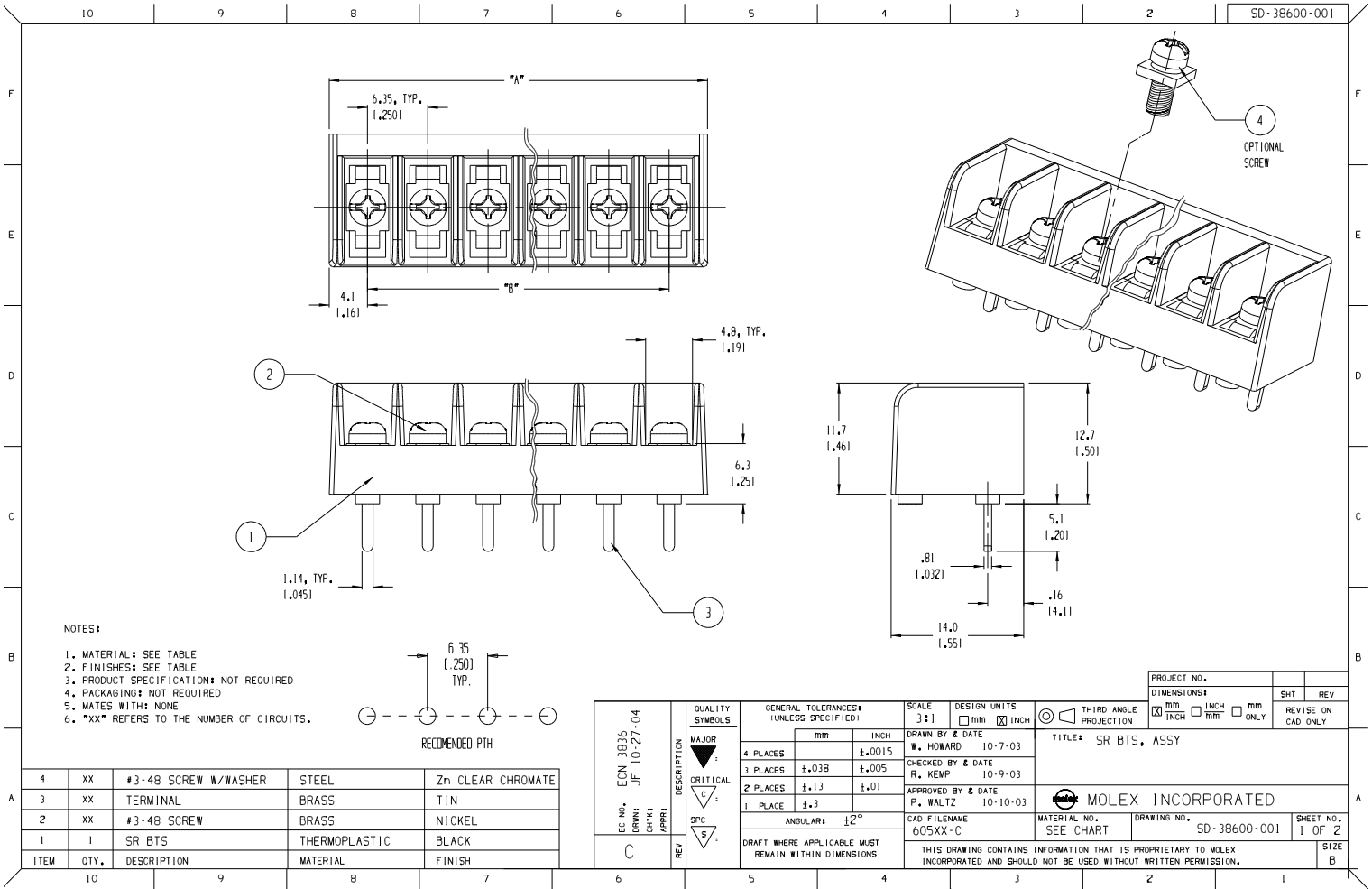
Excellent Integrated System Limited

Stocking Distributor

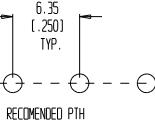
Click to view price, real time Inventory, Delivery & Lifecycle Information:

[Molex Connector Corporation](#)
[0386006618](#)

For any questions, you can email us directly:
sales@integrated-circuit.com



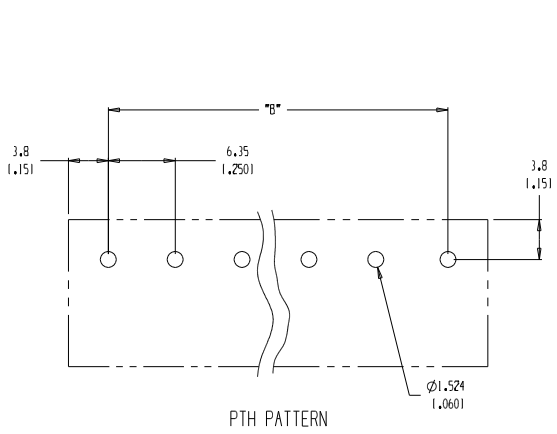
- NOTES:
1. MATERIAL: SEE TABLE
 2. FINISHES: SEE TABLE
 3. PRODUCT SPECIFICATION: NOT REQUIRED
 4. PACKAGING: NOT REQUIRED
 5. MATES WITH: NONE
 6. "XX" REFERS TO THE NUMBER OF CIRCUITS.



ITEM	QTY.	DESCRIPTION	MATERIAL	FINISH
4	XX	#3-48 SCREW W/WASHER	STEEL	Zn CLEAR CHROMATE
3	XX	TERMINAL	BRASS	TIN
2	XX	#3-48 SCREW	BRASS	NICKEL
1	1	SR BTS	THERMOPLASTIC	BLACK

EC NO.	ECN	DRAWN	CHK'D	APPR'D	DESCRIPTION	QUALITY SYMBOLS	GENERAL TOLERANCES: (UNLESS SPECIFIED)		SCALE	DESIGN UNITS	THIRD ANGLE PROJECTION	DIMENSIONS:			SHEET	REV
							mm	INCH				mm	INCH	mm ONLY		
C	3836	JF	10-27-04				4 PLACES	±0.015	3:1	INCH	THIRD ANGLE PROJECTION	mm	INCH	mm ONLY		
						MAJOR	3 PLACES	±0.038		mm						
						CRITICAL	2 PLACES	±0.13		INCH						
						SPEC	1 PLACE	±0.3		mm						
						ANGULAR		±2°								
							DRAFT WHERE APPLICABLE MUST REMAIN WITHIN DIMENSIONS				THIS DRAWING CONTAINS INFORMATION THAT IS PROPRIETARY TO MOLEX INCORPORATED AND SHOULD NOT BE USED WITHOUT WRITTEN PERMISSION.					
							DRAWN BY & DATE: W. HOWARD 10-7-03				TITLE: SR BTS, ASSY					
							CHECKED BY & DATE: R. KEMP 10-9-03				MATERIAL NO. SEE CHART					
							APPROVED BY & DATE: P. WALTZ 10-10-03				DRAWING NO. SD-38600-001					
							CAD FILENAME: 605XX-C				SHEET NO. 1 OF 2					
							MOLEX INCORPORATED				SIZE B					

10 9 8 7 6 5 4 3 2 SD-38600-001



NUMBER OF CIRCUITS "XX"	DIM. "A"		DIM. "B"		MATERIAL NO. (OPT -C, -50)	MATERIAL NO. (OPT -C)	MATERIAL NO. (INSULATOR)
02	14.48	1.5701	6.35	1.2501	38600-7802	38600-6602	38608-2735
03	20.83	1.8201	12.70	1.5001	38600-7803	38600-6603	38608-2736
04	27.18	1.0701	19.05	1.7501	38600-7804	38600-6604	38608-2737
05	33.53	1.3201	25.40	1.0001	38600-7805	38600-6605	38608-2738
06	39.88	1.5701	31.75	1.2501	38600-7806	38600-6606	38608-2739
07	46.23	1.8201	38.10	1.5001	38600-7807	38600-6607	38608-2740
08	52.58	2.0701	44.45	1.7501	38600-7808	38600-6608	38608-2741
09	58.93	2.3201	50.80	2.0001	38600-7809	38600-6609	38608-2742
10	65.28	2.5701	57.15	2.2501	38600-7810	38600-6610	38608-2743
11	71.63	2.8201	63.50	2.5001	38600-7811	38600-6611	38608-2744
12	77.98	3.0701	69.85	2.7501	38600-7812	38600-6612	38608-2745
13	84.33	3.3201	76.20	3.0001	38600-7813	38600-6613	38608-2746
14	90.68	3.5701	82.55	3.2501	38600-7814	38600-6614	38608-2747
15	97.03	3.8201	88.90	3.5001	38600-7815	38600-6615	38608-2748
16	103.38	4.0701	95.25	3.7501	38600-7816	38600-6616	38608-2749
17	109.73	4.3201	101.60	4.0001	38600-7817	38600-6617	38608-2750
18	116.08	4.5701	107.95	4.2501	38600-7818	38600-6619	38608-2751
19	122.43	4.8201	114.30	4.5001	38600-7819	38600-6619	38608-2752
20	128.78	5.0701	120.65	4.7501	38600-7820	38600-6620	38608-2753
21	135.13	5.3201	127.00	5.0001	38600-7821	38600-6621	38608-2754
22	141.48	5.5701	133.35	5.2501	38600-7822	38600-6622	38608-2755
23	147.83	5.8201	139.70	5.5001	38600-7823	38600-6623	38608-2756
24	154.18	6.0701	146.05	5.7501	38600-7824	38600-6624	38608-2757
25	160.53	6.3201	152.40	6.0001	38600-7825	38600-6625	38608-2758
26	166.88	6.5701	158.75	6.2501	38600-7826	38600-6626	38608-2759
27	173.23	6.8201	165.10	6.5001	38600-7827	38600-6627	38608-2760
28	179.58	7.0701	171.45	6.7501	38600-7828	38600-6628	38608-2761
29	185.93	7.3201	177.80	7.0001	38600-7829	38600-6629	38608-2762
30	192.28	7.5701	184.15	7.2501	38600-7830	38600-6630	38608-2763
31	198.63	7.8201	190.50	7.5001	38600-7831	38600-6631	38608-2764
32	204.98	8.0701	196.85	7.7501	38600-7832	38600-6632	38608-2765

EC. NO. 1 DRAWN BY: CHY/K CHECKED BY: APPRI REV. 1	SEE SHEET ONE	QUALITY SYMBOLS MAJOR CRITICAL SPC S	GENERAL TOLERANCES (UNLESS SPECIFIED) mm INCH 4 PLACES ±0.038 ±0.015 3 PLACES ±0.13 ±0.005 2 PLACES ±0.13 ±0.01 1 PLACE ±0.3 ±0.1 ANGULAR ±2°	SCALE 3:1 DESIGN UNITS mm [X] INCH DRAWN BY & DATE W. HOWARD 10-7-03 CHECKED BY & DATE R. KEMP 10-9-03 APPROVED BY & DATE P. WALTZ 10-10-03 CAD FILENAME 605XX-C	THIRD ANGLE PROJECTION TITLE: SR BTS, ASSY MOLEX INCORPORATED	PROJECT NO. DIMENSIONS: mm [X] INCH mm ONLY SMT REV REVISE ON CAD ONLY

DRAFT WHERE APPLICABLE MUST REMAIN WITHIN DIMENSIONS

THIS DRAWING CONTAINS INFORMATION THAT IS PROPRIETARY TO MOLEX INCORPORATED AND SHOULD NOT BE USED WITHOUT WRITTEN PERMISSION.

10 9 8 7 6 5 4 3 2 1