



**Distributor of Molex Connector Corporation: Excellent Integrated System Limited**  
Datasheet of 0386007815 - Connector Barrier Block Strip 15 Circuit 0.250" (6.35mm)

Contact us: [sales@integrated-circuit.com](mailto:sales@integrated-circuit.com) Website: [www.integrated-circuit.com](http://www.integrated-circuit.com)

---

## **Excellent Integrated System Limited**

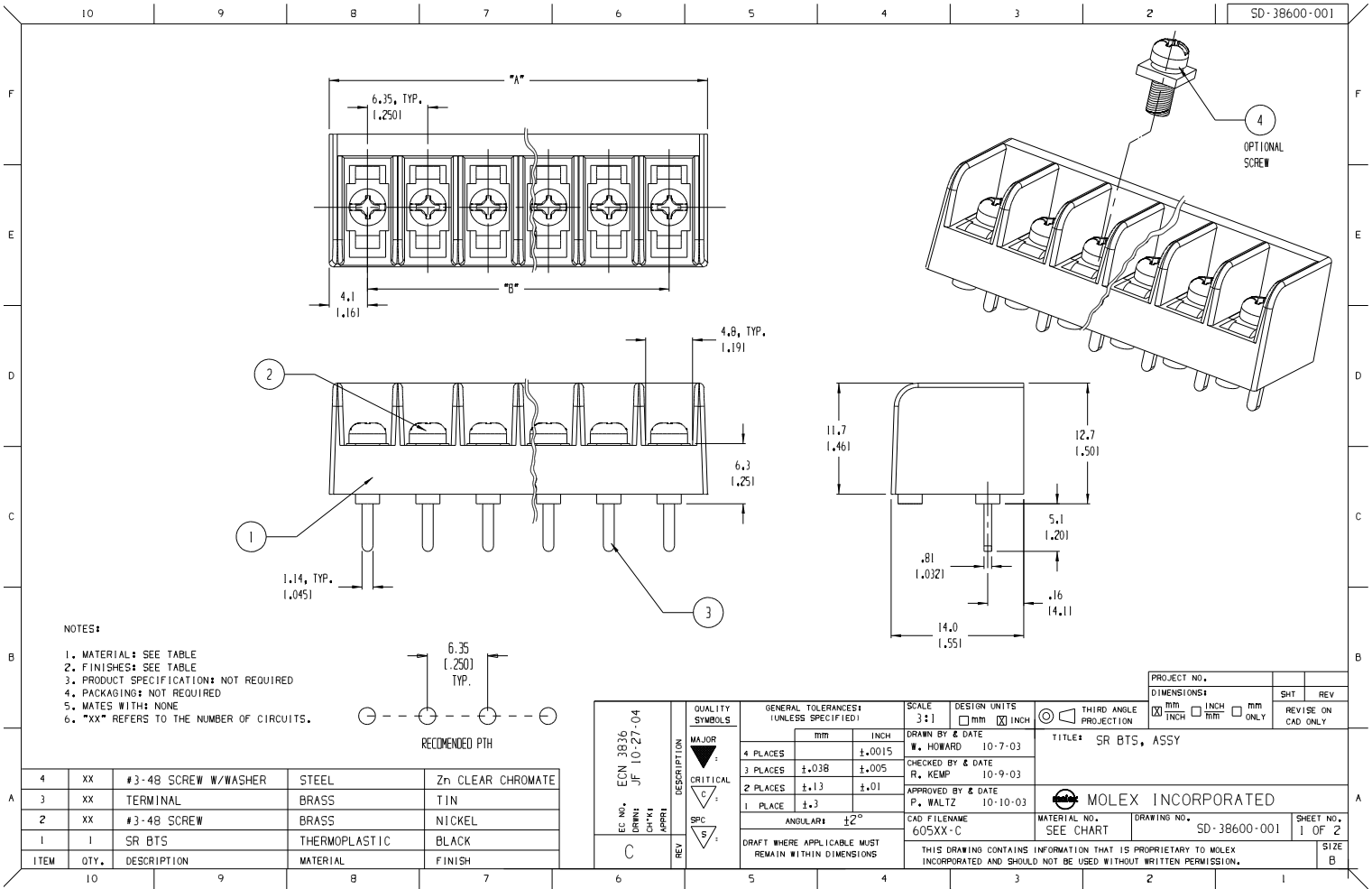
Stocking Distributor

Click to view price, real time Inventory, Delivery & Lifecycle Information:

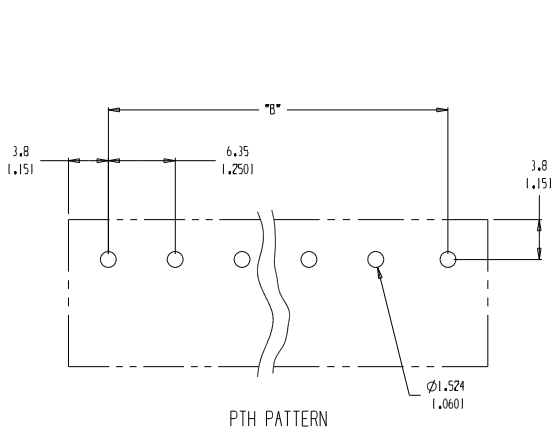
[Molex Connector Corporation](#)  
[0386007815](#)

For any questions, you can email us directly:

[sales@integrated-circuit.com](mailto:sales@integrated-circuit.com)



10 9 8 7 6 5 4 3 2 SD-38600-001



| NUMBER OF CIRCUITS "XX" | DIM. "A" |        | DIM. "B" |        | MATERIAL NO. (OPT -C, -50) | MATERIAL NO. (OPT -C) | MATERIAL NO. (INSULATOR) |
|-------------------------|----------|--------|----------|--------|----------------------------|-----------------------|--------------------------|
| 02                      | 14.48    | 1.5701 | 6.35     | 1.2501 | 38600-7802                 | 38600-6602            | 38608-2735               |
| 03                      | 20.83    | 1.8201 | 12.70    | 1.5001 | 38600-7803                 | 38600-6603            | 38608-2736               |
| 04                      | 27.18    | 1.0701 | 19.05    | 1.7501 | 38600-7804                 | 38600-6604            | 38608-2737               |
| 05                      | 33.53    | 1.3201 | 25.40    | 1.0001 | 38600-7805                 | 38600-6605            | 38608-2738               |
| 06                      | 39.88    | 1.5701 | 31.75    | 1.2501 | 38600-7806                 | 38600-6606            | 38608-2739               |
| 07                      | 46.23    | 1.8201 | 38.10    | 1.5001 | 38600-7807                 | 38600-6607            | 38608-2740               |
| 08                      | 52.58    | 2.0701 | 44.45    | 1.7501 | 38600-7808                 | 38600-6608            | 38608-2741               |
| 09                      | 58.93    | 2.3201 | 50.80    | 2.0001 | 38600-7809                 | 38600-6609            | 38608-2742               |
| 10                      | 65.28    | 2.5701 | 57.15    | 2.2501 | 38600-7810                 | 38600-6610            | 38608-2743               |
| 11                      | 71.63    | 2.8201 | 63.50    | 2.5001 | 38600-7811                 | 38600-6611            | 38608-2744               |
| 12                      | 77.98    | 3.0701 | 69.85    | 2.7501 | 38600-7812                 | 38600-6612            | 38608-2745               |
| 13                      | 84.33    | 3.3201 | 76.20    | 3.0001 | 38600-7813                 | 38600-6613            | 38608-2746               |
| 14                      | 90.68    | 3.5701 | 82.55    | 3.2501 | 38600-7814                 | 38600-6614            | 38608-2747               |
| 15                      | 97.03    | 3.8201 | 88.90    | 3.5001 | 38600-7815                 | 38600-6615            | 38608-2748               |
| 16                      | 103.38   | 4.0701 | 95.25    | 3.7501 | 38600-7816                 | 38600-6616            | 38608-2749               |
| 17                      | 109.73   | 4.3201 | 101.60   | 4.0001 | 38600-7817                 | 38600-6617            | 38608-2750               |
| 18                      | 116.08   | 4.5701 | 107.95   | 4.2501 | 38600-7818                 | 38600-6619            | 38608-2751               |
| 19                      | 122.43   | 4.8201 | 114.30   | 4.5001 | 38600-7819                 | 38600-6619            | 38608-2752               |
| 20                      | 128.78   | 5.0701 | 120.65   | 4.7501 | 38600-7820                 | 38600-6620            | 38608-2753               |
| 21                      | 135.13   | 5.3201 | 127.00   | 5.0001 | 38600-7821                 | 38600-6621            | 38608-2754               |
| 22                      | 141.48   | 5.5701 | 133.35   | 5.2501 | 38600-7822                 | 38600-6622            | 38608-2755               |
| 23                      | 147.83   | 5.8201 | 139.70   | 5.5001 | 38600-7823                 | 38600-6623            | 38608-2756               |
| 24                      | 154.18   | 6.0701 | 146.05   | 5.7501 | 38600-7824                 | 38600-6624            | 38608-2757               |
| 25                      | 160.53   | 6.3201 | 152.40   | 6.0001 | 38600-7825                 | 38600-6625            | 38608-2758               |
| 26                      | 166.88   | 6.5701 | 158.75   | 6.2501 | 38600-7826                 | 38600-6626            | 38608-2759               |
| 27                      | 173.23   | 6.8201 | 165.10   | 6.5001 | 38600-7827                 | 38600-6627            | 38608-2760               |
| 28                      | 179.58   | 7.0701 | 171.45   | 6.7501 | 38600-7828                 | 38600-6628            | 38608-2761               |
| 29                      | 185.93   | 7.3201 | 177.80   | 7.0001 | 38600-7829                 | 38600-6629            | 38608-2762               |
| 30                      | 192.28   | 7.5701 | 184.15   | 7.2501 | 38600-7830                 | 38600-6630            | 38608-2763               |
| 31                      | 198.63   | 7.8201 | 190.50   | 7.5001 | 38600-7831                 | 38600-6631            | 38608-2764               |
| 32                      | 204.98   | 8.0701 | 196.85   | 7.7501 | 38600-7832                 | 38600-6632            | 38608-2765               |

|   |  |  |  |  |   |  |                           |        |
|---|--|--|--|--|---|--|---------------------------|--------|
| EC NO. SEE SHEET<br>DRAWN CHY/KI<br>CHECKED<br>APPR'D<br>REV. | DESCRIPTION<br>MAJOR<br>CRITICAL<br>SPC<br>S | GENERAL TOLERANCES (UNLESS SPECIFIED)<br>mm INCH |  | SCALE 3:1<br>DESIGN UNITS<br><input type="checkbox"/> mm <input checked="" type="checkbox"/> INCH                              | THIRD ANGLE PROJECTION<br><input checked="" type="checkbox"/> mm INCH <input type="checkbox"/> INCH mm ONLY | PROJECT NO.<br>DIMENSIONS:   | SMT<br>REVISE ON CAD ONLY |        |
|   |  | DRAWN BY & DATE<br>W. HOWARD 10-7-03             |  | CHECKED BY & DATE<br>R. KEMP 10-9-03   |   | TITLE: SR BTS, ASSY  |                           |        |
| APPROVED BY & DATE<br>P. WALTZ 10-10-03                       |  | ANGLE: ±2°                                       |  | CAD FILENAME<br>605XX-C  |   | MATERIAL NO. SEE CHART<br>DRAWING NO. SD-38600-001<br>SHEET NO. 2 OF 2 |                           |        |
| DRAFT WHERE APPLICABLE MUST REMAIN WITHIN DIMENSIONS          |  |  |  | THIS DRAWING CONTAINS INFORMATION THAT IS PROPRIETARY TO MOLEX INCORPORATED AND SHOULD NOT BE USED WITHOUT WRITTEN PERMISSION. |   |  |                           | SIZE B |

10 9 8 7 6 5 4 3 2 1