



Distributor of Molex Connector Corporation: Excellent Integrated System Limited

Datasheet of 0387044106 - Connector Barrier Block Strip 6 Circuit 0.325" (8.26mm)

Contact us: sales@integrated-circuit.com Website: www.integrated-circuit.com

Excellent Integrated System Limited

Stocking Distributor

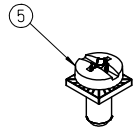
Click to view price, real time Inventory, Delivery & Lifecycle Information:

[Molex Connector Corporation](#)

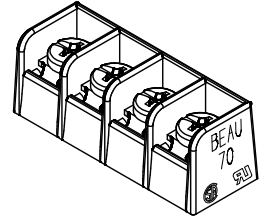
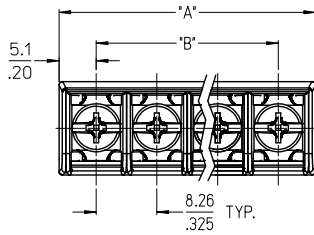
[0387044106](#)

For any questions, you can email us directly:

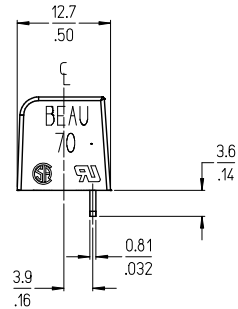
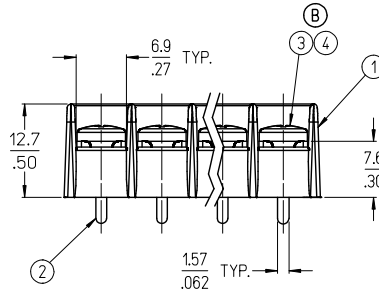
sales@integrated-circuit.com



REF. -50 OPT. SCREW
(WHERE APPLICABLE)



4 CIRCUIT SHOWN



NOTES:

1. MATERIAL: SEE TABLE
2. FINISHES: SEE TABLE
3. "XX" REFERS TO THE QUANTITY OF CIRCUITS
4. ROHS COMPLIANT

5	XX	SCREW&WASHER, #6-32X.25, PAN, PH/SL (-50 OPT)	STEEL	ZN, CLEAR CHROMATE	ADD STD AND -49 OPT EC. NO: WNA2009-0702 DRAWN: ENCLMS 2009/05/16 CHECK: UOKK 2009/05/17 APPR: JMACNEIL 2009/05/17	QUALITY SYMBOLS ▽=0 ▽=0	GENERAL TOLERANCES (UNLESS SPECIFIED)		DIMENSION STYLE		SCALE	DESIGN UNITS	THIRD ANGLE PROJECTION	
4	XX	SCREW, #6-32X.25, PAN, PH/SL (-49 OPT)	BRASS	NICKEL PLATE			4 PLACES ±.005 ±.005	mm	INCH	MM/IN	2:1	INCH	DRAWN BY R. KEMP DATE 2003/05/16 CHECKED BY P. WALTZ DATE 2003/05/22 APPROVED BY P. WALTZ DATE 2003/05/22 MATERIAL NO. SEE SHT. 2 MOLEX INCORPORATED DOCUMENT NO. SD-38704-001 SHEET NO. 1 OF 2	
3	XX	SCREW, #6-32X.25, PAN, PH/SL (STD)	STEEL	ZN, CLEAR CHROMATE			3 PLACES ±.013 ±.01	DRAFT WHERE APPLICABLE MUST REMAIN WITHIN DIMENSIONS		SEE SHT. 2		MOLEX INCORPORATED		
2	XX	TERMINAL, PC	BRASS	TIN PLATE			2 PLACES ±0.3 ±.01							
1	1	INSULATOR, SR BTS PC CS 2 MO C	POLYESTER (PBT)	BLACK			1 PLACE ±0.3 ±.01							
ITEM	QTY.	DESCRIPTION	MATERIAL	FINISH										

NO. OF CIRCUITS	DIM. "A"		DIM. "B"		ASSEMBLY MATERIAL NO. (STANDARD)	ASSEMBLY MATERIAL NO. (-49 OPT)	ASSEMBLY MATERIAL NO. (-50 OPT)
	mm	in	mm	in			
02	18.5	0.73	8.26	.325	387044102	387044502	387044902
03	26.8	1.06	16.51	.650	387044103	387044503	387044903
04	35.1	1.38	24.77	.975	387044104	387044504	387044904
05	43.3	1.70	33.02	1.300	387044105	387044505	387044905
06	51.5	2.03	41.28	1.625	387044106	387044506	387044906
07	59.8	2.35	49.53	1.950	387044107	387044507	387044907
08	68.0	2.68	57.79	2.275	387044108	387044508	387044908
09	76.3	3.00	66.04	2.600	387044109	387044509	387044909
10	84.6	3.33	74.30	2.925	387044110	387044510	387044910
11	92.8	3.65	82.55	3.250	387044111	387044511	387044911
12	101.1	3.98	90.81	3.575	387044112	387044512	387044912
13	109.3	4.30	99.06	3.900	387044113	387044513	387044913
14	117.6	4.63	107.32	4.225	387044114	387044514	387044914
15	125.8	4.95	115.57	4.550	387044115	387044515	387044915
16	134.1	5.28	123.83	4.875	387044116	387044516	387044916

SEE SHEET ONE EC NO: WNA2009-0702 DRAWN: ENCLAS 2009/05/26 CHECK: URBK 2009/05/27 APPR: JMACNEIL 2009/05/27 REV	QUALITY SYMBOLS	GENERAL TOLERANCES (UNLESS SPECIFIED)	DIMENSION STYLE	SCALE	DESIGN UNITS	THIRD ANGLE PROJECTION
	$\nabla=0$ $\nabla=0$	mm INCH	MM/IN	1:1	INCH	
	4 PLACES ± --- ± --- 3 PLACES ± --- ± .005 2 PLACES ± 0.13 ± .01 1 PLACE ± 0.3 ± --- ANGULAR ± 2°	DRAWN BY R. KEMP DATE 2003/05/16 CHECKED BY P. WALTZ DATE 2003/05/22 APPROVED BY P. WALTZ DATE 2003/05/22 MATERIAL NO. SEE CHART DRAFT WHERE APPLICABLE MUST REMAIN WITHIN DIMENSIONS	DATE 2003/05/16 DATE 2003/05/22 DATE 2003/05/22 DOCUMENT NO. SD-38704-001 SHEET NO. 2 OF 2	TITLE 8.26MM [.325] SR BTS, CS PC, NO MTG. ENDS MOLEX INCORPORATED		
	THIS DRAWING CONTAINS INFORMATION THAT IS PROPRIETARY TO MOLEX INCORPORATED AND SHOULD NOT BE USED WITHOUT WRITTEN PERMISSION					