



Distributor of Molex Connector Corporation: Excellent Integrated System Limited
Datasheet of 0387045716 - Connector Barrier Block Strip 16 Circuit 0.325" (8.26mm)

Contact us: sales@integrated-circuit.com Website: www.integrated-circuit.com

Excellent Integrated System Limited

Stocking Distributor

Click to view price, real time Inventory, Delivery & Lifecycle Information:

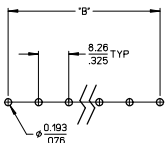
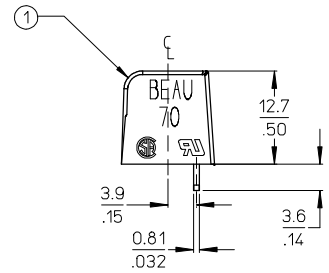
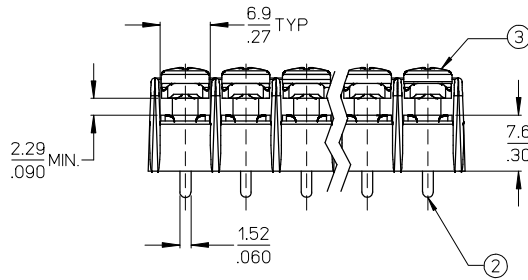
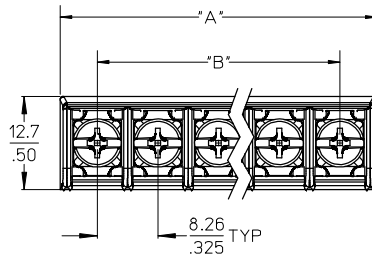
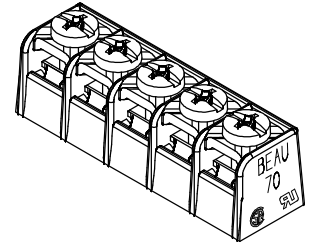
[Molex Connector Corporation](#)
[0387045716](#)

For any questions, you can email us directly:

sales@integrated-circuit.com

10 9 8 7 6 5 4 3 2 38704

NUMBER OF CIRCUITS "XX"	DM "A"	DM "B"	ASSEMBLY MATERIAL NO.
02	18.5 (473)	8.26 (325)	387045702
03	26.9 (106)	16.51 (650)	387045703
04	35.1 (138)	24.77 (975)	387045704
05	43.2 (170)	33.02 (1300)	387045705
06	51.2 (203)	41.28 (1625)	387045706
07	59.7 (235)	49.53 (1950)	387045707
08	68.1 (268)	57.79 (2275)	387045708
09	76.2 (300)	66.04 (2600)	387045709
10	84.6 (333)	74.30 (2925)	387045710
11	92.7 (365)	82.55 (3250)	387045711
12	101.0 (398)	90.81 (3575)	387045712
13	109.2 (430)	99.06 (3900)	387045713
14	117.5 (463)	107.32 (4225)	387045714
15	125.7 (495)	115.57 (4550)	387045715
16	134.0 (528)	123.83 (4875)	387045716



PTH PATTERN SCALE 1:1

NOTES:

1. MATERIAL: SEE TABLE
2. FINISHES: SEE TABLE
3. PRODUCT SPECIFICATION: NOT REQUIRED
4. "XX" REFERS TO THE QUANTITY OF CIRCUITS.
5. ROHS COMPLIANT.

ITEM	QTY.	DESCRIPTION	MATERIAL	FINISH
3	5	SCREW, #6-32X.250, PAN PHSL W/SO. WASHER, WRD	STEEL	ZN, CLEAR CHROMATE
2	5	TERMINAL, PC	BRASS	TIN PLATE
1	1	INSULATOR, SR, CS	POLYESTER (PBT)	BLACK

INITIAL RELEASE EC NO: WNA2008-0402 DPN: ENCINAS 2008/07/28 CHKD: YORK 2008/08/15 APPR: MACNEIL 2008/08/15	QUALITY SYMBOLS ▽=0 ▽=0	GENERAL TOLERANCES (UNLESS SPECIFIED)		DIMENSION STYLE MM/IN	SCALE 2:1	DESIGN UNITS INCH	THIRD ANGLE PROJECTION
		4 PLACES ± --- ± --- 3 PLACES ± --- ± .005 2 PLACES ± 0.13 ± .01 1 PLACE ± 0.3 ± --- ANGULAR ± 2 °	DRAWN BY J. ENCINAS	DATE 2008/07/18	TITLE 8.26MM [.325] SR BTS, CS PC NO MTG. ENDS WIRE READY SCREWS		
A	REV	DRAFT WHERE APPLICABLE MUST REMAIN WITHIN DIMENSIONS		APPROVED BY J. MACNEIL	DATE 2008/07/21	MOLEX INCORPORATED	
		SEE CHART		MATERIAL NO.	DOCUMENT NO. SD-38704-004	SHEET NO. 1 OF 1	

1b_frame_B_P_ME_T Rev. E 2006/04/15 9 8 7 6 5 4 3 2 1

THIS DRAWING CONTAINS INFORMATION THAT IS PROPRIETARY TO MOLEX INCORPORATED AND SHOULD NOT BE USED WITHOUT WRITTEN PERMISSION