



**Distributor of Molex Connector Corporation: Excellent Integrated System Limited**

Datasheet of 0387200308 - Connector Barrier Block Strip 8 Circuit 0.375" (9.53mm)

Contact us: [sales@integrated-circuit.com](mailto:sales@integrated-circuit.com) Website: [www.integrated-circuit.com](http://www.integrated-circuit.com)

---

## **Excellent Integrated System Limited**

Stocking Distributor

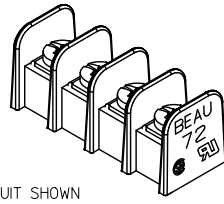
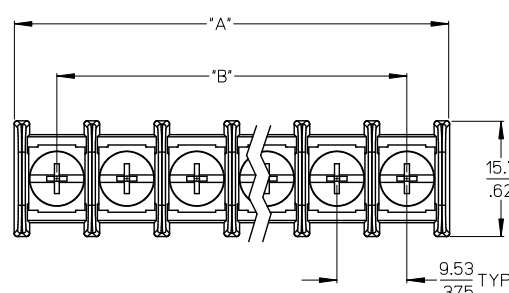
Click to view price, real time Inventory, Delivery & Lifecycle Information:

[Molex Connector Corporation](#)  
[0387200308](#)

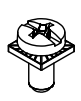
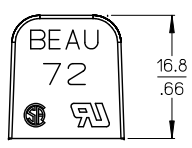
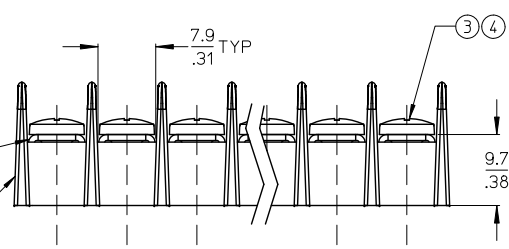
For any questions, you can email us directly:

[sales@integrated-circuit.com](mailto:sales@integrated-circuit.com)

| NO. OF CIRCUITS | DIM. "A" |      | DIM. "B" |       | ASSEMBLY MATERIAL NO. (STD. -C) | ASSEMBLY MATERIAL NO. (-C-50 OPT) |
|-----------------|----------|------|----------|-------|---------------------------------|-----------------------------------|
|                 | mm       | in   | mm       | in    |                                 |                                   |
| 02              | 21.1     | 0.83 | 9.53     | 0.375 | 387200302                       | 387202302                         |
| 03              | 30.6     | 1.21 | 19.05    | 0.750 | 387200303                       | 387202303                         |
| 04              | 40.2     | 1.58 | 28.58    | 1.125 | 387200304                       | 387202304                         |
| 05              | 49.7     | 1.96 | 38.10    | 1.500 | 387200305                       | 387202305                         |
| 06              | 59.2     | 2.33 | 47.63    | 1.875 | 387200306                       | 387202306                         |
| 07              | 68.8     | 2.71 | 57.15    | 2.250 | 387200307                       | 387202307                         |
| 08              | 78.3     | 3.08 | 66.68    | 2.625 | 387200308                       | 387202308                         |
| 09              | 87.8     | 3.46 | 76.20    | 3.000 | 387200309                       | 387202309                         |
| 10              | 97.3     | 3.83 | 85.73    | 3.375 | 387200310                       | 387202310                         |
| 11              | 106.8    | 4.21 | 95.25    | 3.750 | 387200311                       | 387202311                         |
| 12              | 116.4    | 4.58 | 104.78   | 4.125 | 387200312                       | 387202312                         |
| 13              | 125.9    | 4.96 | 114.30   | 4.500 | 387200313                       | 387202313                         |
| 14              | 135.4    | 5.33 | 123.83   | 4.875 | 387200314                       | 387202314                         |
| 15              | 145.0    | 5.71 | 133.35   | 5.250 | 387200315                       | 387202315                         |
| 16              | 154.5    | 6.08 | 142.88   | 5.625 | 387200316                       | 387202316                         |
| 17              | 164.0    | 6.46 | 152.40   | 6.000 | 387200317                       | 387202317                         |
| 18              | 173.5    | 6.83 | 161.93   | 6.375 | 387200318                       | 387202318                         |
| 19              | 183.1    | 7.21 | 171.45   | 6.750 | 387200319                       | 387202319                         |
| 20              | 192.6    | 7.58 | 180.99   | 7.125 | 387200320                       | 387202320                         |
| 21              | 202.1    | 7.96 | 190.50   | 7.500 | 387200321                       | 387202321                         |
| 22              | 211.6    | 8.33 | 200.03   | 7.875 | 387200322                       | 387202322                         |
| 23              | 221.1    | 8.71 | 209.55   | 8.250 | 387200323                       | 387202323                         |
| 24              | 230.7    | 9.08 | 219.08   | 8.625 | 387200324                       | 387202324                         |
| 25              | 240.2    | 9.46 | 228.60   | 9.000 | 387200325                       | 387202325                         |
| 26              | 249.7    | 9.83 | 238.13   | 9.375 | 387200326                       | 387202326                         |



4 CIRCUIT SHOWN  
SCALE 1.5:1



(B) REF. -50 OPT. SCREW (ITEM 4)  
(WHERE APPLICABLE)

- NOTES:
1. MATERIAL: SEE TABLE.
  2. FINISHES: SEE TABLE.
  3. PRODUCT SPECIFICATION: NOT REQUIRED.
  4. ROHS COMPLIANT.

| ITEM | QTY. | DESCRIPTION                                     | MATERIAL         | FINISH             |
|------|------|---|------------------|--------------------|
| 4    | XX   | SCREW W/WASHER, #6-32X.250 PAN, PH/SL (-50 OPT) | STEEL            | ZN, CLEAR CHROMATE |
| 3    | XX   | SCREW, #6-32X.250 BHD PH/SL (STANDARD)          | STEEL            | ZN, CLEAR CHROMATE |
| 2    | XX   | TERMINAL, CB                                    | BRASS            | TIN PLATE          |
| 1    | 1    | SR BTS INSULATOR, CB MO C                       | POLYESTER (PBTT) | BLACK              |

|   |                               |   |                        |                              |  |                      |                           |
|---|-------------------------------|---|------------------------|------------------------------|--|----------------------|---------------------------|
| ADD -C-50 MAT. NUMB.<br>EC NO: WNA2012-0001<br>DRAWN: JENCLINS 2011/07/04<br>CHKD: JMACNEIL 2011/09/07<br>APPR: JMACNEIL      | QUALITY SYMBOLS<br>▽=0<br>▽=0 | GENERAL TOLERANCES (UNLESS SPECIFIED)   |                        | DIMENSION STYLE<br>MM/IN     | SCALE<br>2:1   | DESIGN UNITS<br>INCH | THIRD ANGLE<br>PROJECTION |
|   |                               | 4 PLACES ± .--- ± .---<br>3 PLACES ± .--- ± .005<br>2 PLACES ± 0.13 ± .01<br>1 PLACE ± 0.3 ± .---<br>ANGULAR ± 2° | DRAWN BY<br>J. ENCINAS | DATE<br>2009/08/17           | TITLE<br>9.53MM [.375"] SR BTS<br>CB ASSY., NO MTG. ENDS |                      |                           |
| DRAFT WHERE APPLICABLE<br>MUST REMAIN<br>WITHIN DIMENSIONS  |                               | APPROVED BY<br>J. MACNEIL   |                        | DATE<br>2009/08/17           | MOLEX INCORPORATED                                       |                      |                           |
|   |                               | MATERIAL NO.<br>SEE CHART   |                        | DOCUMENT NO.<br>SD-38720-013 |  | SHEET NO.<br>1 OF 1  |                           |
| THIS DRAWING CONTAINS INFORMATION THAT IS PROPRIETARY TO MOLEX INCORPORATED AND SHOULD NOT BE USED WITHOUT WRITTEN PERMISSION |                               |   |                        |                              |  |                      |                           |