



**Distributor of Molex Connector Corporation: Excellent Integrated System Limited**  
Datasheet of 0387351119 - Connector Barrier Block Strip 19 Circuit 0.438" (11.12mm)

Contact us: [sales@integrated-circuit.com](mailto:sales@integrated-circuit.com) Website: [www.integrated-circuit.com](http://www.integrated-circuit.com)

---

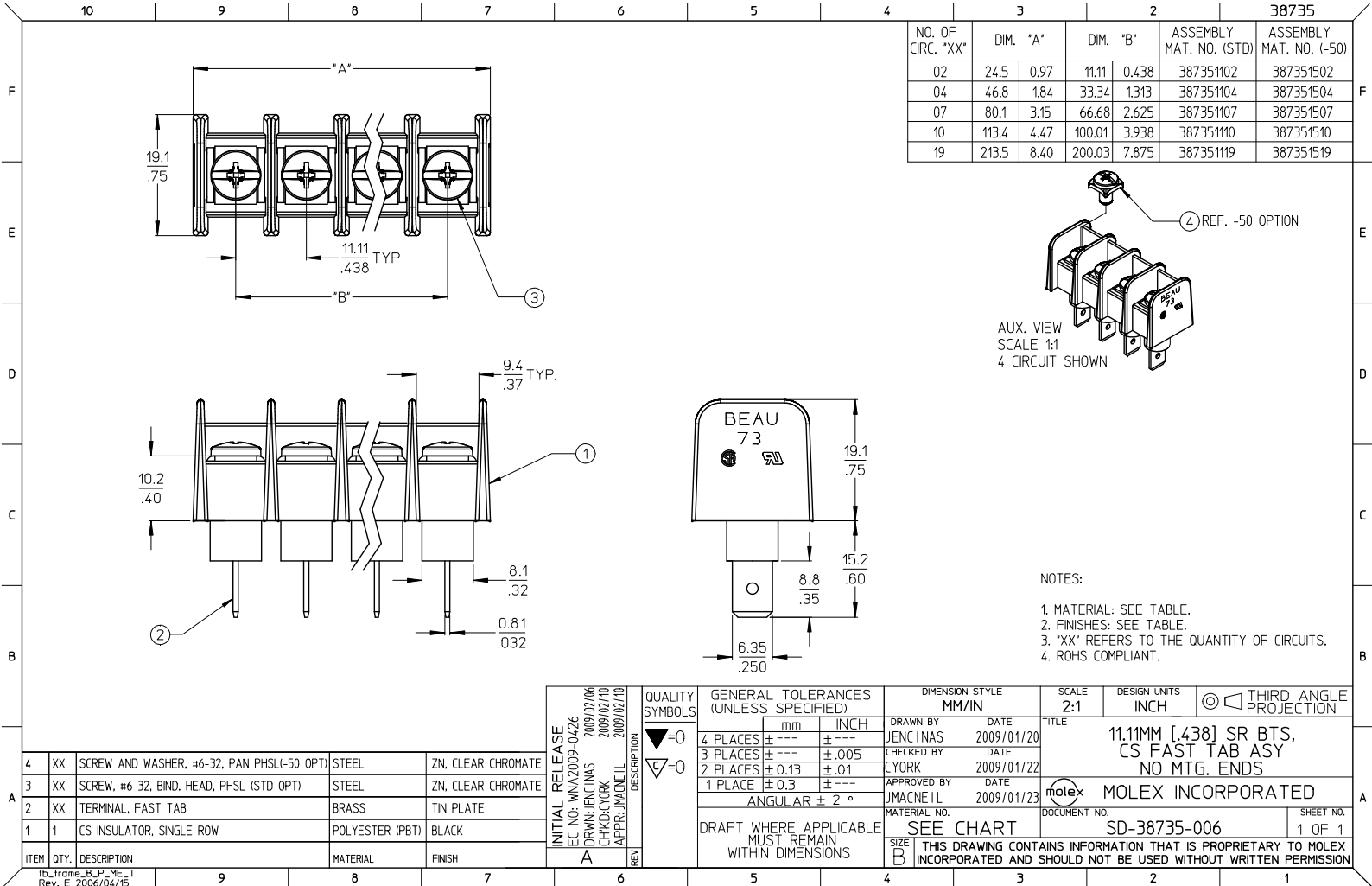
## **Excellent Integrated System Limited**

Stocking Distributor

Click to view price, real time Inventory, Delivery & Lifecycle Information:

[Molex Connector Corporation](#)  
[0387351119](#)

For any questions, you can email us directly:  
[sales@integrated-circuit.com](mailto:sales@integrated-circuit.com)



NO. OF CIRC. "XX"	DIM. "A"	DIM. "B"	ASSEMBLY MAT. NO. (STD)	ASSEMBLY MAT. NO. (-50)		
02	24.5	0.97	11.11	0.438	387351102	387351502
04	46.8	1.84	33.34	1.313	387351104	387351504
07	80.1	3.15	66.68	2.625	387351107	387351507
10	113.4	4.47	100.01	3.938	387351110	387351510
19	213.5	8.40	200.03	7.875	387351119	387351519

ITEM	QTY.	DESCRIPTION	MATERIAL	FINISH
4	XX	SCREW AND WASHER, #6-32, PAN PHSL(-50 OPT)	STEEL	ZN, CLEAR CHROMATE
3	XX	SCREW, #6-32, BIND. HEAD, PHSL (STD OPT)	STEEL	ZN, CLEAR CHROMATE
2	XX	TERMINAL, FAST TAB	BRASS	TIN PLATE
1	1	CS INSULATOR, SINGLE ROW	POLYESTER (PBT)	BLACK

QUALITY SYMBOLS ▽=0 ▽=0	GENERAL TOLERANCES (UNLESS SPECIFIED) mm INCH 4 PLACES ± .--- ± .--- 3 PLACES ± .--- ± .005 2 PLACES ± 0.13 ± .01 1 PLACE ± 0.3 ± .--- ANGULAR ± 2°	DIMENSION STYLE MM/IN DRAWN BY JENCINAS DATE 2009/01/20 CHECKED BY CYORK DATE 2009/01/22 APPROVED BY JMACNEIL DATE 2009/01/23	SCALE 2:1 DESIGN UNITS INCH THIRD ANGLE PROJECTION
	DRAFT WHERE APPLICABLE MUST REMAIN WITHIN DIMENSIONS	MATERIAL NO. SEE CHART SIZE B THIS DRAWING CONTAINS INFORMATION THAT IS PROPRIETARY TO MOLEX INCORPORATED AND SHOULD NOT BE USED WITHOUT WRITTEN PERMISSION	TITLE 11.11MM [.438] SR BTS, CS FAST TAB ASY NO MTG. ENDS MOLEX INCORPORATED DOCUMENT NO. SD-38735-006 SHEET NO. 1 OF 1