

Excellent Integrated System Limited

Stocking Distributor

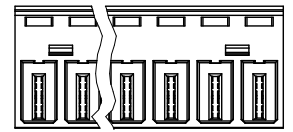
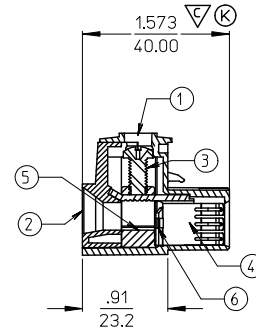
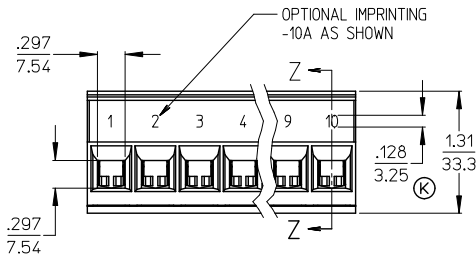
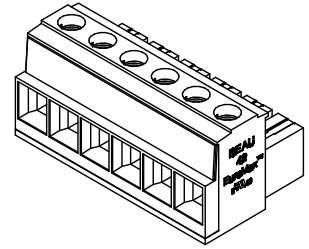
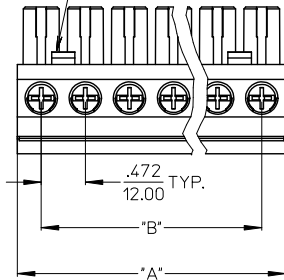
Click to view price, real time Inventory, Delivery & Lifecycle Information:

[Molex Connector Corporation](#)
[0394210002](#)

For any questions, you can email us directly:
sales@integrated-circuit.com

LENGTH TABLE				
NO. CIRCUITS	"B"	"A"	MATERIAL NO. (STANDARD)	MATERIAL NO. (-10A OPT.)
02	.472/12.00	.98/25.0	39421-0002	39421-1002
03	.945/24.00	1.46/37.0	39421-0003	39421-1003
04	1.417/36.00	1.93/49.0	39421-0004	39421-1004
05	1.890/48.00	2.40/61.0	39421-0005	39421-1005
06	2.362/60.00	2.87/73.0	39421-0006	39421-1006
07	2.835/72.00	3.35/85.0	39421-0007	39421-1007
08	3.307/84.00	3.82/97.0	39421-0008	39421-1008
09	3.780/96.00	4.29/109.0	39421-0009	39421-1009
10	4.252/108.00	4.76/121.0	39421-0010	39421-1010

2 AND 3 CIRCUIT PARTS HAVE ONE LATCH DETAIL POSITIONED ON THIS END.



- NOTES:
1. MATERIAL: SEE TABLE
 2. FINISHES: SEE TABLE
 3. MATES WITH: 3942500XX HEADER
 4. XX EQUALS NUMBER OF CIRCUITS
 5. ROHS COMPLIANT BY EXEMPTION *

ITEM	QTY.	DESCRIPTION	MATERIAL	FINISH
6	XX	BACK PLATE	PHOS. BRONZE	TIN
5	XX	PRESSURE CLAMP *	BRASS	NICKEL
4	XX	TERMINAL	COPPER ALLOY	TIN
3	XX	SCREW, M5 PAN HEAD, POZI-SLOT	S.S.	TIN
2	1	MOLDING, COVER	PBT	BLACK
1	1	MOLDING, BODY	PBT	BLACK

REV	DESCRIPTION	DATE	BY	CHKD.	APPR.
1	UPDATE DIM., ADD CTO. DIM.	2013/06/25	EC	NO: JGZ013-1881	
2		2013/08/17	DRWNS: ENCLMS		
3		2013/09/17	CHKD: MACNEIL		
4		2013/09/24	APPR: MACNEIL		

QUALITY SYMBOLS
▽=0
▽=1

GENERAL TOLERANCES (UNLESS SPECIFIED)	
	INCH
4 PLACES	± .005
3 PLACES	± .005
2 PLACES	± .01
1 PLACE	± .03
ANGULAR ± 2°	

DIMENSION STYLE	SCALE	DESIGN UNITS	THIRD ANGLE PROJECTION
IN/MM	4:1	INCH	
DRAWN BY: RKEMP		DATE: 03/07/21	
CHECKED BY: PWALTZ		DATE: 03/08/05	
APPROVED BY: G. ROBERTSON		DATE: 03/08/05	
MATERIAL NO. SEE CHART		DOCUMENT NO. SD-39421-001	
TITLE: PLUG, 12MM, 85A, 600V #10-#3 AWG		SHEET NO. 1 OF 1	