

Excellent Integrated System Limited

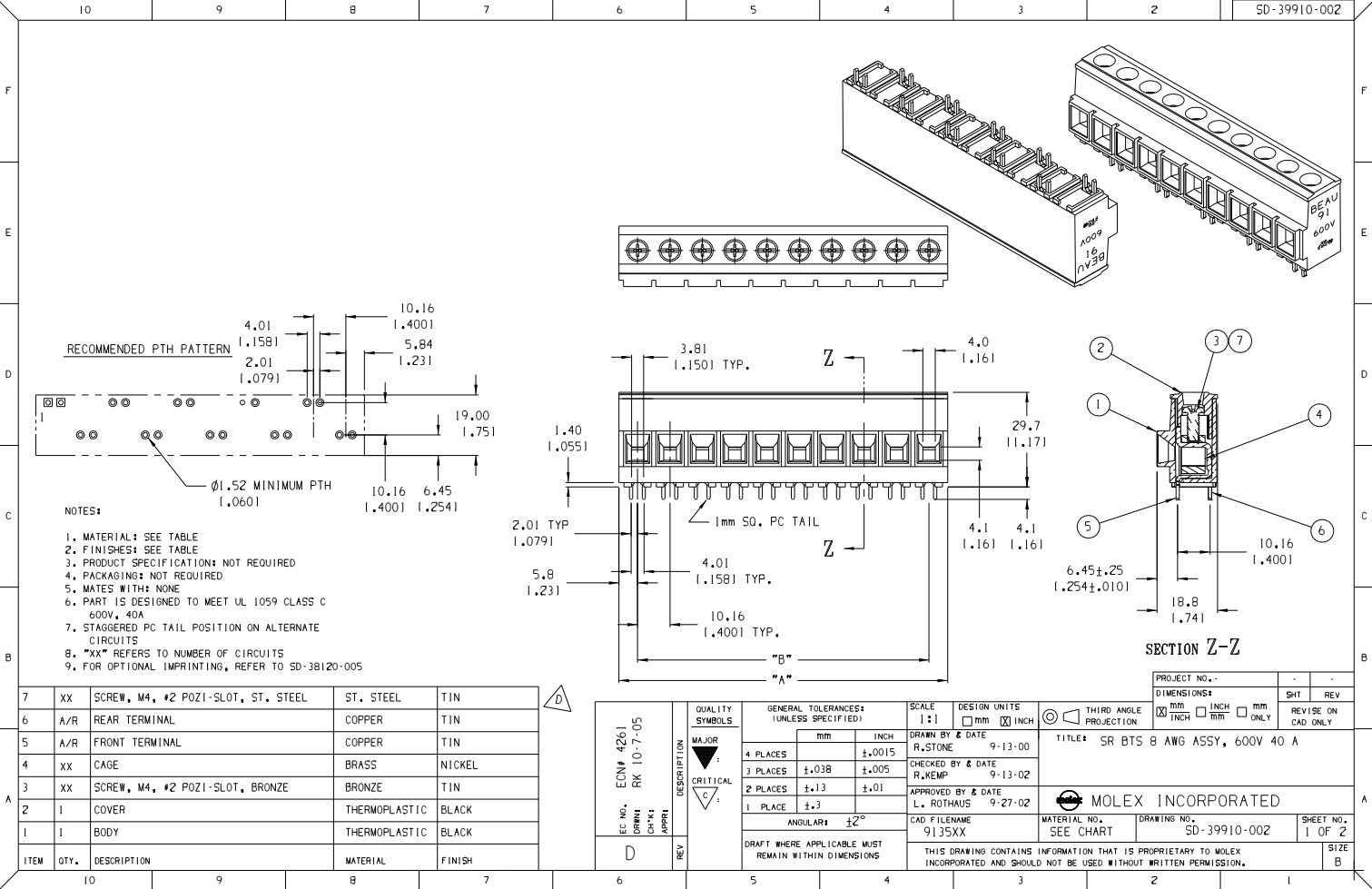
Stocking Distributor

Click to view price, real time Inventory, Delivery & Lifecycle Information:

[Molex Connector Corporation](#)
[0399100606](#)

For any questions, you can email us directly:

sales@integrated-circuit.com



RECOMMENDED PTH PATTERN

NOTES:

1. MATERIAL: SEE TABLE
2. FINISHES: SEE TABLE
3. PRODUCT SPECIFICATION: NOT REQUIRED
4. PACKAGING: NOT REQUIRED
5. MATES WITH: NONE
6. PART IS DESIGNED TO MEET UL 1059 CLASS C 600V, 40A
7. STAGGERED PC TAIL POSITION ON ALTERNATE CIRCUITS
8. "XX" REFERS TO NUMBER OF CIRCUITS
9. FOR OPTIONAL IMPRINTING, REFER TO SD-38120-005

ITEM	QTY.	DESCRIPTION	MATERIAL	FINISH
7	XX	SCREW, M4, #2 POZI-SLOT, ST. STEEL	ST. STEEL	TIN
6	A/R	REAR TERMINAL	COPPER	TIN
5	A/R	FRONT TERMINAL	COPPER	TIN
4	XX	CAGE	BRASS	NICKEL
3	XX	SCREW, M4, #2 POZI-SLOT, BRONZE	BRONZE	TIN
2	I	COVER	THERMOPLASTIC	BLACK
1	I	BODY	THERMOPLASTIC	BLACK

ECN# 4261 DRAWN RK 10-7-05 CHK'S APPROV	DESCRIPTION	QUALITY SYMBOLS
D	REV	MAJOR MINOR CRITICAL

GENERAL TOLERANCES: (UNLESS SPECIFIED)		SCALE 1:1	DESIGN UNITS <input type="checkbox"/> mm <input checked="" type="checkbox"/> INCH	THIRD ANGLE PROJECTION	PROJECT NO. -	SHT -	REV -
4 PLACES	±.0015	DRAWN BY & DATE R. STONE 9-13-00	TITLE: SR BTS 8 AWG ASSY, 600V 40 A		DIMENSIONS: <input checked="" type="checkbox"/> mm <input type="checkbox"/> INCH <input type="checkbox"/> mm ONLY		
3 PLACES	±.005	CHECKED BY & DATE R. KEMP 9-13-02	APPROVED BY & DATE L. ROTHHAUS 9-27-02		MATERIAL NO. SEE CHART		
2 PLACES	±.01	CAD FILE NAME 9135XX		DRAWING NO. SD-39910-002		SHEET NO. 1 OF 2	
1 PLACE	±.3	DRAFT WHERE APPLICABLE MUST REMAIN WITHIN DIMENSIONS		THIS DRAWING CONTAINS INFORMATION THAT IS PROPRIETARY TO MOLEX INCORPORATED AND SHOULD NOT BE USED WITHOUT WRITTEN PERMISSION.		SIZE B	
ANGULAR: ±2°		CAD FILE NAME 9135XX		MATERIAL NO. SEE CHART		DRAWING NO. SD-39910-002	



