

Excellent Integrated System Limited

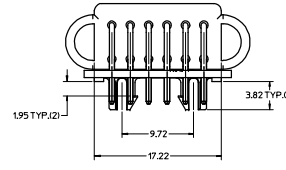
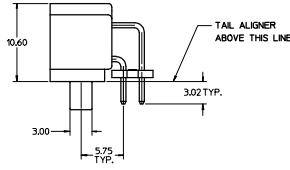
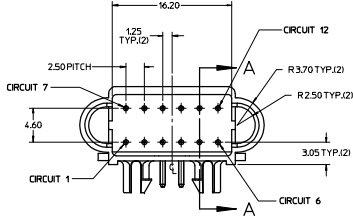
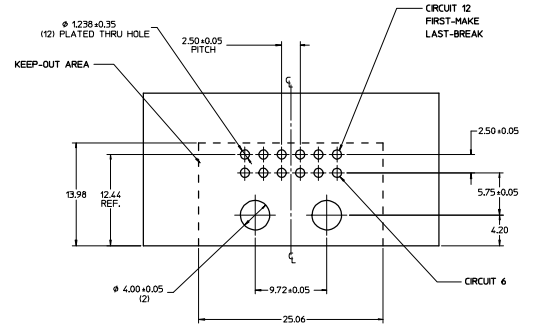
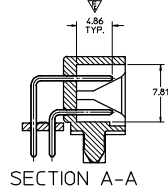
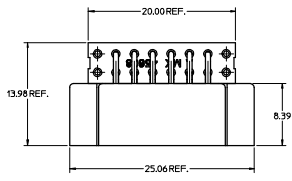
Stocking Distributor

Click to view price, real time Inventory, Delivery & Lifecycle Information:

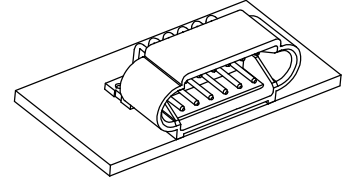
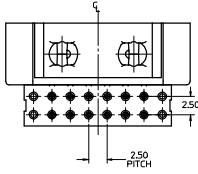
[Molex Connector Corporation](#)
[0456080012](#)

For any questions, you can email us directly:

sales@integrated-circuit.com



PC BOARD LAYOUT
COMPONENT SIDE
PCB THICKNESS 1.67mm



- NOTES:
1. HOUSING MATERIAL: HIGH-TEMP THERMOPLASTIC, 94V-0, (COLOR: BLACK)
2. TAIL ALIGNER: HIGH-TEMP THERMOPLASTIC (COLOR: OPTIONAL)
3. PIN MATERIAL: 0.70mm DIA. BRASS
4. PIN PLATING: 2.50um TIN OVER 125um NICKEL
5. PRODUCT SPECIFICATION: PS-45579-012
6. PACKAGING: TRAY

HARD OPTICAL COLOR EC NO. 045608-557 DRAWN/DROSCA 2008/01/15 CHKC/DROSCA 2008/01/15 APPR/LOMRELL 2008/01/16 REV	QUALITY SYMBOLS	GENERAL TOLERANCES (UNLESS SPECIFIED)	DIMENSION STYLE	SCALE	DESIGN UNITS	THIRD ANGLE PROJECTION
	$\nabla=0$ $\nabla=1$	4 PLACES ±0.15 3 PLACES ±0.13 2 PLACES ±0.13 1 PLACE ±0.25 ANGULAR ±1/2°	MM ONLY	4:1	METRIC	
	DRAWN BY: DROSCA CHECKED BY: DROSCA APPROVED BY: JCOMERC I	DATE: 09/06/2006 DATE: 09/06/2006 DATE: 09/06/2006				
	MATERIAL NO: 45608-0012 SIZE: D THIS DRAWING CONTAINS INFORMATION THAT IS PROPRIETARY TO MOLEX INCORPORATED AND SHOULD NOT BE USED WITHOUT WRITTEN PERMISSION		DOCUMENT NO: SD-45608-012 SHEET NO: 1 OF 1		MOLEX INCORPORATED	