

Excellent Integrated System Limited

Stocking Distributor

Click to view price, real time Inventory, Delivery & Lifecycle Information:

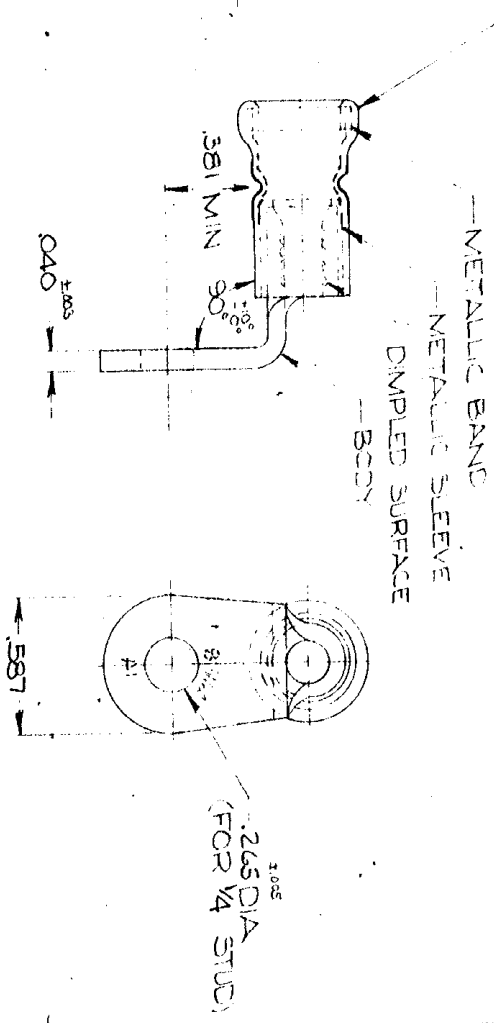
[TE Connectivity AMP Connectors
323869](#)

For any questions, you can email us directly:
sales@integrated-circuit.com



DRAWING MADE IN AMERICAN PROJECTION
 © 1984 BY AMP INCORPORATED. ALL RIGHTS RESERVED. AMP PRODUCTS COVERED BY PATENTS AND/OR PATENTS PENDING.

REVISIONS		
LTR	DESCRIPTION	DATE
A	REBRAN 1 REVISED P-5563	1-5-70
B	REV PER P-8347	4/9/79
C	REV. G-4680	5-5-88



FOR .298 MAX WIRE INS DIA

QTY: 1	DESCRIPTION: WIRE TERMINAL	PART NO: 323869	CONTRACT NO: #	DR: J. Williams	DATE: 11-11-69						
UNLESS OTHERWISE SPECIFIED DIMENSIONS ARE IN INCHES											
TOLERANCES ON ANGLES ±.50											
MATERIAL: SEE TABLE											
APPD: J. Williams											
REVISION: 1-7-70											
OTHER APPD:											
BODY: COPPER (QA-G-576)			INSULATION: PVC COLOR: RED								
TIN PL (MIL-T-1072)			METALLIC SLEEVE: COPPER (QA-G-576)								
METALLIC BAND: (ASTM A109)			METALLIC BAND & FINISH								
<table border="1"> <tr> <td>NAME: AMP</td> <td>WIRE TERMINAL</td> </tr> <tr> <td>AMP INCORPORATED</td> <td>AMP L-BOND-RING TONGUE-BENT 90°</td> </tr> <tr> <td>HARRISBURG, PENNSYLVANIA</td> <td>WIRE SIZE: 8</td> </tr> </table>						NAME: AMP	WIRE TERMINAL	AMP INCORPORATED	AMP L-BOND-RING TONGUE-BENT 90°	HARRISBURG, PENNSYLVANIA	WIRE SIZE: 8
NAME: AMP	WIRE TERMINAL										
AMP INCORPORATED	AMP L-BOND-RING TONGUE-BENT 90°										
HARRISBURG, PENNSYLVANIA	WIRE SIZE: 8										
SCALE: A		CODE IDENT NO: 00779	NUMBER: 323869		SHEET: 1 OF 1						

AMP 1469-1 REV 15 57