



Excellent Integrated System Limited

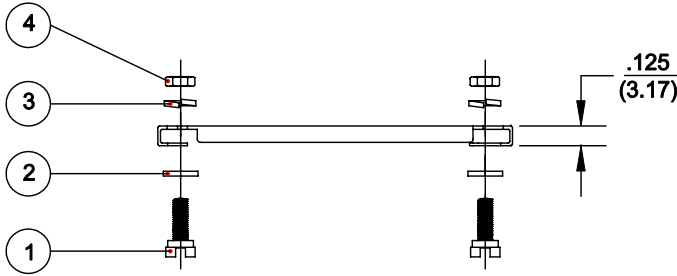
Stocking Distributor

Click to view price, real time Inventory, Delivery & Lifecycle Information:

[NorComp](#)
[160-025-004-031](#)

For any questions, you can email us directly:
sales@integrated-circuit.com

DESCRIPTION: 25 POSITION SLIDE LOCK



SCREW

ITEM NO.
1

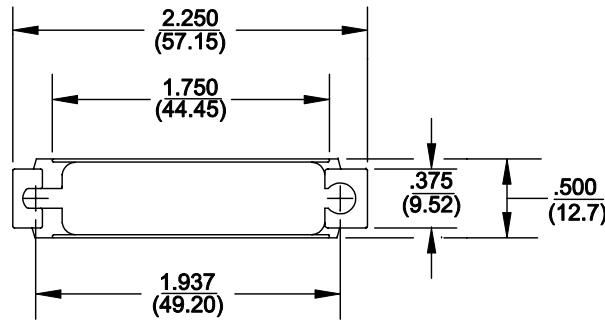
FLAT & SPLIT WASHERS

ITEM NO.	ID	OD	WIDTH
2	.120	.220	.031
3	.120	.200	.031

HEX NUT


ITEM NO.	ID	OD	WIDTH
4	4-40	.187	.062

- KIT INCLUDES:**
 (1) SLIDE LOCK BAR
 (2) 4-40 POSTS
 (2) FLAT WASHERS
 (2) LOCK WASHERS
 (2) 4-40 NUTS



MATERIALS:

SLIDE LOCK: STAINLESS STEEL
 WASHER, LOCK WASHER, NUT: STEEL
 YELLOW CHROMATE PLATING

 NorComp	THESE DRAWINGS AND SPECIFICATIONS ARE THE PROPERTY OF NorComp AND SHALL NOT BE REPRODUCED, COPIED OR USED AS THE BASIS FOR THE MANUFACTURE OF SALE OF APPARATUS WITHOUT WRITTEN PERMISSION.		DRAWN: WAYNE ROBBINS	DATE: 9-16-98
			CHECKED:	DATE:
		SCALE: 1:1	SHEET 1 OF 1	REV 1
		DWG NO. 160-025-004-031		