



Excellent Integrated System Limited

Stocking Distributor

Click to view price, real time Inventory, Delivery & Lifecycle Information:

[On-Shore Technology, Inc.](#)
[BU060Z-178-HT](#)

For any questions, you can email us directly:
sales@integrated-circuit.com

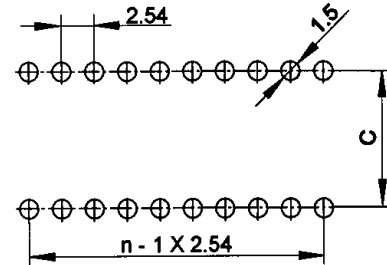
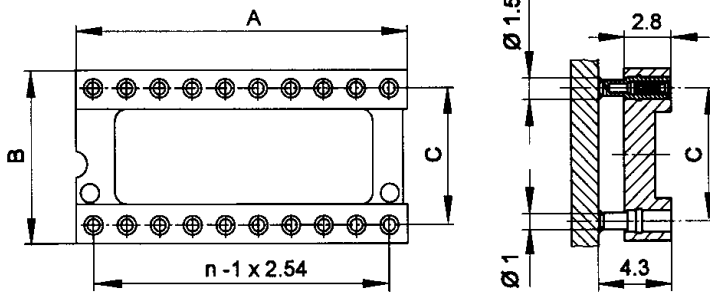
Ratings:

Current 1A
 Voltage 10 mV to 60V
 Contact resistance $\leq 7m\Omega$
 Insulation resistance $> 10^{12}\Omega$
 Withstand voltage 1000V (RMS)

Materials:

Plastic PBT Glass Filled, UL94V-0
 Sleeve Turned Brass, Flash Copper, Nickel 2-3 μ m, Tin 5 μ m
 Clip Beryllium- copper, Nickel 2-3 μ m, Gold 0.25 μ m
 Temperature range -55°C/+125°C, 260°C for 5 sec. / 215°C for 2 minutes
 Insertion depth 2.4mm min. - 3.8mm max.
 Insertion diameter 0.40mm min. - 0.56mm max.
 Mechanical Life 100 Cycles

Positions	A	B	C
04	5.08	10.08	7.62
06	7.62	10.08	7.62
08	10.16	10.08	7.62
10	12.70	10.08	7.62
14	17.78	10.08	7.62
16	20.32	10.08	7.62
18	22.86	10.08	7.62
20	25.40	10.08	7.62
22	27.86	12.62	10.16
22(1)	27.94	10.08	7.62
24	30.48	17.70	15.24
24(1)	30.48	10.08	7.62
28	35.56	17.70	15.24
28(1)	35.56	10.08	7.62
32	40.64	17.70	15.24
36	45.75	17.70	15.24
40	50.80	17.70	15.24
48	60.96	17.70	15.24
50	63.50	25.32	22.86
64	81.28	25.32	22.86



Recommended PCB Layout