

Excellent Integrated System Limited

Stocking Distributor

Click to view price, real time Inventory, Delivery & Lifecycle Information:

[Bel Fuse Inc.](#)
[105-0773-001](#)

For any questions, you can email us directly:
sales@integrated-circuit.com

.080 (2.00) Insulated Standard: Small Handle (Solder or Crimp)

SPECIFICATIONS

Contact: Brass per QQ-B-626D

Finish: Nickel

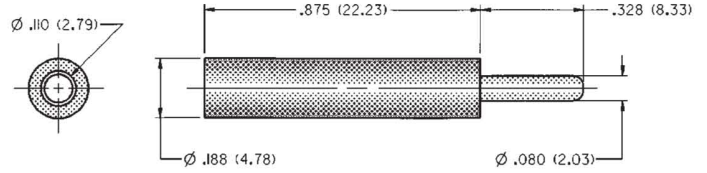
Insulated Handle: Nylon 6/6 per ASTM D4066

RATINGS

Current: 10 amps

Breakdown Voltage: 3500 VRMS minimum[†]

Contact Resistance: 0.010 ohms maximum



NICKEL PLATING	
SOLDER TYPE UP TO 16 GAUGE	CRIMP TYPE 16 GAUGE
PART NO.	COLOR
105-0771-001	White
105-0772-001	Red
105-0773-001	Black

For Standard Test Jack: .080 (2.00) Diameter

FEATURES:

- Solder or crimp type connection
- Accepts wire sizes up to 16 gauge
- Nylon UL approved for self extinguishing
- Designed for use with horizontal and vertical test jacks only

See page xxx for crimp tool.

[†]Avoid user injury due to misapplication. See safety advisory definitions inside front cover.

