

Excellent Integrated System Limited

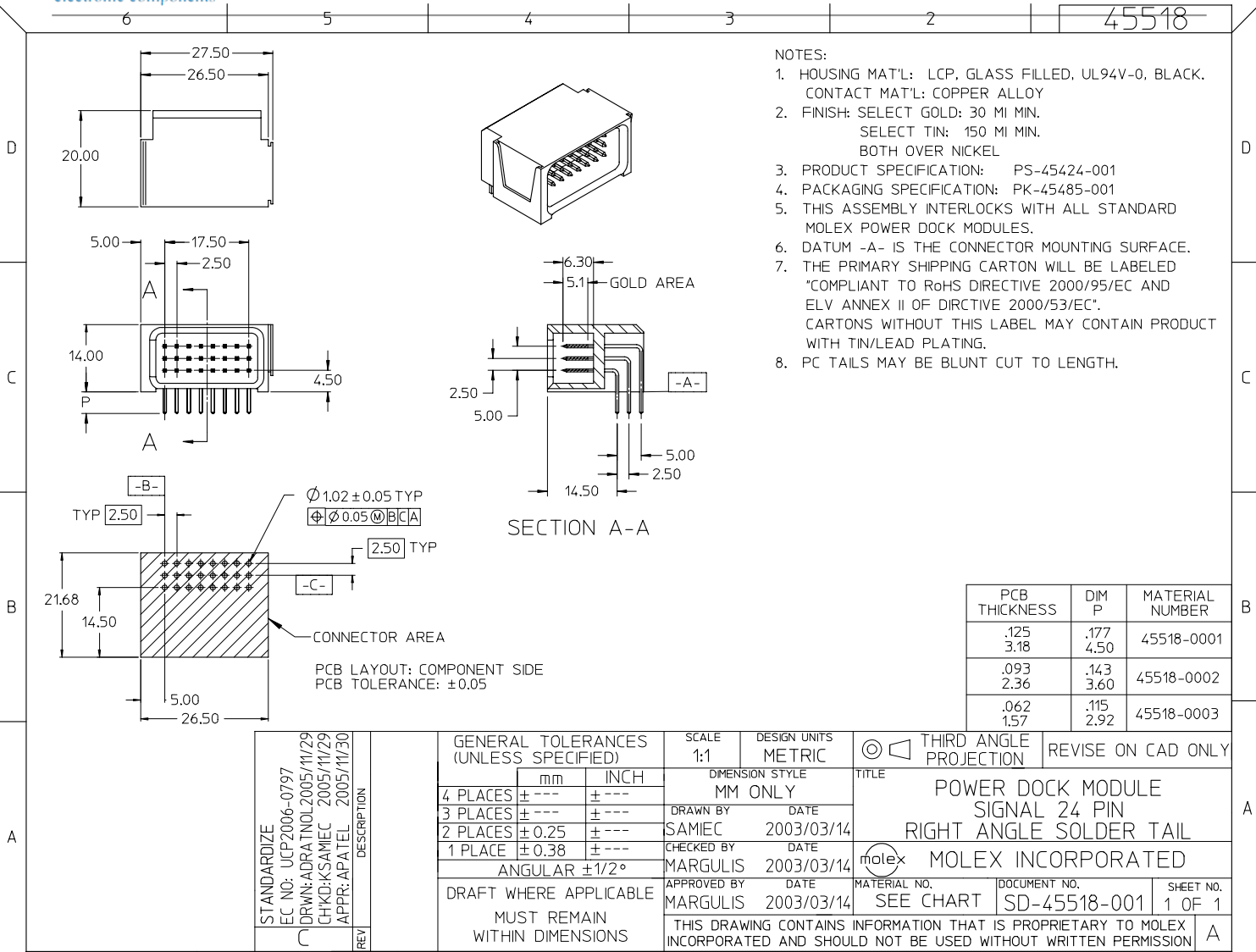
Stocking Distributor

Click to view price, real time Inventory, Delivery & Lifecycle Information:

[Molex Connector Corporation](#)
[0455180001](#)

For any questions, you can email us directly:

sales@integrated-circuit.com



- NOTES:
- HOUSING MAT'L: LCP, GLASS FILLED, UL94V-0, BLACK. CONTACT MAT'L: COPPER ALLOY
 - FINISH: SELECT GOLD: 30 MI MIN. SELECT TIN: 150 MI MIN. BOTH OVER NICKEL
 - PRODUCT SPECIFICATION: PS-45424-001
 - PACKAGING SPECIFICATION: PK-45485-001
 - THIS ASSEMBLY INTERLOCKS WITH ALL STANDARD MOLEX POWER DOCK MODULES.
 - DATUM -A- IS THE CONNECTOR MOUNTING SURFACE.
 - THE PRIMARY SHIPPING CARTON WILL BE LABELED "COMPLIANT TO RoHS DIRECTIVE 2000/95/EC AND ELV ANNEX II OF DIRECTIVE 2000/53/EC". CARTONS WITHOUT THIS LABEL MAY CONTAIN PRODUCT WITH TIN/LEAD PLATING.
 - PC TAILS MAY BE BLUNT CUT TO LENGTH.

PCB THICKNESS	DIM P	MATERIAL NUMBER
.125 3.18	.177 4.50	45518-0001
.093 2.36	.143 3.60	45518-0002
.062 1.57	.115 2.92	45518-0003

STANDARDIZE EC NO: UCP2006-0797 DRWN:ADRA/TNOL 2005/11/29 CHKD:KSAMEC 2005/11/29 APPR:APATEL 2005/11/30	DESCRIPTION REV	GENERAL TOLERANCES (UNLESS SPECIFIED)		SCALE 1:1	DESIGN UNITS METRIC	THIRD ANGLE PROJECTION	REVISE ON CAD ONLY
		4 PLACES ± --- ± ---	DIMENSION STYLE MM ONLY	TITLE POWER DOCK MODULE SIGNAL 24 PIN RIGHT ANGLE SOLDER TAIL			
		3 PLACES ± --- ± ---	DRAWN BY SAMEC DATE 2003/03/14	MOLEX INCORPORATED			
		2 PLACES ± 0.25 ± ---	CHECKED BY MARGULIS DATE 2003/03/14	MATERIAL NO. SEE CHART	DOCUMENT NO. SD-45518-001	SHEET NO. 1 OF 1	
		1 PLACE ± 0.38 ± ---	APPROVED BY MARGULIS DATE 2003/03/14	THIS DRAWING CONTAINS INFORMATION THAT IS PROPRIETARY TO MOLEX INCORPORATED AND SHOULD NOT BE USED WITHOUT WRITTEN PERMISSION			
DRAFT WHERE APPLICABLE MUST REMAIN WITHIN DIMENSIONS							