

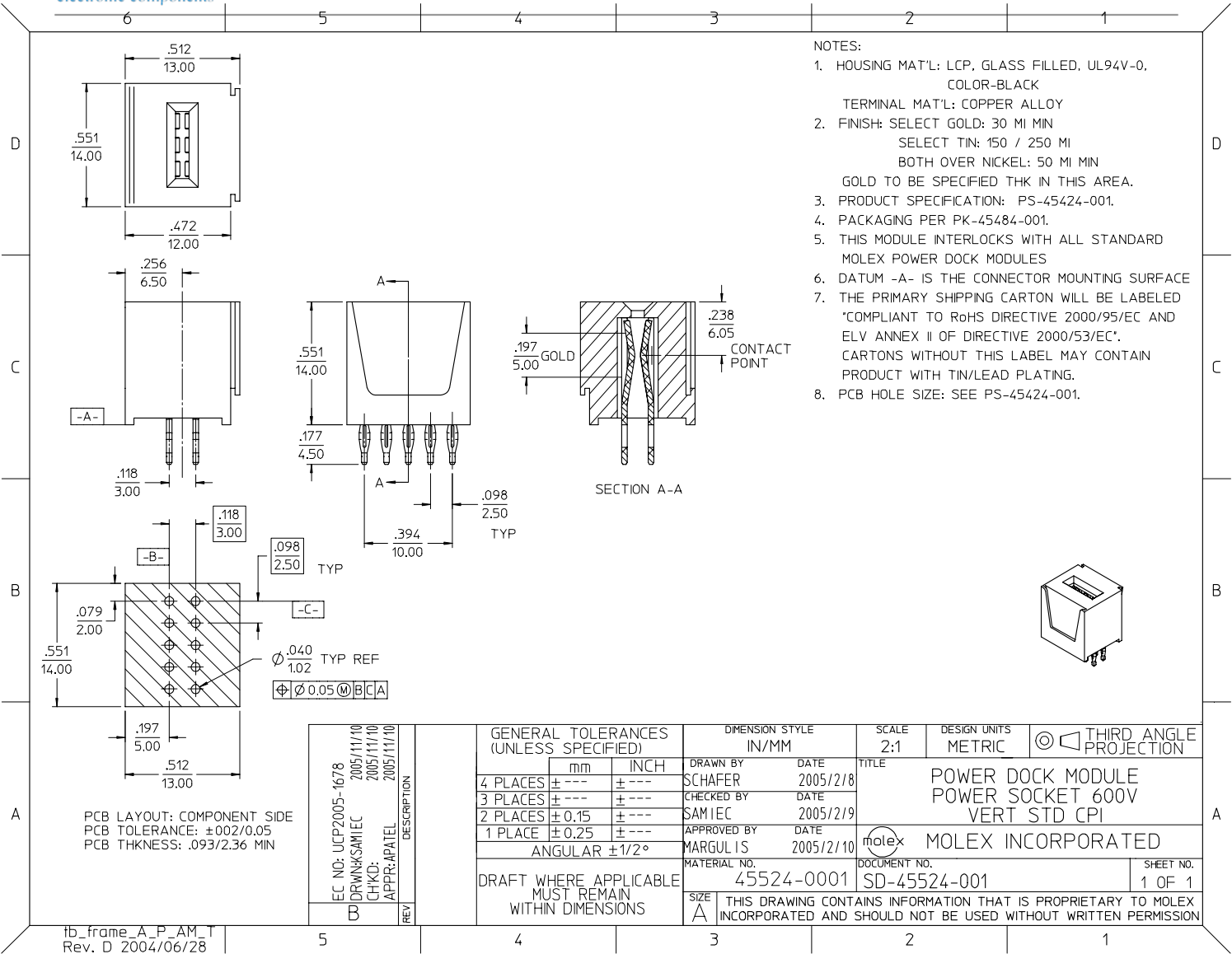
## **Excellent Integrated System Limited**

Stocking Distributor

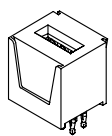
Click to view price, real time Inventory, Delivery & Lifecycle Information:

[Molex Connector Corporation](#)  
[0455240001](#)

For any questions, you can email us directly:  
[sales@integrated-circuit.com](mailto:sales@integrated-circuit.com)



- NOTES:
- HOUSING MAT'L: LCP, GLASS FILLED, UL94V-0, COLOR-BLACK  
TERMINAL MAT'L: COPPER ALLOY
  - FINISH: SELECT GOLD: 30 MI MIN  
SELECT TIN: 150 / 250 MI  
BOTH OVER NICKEL: 50 MI MIN  
GOLD TO BE SPECIFIED THK IN THIS AREA.
  - PRODUCT SPECIFICATION: PS-45424-001.
  - PACKAGING PER PK-45484-001.
  - THIS MODULE INTERLOCKS WITH ALL STANDARD MOLEX POWER DOCK MODULES
  - DATUM -A- IS THE CONNECTOR MOUNTING SURFACE
  - THE PRIMARY SHIPPING CARTON WILL BE LABELED "COMPLIANT TO RoHS DIRECTIVE 2000/95/EC AND ELV ANNEX II OF DIRECTIVE 2000/53/EC". CARTONS WITHOUT THIS LABEL MAY CONTAIN PRODUCT WITH TIN/LEAD PLATING.
  - PCB HOLE SIZE: SEE PS-45424-001.



PCB LAYOUT: COMPONENT SIDE  
PCB TOLERANCE:  $\pm 0.02 / 0.05$   
PCB THKNSS: .093 / 2.36 MIN

EC NO: UCP2005-1678 DRWNG: SAMIEC CHKD: 2005/11/10 APPR: APATEL 2005/11/10 DESCRIPTION	GENERAL TOLERANCES (UNLESS SPECIFIED)		DIMENSION STYLE IN/MM		SCALE 2:1	DESIGN UNITS METRIC	THIRD ANGLE PROJECTION
		mm	INCH	DRAWN BY	DATE	TITLE	
	4 PLACES	$\pm .005$	$\pm .0004$	SCHAFFER	2005/2/18	POWER DOCK MODULE POWER SOCKET 600V VERT STD CPI	
	3 PLACES	$\pm .005$	$\pm .0004$	CHECKED BY	DATE	MOLEX INCORPORATED	
	2 PLACES	$\pm 0.15$	$\pm .006$	SAMIEC	2005/2/19	MATERIAL NO. 45524-0001	
	1 PLACE	$\pm 0.25$	$\pm .010$	APPROVED BY	DATE	DOCUMENT NO. SD-45524-001	
	ANGULAR $\pm 1/2^\circ$		MARGULIS		2005/2/10	SHEET NO. 1 OF 1	
DRAFT WHERE APPLICABLE MUST REMAIN WITHIN DIMENSIONS				THIS DRAWING CONTAINS INFORMATION THAT IS PROPRIETARY TO MOLEX INCORPORATED AND SHOULD NOT BE USED WITHOUT WRITTEN PERMISSION			