

Excellent Integrated System Limited

Stocking Distributor

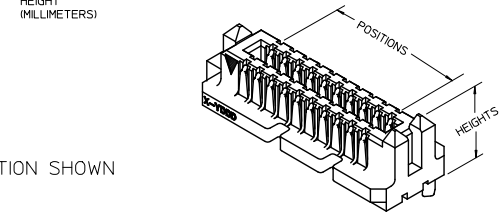
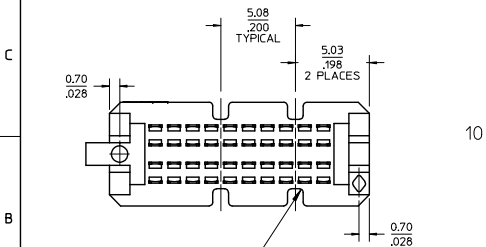
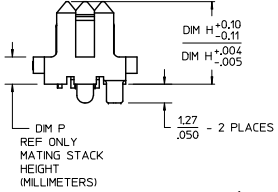
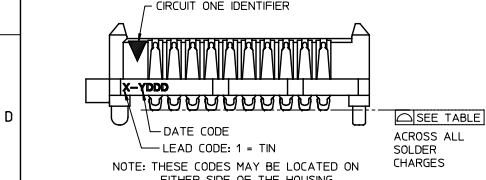
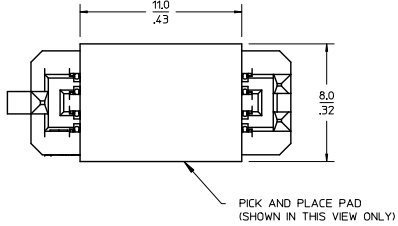
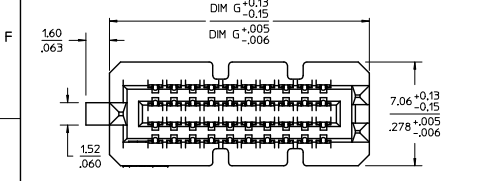
Click to view price, real time Inventory, Delivery & Lifecycle Information:

[Molex Connector Corporation](#)
[0465567245](#)

For any questions, you can email us directly:

sales@integrated-circuit.com

10 9 8 7 6 5 4 3 2 1



10 POSITION SHOWN

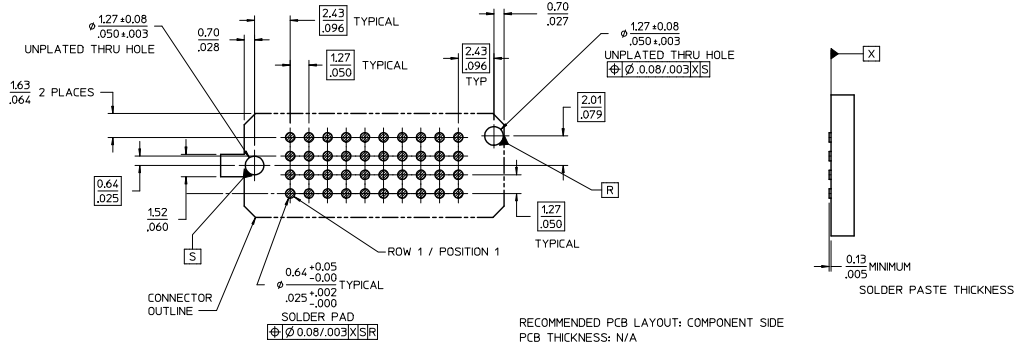
- NOTES:
- MATERIALS: HOUSING: GLASS FILLED LCP (LIQUID CRYSTAL POLYMER), UL94V-0, BLACK
CONTACTS: COPPER ALLOY
SOLDER CHARGE: 95.5% TIN, 3.8% SILVER, 0.7% COPPER
 - FINISHES:
CONTACT AREA: 30 MICROINCH MINIMUM GOLD
TAIL AREA:
--*1** ASSEMBLIES: 7 MICROINCH MINIMUM GOLD
ALL OTHER ASSEMBLIES: 50 MICROINCH MINIMUM TIN
ENTIRE TERMINAL: NICKEL UNDERPLATE
 - PRODUCT SPECIFICATION: PS-45970-001
 - PACKAGING SPECIFICATION: PK-45970-002 (TAPE AND REEL)
 - MATES WITH SEARAY RECEPTACLE ASSEMBLY SERIES 46557
 - APPLICATION SPECIFICATION: AS-45970-001
 - COSMETIC SPECIFICATION: PS-45499-002 CLASS B
 - PART STATUS: CONTACT MOLEX

| POSITIONS | DIM G | | TOTAL NUMBER OF EDGE NOTCHES |
|-----------|-------------|-----------|------------------------------|
| 10 | 17.69/1.698 | 0.15/.006 | 4 |
| 15 | 24.04/1.948 | 0.15/.006 | 6 |
| 20 | 30.39/1.198 | 0.15/.006 | 10 |
| 25 | 36.74/1.448 | 0.15/.006 | 12 |
| 30 | 43.09/1.698 | 0.15/.006 | 14 |
| 35 | 49.44/1.948 | 0.15/.006 | 16 |
| 40 | 55.79/2.198 | 0.15/.006 | 20 |
| 45 | 62.14/2.448 | 0.23/.009 | 22 |
| 50 | 68.49/2.698 | 0.23/.009 | 24 |

| | | | | | | | | |
|---|---------------------|--|--|---|--|--|--------------|------------------------|
| ADD PNP PAD DIMS EC NO: IJCP2015-5/93 DRWINBARKER 2015/05/18 CHKD: TBARRA 2015/08/04 APPR: SMILLER 2015/08/07 | QUALITY SYMBOLS | GENERAL TOLERANCES (UNLESS SPECIFIED) | | DIMENSION STYLE | | SCALE | DESIGN UNITS | THIRD ANGLE PROJECTION |
| | | | | MM/IN | | 4:1 | INCH | |
| | | | | DRAWN BY DATE | | TITLE | | |
| | | | | CHECKED BY DATE | | SEARAY SLIM (4 ROW) PLUG, ASSEMBLY 1.27/.050 PITCH | | |
| | | APPROVED BY DATE | | MATERIAL NO. | | DOCUMENT NO. | | |
| | | ANGULAR ±1/2° | | SEE TABLE SHT 3 | | SD-46556-001 | | |
| | | DRAFT WHERE APPLICABLE MUST REMAIN WITHIN DIMENSIONS | | THIS DRAWING CONTAINS INFORMATION THAT IS PROPRIETARY TO MOLEX INCORPORATED AND SHOULD NOT BE USED WITHOUT WRITTEN PERMISSION | | SHEET NO. 1 OF 3 | | |

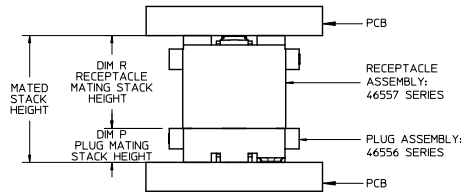
9 8 7 6 5 4 3 2 1

10 9 8 7 6 5 4 3 2 1



| | | DIM R RECEPTACLE STACK HEIGHT | | | | | |
|----------------------------|------|----------------------------------|------|------|------|------|-----|
| | | MM | 5.0 | 6.0 | 6.5 | 7.5 | 8.0 |
| DIM P PLUG STACK HEIGHT | 2.0 | 7.0 | 8.0 | 8.5 | 9.5 | 10.0 | |
| | 3.0 | 8.0 | 9.0 | 9.5 | 10.5 | 11.0 | |
| | 3.5 | 8.5 | 9.5 | 10.0 | 11.0 | 11.5 | |
| | 2.5 | 7.5 | 8.5 | 9.0 | 10.0 | 10.5 | |
| | 4.5 | 9.5 | 10.5 | 11.0 | 12.0 | 12.5 | |
| 5.0 | 10.0 | 11.0 | 11.5 | 12.5 | 13.0 | | |
| 7.0 | 12.0 | 13.0 | 13.5 | 14.5 | 15.0 | | |

MATED STACK HEIGHTS
GIVEN IN MILLIMETERS (MM) FOR REFERENCE ONLY



STACK HEIGHTS
GIVEN IN MILLIMETERS (MM) FOR REFERENCE ONLY

| | | | | | | | | |
|--|--|---------------------------------------|-----------------|-----------------|--------------|--|---|------------------------|
| SEE SHEET 1 E.C. NO.: ICP2015-5493 2015/05/18 DR:WINBARKER CHKD:TBARRA 2015/08/04 APPR:SMILLER 2015/08/07 | QUALITY SYMBOLS | GENERAL TOLERANCES (UNLESS SPECIFIED) | | DIMENSION STYLE | | SCALE | DESIGN UNITS | THIRD ANGLE PROJECTION |
| | $\nabla=0$ $\nabla=0$ $\nabla=0$ | mm | INCH | MM/IN | | 4:1 | INCH | |
| | | 4 PLACES ± | ± | DRAWN BY | DATE | TITLE | | |
| | | 3 PLACES ± | ±.010 | TGREGOR I | 2007/05/17 | SEARAY SLIM (4 ROW) PLUG, ASSEMBLY 1.27/.050 PITCH | | |
| | 2 PLACES ± | ±.015 | CHECKED BY | DATE | molex | | | |
| | 1 PLACE ± | ±.038 | JCOMERC I | 2007/05/17 | SD-46556-001 | | | |
| | 0 PLACE ± | ± | APPROVED BY | DATE | SHEET NO. | | | |
| | | | JCOMERC I | 2010/03/05 | 2 OF 3 | | | |
| | | | MATERIAL NO. | | DOCUMENT NO. | | THIS DRAWING CONTAINS INFORMATION THAT IS PROPRIETARY TO MOLEX INCORPORATED AND SHOULD NOT BE USED WITHOUT WRITTEN PERMISSION | |
| | | | SEE TABLE SHT 3 | | | | | |

9 8 7 6 5 4 3 2 1

| DIM P: | 2.0 MM | 3.0 MM | 3.5 MM | 2.5 MM | 4.5 MM | 5.0 MM | 7.0 MM |
|-----------|-------------|-------------|-------------|-------------|-------------|-------------|-------------|
| DIM H: | 5.61/.221 | 6.60/.260 | 7.11/.280 | 6.12/.241 | 8.10/.319 | 8.61/.339 | 10.71/.418 |
| POSITIONS | MATERIAL NO | MATERIAL NO | MATERIAL NO | MATERIAL NO | MATERIAL NO | MATERIAL NO | MATERIAL NO |
| 10 | 46556-1145 | 46556-1245 | 46556-1345 | 46556-1445 | 46556-1545 | 46556-1645 | 46556-1745 |
| 20 | 46556-2145 | 46556-2245 | 46556-2345 | 46556-2445 | 46556-2545 | 46556-2645 | 46556-2745 |
| 30 | 46556-3145 | 46556-3245 | 46556-3345 | 46556-3445 | 46556-3545 | 46556-3645 | 46556-3745 |
| 40 | 46556-4145 | 46556-4245 | 46556-4345 | 46556-4445 | 46556-4545 | 46556-4645 | 46556-4745 |
| 50 | 46556-5145 | 46556-5245 | 46556-5345 | 46556-5445 | 46556-5545 | 46556-5645 | 46556-5745 |
| 15 | 46556-6145 | 46556-6245 | 46556-6345 | 46556-6445 | 46556-6545 | 46556-6645 | 46556-6745 |
| 25 | 46556-7145 | 46556-7245 | 46556-7345 | 46556-7445 | 46556-7545 | 46556-7645 | 46556-7745 |
| 35 | 46556-8145 | 46556-8245 | 46556-8345 | 46556-8445 | 46556-8545 | 46556-8645 | 46556-8745 |
| 45 | 46556-9145 | 46556-9245 | 46556-9345 | 46556-9445 | 46556-9545 | 46556-9645 | 46556-9745 |

MATING STACK HEIGHTS (DIMENSION P)
GIVEN IN MILLIMETERS (MM) FOR REFERENCE ONLY

| | | | | | | | | |
|---|--|---------------------------------------|--|-----------------|--------------|--|--------------|------------------------|
| SEE SHEET 1 EC NO: JUCP2015-5493 DRAWN BY: BARKER 2015/05/18 CHECKED BY: IBARRA 2015/08/04 APPROVED BY: MILLER 2015/08/07 N REV | QUALITY SYMBOLS | GENERAL TOLERANCES (UNLESS SPECIFIED) | | DIMENSION STYLE | | SCALE | DESIGN UNITS | THIRD ANGLE PROJECTION |
| | $\nabla=0$ $\nabla=0$ $\nabla=0$ | mm | INCH | MM/IN | | 1:1 | INCH | |
| | | 4 PLACES ± .--- | ± .--- | DRAWN BY | DATE | TITLE | | |
| | | 3 PLACES ± .--- | ± .010 | TGREGORI | 2007/05/17 | SEARAY SLIM (4 ROW) PLUG, ASSEMBLY 1.27/.050 PITCH | | |
| | 2 PLACES ± 0.25 | ± .015 | CHECKED BY | DATE | | | | |
| | 1 PLACE ± 0.38 | ± .--- | JCOMERCI | 2007/05/17 | | | | |
| | 0 PLACE ± | ± | APPROVED BY | DATE | DOCUMENT NO. | | | |
| | | | JCOMERCI | 2010/03/05 | SD-46556-001 | | | |
| | | | MATERIAL NO. | | SHEET NO. | | | |
| | | | SEE TABLE | | 3 OF 3 | | | |
| | | | ANGULAR ±1/2° DRAFT WHERE APPLICABLE MUST REMAIN WITHIN DIMENSIONS | | | | | |
| | | | THIS DRAWING CONTAINS INFORMATION THAT IS PROPRIETARY TO MOLEX INCORPORATED AND SHOULD NOT BE USED WITHOUT WRITTEN PERMISSION | | | | | |