

Excellent Integrated System Limited

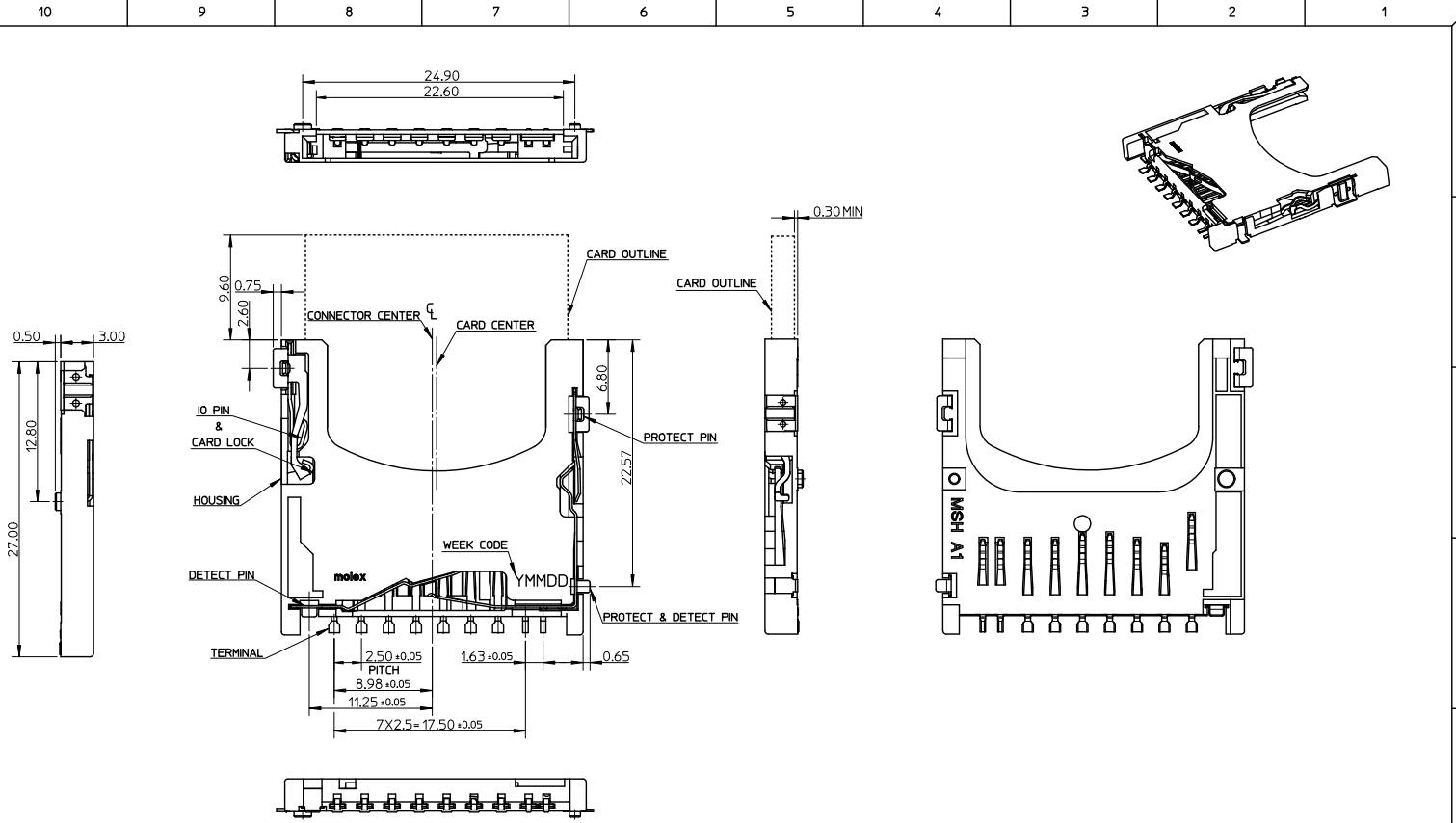
Stocking Distributor

Click to view price, real time Inventory, Delivery & Lifecycle Information:

[Molex Connector Corporation](#)
[0677818001](#)

For any questions, you can email us directly:

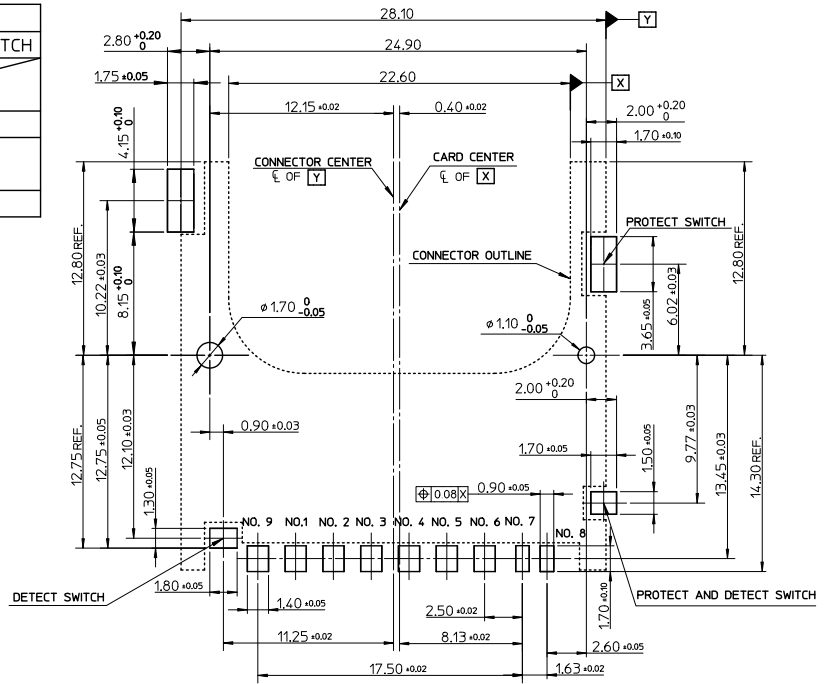
sales@integrated-circuit.com



REVISED EC NO: SH2010-0390 DRAWN: QZFHANG CHKD: GLLI APPR: XJSONG	2010/04/07 2010/04/13 2010/05/18	QUALITY SYMBOLS √=0 √=0 √=0	GENERAL TOLERANCES (UNLESS SPECIFIED)		DIMENSION STYLE MM ONLY		SCALE 1:1	DESIGN UNITS METRIC	THIRD ANGLE PROJECTION		
			4 PLACES ± --- ± ---	3 PLACES ± --- ± ---	DRAWN BY QLZHANG	DATE 2004/12/01	TITLE SD MEMORY CARD CONNECTOR NORMAL TYPE(NO PUSH FUNCTION,LEAD-FREE)				
			2 PLACES ± 0.25 ± ---	1 PLACE ± 0.25 ± ---	CHECKED BY HARVEY	DATE 2004/12/01	MOLEX INCORPORATED				
			ANGULAR ± 2 °		APPROVED BY XJSONG	DATE 2010/04/14	MATERIAL NO. 67781-8001	DOCUMENT NO. SD-67781-004	SHEET NO. 1 OF 3		
DRAFT WHERE APPLICABLE MUST REMAIN WITHIN DIMENSIONS			THIS DRAWING CONTAINS INFORMATION THAT IS PROPRIETARY TO MOLEX INCORPORATED AND SHOULD NOT BE USED WITHOUT WRITTEN PERMISSION								

10 9 8 7 6 5 4 3 2 1

OPENING AND CLOSE OF EACH SWITCH			
CARD INSERTION STATUS	WRITE PROTECT SWITCH		CARD DETECT SWITCH
	WRITE PROTECT POSITION	WRITE ENABLE POSITION	
CARD UNINSERTION	OPEN	OPEN	OPEN
CARD INSERTION PROCESS	CLOSE	CLOSE	OPEN
CARD INSERTION	OPEN	CLOSE	CLOSE



RECOMMENDED P.C.B. PATTERN LAYOUT

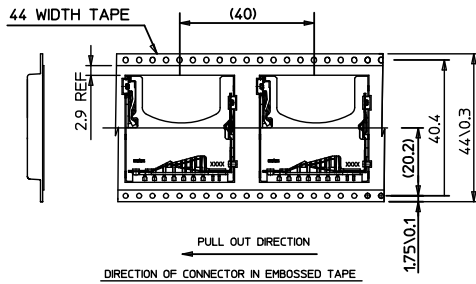
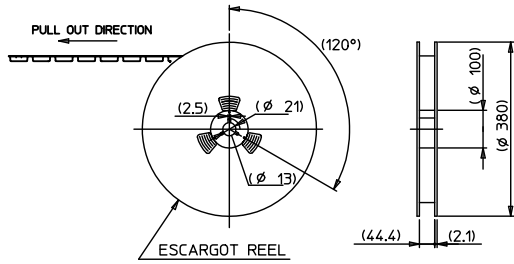
NOTES :

- MATERIAL :
HOUSING : HEAT RESISTANCE POLYMER, UL94-V0, BLACK.
TERMINAL : COPPER ALLOY.
PLATING : SELECTIVE GOLD PLATING
PROTECT PIN : COPPER ALLOY.
PLATING : CONTACT AREA : SELECTIVE GOLD PLATING .
PROTECT AND DETECT PIN : COPPER ALLOY.
PLATING : CONTACT AREA : SELECTIVE GOLD PLATING.
DETECT PIN : COPPER ALLOY.
PLATING : CONTACT AREA : SELECTIVE GOLD PLATING.
CARD LOCK PIN : STAINLESS STEEL.
- PLATING OF SOLDER AREA FOR ALL TERMINALS AND PINS : PURE TIN PLATING.
- PLATING OF UNDER PLATING FOR ALL TERMINALS AND PINS : NICKEL PLATING.
- TERMINALS AND PINS COPLANARITY TO BE 0.1mm MAXIMUM.
- PRODUCT SPECIFICATION REFER TO PS-67781-001.
- PACKAGE INFORMATION REFER TO PK-67781-001.

SEE SHEET 1 EC NO. SH2010-0390 DRAWN: QIZHANG 2010/04/07 CHK: CHENGLI 2010/04/13 APPR: XJSONG 2010/05/18 REV DESCRIPTION	QUALITY SYMBOLS	GENERAL TOLERANCES (UNLESS SPECIFIED)	DIMENSION STYLE	SCALE	DESIGN UNITS	THIRD ANGLE PROJECTION																		
	$\nabla=0$ $\nabla=0$ $\nabla=0$	<table border="1"> <thead> <tr> <th></th> <th>mm</th> <th>INCH</th> </tr> </thead> <tbody> <tr> <td>4 PLACES</td> <td>\pm---</td> <td>\pm---</td> </tr> <tr> <td>3 PLACES</td> <td>\pm---</td> <td>\pm---</td> </tr> <tr> <td>2 PLACES</td> <td>± 0.25</td> <td>\pm---</td> </tr> <tr> <td>1 PLACE</td> <td>± 0.25</td> <td>\pm---</td> </tr> <tr> <td colspan="3">ANGULAR $\pm 2^\circ$</td> </tr> </tbody> </table>		mm	INCH	4 PLACES	\pm ---	\pm ---	3 PLACES	\pm ---	\pm ---	2 PLACES	± 0.25	\pm ---	1 PLACE	± 0.25	\pm ---	ANGULAR $\pm 2^\circ$			MM ONLY	1:1	METRIC	
		mm	INCH																					
	4 PLACES	\pm ---	\pm ---																					
3 PLACES	\pm ---	\pm ---																						
2 PLACES	± 0.25	\pm ---																						
1 PLACE	± 0.25	\pm ---																						
ANGULAR $\pm 2^\circ$																								
DRAFT WHERE APPLICABLE MUST REMAIN WITHIN DIMENSIONS	<table border="1"> <thead> <tr> <th>DRAWN BY</th> <th>DATE</th> <th>TITLE</th> </tr> </thead> <tbody> <tr> <td>QIZHANG</td> <td>2004/12/01</td> <td>SD MEMORY CARD CONNECTOR NORMAL TYPE(NO PUSH FUNCTION,LEAD-FREE)</td> </tr> <tr> <th>CHECKED BY</th> <th>DATE</th> <th></th> </tr> <tr> <td>HARVEY</td> <td>2004/12/01</td> <td></td> </tr> <tr> <th>APPROVED BY</th> <th>DATE</th> <th></th> </tr> <tr> <td>XJSONG</td> <td>2010/04/14</td> <td></td> </tr> </tbody> </table>	DRAWN BY	DATE	TITLE	QIZHANG	2004/12/01	SD MEMORY CARD CONNECTOR NORMAL TYPE(NO PUSH FUNCTION,LEAD-FREE)	CHECKED BY	DATE		HARVEY	2004/12/01		APPROVED BY	DATE		XJSONG	2010/04/14		MATERIAL NO. 67781-8001	DOCUMENT NO. SD-67781-004	SHEET NO. 2 OF 3		
DRAWN BY	DATE	TITLE																						
QIZHANG	2004/12/01	SD MEMORY CARD CONNECTOR NORMAL TYPE(NO PUSH FUNCTION,LEAD-FREE)																						
CHECKED BY	DATE																							
HARVEY	2004/12/01																							
APPROVED BY	DATE																							
XJSONG	2010/04/14																							
THIS DRAWING CONTAINS INFORMATION THAT IS PROPRIETARY TO MOLEX INCORPORATED AND SHOULD NOT BE USED WITHOUT WRITTEN PERMISSION																								

9 8 7 6 5 4 3 2 1

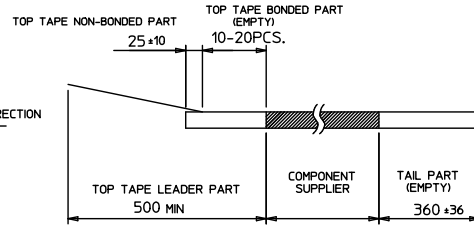
10 9 8 7 6 5 4 3 2 1



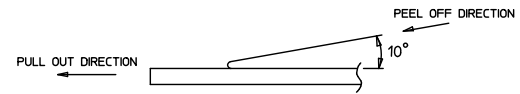
NOTES

1. NUMBER OF CONNECTORS: 400 PCS/REEL

2.



3. PEEL-OFF FORCE OF TOP TAPE: 0.1 - 13 N (10.2 - 130gf)
(PEELING DIRECTION AS SHOWN IN FOLLOWING FIG.)
<PEEL-OFF SPEED: 300mm/min (REF.)>



SEE SHEET 1 EC NO: SH2010-0390 DRAWN: QIZHANG 2010/04/07 CHKD: GLLI 2010/04/13 APPR: XJSONG 2010/05/18	QUALITY SYMBOLS √=0 √=0 √=0	GENERAL TOLERANCES (UNLESS SPECIFIED)		DIMENSION STYLE MM ONLY		SCALE 1:1	DESIGN UNITS METRIC	THIRD ANGLE PROJECTION		
		mm	INCH	DRAWN BY QIZHANG	DATE 2004/12/01	TITLE SD MEMORY CARD CONNECTOR NORMAL TYPE(NO PUSH FUNCTION, LEAD-FREE)	MOLEX INCORPORATED			
REV	DESCRIPTION	4 PLACES ± --- ± ---	3 PLACES ± --- ± ---	2 PLACES ± 0.25 ± ---	1 PLACE ± 0.25 ± ---	APPROVED BY XJSONG	DATE 2010/04/14	MATERIAL NO. 67781-8001	DOCUMENT NO. SD-67781-004	SHEET NO. 3 OF 3
		DRAFT WHERE APPLICABLE MUST REMAIN WITHIN DIMENSIONS		ANGULAR ± 2 °		THIS DRAWING CONTAINS INFORMATION THAT IS PROPRIETARY TO MOLEX INCORPORATED AND SHOULD NOT BE USED WITHOUT WRITTEN PERMISSION				

9 8 7 6 5 4 3 2 1