

## Excellent Integrated System Limited

Stocking Distributor

Click to view price, real time Inventory, Delivery & Lifecycle Information:

[Molex Connector Corporation](#)  
[0732510303](#)

For any questions, you can email us directly:

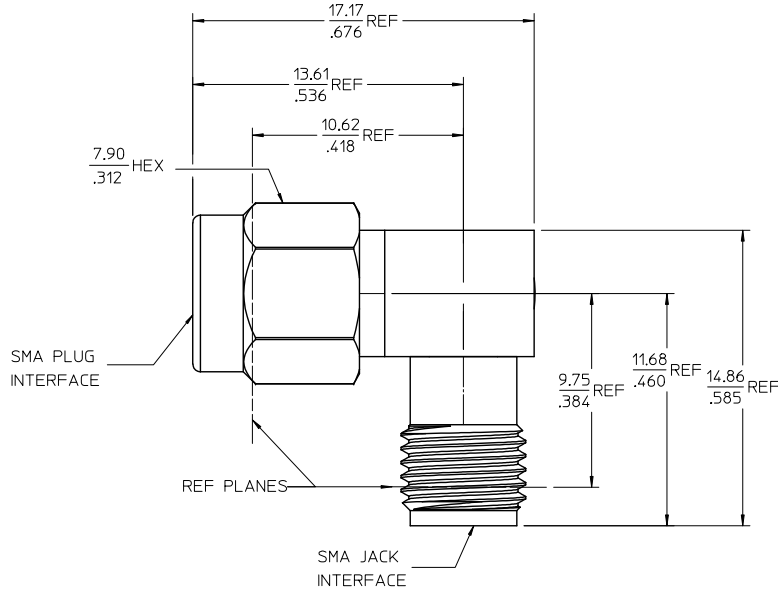
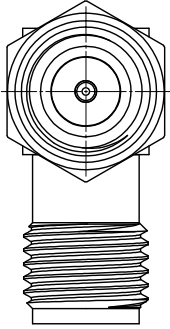
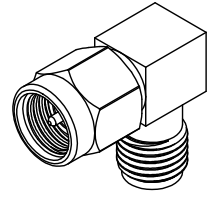
[sales@integrated-circuit.com](mailto:sales@integrated-circuit.com)

MATERIALS AND FINISHES:

BODY & COUPLING NUT STAINLESS STEEL  
PASSIVATED

CENTER CONTACT BERYLLIUM COPPER  
PLATED: GOLD (30μ-in MIN)

INSULATOR: PTFE



PACKAGING: TRAY

PART # 73251-0303

MIL-STD-348B, FIG. 310.1	SMA PLUG INTERFACE
MIL-STD-348B, FIG. 310.2	SMA JACK INTERFACE
SPECIFICATION	DESCRIPTION

<p><b>CHANGED PACKAGE NOTE</b> EC NO: URF2016-0285 DRAWN BY: DRWBRADONALD 2015/10/13 CHECKED BY: CHKDLIM 2015/10/13 APPROVED BY: APPR:ROBERTSON 2015/10/14</p>	<p><b>QUALITY SYMBOLS</b> ▽=0 ▽=0</p>	<p>GENERAL TOLERANCES (UNLESS SPECIFIED)</p>		<p>DIMENSION STYLE MM/IN</p>		SCALE	DESIGN UNITS	THIRD ANGLE PROJECTION	
		4 PLACES ± --- ± ---	mm	INCH	DRAWN BY	DATE	<p>TITLE ADAPTOR SMA P/SMA J RA 50 OHMS EWR-2024 SMA-PJ/AD</p>	<p>MOLEX INCORPORATED</p>	<p>SHEET NO. 1 OF 1</p>
		3 PLACES ± --- ± 0.025			CHECKED BY	DATE			
		2 PLACES ± 0.10 ± ---			APPROVED BY	DATE			
1 PLACE ± --- ± ---			GMH	1998/01/06					
<p>ANGULAR ± 2 °</p>		<p>DRAFT WHERE APPLICABLE MUST REMAIN WITHIN DIMENSIONS</p>		<p>MATERIAL NO. 732510303</p>		<p>DOCUMENT NO. SD-73251-030</p>			