

## Excellent Integrated System Limited

Stocking Distributor

Click to view price, real time Inventory, Delivery & Lifecycle Information:

[Molex Connector Corporation](#)  
[0732540090](#)

For any questions, you can email us directly:  
[sales@integrated-circuit.com](mailto:sales@integrated-circuit.com)

MATERIALS AND FINISHES

COUPLING SLEEVE: BRASS  
PLATED NICKEL

BODY: BRASS  
PLATED TRI-M3

RETENTION CAP: BRASS  
PLATED TRI-M3

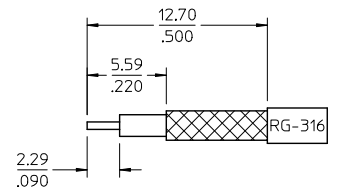
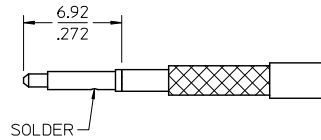
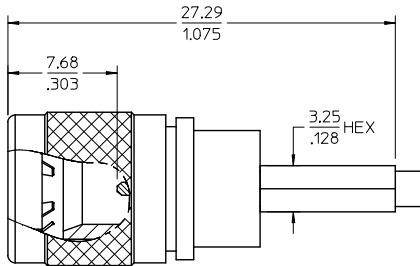
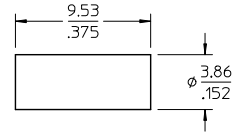
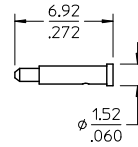
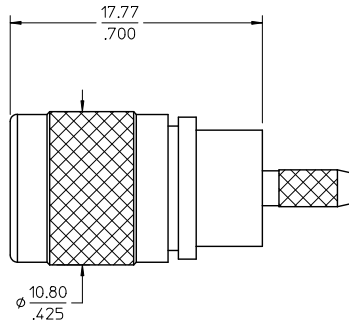
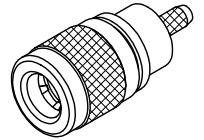
INSULATORS: TEFLON

RETENTION SPRING: STAINLESS STEEL  
PASSIVATED

GROUND SPRING: BERYLLIUM COPPER  
PLATED GOLD

CONTACT: BRASS  
PLATED GOLD  
OVER HIGH PHOSPHOR NICKEL

CRIMP TUBE: BRASS  
PLATED NICKEL



RECOMMENDED CABLE STRIP DIMENSION

73254-0091	ONE PIECE 73254-0090 PER BAG
73254-0090	TRAY
PART NO.	DESCRIPTION

CHG: UPDATE PACKAGING FOR 73254-0090 PER RF15-E212	EC NO: URF2015-0658	DRAWN BY: DRW:RVEH	DATE: 2015/05/29	QUALITY SYMBOLS	GENERAL TOLERANCES (UNLESS SPECIFIED)		DIMENSION STYLE		SCALE	DESIGN UNITS	THIRD ANGLE PROJECTION	TITLE QMA PLUG STRAIGHT RG316 50 OHMS QMA-PC, EWR-2187 <b>molex</b>	DOCUMENT NO. SD-73254-009	SHEET NO. 1 OF 1
					mm	INCH	MM/IN	5:1	INCH	☉				
				▽=0	4 PLACES	± ---	± ---	DRAWN BY	DATE					
				▽=0	3 PLACES	± ---	± ---	CHECKED BY	DATE					
				▽=0	2 PLACES	± ---	± ---	TEF	2003/10/07					
					1 PLACE	± ---	± ---	APPROVED BY	DATE					
					0 PLACE	± ---	± ---	GMH	2003/10/07					
					ANGULAR ± 2 °		MATERIAL NO.		DOCUMENT NO.		SHEET NO.			
					DRAFT WHERE APPLICABLE MUST REMAIN WITHIN DIMENSIONS		SEE TABLE		THIS DRAWING CONTAINS INFORMATION THAT IS PROPRIETARY TO MOLEX INCORPORATED AND SHOULD NOT BE USED WITHOUT WRITTEN PERMISSION					