

Excellent Integrated System Limited

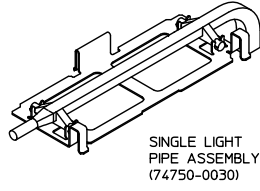
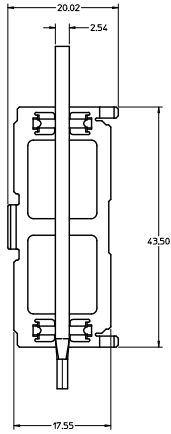
Stocking Distributor

Click to view price, real time Inventory, Delivery & Lifecycle Information:

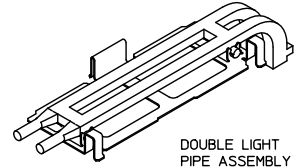
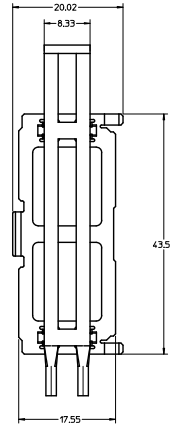
[Molex Connector Corporation](#)
[0747500030](#)

For any questions, you can email us directly:

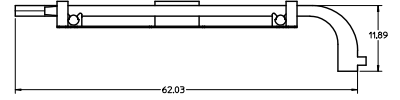
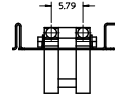
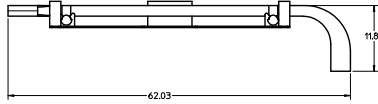
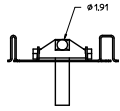
sales@integrated-circuit.com



SINGLE LIGHT PIPE ASSEMBLY (74750-0030)



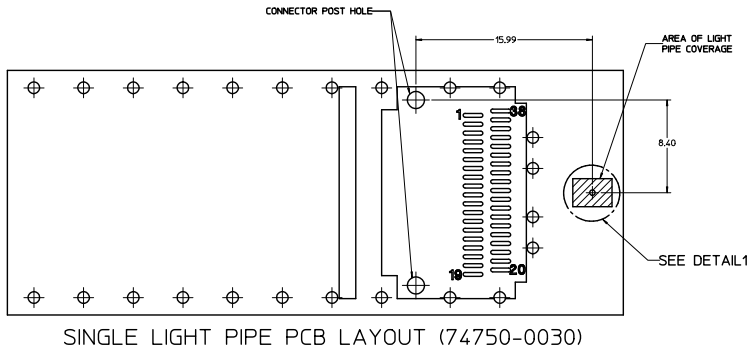
DOUBLE LIGHT PIPE ASSEMBLY (74750-0031)



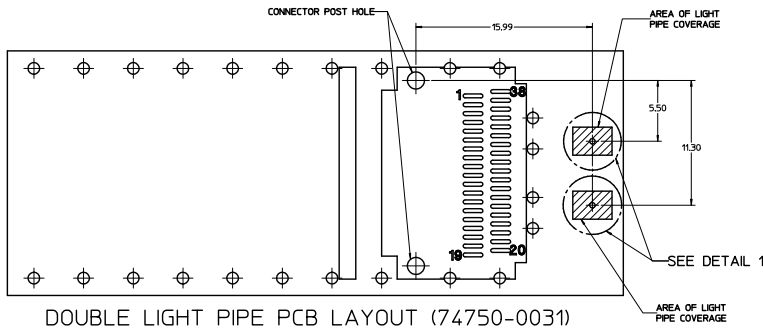
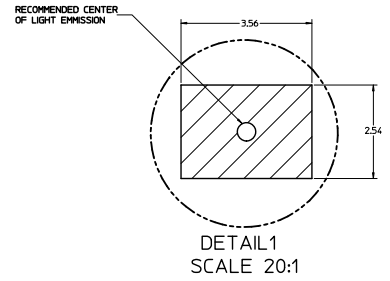
NOTES:

- MATERIALS:
LIGHT PIPE CLIP: UNPLATED STAINLESS STEEL
LIGHT PIPE: CLEAR LEXAN
- THESE LIGHT PIPE ASSEMBLIES TO BE USED WITH THE QSFP CAGE ASSEMBLY (74750-0001)
- IT IS RECOMMENDED THAT THE CAGE ASSEMBLY BE PRESSED INTO THE PCB PRIOR TO ASSEMBLING THE LIGHT PIPE ASSEMBLY
- RECOMMENDED LED'S INCLUDE THE FOLLOWING MANUFACTURES:
DIALIGHT: 597-77X1-5XX SERIES
CHICAGO MINIATURE: 7016 SERIES
KINGBRIGHT: APBL3025 SERIES (BICOLOR)
APL3015 SERIES (SINGLE COLOR)
- THIS PRODUCT MEETS THE RESTRICTION OF HAZARDOUS SUBSTANCES IN ELECTRICAL AND ELECTRONIC EQUIPMENT (RoHS) DIRECTIVE (2002/95/EC)

ENTER DESCRIPTION EC: 074750-0030-0030 DRAWN: CHIRSCY 2007/01/10 CHECKED: BRUSSELL 2007/01/10 APPROVED: RMAHMOOD 2010/03/31 REV:	QUALITY SYMBOLS 	GENERAL TOLERANCES (UNLESS SPECIFIED) <table border="1"> <tr> <th></th> <th>mm</th> <th>INCH</th> </tr> <tr> <td>4 PLACES</td> <td>± 0.25</td> <td>± 0.010</td> </tr> <tr> <td>3 PLACES</td> <td>± 0.20</td> <td>± 0.008</td> </tr> <tr> <td>2 PLACES</td> <td>± 0.15</td> <td>± 0.006</td> </tr> <tr> <td>1 PLACE</td> <td>± 0.25</td> <td>± 0.010</td> </tr> <tr> <td colspan="3">ANGULAR ± 1 °</td> </tr> </table>		mm	INCH	4 PLACES	± 0.25	± 0.010	3 PLACES	± 0.20	± 0.008	2 PLACES	± 0.15	± 0.006	1 PLACE	± 0.25	± 0.010	ANGULAR ± 1 °			DIMENSION STYLE MM ONLY	SCALE 3:1	DESIGN UNITS METRIC	THIRD ANGLE PROJECTION
		mm	INCH																					
	4 PLACES	± 0.25	± 0.010																					
	3 PLACES	± 0.20	± 0.008																					
2 PLACES	± 0.15	± 0.006																						
1 PLACE	± 0.25	± 0.010																						
ANGULAR ± 1 °																								
DRAFT WHERE APPLICABLE MUST REMAIN WITHIN DIMENSIONS		MATERIAL NO. SEE ABOVE	DATE 2007/01/10	DATE 2007/01/10	TITLE QSFP LIGHT PIPE ASSEMBLIES																			
APPROVED BY RMAHMOOD		DATE 2010/03/31	MOLEX INCORPORATED		DOCUMENT NO. SD-74750-0030																			
SIZE D		THIS DRAWING CONTAINS INFORMATION THAT IS PROPRIETARY TO MOLEX INCORPORATED AND SHOULD NOT BE USED WITHOUT WRITTEN PERMISSION		SHEET NO. 1 OF 4																				



SINGLE LIGHT PIPE PCB LAYOUT (74750-0030)

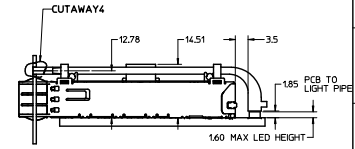
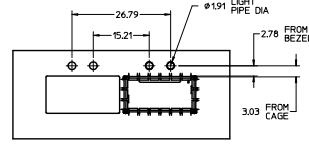
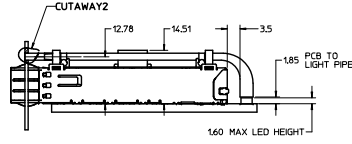
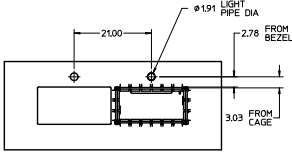
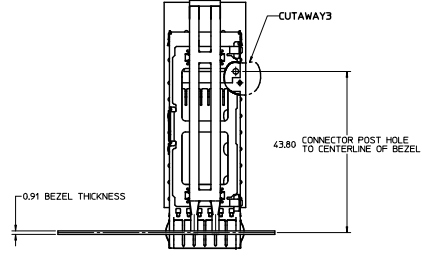
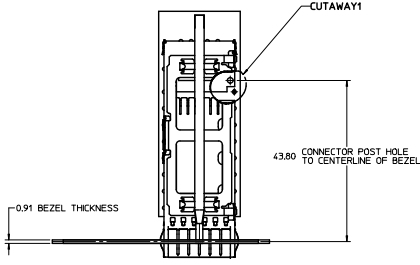


DOUBLE LIGHT PIPE PCB LAYOUT (74750-0031)

ENTER DESCRIPTION EC NO. 0747500-0030 DRAWN BY: CHIRSCY 2008/07/08 CHECKED BY: CHIRSCY 2008/07/10 APPROVED BY: BRUSSELL 2008/07/11 DATE: 2008/07/11	QUALITY SYMBOLS ▽=0 ▽=0	GENERAL TOLERANCES (UNLESS SPECIFIED) <table border="1"> <tr> <th></th> <th>mm</th> <th>INCH</th> </tr> <tr> <td>4 PLACES</td> <td>± 0.15</td> <td>± 0.006</td> </tr> <tr> <td>3 PLACES</td> <td>± 0.25</td> <td>± 0.010</td> </tr> <tr> <td>2 PLACES</td> <td>± 0.38</td> <td>± 0.015</td> </tr> <tr> <td>1 PLACE</td> <td>± 0.51</td> <td>± 0.020</td> </tr> <tr> <td colspan="3">ANGULAR ± 1 °</td> </tr> </table>		mm	INCH	4 PLACES	± 0.15	± 0.006	3 PLACES	± 0.25	± 0.010	2 PLACES	± 0.38	± 0.015	1 PLACE	± 0.51	± 0.020	ANGULAR ± 1 °			DIMENSION STYLE MM ONLY	SCALE 6:1	DESIGN UNITS METRIC	THIRD ANGLE PROJECTION
		mm	INCH																					
	4 PLACES	± 0.15	± 0.006																					
	3 PLACES	± 0.25	± 0.010																					
2 PLACES	± 0.38	± 0.015																						
1 PLACE	± 0.51	± 0.020																						
ANGULAR ± 1 °																								
DRAFT WHERE APPLICABLE MUST REMAIN WITHIN DIMENSIONS	DRAWN BY CHIRSCY	DATE 2007/01/10	TITLE QSFP LIGHT PIPE ASSEMBLIES	CHECKED BY BRUSSELL	DATE 2007/01/10	APPROVED BY MAHMOOD	DATE 2010/03/31																	
MATERIAL NO. SEE SHEET 1	MOLEX	MOLEX INCORPORATED	DOCUMENT NO. SD-74750-0030	SHEET NO. 2 OF 4	THIS DRAWING CONTAINS INFORMATION THAT IS PROPRIETARY TO MOLEX INCORPORATED AND SHOULD NOT BE USED WITHOUT WRITTEN PERMISSION																			

20 19 18 17 16 15 14 13 12 11 10 9 8 7 6 5 4 3 2 1

M L K J I H G F E D C B A


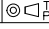
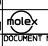


ENTER DESCRIPTION EC NO. 07475000-0440 DRAWN: CHIRSCY 2008/07/08 CHECKED: BRUSSELL 2007/01/10 APPROVED: MAHMOOD 2010/03/31 REV:	QUALITY SYMBOLS ▽=0 ▽=0	GENERAL TOLERANCES (UNLESS SPECIFIED) <table border="1"> <tr> <th></th> <th>mm</th> <th>INCH</th> </tr> <tr> <td>4 PLACES</td> <td>± 0.15</td> <td>± 0.005</td> </tr> <tr> <td>3 PLACES</td> <td>± 0.25</td> <td>± 0.010</td> </tr> <tr> <td>2 PLACES</td> <td>± 0.38</td> <td>± 0.015</td> </tr> <tr> <td>1 PLACE</td> <td>± 0.51</td> <td>± 0.020</td> </tr> <tr> <td colspan="3">ANGULAR ± 1 °</td> </tr> </table>		mm	INCH	4 PLACES	± 0.15	± 0.005	3 PLACES	± 0.25	± 0.010	2 PLACES	± 0.38	± 0.015	1 PLACE	± 0.51	± 0.020	ANGULAR ± 1 °			DRWNSHIP DRAWN BY: CHIRSCY 2007/01/10 CHECKED BY: BRUSSELL 2007/01/10 APPROVED BY: MAHMOOD 2010/03/31	DIMENSION STYLE MM ONLY	SCALE: 2:1 DESIGN UNITS: METRIC	THIRD ANGLE PROJECTION
		mm	INCH																					
	4 PLACES	± 0.15	± 0.005																					
	3 PLACES	± 0.25	± 0.010																					
2 PLACES	± 0.38	± 0.015																						
1 PLACE	± 0.51	± 0.020																						
ANGULAR ± 1 °																								
MOLEX INCORPORATED																								
DRAFT WHERE APPLICABLE MUST REMAIN WITHIN DIMENSIONS																								
SEE SHEET 1 THIS DRAWING CONTAINS INFORMATION THAT IS PROPRIETARY TO MOLEX INCORPORATED AND SHOULD NOT BE USED WITHOUT WRITTEN PERMISSION																								

19 18 17 16 15 14 13 12 11 10 9 8 7 6 5 4 3 2 1

M L K J I H G F E D C B A

DATE	REV	DESCRIPTION
2008/04/03	A	INITIAL RELEASE
2009/04/13	B	UPDATED VIEWS TO SHOW TOOLING CHANGES IN LIGHT PIPE CLIP AND CAGE (NO DIMENSIONS AFFECTED)

ENTER DESCRIPTION EC NO. US7200-0440 DRAWN BY CHIRSCY 2007/07/08 CHECKED BY BRUSSELL 2007/01/10 APPROVED BY RAHMOOD 2010/03/31 REV:	QUALITY SYMBOLS 	GENERAL TOLERANCES (UNLESS SPECIFIED) <table border="1"> <tr> <th></th> <th>mm</th> <th>INCH</th> </tr> <tr> <td>4 PLACES</td> <td>± 0.15</td> <td>± 0.005</td> </tr> <tr> <td>3 PLACES</td> <td>± 0.25</td> <td>± 0.010</td> </tr> <tr> <td>2 PLACES</td> <td>± 0.38</td> <td>± 0.015</td> </tr> <tr> <td>1 PLACE</td> <td>± 0.25</td> <td>± 0.010</td> </tr> <tr> <td>ANGULAR</td> <td colspan="2">± 1 °</td> </tr> </table>		mm	INCH	4 PLACES	± 0.15	± 0.005	3 PLACES	± 0.25	± 0.010	2 PLACES	± 0.38	± 0.015	1 PLACE	± 0.25	± 0.010	ANGULAR	± 1 °		DIMENSION STYLE MM ONLY	SCALE 1:1	DESIGN UNITS METRIC	 THIRD ANGLE PROJECTION
		mm	INCH																					
	4 PLACES	± 0.15	± 0.005																					
	3 PLACES	± 0.25	± 0.010																					
2 PLACES	± 0.38	± 0.015																						
1 PLACE	± 0.25	± 0.010																						
ANGULAR	± 1 °																							
DRAWN BY CHIRSCY DATE 2007/01/10 CHECKED BY BRUSSELL DATE 2007/01/10 APPROVED BY RAHMOOD DATE 2010/03/31	TITLE QSFP LIGHT PIPE ASSEMBLIES	MATERIAL NO. SEE SHEET 1	DOCUMENT NO. SD-74750-0030	SHEET NO. 4 OF 4																				
DRAFT WHERE APPLICABLE MUST REMAIN WITHIN DIMENSIONS		 MOLEX INCORPORATED																						
THIS DRAWING CONTAINS INFORMATION THAT IS PROPRIETARY TO MOLEX INCORPORATED AND SHOULD NOT BE USED WITHOUT WRITTEN PERMISSION																								