

Excellent Integrated System Limited

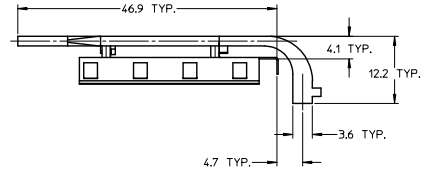
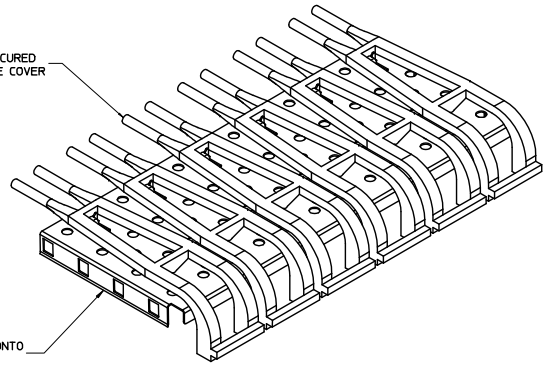
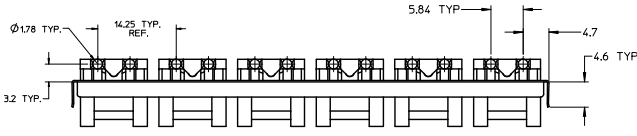
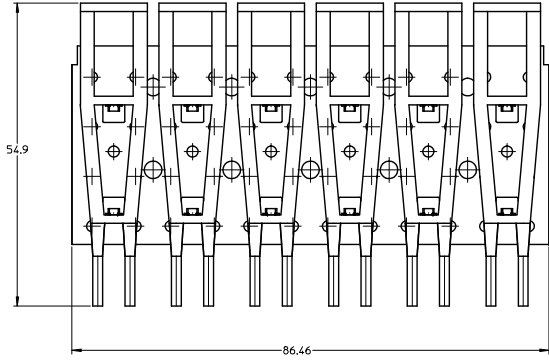
Stocking Distributor

Click to view price, real time Inventory, Delivery & Lifecycle Information:

[Molex Connector Corporation](#)
[0747540061](#)

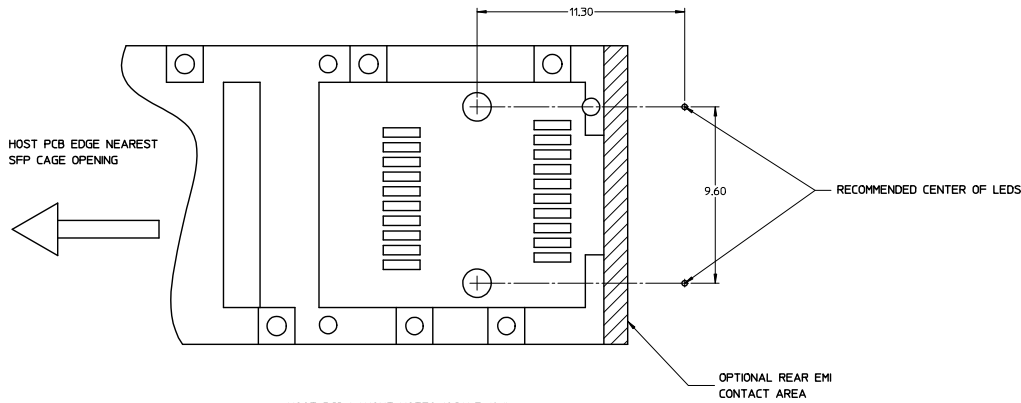
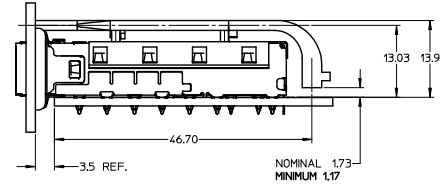
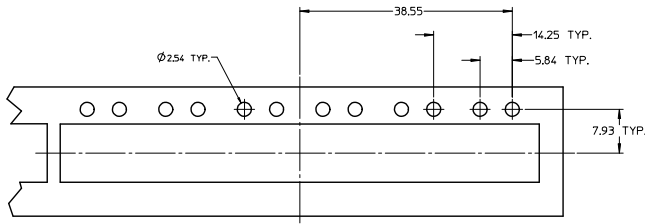
For any questions, you can email us directly:

sales@integrated-circuit.com



1. MATERIAL:
COVER: COPPER ALLOY
LIGHT PIPE: POLYCARBONATE (94-V0 RATED)
2. THIS LIGHT PIPE ASSEMBLY IS TO BE USED WITH THE SFP+ 1X6 CAGE ASSEMBLY P/N 7475406**
3. IT IS RECOMMENDED THAT THE CAGE BE PRESSED INTO OR SOLDERED TO THE PCB PRIOR TO ASSEMBLING THE LIGHT PIPE ASSEMBLY.
4. THIS PART MEETS THE RESTRICTION OF HAZARDOUS SUBSTANCES IN ELECTRICAL AND ELECTRONIC EQUIPMENT (RoHS) DIRECTIVE (2002/95/EC)

ENTER DESCRIPTION EC NO. 0747540061-013 DRAWN BY: JREEVES CHECKED BY: MA JOHNSTON APPROVED BY: K. JANOTA DATE: 2008/10/22 DATE: 2008/10/22 DATE: 2008/10/22	QUALITY SYMBOLS ▽=0 ▽=0	GENERAL TOLERANCES (UNLESS SPECIFIED): 4 PLACES ± 0.15 3 PLACES ± 0.15 2 PLACES ± 0.15 1 PLACE ± 0.25 ANGULAR ± 1°	DIMENSION STYLE MM ONLY	SCALE 3:1	DESIGN UNITS METRIC	THIRD ANGLE PROJECTION	
	DRAWN BY: JREEVES CHECKED BY: MA JOHNSTON APPROVED BY: K. JANOTA DATE: 2008/10/15 DATE: 2008/10/17 DATE: 2008/10/20	MATERIAL NO. 747540061	DOCUMENT NO. SD-74754-0061	TITLE SFP+ 1X6 LIGHT PIPE ASSY, LOW PROFILE - THRU BEZEL	MOLEX INCORPORATED	SHEET NO. 1 OF 3	SIZE D THIS DRAWING CONTAINS INFORMATION THAT IS PROPRIETARY TO MOLEX INCORPORATED AND SHOULD NOT BE USED WITHOUT WRITTEN PERMISSION
	DRAFT WHERE APPLICABLE MUST REMAIN WITHIN DIMENSIONS						
	MOLEX INCORPORATED						




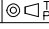
HOST PCB LAYOUT NOTES (SCALE 10:1)

1. LED SHOULD BE PLACED RELATIVE TO THE SFP CONNECTOR POST HOLES
2. LAYOUT APPLIES TO EACH PORT

ENTER DESCRIPTION EC NUMBER: 2008/10/22 DRAWN BY: JREEVES CHECKED BY: MAJOHNSTON APPROVED BY: K. JANOTA DATE: 2008/10/15 DATE: 2008/10/17 DATE: 2008/10/20	QUALITY SYMBOLS ▽=0 ▽=0	GENERAL TOLERANCES (UNLESS SPECIFIED) 4 PLACES ± 0.25 3 PLACES ± 0.25 2 PLACES ± 0.25 1 PLACE ± 0.25 ANGULAR ± 1°	DIMENSION STYLE MM ONLY	SCALE 3:1	DESIGN UNITS METRIC	THIRD ANGLE PROJECTION	
	DRAWN BY: JREEVES CHECKED BY: MAJOHNSTON APPROVED BY: K. JANOTA	DATE: 2008/10/15 DATE: 2008/10/17 DATE: 2008/10/20	MATERIAL NO: 747540061	DOCUMENT NO: SD-74754-0061	SHEET NO: 2 OF 3	MOLEX INCORPORATED	
	DRAFT WHERE APPLICABLE MUST REMAIN WITHIN DIMENSIONS						
	THIS DRAWING CONTAINS INFORMATION THAT IS PROPRIETARY TO MOLEX INCORPORATED AND SHOULD NOT BE USED WITHOUT WRITTEN PERMISSION						

20 19 18 17 16 15 14 13 12 11 10 9 8 7 6 5 4 3 2 1

DATE	REV	DESCRIPTION
2008/10/21	A	INITIAL RELEASE

ENTER DESCRIPTION EC NO. U57209-043 DRAWN BY: 2008/10/22 CHECKED BY: 2008/10/22 APPROVED BY: 2008/10/22 REV:	QUALITY SYMBOLS 	GENERAL TOLERANCES (UNLESS SPECIFIED)		DRWEN STYLE MM ONLY	SCALE 1:1	DESIGN UNITS METRIC	 THIRD ANGLE PROJECTION		
		4 PLACES ± 0.10 ± 0.004 3 PLACES ± 0.15 ± 0.005 2 PLACES ± 0.25 ± 0.008 1 PLACE ± 0.50 ± 0.015	mm INCH	DRAWN BY JREEVES	DATE 2008/10/15	TITLE SFP+ 1X6 LIGHT PIPE ASSY, LOW PROFILE - THRU BEZEL			
		ANGULAR ± 1 °	APPROVED BY K. JANOTA	DATE 2008/10/20	MOLEX INCORPORATED				
		DRAFT WHERE APPLICABLE MUST REMAIN WITHIN DIMENSIONS	MATERIAL NO. 747540061	DOCUMENT NO. SD-74754-0061	SHEET NO. 3 OF 3				

THIS DRAWING CONTAINS INFORMATION THAT IS PROPRIETARY TO MOLEX INCORPORATED AND SHOULD NOT BE USED WITHOUT WRITTEN PERMISSION

15:Frame_0_P_Alt_T Rev. E 2008/04/15 19 18 17 16 15 14 13 12 11 10 9 8 7 6 5 4 3 2 1