

Excellent Integrated System Limited

Stocking Distributor

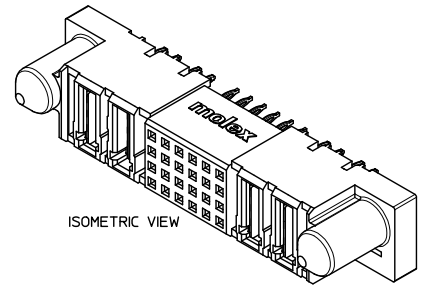
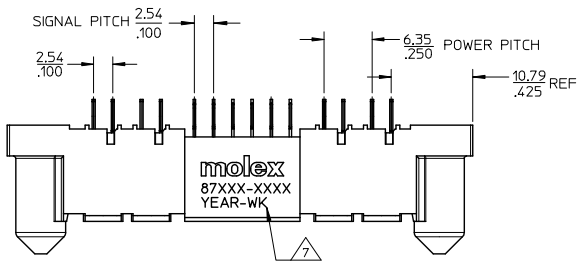
Click to view price, real time Inventory, Delivery & Lifecycle Information:

[Molex Connector Corporation](#)
[0876951001](#)

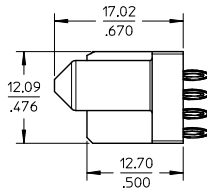
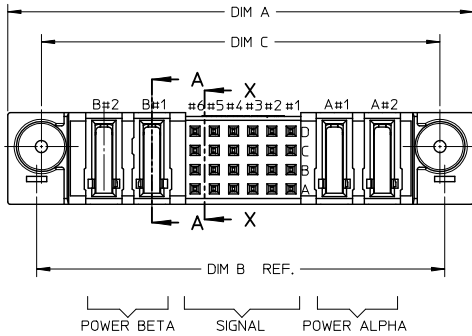
For any questions, you can email us directly:

sales@integrated-circuit.com

10 9 8 7 6 5 4 3 2 1



ISOMETRIC VIEW

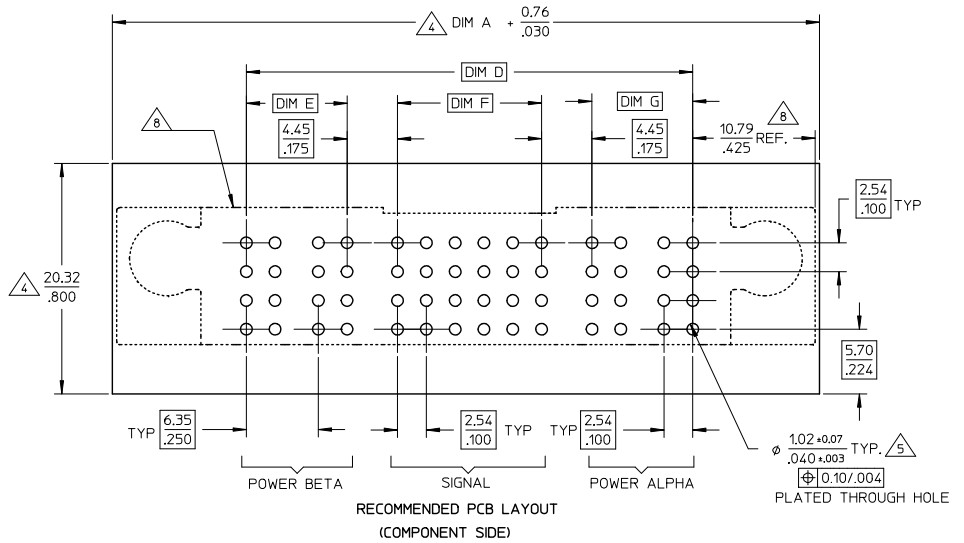
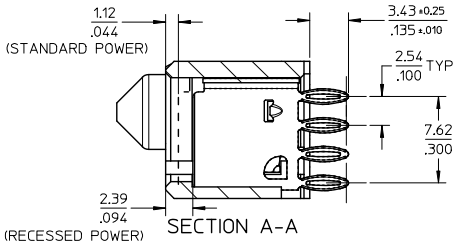
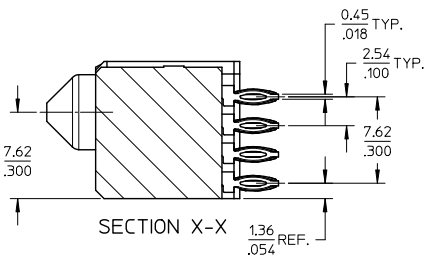


REVISED EC NO: S2014-0060 DRW:SKANG CHK:HLONG APPR:HLONG 2013/07/15 2013/09/06 2013/09/09	QUALITY SYMBOLS √=0 ∇=0 ∇=0	GENERAL TOLERANCES (UNLESS SPECIFIED)		DIMENSION STYLE MM/IN		SCALE NTS	DESIGN UNITS METRIC	THIRD ANGLE PROJECTION	
		4 PLACES ± --- ± ---	mm INCH	DRAWN BY KMG0H	DATE 2002/09/12	TITLE DPS CONNECTOR RECEPTACLE P(B)-S-P(A) CONFIG, VERTICAL PRESS-FIT			
		3 PLACES ± --- ± ---		CHECKED BY PTLIM	DATE 2002/11/21	molex			
		2 PLACES ± 0.13 ± --- 1 PLACE ± 0.25 ± --- 0 PLACE ± ±		APPROVED BY SKTOH	DATE 2002/11/21	MATERIAL NO. SEE TABLE	DOCUMENT NO. SD-87695-011	SHEET NO. 1 OF 3	
D1	DESCRIPTION REV	ANGULAR ± 3 ° DRAFT WHERE APPLICABLE MUST REMAIN WITHIN DIMENSIONS		THIS DRAWING CONTAINS INFORMATION THAT IS PROPRIETARY TO MOLEX INCORPORATED AND SHOULD NOT BE USED WITHOUT WRITTEN PERMISSION					

9 8 7 6 5 4 3 2 1

10 9 8 7 6 5 4 3 2 1

F
E
D
C
B
A



REVISED EC. NO. S2014-0060 DRAWN: SKANG 2013/07/15 CHK: CHILONG 2013/09/06 APPR: XILONG 2013/09/09 REV D1	QUALITY SYMBOLS ∇=0 ∇=0 ∇=0	GENERAL TOLERANCES (UNLESS SPECIFIED) 4 PLACES ± --- ± --- 3 PLACES ± --- ± --- 2 PLACES ± 0.13 ± --- 1 PLACE ± 0.25 ± --- 0 PLACE ± ±	DIMENSION STYLE MM/IN DRAWN BY: KMG0H DATE: 2002/09/12 CHECKED BY: PTLIM DATE: 2002/11/21 APPROVED BY: SKTOH DATE: 2002/11/21	SCALE: NTS DESIGN UNITS: METRIC THIRD ANGLE PROJECTION	TITLE: DPS CONNECTOR RECEPTACLE P(B)-S-P(A) CONFIG. VERTICAL PRESS-FIT molex	MATERIAL NO.: SEE TABLE DOCUMENT NO.: SD-87695-011 SHEET NO.: 2 OF 3
	ANGULAR ± 3° DRAFT WHERE APPLICABLE MUST REMAIN WITHIN DIMENSIONS		THIS DRAWING CONTAINS INFORMATION THAT IS PROPRIETARY TO MOLEX INCORPORATED AND SHOULD NOT BE USED WITHOUT WRITTEN PERMISSION			

9 8 7 6 5 4 3 2 1

10		9		8		7		6		5		4		3		2		1	
PART NUMBER	P-S-P CONFIGURATION			RECESSED POWER CIRCUIT	DIM A	DIM B	DIM C	DIM D	DIM E	DIM F	DIM G	PACKAGING							
	POWER BETA	SIGNAL	POWER ALPHA																
87695-1001	1	24	1	NIL	48.90 1.925	41.28 1.625	40.01 1.575	26.67 1.050	2.54 .100	12.70 .500	2.54 .100	TRAY							
87695-1007	1	24	1	B#1	48.90 1.925	41.28 1.625	40.01 1.575	26.67 1.050	2.54 .100	12.70 .500	2.54 .100	TRAY							
87695-1008	1	24	1	A#1	48.90 1.925	41.28 1.625	40.01 1.575	26.67 1.050	2.54 .100	12.70 .500	2.54 .100	TRAY							

CONNECTOR - NOTES

- MATERIALS :
 - HOUSING - HIGH TEMPERATURE THERMO-PLASTIC, GLASS FILLED, UL94-0,COLOR:BLACK.
 - POWER PIN - COPPER ALLOY
- PLATING :
 - POWER CONTACTS
 - 0.76 MICROMETER MINIMUM GOLD (Au) AT CONTACT AREA AND 2.54 MICROMETER MINIMUM TIN AT SOLDER TAIL AREA OVER 1.27um MIN. NICKEL (Ni) UNDERPLATE.
- PRODUCT SPECIFICATION: PS-87695-006.
- COMPONENT STAY AWAY ZONE FROM CONNECTOR.
- PCB NOTE FOR DIAMETER 1.02/.040 PLATED HOLE.
 - DRILLED HOLE SIZE IS 1.151/.0453
 - PLATE WITH 0.007/.0003 MINIMUM TIN OVER 0.03/.001 TO 0.08/.003 COPPER PLATING TO ACHIEVE 1.02±0.08/.040±.003 HOLE. SEE SHEET 2 FOR RECOMMENDED PCB LAYOUT.
- 2P(B)-24S-2P(A) CONFIGURATION IS SHOWN FOR ILLUSTRATION ONLY.
- MANUFACTURER LOGO,PART NUMBER AND YEAR-WEEK CODE.
- IMAGINARY LINE & DIMENSION TO POSITION AND PROVIDE CONNECTOR ORIENTATION W.R.T. TO PCB LAYOUT.

REVISED EC. NO: S2014-0060 2013/07/15 DRAWNSKANG 2013/09/06 CHYKCHLONG 2013/09/09 APPR:HALONG D1 REV	QUALITY SYMBOLS	GENERAL TOLERANCES (UNLESS SPECIFIED)	DIMENSION STYLE	SCALE	DESIGN UNITS	THIRD ANGLE PROJECTION																																																							
	$\nabla=0$ $\nabla=0$ $\nabla=0$	<table border="1"> <tr><th colspan="2">mm</th><th colspan="2">INCH</th></tr> <tr><td>4 PLACES</td><td>± ---</td><td>± ---</td><td>± ---</td></tr> <tr><td>3 PLACES</td><td>± ---</td><td>± ---</td><td>± ---</td></tr> <tr><td>2 PLACES</td><td>± 0.13</td><td>± ---</td><td>± ---</td></tr> <tr><td>1 PLACE</td><td>± 0.25</td><td>± ---</td><td>± ---</td></tr> <tr><td>0 PLACE</td><td>±</td><td>±</td><td>±</td></tr> </table>	mm		INCH		4 PLACES	± ---	± ---	± ---	3 PLACES	± ---	± ---	± ---	2 PLACES	± 0.13	± ---	± ---	1 PLACE	± 0.25	± ---	± ---	0 PLACE	±	±	±	<table border="1"> <tr><th colspan="2">MM/IN</th></tr> <tr><td>DRAWN BY</td><td>DATE</td></tr> <tr><td>KMGOH</td><td>2002/09/12</td></tr> <tr><td>CHECKED BY</td><td>DATE</td></tr> <tr><td>PTLIM</td><td>2002/11/21</td></tr> <tr><td>APPROVED BY</td><td>DATE</td></tr> <tr><td>SKTOH</td><td>2002/11/21</td></tr> </table>	MM/IN		DRAWN BY	DATE	KMGOH	2002/09/12	CHECKED BY	DATE	PTLIM	2002/11/21	APPROVED BY	DATE	SKTOH	2002/11/21	<table border="1"> <tr><th colspan="2">TITLE</th></tr> <tr><td colspan="2">DPS CONNECTOR RECEPTACLE P(B)-S-P(A) CONFIG. VERTICAL PRESS-FIT</td></tr> </table>	TITLE		DPS CONNECTOR RECEPTACLE P(B)-S-P(A) CONFIG. VERTICAL PRESS-FIT		<table border="1"> <tr><th colspan="2">MATERIAL NO.</th></tr> <tr><td colspan="2">SEE TABLE</td></tr> </table>	MATERIAL NO.		SEE TABLE		<table border="1"> <tr><th colspan="2">DOCUMENT NO.</th></tr> <tr><td colspan="2">SD-87695-011</td></tr> </table>	DOCUMENT NO.		SD-87695-011		<table border="1"> <tr><th colspan="2">SHEET NO.</th></tr> <tr><td colspan="2">3 OF 3</td></tr> </table>	SHEET NO.		3 OF 3	
	mm		INCH																																																										
	4 PLACES	± ---	± ---	± ---																																																									
3 PLACES	± ---	± ---	± ---																																																										
2 PLACES	± 0.13	± ---	± ---																																																										
1 PLACE	± 0.25	± ---	± ---																																																										
0 PLACE	±	±	±																																																										
MM/IN																																																													
DRAWN BY	DATE																																																												
KMGOH	2002/09/12																																																												
CHECKED BY	DATE																																																												
PTLIM	2002/11/21																																																												
APPROVED BY	DATE																																																												
SKTOH	2002/11/21																																																												
TITLE																																																													
DPS CONNECTOR RECEPTACLE P(B)-S-P(A) CONFIG. VERTICAL PRESS-FIT																																																													
MATERIAL NO.																																																													
SEE TABLE																																																													
DOCUMENT NO.																																																													
SD-87695-011																																																													
SHEET NO.																																																													
3 OF 3																																																													
DRAFT WHERE APPLICABLE WITHIN DIMENSIONS		ANGULAR ± 3 °		THIS DRAWING CONTAINS INFORMATION THAT IS PROPRIETARY TO MOLEX INCORPORATED AND SHOULD NOT BE USED WITHOUT WRITTEN PERMISSION																																																									