

Excellent Integrated System Limited

Stocking Distributor

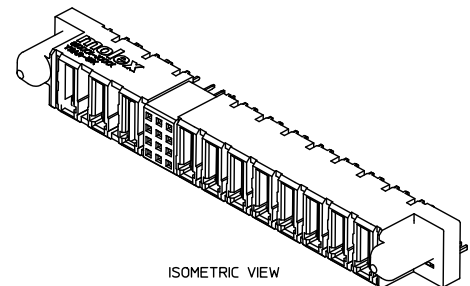
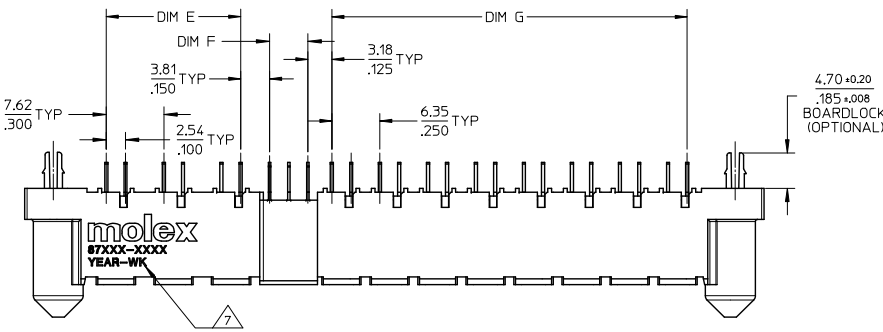
Click to view price, real time Inventory, Delivery & Lifecycle Information:

[Molex Connector Corporation](#)
[0877342000](#)

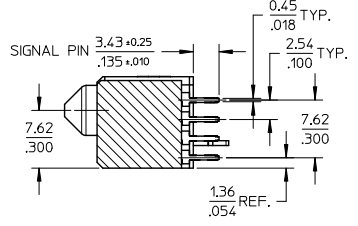
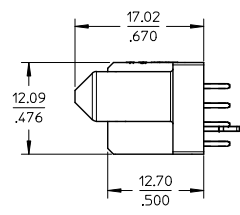
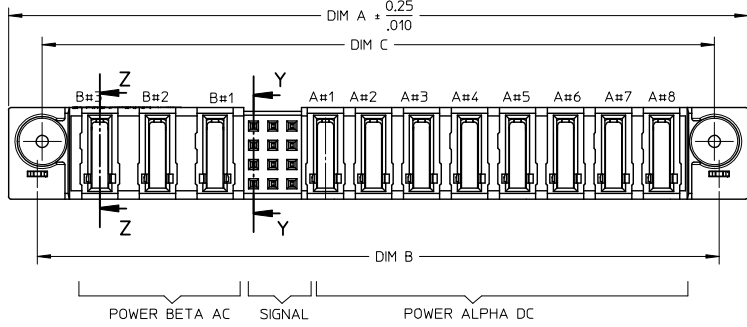
For any questions, you can email us directly:

sales@integrated-circuit.com

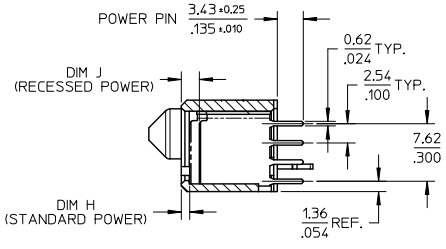
10 9 8 7 6 5 4 3 2 1



ISOMETRIC VIEW



SECTION Y-Y

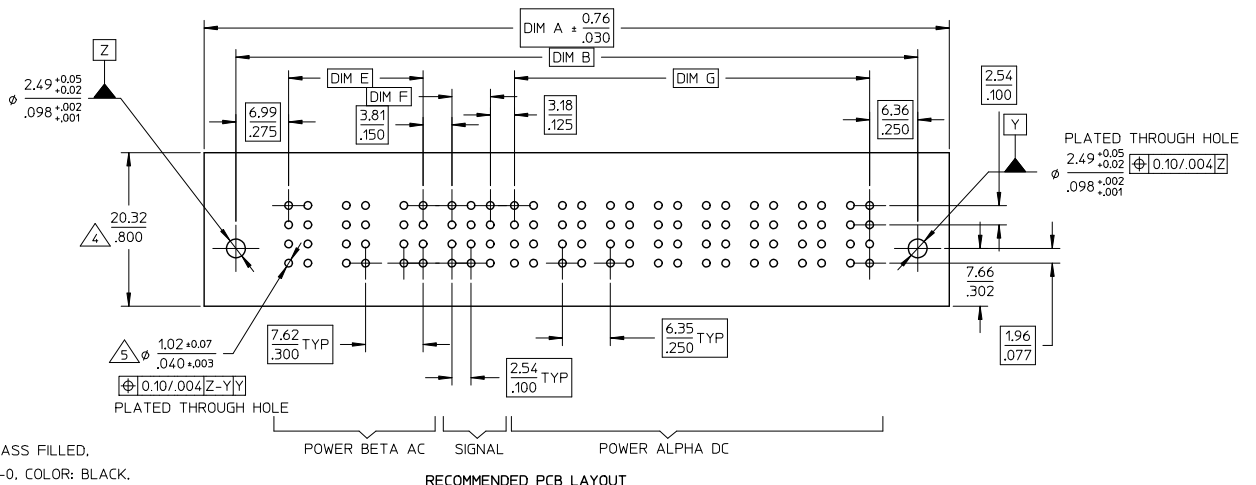


SECTION Z-Z

REVISED IEC NO. S2014-0060 2013/07/18 DRW:SKANG 2013/09/06 CHK:HLONG 2013/09/09 APPR:HLONG	QUALITY SYMBOLS	GENERAL TOLERANCES (UNLESS SPECIFIED)		DIMENSION STYLE		SCALE	DESIGN UNITS	THIRD ANGLE PROJECTION
	$\nabla=0$ $\nabla=0$ $\nabla=0$	4 PLACES ± --- ± --- 3 PLACES ± --- ± .005 2 PLACES ± 0.13 ± .010 1 PLACE ± 0.25 ± --- 0 PLACE ± ±	mm	INCH	MM/IN	NTS	METRIC	
	DRAWN BY BHL0W 2004/02/18 CHECKED BY KCLING 2004/03/03 APPROVED BY PTLIM 2004/03/15	MATERIAL NO. SEE TABLE SIZE A3	TITLE DC/AC POWER RECEPTACLE P(A)DC-S-P(B)AC CONFIG. VERTICAL T/H, BOARD-LOCK	DOCUMENT NO. SD-87734-020	SHEET NO. 1 OF 2			
	DRAFT WHERE APPLICABLE WITHIN DIMENSIONS					THIS DRAWING CONTAINS INFORMATION THAT IS PROPRIETARY TO MOLEX INCORPORATED AND SHOULD NOT BE USED WITHOUT WRITTEN PERMISSION		

10 9 8 7 6 5 4 3 2 1

PART NUMBER	P-S-P CONFIGURATION			RECESSED POWER CIRCUIT #	DIM A	DIM B	DIM C	DIM D	DIM E	DIM F	DIM G	DIM H STANDARD	DIM J RECESSED	BOARDLOCK OPITON	PACKAGING
	POWER BETA AC	SIGNAL	POWER ALPHA DC												
87734-2000	3	12	8	ALL EXCEPT B1.	97.79 3.850	90.17 3.550	88.90 3.500	74.30 2.925	17.78 .700	5.08 .200	46.99 1.850	1.12 .044	2.39 .094	NIL	TRAY
87734-2001	3	12	8	ALL EXCEPT B1.	97.79 3.850	90.17 3.550	88.90 3.500	74.30 2.925	17.78 .700	5.08 .200	46.99 1.850	1.12 .044	2.39 .094	YES	TRAY



CONNECTOR - NOTES

- MATERIALS :
HOUSING - LCP, GLASS FILLED, UL 94V-0, COLOR: BLACK.
POWER PIN - COPPER ALLOY
- PLATING :
POWER CONTACTS
0.76 MICROMETER MINIMUM GOLD (Au) AT CONTACT AREA AND
2.54 MICROMETER MINIMUM TIN AT SOLDER TAIL AREA
OVER 1.27um MIN. NICKEL (Ni) UNDERPLATE.
- PRODUCT SPECIFICATION: PS-87663-006.
COMPONENT STAY AWAY ZONE FROM CONNECTOR.
PCB NOTE FOR DIAMETER 1.02/.040 PLATED HOLE.
- DRILLED HOLE SIZE IS 1.151/.0453
- PLATE WITH 0.007/.0003 MINIMUM TIN OVER 0.03/.001 TO 0.08/.003 COPPER PLATING TO ACHIEVE 1.02+0.08/.040+.003 HOLE. SEE SHEET 2 FOR RECOMMENDED PCB LAYOUT.
- 4P(B)-24S-3P(A) CONFIGURATION IS SHOWN FOR ILLUSTRATION ONLY.
MANUFACTURER LOGO, PART NUMBER AND YEAR-WEEK CODE.
- IMAGINARY LINE & DIMENSION TO POSITION AND PROVIDE CONNECTOR ORIENTATION W.R.T. TO PCB LAYOUT.

REVISED EC. NO. S2014-0060 2013/07/18 DRW:SKANG 2013/09/06 CHK:CHALONG 2013/09/09 APPR:HLONG REV D1	QUALITY SYMBOLS	GENERAL TOLERANCES (UNLESS SPECIFIED)	DIMENSION STYLE	SCALE	DESIGN UNITS	THIRD ANGLE PROJECTION	
	▽=0	4 PLACES ± --- ± ---	MM/IN	NTS	METRIC	⊙	
	▽=0	3 PLACES ± --- ± .005	DRAWN BY	DATE	TITLE		
	▽=0	2 PLACES ± 0.13 ± .010	BHLOW	2004/02/18	DC/AC POWER RECEPTACLE P(A)DC-S-P(B)AC CONFIG. VERTICAL T/H, BOARD-LOCK		
		1 PLACE ± 0.25 ± ---	CHECKED BY	DATE			
		0 PLACE ± ±	KCLING	2004/03/03			
		ANGULAR ± 3 °	APPROVED BY	DATE			
		DRAFT WHERE APPLICABLE	PTLIM	2004/03/15			
		MUST REMAIN WITHIN DIMENSIONS	MATERIAL NO.	DOCUMENT NO.			
			SEE TABLE	SD-87734-020			
			SIZE				
			A3				
			THIS DRAWING CONTAINS INFORMATION THAT IS PROPRIETARY TO MOLEX INCORPORATED AND SHOULD NOT BE USED WITHOUT WRITTEN PERMISSION				