

Excellent Integrated System Limited

Stocking Distributor

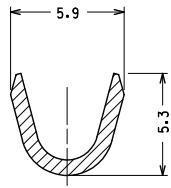
Click to view price, real time Inventory, Delivery & Lifecycle Information:

[Molex Connector Corporation](#)
[0940306980](#)

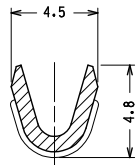
For any questions, you can email us directly:

sales@integrated-circuit.com

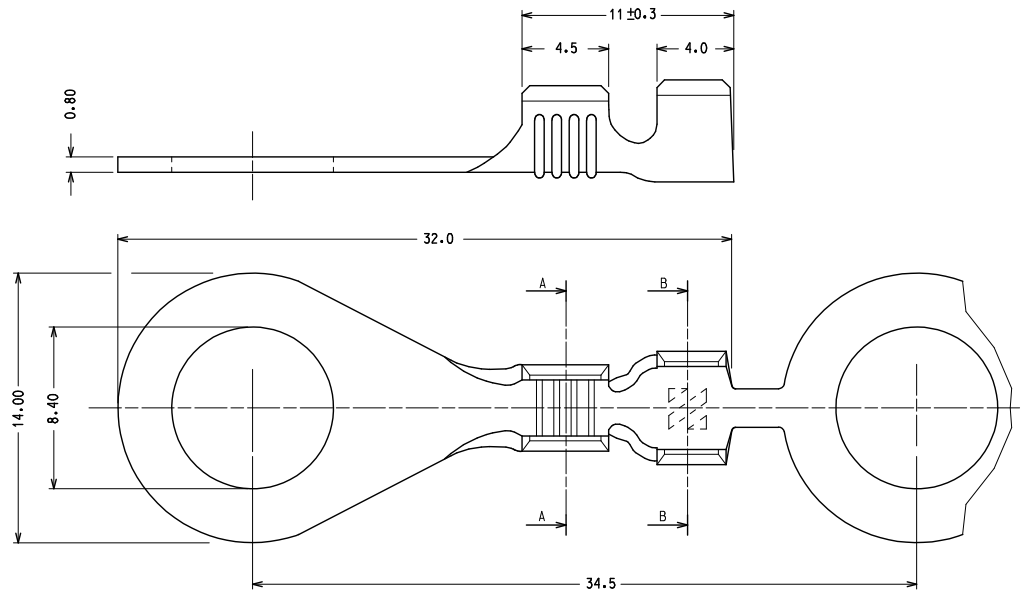
10 9 8 7 6 5 4 3 2 1



SECTION B - B



SECTION A - A



MATERIALE: OTTONE FINITURA: STAGNATO

MATERIAL: BRASS PLATING: TIN

S.P.Q. = 6000 pz.

Std. Descr.: RING TONGUE TERM BRS TIN 8.4 D 2-2.5

EC NO.: Z2016-0113 DRAWN: SANTISS 2016/06/09 CHKD: SANTISS 2016/06/09 APPR: PZANDI/ROLANI 2016/06/09	QUALITY SYMBOLS	GENERAL TOLERANCES (UNLESS SPECIFIED)		DIMENSION STYLE		SCALE	DESIGN UNITS	FIRST ANGLE PROJECTION
	▼=0	mm	INCH	MM ONLY		5:1	METRIC	
	▽=0	4 PLACES ± --- ± ---	3 PLACES ± --- ± ---	DRAWN BY	DATE	TITLE		
		2 PLACES ± 0.1 ± ---	1 PLACE ± 0.2 ± ---	FGOTTARD	1990/02/27	RING TONGUE TERMINAL WIRE RANGE: 1.0-2.5 MMQ		
		ANGULAR ± 2 °	APPROVED BY	DATE	MOLEX INCORPORATED			
			MATERIAL NO.	94030-6980	DOCUMENT NO.	SD-94030-060		SHEET NO.
			DRAFT WHERE APPLICABLE MUST REMAIN WITHIN DIMENSIONS		THIS DRAWING CONTAINS INFORMATION THAT IS PROPRIETARY TO MOLEX INCORPORATED AND SHOULD NOT BE USED WITHOUT WRITTEN PERMISSION			1 OF 1

9 8 7 6 5 4 3 2 1