

Excellent Integrated System Limited

Stocking Distributor

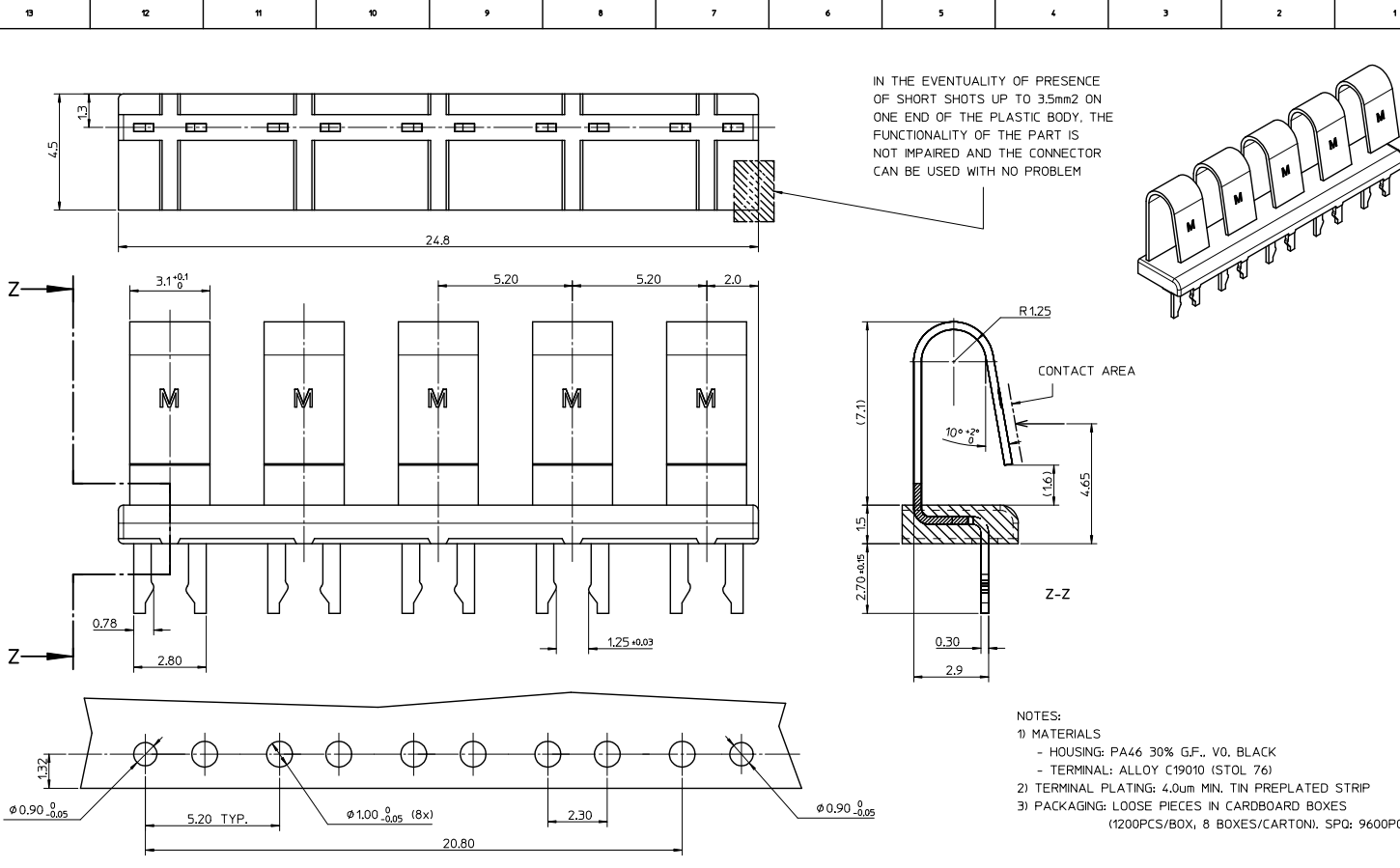
Click to view price, real time Inventory, Delivery & Lifecycle Information:

[Molex Connector Corporation](#)

[0942341005](#)

For any questions, you can email us directly:

sales@integrated-circuit.com



- NOTES:
- 1) MATERIALS
- HOUSING: PA46 30% G.F., V0, BLACK
- TERMINAL: ALLOY C19010 (STOL 76)
 - 2) TERMINAL PLATING: 4.0um MIN. TIN PREPLATED STRIP
 - 3) PACKAGING: LOOSE PIECES IN CARDBOARD BOXES
(1200PCS/BOX, 8 BOXES/CARTON). SPO: 9600PCS

RECOMMENDED PCB LAYOUT (PCB THICKNESS: 1.5mm)

3D models used:
- EM-94324-001
- EM-94234-040

IEC NO: Z2013-0173 DRAWN: SBARBIER 2013/01/07 CHECKED: SANTUSSO 2013/07/12 APPROVED: SELLO 2013/06/18	QUALITY SYMBOLS	GENERAL TOLERANCES (UNLESS SPECIFIED)	DIMENSION STYLE	SCALE	DESIGN UNITS	THIRD ANGLE PROJECTION
	▽=0	mm INCH	MM ONLY	10:1	METRIC	
	▽=0	4 PLACES ±--- ±---	DRAWN BY DATE	TITLE		
	▽=0	3 PLACES ±--- ±---	SBARBIER 2013/01/07	5 CKT SERIAL CONNECTOR		
	2 PLACES ±0.05 ±---	CHECKED BY DATE				
	1 PLACE ±0.10 ±---	APPROVED BY DATE				
	0 PLACE ±--- ±---	FBISELLO 2013/06/18	MATERIAL NO.	DOCUMENT NO.	SHEET NO.	
	ANGULAR ±---°		94234-1005	SD-94234-010	1 OF 1	
	DRAFT WHERE APPLICABLE MUST REMAIN WITHIN DIMENSIONS		THIS DRAWING CONTAINS INFORMATION THAT IS PROPRIETARY TO MOLEX INCORPORATED AND SHOULD NOT BE USED WITHOUT WRITTEN PERMISSION			