

## Excellent Integrated System Limited

Stocking Distributor

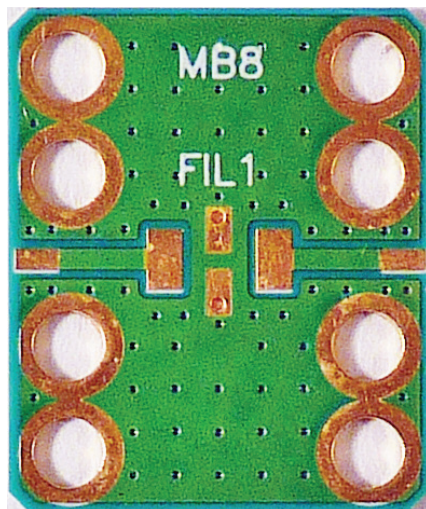
Click to view price, real time Inventory, Delivery & Lifecycle Information:

[Twin Industries](#)

[MB-8](#)

For any questions, you can email us directly:

[sales@integrated-circuit.com](mailto:sales@integrated-circuit.com)

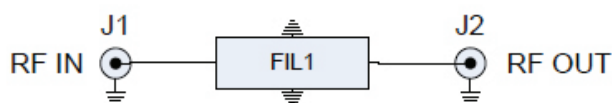


#### FEATURES

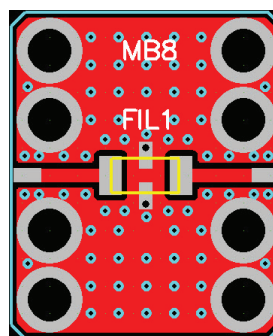
- Fits Mini-Circuits LFCN, HFCN, and BFCN filters in FV1206 package
- Lowpass, highpass, bandpass filters
- Many filters to choose from
- RO-4350 board material
- Fits MicroAmp MH-series housings

The MicroAmp MB-8 circuit board is designed for rapid prototyping of microwave filters using the Mini-Circuits line of LFCN, HFCN, and BFCN components in the FV1206 package. Filters from under 100 MHz to over 6 GHz can be quickly fabricated in lowpass, highpass, or bandpass configurations. In addition, the MB-8 can be used to insert a series element with a standard 1206 surface mount package such as a DC blocking capacitor or series resistor. This board will fit the MicroAmp MH series of connectorized housings that allow it to be used as a single passive network or cascaded with other MicroAmp boards for added versatility. Boards are fabricated from a high-performance 13 mil thick RO-4350 laminate with RoHS compatible ENIG plating (electroless nickel/immersion gold) on both the component side and the solid bottom ground plane. The board measures 0.490" x 0.590" and mounts into the housing with four or eight #1-72 screws. Mounting screws closer to the traces allow for better grounding with higher frequency filters. Pads for the RF connectors allow the SMA center pins to be easily soldered to the board after it is installed into the housing.

REF	SIZE	FUNCTION
FIL1	FV1206/1206	Filter or passive
J1		Input
J2		Output



FILTER SCHEMATIC



ASSEMBLY