

## **Excellent Integrated System Limited**

Stocking Distributor

Click to view price, real time Inventory, Delivery & Lifecycle Information:

[Phoenix Contact](#)  
[2911676](#)

For any questions, you can email us directly:

[sales@integrated-circuit.com](mailto:sales@integrated-circuit.com)



Extract from the online catalog

## ST-OE2- 5DC/ 48DC/100

This product has been replaced by a newer version.

Order No.: 2911676



<http://eshop.phoenixcontact.de/phoenix/treeViewClick.do?UID=2911676>

Pluggable input optocoupler, with light indicator and protection circuits in the input and output circuits, input: 5 V DC, output: 8 - 48 V DC/ max. 100 mA, can be plugged on basic termination blocks

### Commercial data

EAN	4017918079697
Pack	10 Pcs.
Customs tariff	85364190
Weight/Piece	0.02236 KG
Catalog page information	Page 93 (IF-2005)

<http://www.download.phoenixcontact.com>  
Please note that the data given here has been taken from the online catalog. For comprehensive information and data, please refer to the user documentation. The General Terms and Conditions of Use apply to Internet downloads.

### Technical data

#### Input data

Nominal input voltage $U_N$	5 V DC $\pm$ 10%
Switching threshold "0" signal in reference to $U_N$	$\leq$ 0.4
Switching threshold "1" signal in reference to $U_N$	$\geq$ 0.8
Typical input current at $U_N$	12 mA
Typical response time	20 $\mu$ s

ST-OE2- 5DC/ 48DC/100 Order No.: 2911676

<http://eshop.phoenixcontact.de/phoenix/treeViewClick.do?UID=2911676>

Typical turn-off time	100 µs
Status display	Yellow LED
Name of protection	Polarity protection
	Surge protection
Protective circuit/component	Polarity protection diode
	RC element
Transmission frequency	500 Hz

**Output data**

Output nominal voltage range	8 V DC ... 48 V DC
Limiting continuous current	100 mA
Voltage drop at max. limiting continuous current	0.9 V
Output circuit	2-conductor floating
Name of protection	Polarity protection
	Surge protection
Protective circuit/component	Polarity protection diode

**General data**

Length	33 mm
Width	14.6 mm
Height	66.5 mm
Test voltage input/output	2.5 kV AC
Ambient temperature (operation)	-20 °C ... 60 °C
Mounting position	Any
Standards/regulations	DIN VDE 0110

**Certificates / Approvals**

Approval logo



**requested approbations**

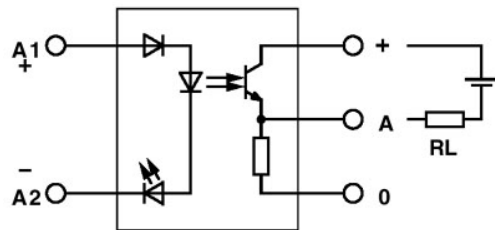
Certification	GOST
---------------	------

ST-OE2- 5DC/ 48DC/100 Order No.: 2911676

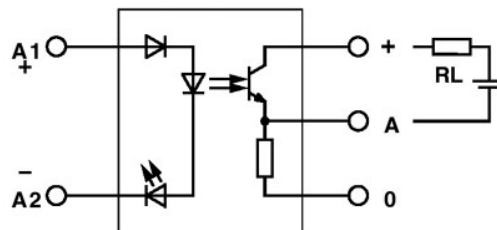
<http://eshop.phoenixcontact.de/phoenix/treeViewClick.do?UID=2911676>

## Drawings

### Circuit diagram



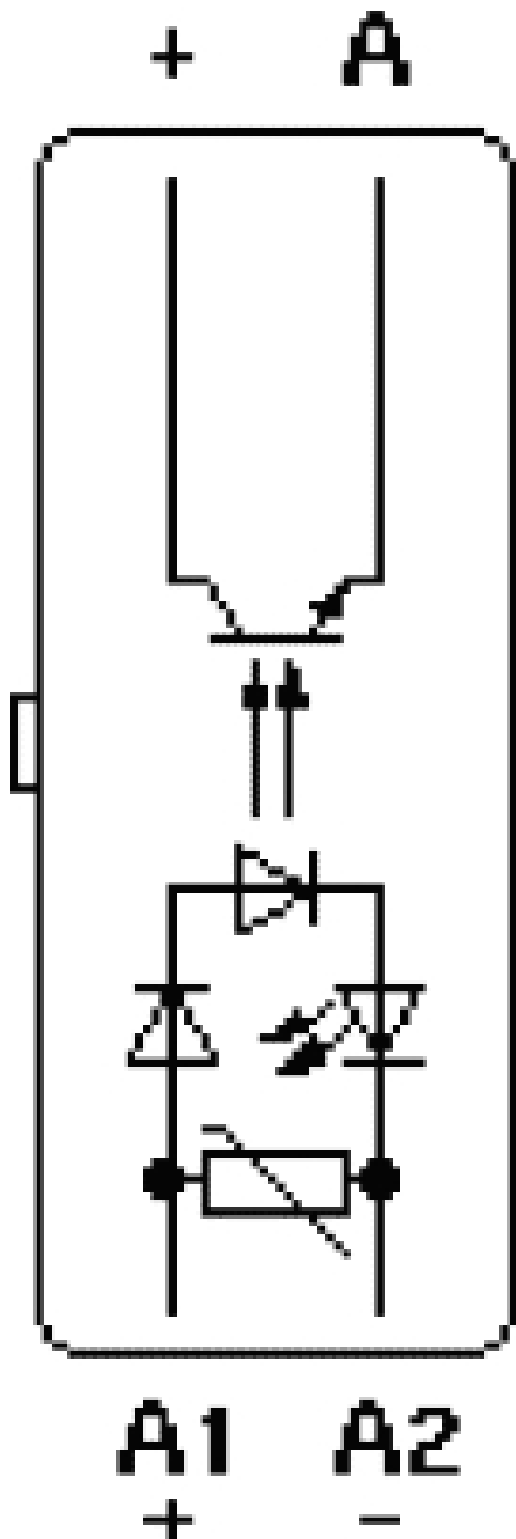
Output: 2-wire, floating, plus switching



Output: 2-wire, floating, minus switching

ST-OE2- 5DC/ 48DC/100 Order No.: 2911676

<http://eshop.phoenixcontact.de/phoenix/treeViewClick.do?UID=2911676>



ST-OE2- 5DC/ 48DC/100 Order No.: 2911676

<http://eshop.phoenixcontact.de/phoenix/treeViewClick.do?UID=2911676>

---

**Address**

PHOENIX CONTACT GmbH & Co. KG  
Flachsmarktstr. 8  
32825 Blomberg, Germany  
Phone +49 5235 3 00  
Fax +49 5235 3 41200  
<http://www.phoenixcontact.de>



© 2008 Phoenix Contact  
Technical modifications reserved;