

Excellent Integrated System Limited

Stocking Distributor

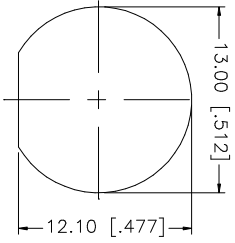
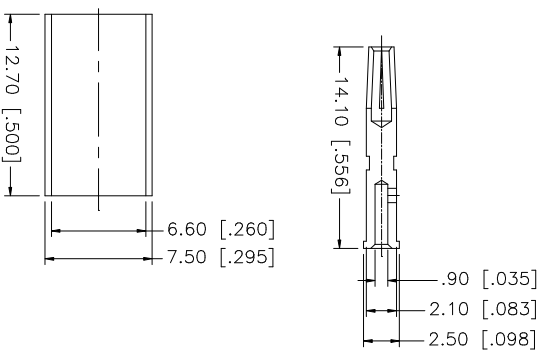
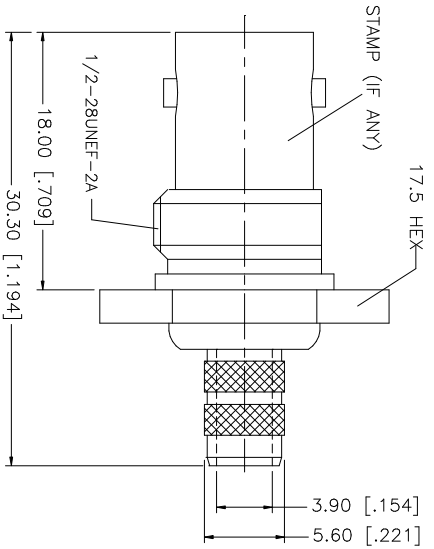
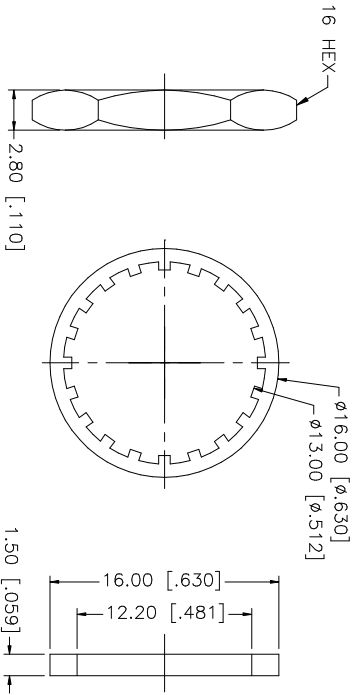
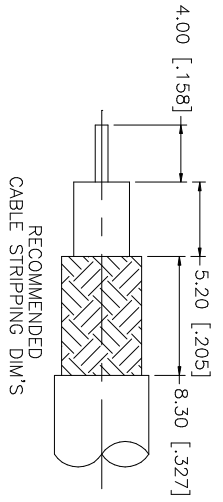
Click to view price, real time Inventory, Delivery & Lifecycle Information:

[Amphenol RF](#)
[112630](#)

For any questions, you can email us directly:

sales@integrated-circuit.com

REV.	DATE	DESCRIPTION
NC	06/31/06	INITIAL RELEASE



RECOMMENDED
MOUNTING HOLE

CRIMP NOTES:

1. CRIMPED FERRULE HEX. CRIMP SIZE .255"
2. CRIMPED CONTACT PIN HEX. CRIMP SIZE .068"
3. MAX. PANEL THICKNESS = 3.5mm

DESCRIPTION	MATERIAL	FINISH	QTY	DO NOT SCALE DRAWING	APPROVALS	DATE	PART DESCRIPTION	DWG. NO.	REV.	NC	SIZE	SCALE	
8 FERRULE	COPPER	NICKEL	1	UNLESS OTHERWISE SPECIFIED DIMENSIONS ARE IN MILLIMETERS. DIMENSIONS IN () ARE IN INCHES AND FOR CUSTOMER REFERENCE ONLY. UNLESS OTHERWISE SPECIFIED, TOLERANCES FOR MILLIMETERS ARE: 0.5 - 30mm ± 0.20mm 8 - 30mm ± 0.40mm 30 - 120mm ± 0.50mm UNLESS OTHERWISE SPECIFIED TOLERANCES FOR INCHES ARE: .020 - .315 = ± 0.007" .315 - 1.180 = ± 0.015" 1.180 - 4.724 = ± 0.020"									
7 HEX NUT	BRASS	NICKEL	1										
6 LOCK WASHER	BRASS	NICKEL	1										
5 GASKET	RUBBER	RED	1										
4 CONTACT PIN	PHOS. BRONZE	GOLD	1										
3 INSULATOR	TEFLON	NATURAL	1										
2 BODY	BRASS	NICKEL	1										
DESCRIPTION	MATERIAL	FINISH	QTY										
CAD FILE C:/112/112630.DWG					DRAWN G.R.S. 06/31/06		BNC BULKHEAD CRIMP JACK (20 AWG CENTER CONTACT)		112630		SCALE NA		
					CHECKED		Amphenol Connex						
					ISSUED								
					SHEET 1 OF 1								
					PART NO.								