

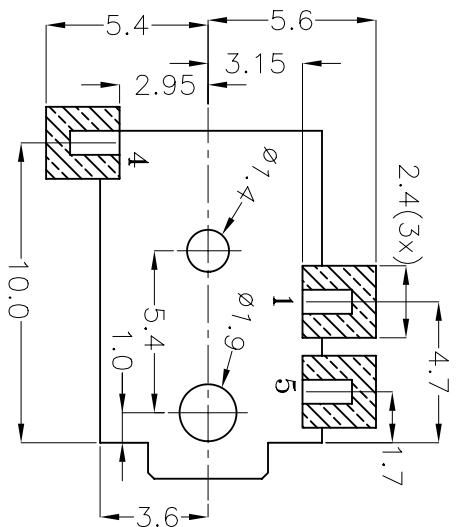
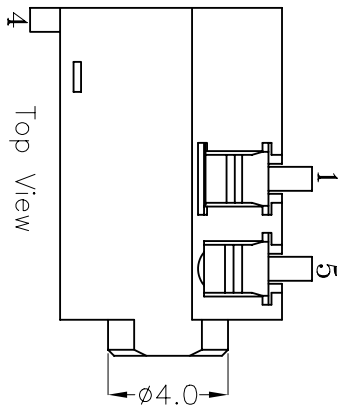
## Excellent Integrated System Limited

Stocking Distributor

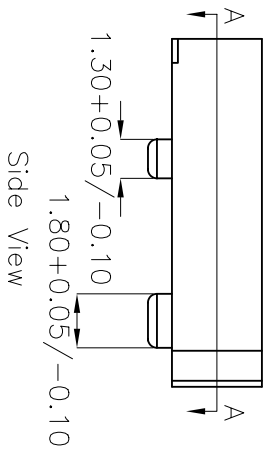
Click to view price, real time Inventory, Delivery & Lifecycle Information:

[CUI Inc.](#)  
[SJ-2533-SMT](#)

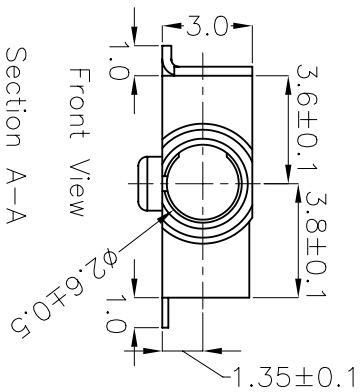
For any questions, you can email us directly:  
[sales@integrated-circuit.com](mailto:sales@integrated-circuit.com)



PCB Pad Layout  
Top View

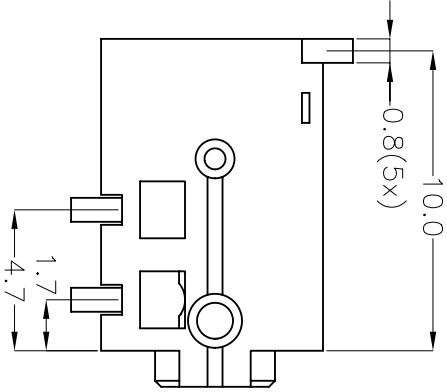


Side View

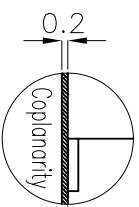


Front View

Section A-A

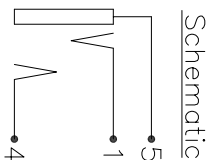


Bottom View

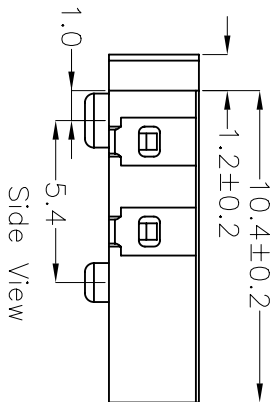


Mounting Surface

- Specifications:
1. Rated Voltage – 16 VDC
  2. Rated Current – 300 mA
  3. Contact Resistance – 100 mOHMS or less under all conditions, including After Life Testing.
  4. Insulation Resistance – 100 MOHMS or greater at 250 VDC.
  5. Dielectric Withstand Voltage – 250 VAC RMS for 1 minute.



Schematic



Side View

Term	Material	Color	Plating	Remark
Plastic Housing <P1>	Polyamide	Black		UL94V-0 Rated
Ring Contact <M1>	Ti-Cu Alloy		Gold Flash	20T
Tip Contact <M4>	Ti-Cu Alloy		Gold Flash	20T
Ground <M5>	Ti-Cu Alloy		Gold Flash	20T



**CUI STACK**

9615 SW Allen, Suite 103  
 Beaverton, OR 97005  
 Phone: (503) 643-4899  
 800-275-4899  
 Fax: (503) 643-6129  
 Website: www.cuistack.com

TITLE: **2.5 $\phi$  Surface Mount Jack – Stereo**

PART NO. SJ-2533-SMT UNITS: Millimeters

DRAWN BY: Todd R. White APPROVED BY: SCALE: 4x

PC FILE NAME: SJ-2533-SMT.DWG COPYRIGHT 2000 BY CUI STACK, INC.