

Excellent Integrated System Limited

Stocking Distributor

Click to view price, real time Inventory, Delivery & Lifecycle Information:

[Honeywell Sensing and Productivity Solutions](#)
[105ML1-E1](#)

For any questions, you can email us directly:

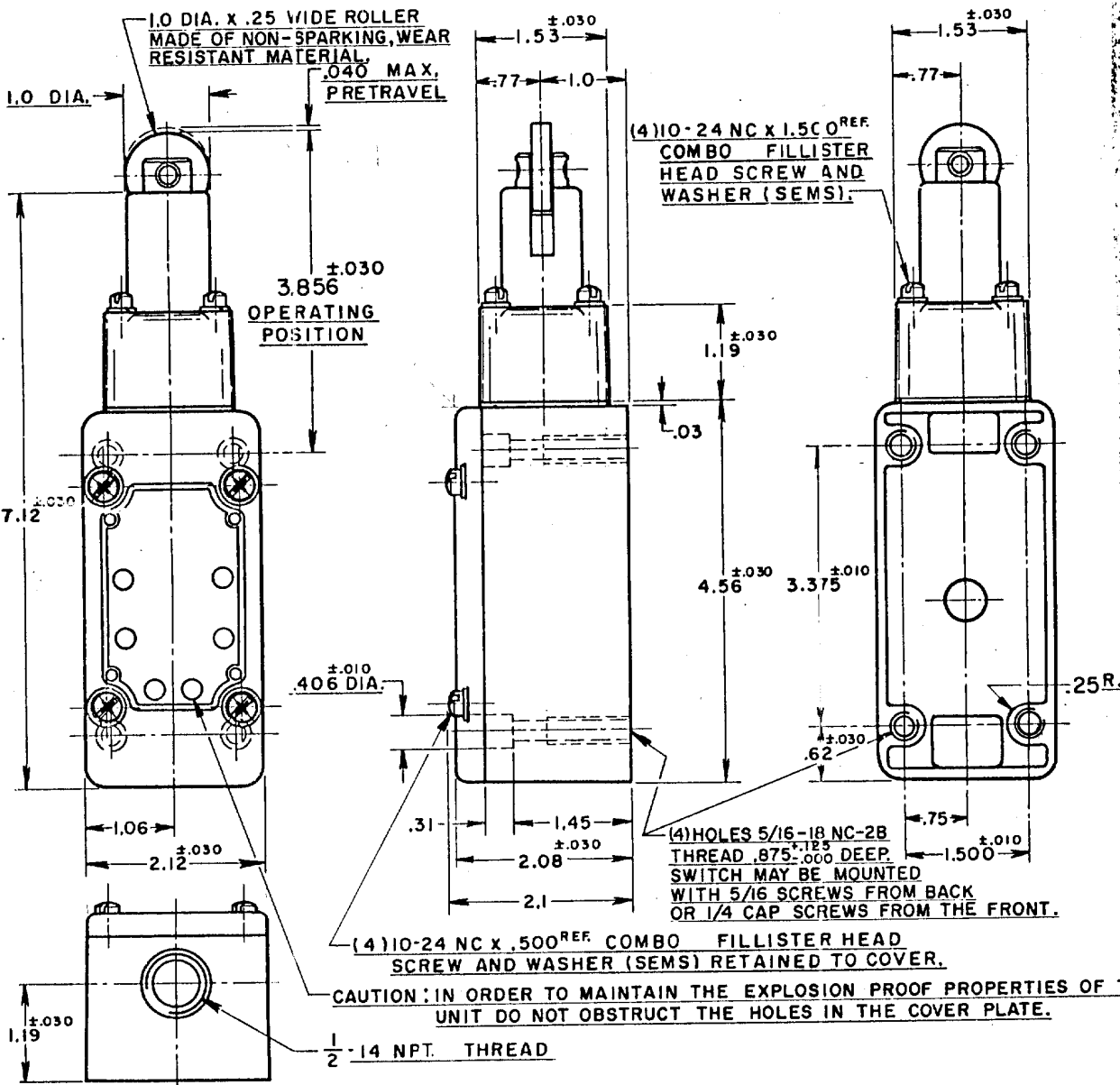
sales@integrated-circuit.com

MICRO SWITCH

A DIVISION OF MINNEAPOLIS-HONEYWELL REGULATOR COMPANY
 FREEPORT, ILLINOIS
 FED. MFR. CODE 91929

SWITCH - ENCLOSED

105ML1-E1



THIS DRAWING COVERS A PROPRIETARY ITEM AND IS THE PROPERTY
 OF MICRO SWITCH, A DIVISION OF HONEYWELL. THIS DRAWING IS NOT
 TO BE COPIED OR USED WITHOUT THE APPROVAL OF MICRO SWITCH.

NOTE-

- 1- ROLLER ASSEMBLY MAY BE RE-ASSEMBLED 90° FROM POSITION SHOWN.
- 2- IT IS ESSENTIAL THAT THE CONDUIT OPENING BE PROPERLY SEALED IN ORDER TO MAINTAIN THE EXPLOSION PROOF PROPERTIES.
- 3- SWITCH WILL PERFORM SATISFACTORILY IN TEMPERATURES TO MINUS 30°F.
 -LISTED BY UNDERWRITERS LABORATORY, INC. FOR USE IN CLASS I GROUPS C AND D VAPOR-AIR
 4- ATMOSPHERES, AND CLASS 2 GROUPS E, F AND G DUST-AIR ATMOSPHERES

CHARACTERISTICS	ELECTRICAL DATA	SCALE 1/2 TO 1	
OPERATING FORCE --- 6 LBS. APPROX.	CONTACT ARRANGEMENT TWO CIRCUIT DOUBLE THROW DOUBLE BREAK	DO NOT SCALE PRINT	
RELEASE FORCE --- 4 LBS. APPROX.	(A) 10 A-120, 240, OR 480 VAC, 1/2 HP - 120 VAC 1 HP - 240 VAC; 0.8 A-115 VDC; 0.4 A-230 VDC (B) PILOT DUTY: 720VA-HEAVY DUTY (C) 600 VAC MAX	UNLESS OTHERWISE SPECIFIED DIMENSIONS ARE IN INCHES TOLERANCES ARE: ONE PLACE (.0) ±.030 TWO PLACE (.00) ±.015 THREE PLACE (.000) ±.005 ANGLES ±.005	
DIFFERENTIAL TRAVEL --- .020 MAX.		(UL) (SA)	WEIGHT 1LB. 13OZ.
OVERTRAVEL --- .475 MIN.			
SWITCH-BASIC REPLACEMENT --- 1 MN1			

REPLACES: RELEASE NO. SR 7258
 CHECK: EPL 8 FEB 58
 CHECK: JWM 7 FEB 58
 CHECK: GCH 14 FEB 58
 DRAWN: R.E.R. 5 FEB 58
 CHECK: GCH 14 FEB 58
 FO-50378