

Excellent Integrated System Limited

Stocking Distributor

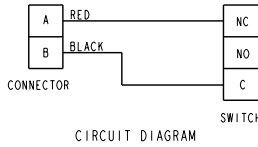
Click to view price, real time Inventory, Delivery & Lifecycle Information:

[Honeywell Sensing and Productivity Solutions
38HM42](#)

For any questions, you can email us directly:

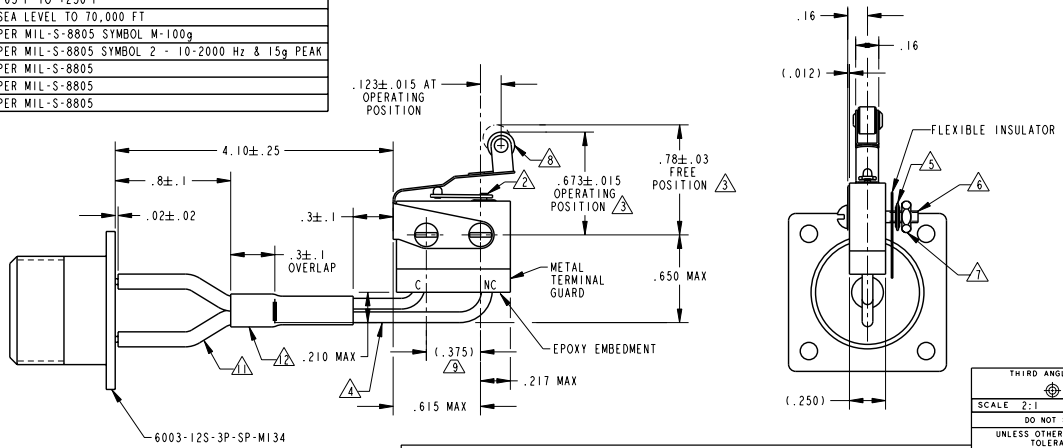
sales@integrated-circuit.com

SPECIFICATION-DETAILS:																					
STANDARD:	△																				
CONSTRUCTION:																					
ENCLOSURE DESIGN	HERMETIC SEAL																				
CONTACT MATERIAL & CONFIGURATION	SILVER																				
CIRCUIT CONFIGURATION	SEE CIRCUIT DIAGRAM																				
TERMINATION	SEE DRAWING																				
WEIGHT																					
EXPOSED METALS	CORROSION RESISTANT STAINLESS STEEL																				
ELECTRICAL CHARACTERISTICS:																					
CONTACT ARRANGEMENT	S.P.N.C.																				
ELECTRICAL RATINGS	<table border="1"> <thead> <tr> <th>LOAD</th> <th>28 VDC</th> <th>SEA LEVEL</th> <th>115 VAC, 400 CPS</th> <th>70,000 FT</th> </tr> </thead> <tbody> <tr> <td>RESISTIVE</td> <td>4 AMP</td> <td>2 AMP</td> <td>2 AMP</td> <td>4 AMP</td> </tr> <tr> <td>INDUCTIVE</td> <td>2 AMP</td> <td>2 AMP</td> <td>2 AMP</td> <td>2 AMP</td> </tr> <tr> <td>CAPACITIVE</td> <td>1 AMP</td> <td>.5 AMP</td> <td>.5 AMP</td> <td>1 AMP</td> </tr> </tbody> </table>	LOAD	28 VDC	SEA LEVEL	115 VAC, 400 CPS	70,000 FT	RESISTIVE	4 AMP	2 AMP	2 AMP	4 AMP	INDUCTIVE	2 AMP	2 AMP	2 AMP	2 AMP	CAPACITIVE	1 AMP	.5 AMP	.5 AMP	1 AMP
LOAD	28 VDC	SEA LEVEL	115 VAC, 400 CPS	70,000 FT																	
RESISTIVE	4 AMP	2 AMP	2 AMP	4 AMP																	
INDUCTIVE	2 AMP	2 AMP	2 AMP	2 AMP																	
CAPACITIVE	1 AMP	.5 AMP	.5 AMP	1 AMP																	
- SEA LEVEL																					
- 70,000 FEET																					
DIELECTRIC STRENGTH & INSULATION RES (BASIC SWITCH)	DIELECTRIC STRENGTH (≈ 60 Hz FOR 5 SECONDS)		INSULATION RESISTANCE (500 VDC ±10%)																		
- BETWEEN TERMINALS AND EXPOSED NON-CURRENT CARRYING METAL	1000 V Rms, 500 μA (MAX LEAKAGE)		1000 Megohm MIN																		
- BETWEEN TERMINALS OF MUTUALLY INSULATED CIRCUITS	1000 V Rms, 500 μA (MAX LEAKAGE)		1000 Megohm MIN																		
- BETWEEN ALL UNCONNECTED TERMINALS OF THE SAME POLE	1000 V Rms, 500 μA (MAX LEAKAGE)		1000 Megohm MIN																		
SWITCH RESISTANCE	N/A																				
RECOMMENDATION OR USE IN APPL LESS THAN .5 amps AND/OR 12 volts	N/A △																				
MECHANICAL CHARACTERISTICS:																					
OPERATING FORCE	9 OZ MAX																				
RELEASE FORCE	2 OZ MIN																				
DIFFERENTIAL TRAVEL	.030 MAX																				
OVERTRAVEL	.030 MIN																				
MOUNTING STRENGTH	N/A																				
LIFE:	△																				
MECHANICAL LIFE	25,000 MIN																				
ELECTRICAL LIFE AT FULL RATED LOAD	25,000 MIN																				
ENVIRONMENTAL:																					
TEMPERATURE RANGE	-65°F TO +250°F																				
ALTITUDE RANGE	SEA LEVEL TO 70,000 FT																				
SHOCK △	PER MIL-S-8805 SYMBOL M-100g																				
VIBRATION △	PER MIL-S-8805 SYMBOL 2 - 10-2000 Hz & 15g PEAK																				
MOISTURE RESISTANCE △	PER MIL-S-8805																				
THERMAL SHOCK △	PER MIL-S-8805																				
SALT SPRAY △	PER MIL-S-8805																				



38HM42

- NOTES
- UNIT INCLUDES 2 HM SERIES TYPE BASIC SWITCH WITH ACTUATOR ASSEMBLED
 - ADJUSTMENT CAUTION: DO NOT ALLOW ACTUATOR LEAF TO COME IN CONTACT WITH FIXED END OF HM LEVER. SEAL DAMAGE MAY OCCUR IF LEAF ACTUATOR ADJUSTED TO MEET SPECIFIED OPERATING POSITION PRIOR TO DELIVERY. DISASSEMBLY AND SUBSEQUENT REASSEMBLY MAY ALTER THIS CONDITION
 - 2X NO. 18 WIRE LEAD PER MIL-W-22759/11 (RED N.C., BLACK COM.)
 - 2X CORROSION RESISTANT STEEL LOCKWASHER
 - 2X 2-56 UNC X .500 CORROSION RESISTANT STEEL ROUND HEAD MACHINE SCREW
 - 2X 2-56 UNC CORROSION RESISTANT STEEL HEX NUT
 - 2X NO. 12 WIDE CORROSION RESISTANT STEEL ROLLER (CONCENTRICITY .005 FIM)
 - HOLES THROUGH ACTUATOR WILL SIMULTANEOUS ACCEPT Ø.087 MIN PINS ON .375±.002 CENTERS
 - INSULATION RESISTANCE BETWEEN EITHER PIN AND CONNECTOR SHELL MUST BE 100 MEGOHMS MIN AT 500 VDC
 - 2X HEAT SHRINK TUBING PER M23053/12-312-C OR EQUIVALENT HEAT SHRINK TUBING PER M23053/12-325-C OR EQUIVALENT BASIC SWITCH IS CATEGORY II DEVICE PER MIL-S-8805/8 CONTACT HONEYWELL/MICRO SWITCH IF ADDITIONAL INFORMATION ON LOW ENERGY LOADS IS REQUIRED OR FOR HELP WITH SPECIFIC APPLICATIONS



THIS DRAWING COVERS A PROPRIETARY ITEM AND IS THE PROPERTY OF MICRO SWITCH, A DIVISION OF HONEYWELL. THIS DRAWING IS NOT TO BE COPIED OR USED WITHOUT THE APPROVAL OF MICRO SWITCH.

MICRO SWITCH
a Honeywell Division

SWITCH AND CONNECTOR ASSEMBLY

38HM42

ANSI Y14.5M-1982 APPLIES

FED. MFG. CODE 91929

CATALOG LISTING