

## **Excellent Integrated System Limited**

Stocking Distributor

Click to view price, real time Inventory, Delivery & Lifecycle Information:

[Honeywell Sensing and Productivity Solutions](#)  
[10HM1-1](#)

For any questions, you can email us directly:

[sales@integrated-circuit.com](mailto:sales@integrated-circuit.com)

# MICRO SWITCH

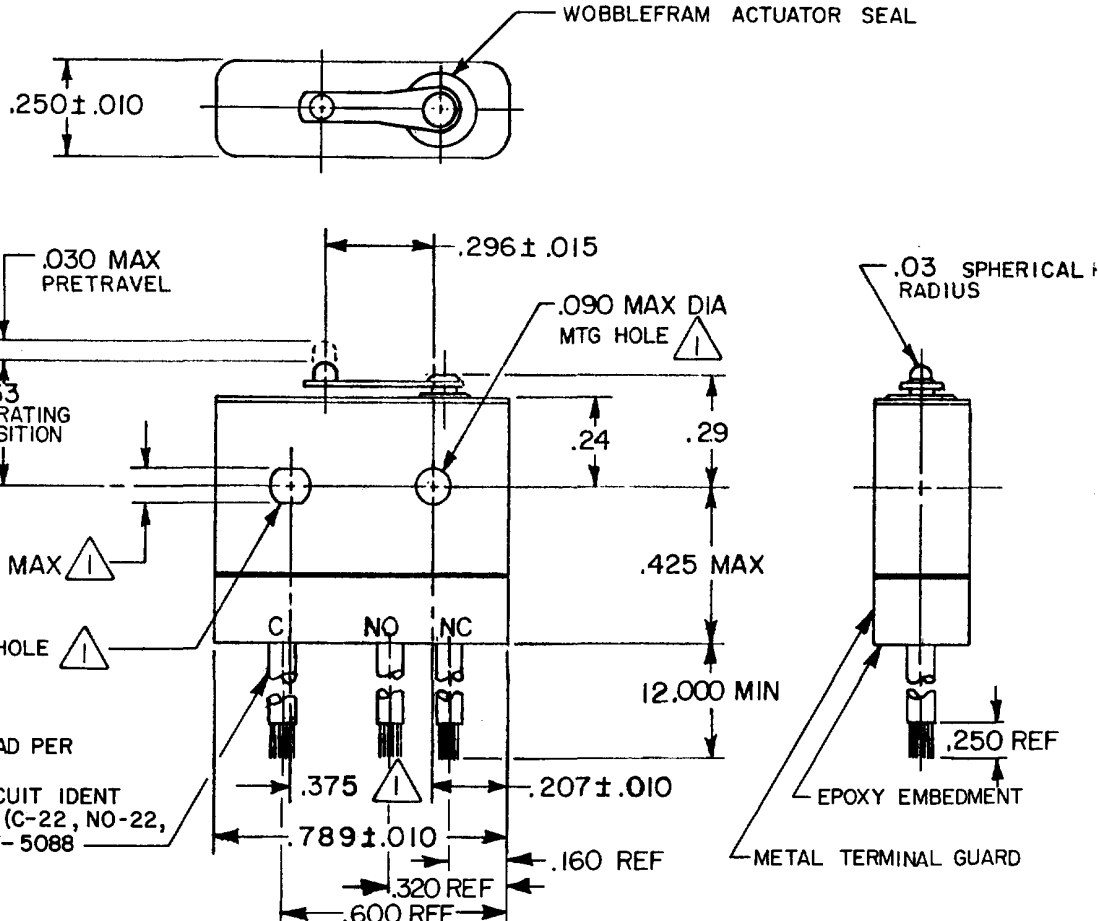
FREEPORT ILLINOIS, U.S.A  
 A DIVISION OF HONEYWELL INC.  
 FED. MFG. CODE 91929

## SWITCH - BASIC

CATALOG LISTING

### 10HM1-1

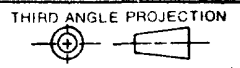
10HM1-1  
 PAGE 1 OF 1  
 M  
 DRAWING NUMBER  
 3  
 ISSUE  
 REVISIONS  
 A CO71228  
 DAW  
 1 NOV 91  
 B CO94220  
 DLT  
 23 MAR 99  
 FORMTEK  
 FO-5284-B  
 DRAWN  
 J A S 5 OCT 84  
 CHECKED  
 K A G 8 OCT 84  
 CHECKED  
 PR-13412  
 REPLACES



(3) NO. 22 WIRE LEAD PER MIL-W-22759/11 MARKED WITH CIRCUIT IDENT AND WIRE GAGE (C-22, NO-22, NC-22) PER MIL-W-5088

- NOTES
- 1 MOUNTING HOLES WILL ACCEPT PINS OR SCREWS OF .087 MAX DIA ON .375 ± .002 CENTERS
  - 2 - FOR USE IN TEMPERATURE RANGE -85°F TO +250°F (DOWN TO -300°F IF WIRE LEADS ARE NOT FLEXED)
  - 3 - HERMETICALLY SEALED (METAL-TO-METAL, GLASS-TO-METAL)
  - 4 - ALL EXPOSED PARTS ARE OF CORROSION RESISTANT MATERIALS
  - 5 WEIGHT OF SWITCH ONLY IS 0.22 OZ MAX WEIGHT OF CONDUCTOR GROUP ONLY IS 0.20 OZ MAX PER FOOT
  - 6 - DO NOT APPLY MORE THAN 1 1/2 INCH-LBS OF TORQUE WHEN TIGHTENING MOUNTING SCREWS
  - 7 - 24K GOLD MOVABLE CONTACT
  - 8 - GOLD ALLOY STATIONARY CONTACTS

THIS DRAWING COVERS A PROPRIETARY ITEM AND IS THE PROPERTY OF MICRO SWITCH, A DIVISION OF HONEYWELL. THIS DRAWING IS NOT TO BE COPIED OR USED WITHOUT THE APPROVAL OF MICRO SWITCH.



CHARACTERISTICS	ELECTRICAL DATA	SCALE 2:1	DO NOT SCALE PRINT
OPERATING FORCE-----7 OZ MAX	CONTACT ARRANGEMENT S P D T	UNLESS OTHERWISE SPECIFIED TOLERANCES ARE ONE PLACE (.0) ± .030 TWO PLACE (.00) ± .015 THREE PLACE (.000) ± .005 ANGLES ± RAW MATERIAL - COMMERCIAL STANDARD	DIMENSIONS ARE IN INCHES AND ARE TO BE MET BEFORE PROTECTIVE COATINGS ARE APPLIED
RELEASE FORCE-----1 OZ MIN	28 VOLTS DC RATING INDUCTIVE ---- SEA LEVEL-----1/4 AMP 70,000 FT-----1/4 AMP RESISTIVE ---- SEA LEVEL-----1/2 AMP 70,000 FT-----1/2 AMP		
DIFFERENTIAL TRAVEL -----.006 MAX		MICRO SWITCH STANDARDS APPLY	
OVERTRAVEL-----.003 MIN		WEIGHT	