

Excellent Integrated System Limited

Stocking Distributor

Click to view price, real time Inventory, Delivery & Lifecycle Information:

[Honeywell Sensing and Productivity Solutions](#)
[924CE1-T9A](#)

For any questions, you can email us directly:
sales@integrated-circuit.com

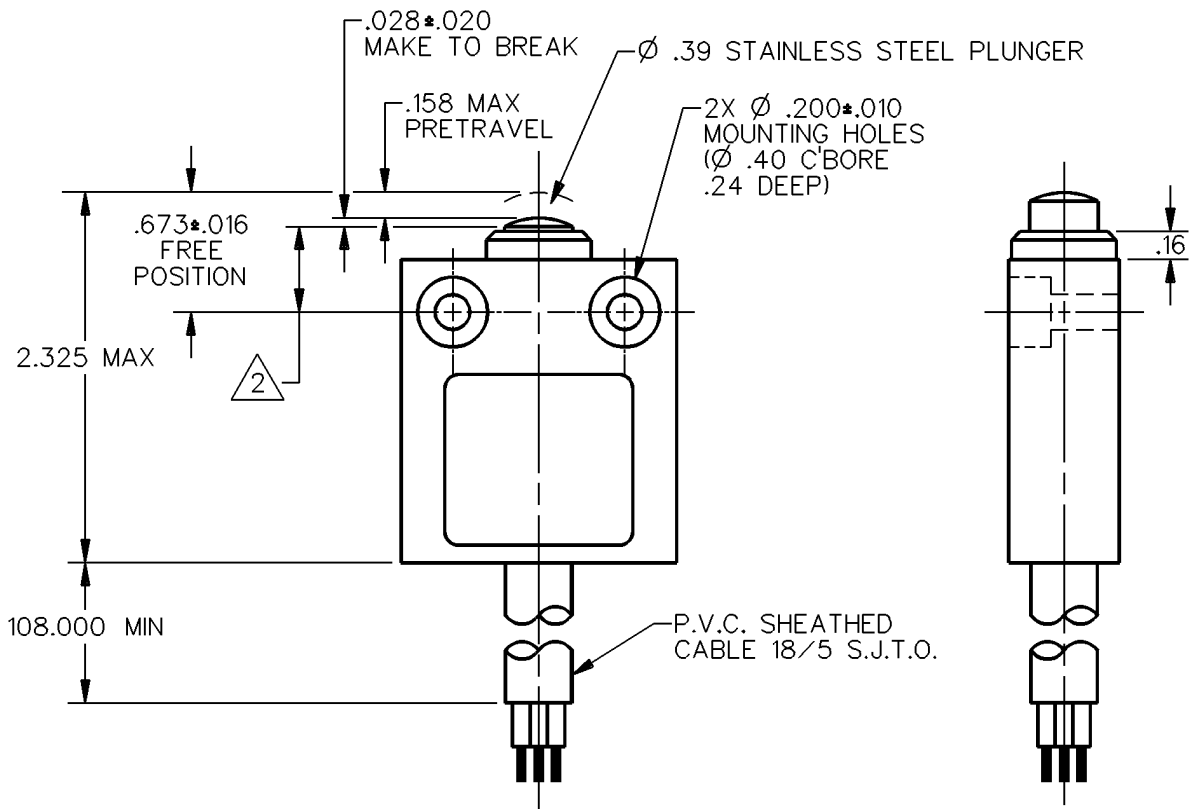
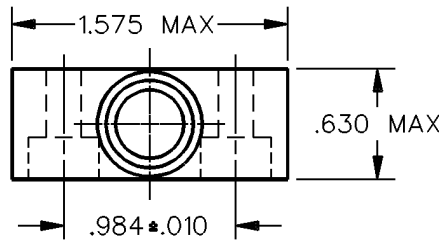
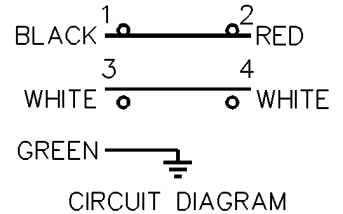
MICRO SWITCH
 a Honeywell Division

FED. MFG. CODE 91929

**MINIATURE PRECISION
 LIMIT SWITCH**

CATALOG LISTING

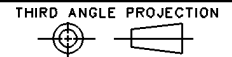
924CE1-T9



- NOTES
 1 - ZINC HOUSING FINISHED WITH GRAY PAINT
 2 - THE MINIMUM PLUNGER TRAVEL PAST BREAK, FOR A SAFE CONTACT GAP IS .060
 3 - MAKE BEFORE BREAK CIRCUITRY

ANSI Y14.5M-1982 APPLIES

THIS DRAWING COVERS A PROPRIETARY ITEM AND IS THE PROPERTY OF MICRO SWITCH, A DIVISION OF HONEYWELL. THIS DRAWING IS NOT TO BE COPIED OR USED WITHOUT THE APPROVAL OF MICRO SWITCH.



CHARACTERISTICS	ELECTRICAL DATA	SCALE FULL	DO NOT SCALE PRINT
OPERATING FORCE — — — 5.1 LB MAX OVERTRAVEL — — — .020 MIN	CONTACT ARRANGEMENT S P D T D B 10A-250 VAC 1/3HP-125 OR 250 VAC 	UNLESS OTHERWISE SPECIFIED TOLERANCES ARE ONE PLACE (.0) ±.030 TWO PLACE (.00) ±.015 THREE PLACE (.000) ±.005 ANGLES ±	
		WEIGHT	

924CE1-T9
 M
 DRAWING NUMBER
 1
 ISSUE
 REVISIONS
 CHECK
 CHECK
 DDM/CAD
 DRAWN
 S A V 29 AUG 91
 CHECK