

## Excellent Integrated System Limited

Stocking Distributor

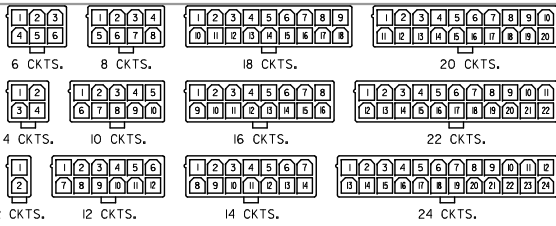
Click to view price, real time Inventory, Delivery & Lifecycle Information:

[Molex Connector Corporation](#)  
[0039290023](#)

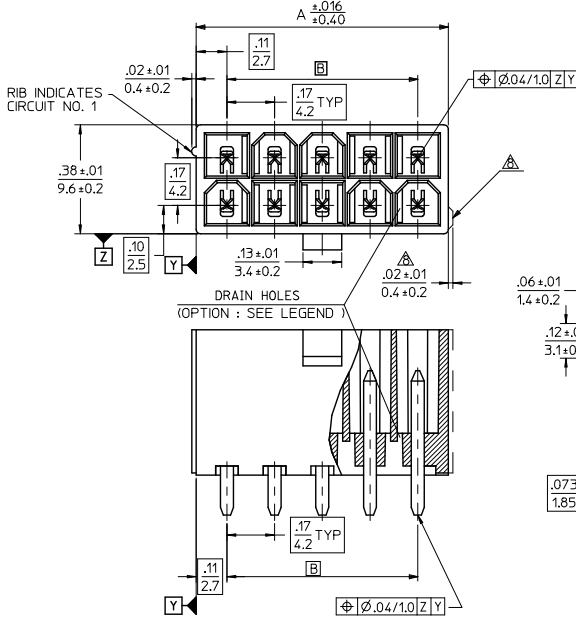
For any questions, you can email us directly:

[sales@integrated-circuit.com](mailto:sales@integrated-circuit.com)

CIRCUIT SIZE	DIM. 'A'	DIM. 'B'
2	.21 (5.4)	—
4	.38 (9.6)	.17 (4.2)
6	.54 (13.8)	.33 (8.4)
8	.71 (18.0)	.50 (12.6)
10	.87 (22.2)	.66 (16.8)
12	1.04 (26.4)	.83 (21.0)
14	1.20 (30.6)	.99 (25.2)
16	1.37 (34.8)	1.16 (29.4)
18	1.54 (39.0)	1.32 (33.6)
20	1.70 (43.2)	1.49 (37.8)
22	1.87 (47.4)	1.65 (42.0)
24	2.03 (51.6)	1.82 (46.2)

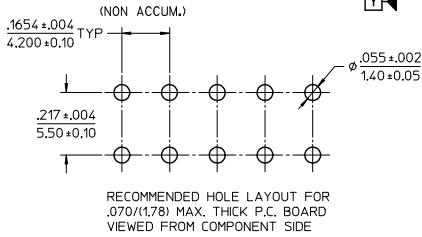
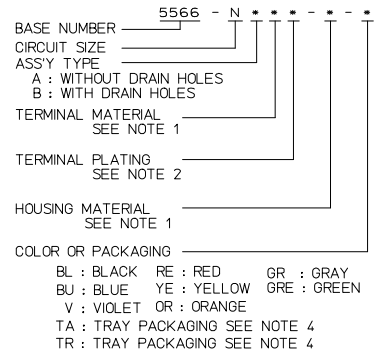


CIRCUIT SIZE LAYOUT

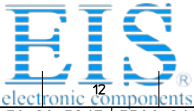


- NOTES:
- MATERIALS: HOUSING: "BLANK"=NYLON 6/6, UL94V-2, COLOR: NATURAL "210"=NYLON 6/6, UL94V-0, COLOR: NATURAL "400"=NYLON 6/6, UL94V-0, COLOR: BLACK TERMINALS: "BLANK" = BRASS "PB" = PHOSPHOR BRONZE
  - TERMINAL PLATING: "BLANK" = BRIGHT TIN 0.00035/(0.00090) MIN. OVER COPPER .00020/(0.00050) MIN. (BRASS) TIN .00035/(0.00090) MIN. REFLOW TREATMENT OR BRIGHT TIN .00035/(0.00090) MIN. (PHOSPHOR BRONZE) "S"=.000100/(0.00254) MIN. BRIGHT TIN OVER .000050/(0.00127) MIN NICKEL "GS2"=.000015/(0.00038) MIN. SELECT GOLD AND .000100/(0.00254) MIN. SELECT MATTE TIN OVER .000050/(0.00127) MIN. NICKEL OVERALL "GS"=.000030/(0.00076) MIN. SELECT GOLD AND .000100/(0.00254) MIN. SELECT MATTE TIN OVER .000050/(0.00127) MIN. NICKEL OVERALL
  - PRODUCT SPECIFICATION: PS-5566-001
  - PACKAGING: "BLANK"= BULK PACKED, "TA"=TRAY PACK PER PK-5566-001, "TR"=TRAY PACK PER PK-5566
  - PART MATES WITH MINI-FIT JR. RECEPTACLE NO. 5557.
  - PART IS NOT DESIGNED FOR CURRENT SHARING.
  - PARTS ARE NOT DESIGNED TO BE MATED OR UN-MATED WHILE CIRCUITS ARE LIVE.
  - ANTI-SHINGLING RIB MAY OR MAY NOT APPEAR ON HOUSINGS.
  - PART CONFORMS TO CLASS 'B' REQUIREMENTS OF COSMETIC SPECIFICATION PS-45499-002.

LEGEND



ADD PINS EC NO: UCP2014-212 DRAWING NO: 2013/11/13 CHKD: JELL APPR: SMITH	QUALITY SYMBOLS ▽=0 ▽=0 ▽=0	GENERAL TOLERANCES (UNLESS SPECIFIED) mm INCH 4 PLACES ± --- ± --- 3 PLACES ± --- ± .005 2 PLACES ± .13 ± .010 1 PLACE ± .25 ± --- ANGULAR ± 3°	DIMENSION STYLE IN/MM	SCALE 4:1	DESIGN UNITS METRIC	THIRD ANGLE PROJECTION
			DRAWN BY H.HIRAMOTO	DATE '89/04/03	TITLE MINI FIT JR VERTICAL HEADER ASSEMBLIES WITHOUT PEGS	
REV L7	DESCRIPTION	DRAFT WHERE APPLICABLE MUST REMAIN WITHIN DIMENSIONS	APPROVED BY M.FUKUSHIMA	DATE '94/04/20	MATERIAL NO. SEE TABLE DOCUMENT NO. SD-5566-002 SHEET NO. 1 OF 5	



Distributor of Molex Connector Corporation: Excellent Integrated System Limited

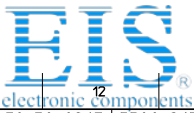
Datasheet of 0039290023 - CONN HEADER 2POS 4.2MM VERT GOLD

Contact us: sales@integrated-circuit.com Website: www.integrated-circuit.com

13	12	11	10	9	8	7	6	5	4	3	2	1
39-29-5247	5566-24APB-210	39-30-9245	5566-24AGS2-210	39-29-6248	5566-24AGS-210	39-30-6242	5566-24AS-210	39-28-8240	5566-24A-210	24		
↑ -5227	↑ -22APB-210	↑ -9225	↑ -22AGS2-210	↑ -6228	↑ -22AGS-210	↑ -6222	↑ -22AS-210	↑ -8220	↑ -22A-210	22		
↑ -5207	↑ -20APB-210	↑ -9205	↑ -20AGS2-210	↑ -6208	↑ -20AGS-210	↑ -6202	↑ -20AS-210	↑ -8200	↑ -20A-210	20		
↑ -5187	↑ -18APB-210	↑ -9185	↑ -18AGS2-210	↑ -6188	↑ -18AGS-210	↑ -6182	↑ -18AS-210	↑ -8180	↑ -18A-210	18		
↑ -5167	↑ -16APB-210	↑ -9165	↑ -16AGS2-210	↑ -6168	↑ -16AGS-210	↑ -6162	↑ -16AS-210	↑ -8160	↑ -16A-210	16		
↑ -5147	↑ -14APB-210	↑ -9145	↑ -14AGS2-210	↑ -6148	↑ -14AGS-210	↑ -6142	↑ -14AS-210	↑ -8140	↑ -14A-210	14		
↑ -5127	↑ -12APB-210	↑ -9125	↑ -12AGS2-210	↑ -6128	↑ -12AGS-210	↑ -6122	↑ -12AS-210	↑ -8120	↑ -12A-210	12		
↑ -5107	↑ -10APB-210	↑ -9105	↑ -10AGS2-210	↑ -6108	↑ -10AGS-210	↑ -6102	↑ -10AS-210	↑ -8100	↑ -10A-210	10		
↑ -5087	↑ -08APB-210	↑ -9085	↑ -08AGS2-210	↑ -6088	↑ -08AGS-210	↑ -6082	↑ -08AS-210	↑ -8080	↑ -08A-210	8		
↑ -5067	↑ -06APB-210	↑ -9065	↑ -06AGS2-210	↑ -6068	↑ -06AGS-210	↑ -6062	↑ -06AS-210	↑ -8060	↑ -06A-210	6		
↓ -5047	↓ -04APB-210	↓ -9045	↓ -04AGS2-210	↓ -6048	↓ -04AGS-210	↓ -6042	↓ -04AS-210	↓ -8040	↓ -04A-210	4		
39-29-5027	5566-02APB-210	39-30-9025	5566-02AGS2-210	39-29-6028	5566-02AGS-210	39-30-6022	5566-02AS-210	39-28-8020	5566-02A-210	2		
EDP NO.	ENG. NO.	EDP NO.	ENG. NO.	EDP NO.	ENG. NO.	EDP NO.	ENG. NO.	EDP NO.	ENG. NO.			CKT. SIZE
5566-NAPB-210		5566-NAGS2-210		5566-NAGS-210		5566-NAS-210		5566-NA-210				
39-29-5246	5566-24APB	39-30-9244	5566-24AGS2	39-29-0243	5566-24AGS	39-30-6241	5566-24AS	39-28-1243	5566-24A	24		
↑ -5226	↑ -22APB	↑ -9224	↑ -22AGS2	↑ -0223	↑ -22AGS	↑ -6221	↑ -22AS	↑ -1223	↑ -22A	22		
↑ -5206	↑ -20APB	↑ -9204	↑ -20AGS2	↑ -0203	↑ -20AGS	↑ -6201	↑ -20AS	↑ -1203	↑ -20A	20		
↑ -5186	↑ -18APB	↑ -9184	↑ -18AGS2	↑ -0183	↑ -18AGS	↑ -6181	↑ -18AS	↑ -1183	↑ -18A	18		
↑ -5166	↑ -16APB	↑ -9164	↑ -16AGS2	↑ -0163	↑ -16AGS	↑ -6161	↑ -16AS	↑ -1163	↑ -16A	16		
↑ -5146	↑ -14APB	↑ -9144	↑ -14AGS2	↑ -0143	↑ -14AGS	↑ -6141	↑ -14AS	↑ -1143	↑ -14A	14		
↑ -5126	↑ -12APB	↑ -9124	↑ -12AGS2	↑ -0123	↑ -12AGS	↑ -6121	↑ -12AS	↑ -1123	↑ -12A	12		
↑ -5106	↑ -10APB	↑ -9104	↑ -10AGS2	↑ -0103	↑ -10AGS	↑ -6101	↑ -10AS	↑ -1103	↑ -10A	10		
↑ -5086	↑ -08APB	↑ -9084	↑ -08AGS2	↑ -0083	↑ -08AGS	↑ -6081	↑ -08AS	↑ -1083	↑ -08A	8		
↑ -5066	↑ -06APB	↑ -9064	↑ -06AGS2	↑ -0063	↑ -06AGS	↑ -6061	↑ -06AS	↑ -1063	↑ -06A	6		
↓ -5046	↓ -04APB	↓ -9044	↓ -04AGS2	↓ -0043	↓ -04AGS	↓ -6041	↓ -04AS	↓ -1043	↓ -04A	4		
39-29-5026	5566-02APB	39-30-9024	5566-02AGS2	39-29-0023	5566-02AGS	39-30-6021	5566-02AS	39-28-1023	5566-02A	2		
EDP NO.	ENG. NO.	EDP NO.	ENG. NO.	EDP NO.	ENG. NO.	EDP NO.	ENG. NO.	EDP NO.	ENG. NO.			CKT. SIZE
5566-NAPB		5566-NAGS2		5566-NAGS		5566-NAS		5566-NA				

PARTS WITH OUT DRAIN HOLES

SEE SHEET 1 EC NO: UCP2014-212 DRAWING NO: 2013/11/13 CHKD: BELL APPR: SMITH L7 REV	QUALITY SYMBOLS 	GENERAL TOLERANCES (UNLESS SPECIFIED)		DIMENSION STYLE		SCALE	DESIGN UNITS	THIRD ANGLE PROJECTION	
		mm	INCH	IN/MM		1:1	METRIC		
		4 PLACES ± --- ± ---		DRAWN BY	DATE	TITLE			
		3 PLACES ± --- ± .005		H.HIRAMOTO	'89/04/03	MINI FIT JR VERTICAL HEADER ASSEMBLIES WITHOUT PEGS			
2 PLACES ± .13 ± .010		CHECKED BY	DATE	MATERIAL NO.					
1 PLACE ± .25 ± ---		M. FUKUSHIMA	'94/04/20	SD-5566-002					
ANGULAR ± 3°		APPROVED BY	DATE	DOCUMENT NO.					
		FSMITH	2012/05/04	SHEET NO.					
DRAFT WHERE APPLICABLE MUST REMAIN WITHIN DIMENSIONS		SEE TABLE		2 OF 5					
THIS DRAWING CONTAINS INFORMATION THAT IS PROPRIETARY TO MOLEX INCORPORATED AND SHOULD NOT BE USED WITHOUT WRITTEN PERMISSION									



# Distributor of Molex Connector Corporation: Excellent Integrated System Limited

## Datasheet of 0039290023 - CONN HEADER 2POS 4.2MM VERT GOLD

Contact us: [sales@integrated-circuit.com](mailto:sales@integrated-circuit.com) Website: [www.integrated-circuit.com](http://www.integrated-circuit.com)

13	12	11	10	9	8	7	6	5	4	3	2	1
39-30-9247	5566-24BGS2-210	39-31-0248	5566-24BGS-210	39-31-0242	5566-24BS-210	39-31-0240	5566-24B-210	39-30-6244	5566-24APBS-210	24		
↑ -9227	↑ -22BGS2-210	↑ -0228	↑ -22BGS-210	↑ -0222	↑ -22BS-210	↑ -0220	↑ -22B-210	↑ -6224	↑ -22APBS-210	22		
↑ -9207	↑ -20BGS2-210	↑ -0208	↑ -20BGS-210	↑ -0202	↑ -20BS-210	↑ -0200	↑ -20B-210	↑ -6204	↑ -20APBS-210	20		
↑ -9187	↑ -18BGS2-210	↑ -0188	↑ -18BGS-210	↑ -0182	↑ -18BS-210	↑ -0180	↑ -18B-210	↑ -6184	↑ -18APBS-210	18		
↑ -9167	↑ -16BGS2-210	↑ -0168	↑ -16BGS-210	↑ -0162	↑ -16BS-210	↑ -0160	↑ -16B-210	↑ -6164	↑ -16APBS-210	16		
↑ -9147	↑ -14BGS2-210	↑ -0148	↑ -14BGS-210	↑ -0142	↑ -14BS-210	↑ -0140	↑ -14B-210	↑ -6144	↑ -14APBS-210	14		
↑ -9127	↑ -12BGS2-210	↑ -0128	↑ -12BGS-210	↑ -0122	↑ -12BS-210	↑ -0120	↑ -12B-210	↑ -6124	↑ -12APBS-210	12		
↑ -9107	↑ -10BGS2-210	↑ -0108	↑ -10BGS-210	↑ -0102	↑ -10BS-210	↑ -0100	↑ -10B-210	↑ -6104	↑ -10APBS-210	10		
↑ -9087	↑ -08BGS2-210	↑ -0088	↑ -08BGS-210	↑ -0082	↑ -08BS-210	↑ -0080	↑ -08B-210	↑ -6084	↑ -08APBS-210	8		
↑ -9067	↑ -06BGS2-210	↑ -0068	↑ -06BGS-210	↑ -0062	↑ -06BS-210	↑ -0060	↑ -06B-210	↑ -6064	↑ -06APBS-210	6		
↓ -9047	↓ -04BGS2-210	↓ -0048	↓ -04BGS-210	↓ -0042	↓ -04BS-210	↓ -0040	↓ -04B-210	↓ -6044	↓ -04APBS-210	4		
EDP NO.	ENG. NO.	EDP NO.	ENG. NO.	EDP NO.	ENG. NO.	EDP NO.	ENG. NO.	EDP NO.	ENG. NO.	EDP NO.	ENG. NO.	CKT. SIZE
39-30-9027	5566-02BGS2-210	39-31-0028	5566-02BGS-210	39-31-0022	5566-02BS-210	39-31-0020	5566-02B-210	39-30-6024	5566-02APBS-210	2		
↑ -9226	↑ -22BGS2	↑ -0227	↑ -22BGS	↑ -0221	↑ -22BS	↑ -0226	↑ -22B	↑ -6223	↑ -22APBS	22		
↑ -9206	↑ -20BGS2	↑ -0207	↑ -20BGS	↑ -0201	↑ -20BS	↑ -0206	↑ -20B	↑ -6203	↑ -20APBS	20		
↑ -9186	↑ -18BGS2	↑ -0187	↑ -18BGS	↑ -0181	↑ -18BS	↑ -0186	↑ -18B	↑ -6183	↑ -18APBS	18		
↑ -9166	↑ -16BGS2		↑ -16BGS	↑ -0161	↑ -16BS	↑ -0166	↑ -16B	↑ -6163	↑ -16APBS	16		
↑ -9146	↑ -14BGS2	↑ -0147	↑ -14BGS	↑ -0141	↑ -14BS	↑ -0146	↑ -14B	↑ -6143	↑ -14APBS	14		
↑ -9126	↑ -12BGS2	↑ -0127	↑ -12BGS	↑ -0121	↑ -12BS	↑ -0126	↑ -12B	↑ -6123	↑ -12APBS	12		
↑ -9106	↑ -10BGS2	↑ -0107	↑ -10BGS	↑ -0101	↑ -10BS	↑ -0106	↑ -10B	↑ -6103	↑ -10APBS	10		
↑ -9086	↑ -08BGS2	↑ -0087	↑ -08BGS	↑ -0081	↑ -08BS	↑ -0086	↑ -08B	↑ -6083	↑ -08APBS	8		
↑ -9066	↑ -06BGS2	↑ -0067	↑ -06BGS	↑ -0061	↑ -06BS	↑ -0066	↑ -06B	↑ -6063	↑ -06APBS	6		
↓ -9046	↓ -04BGS2	↓ -0047	↓ -04BGS	↓ -0041	↓ -04BS	↓ -0046	↓ -04B	↓ -6043	↓ -04APBS	4		
EDP NO.	ENG. NO.	EDP NO.	ENG. NO.	EDP NO.	ENG. NO.	EDP NO.	ENG. NO.	EDP NO.	ENG. NO.	EDP NO.	ENG. NO.	CKT. SIZE
5566-NBGS2		5566-NBGS		5566-NBS		5566-NB		5566-NAPBS				
39-30-9246	5566-24BGS2	39-31-0247	5566-24BGS	39-31-0243	5566-24BPS	39-29-3246	5566-24B	39-30-6243	5566-24APBS	24		
↑ -9225	↑ -22BPS	↑ -0225	↑ -22BPS	↑ -0223	↑ -22BPS	↑ -0226	↑ -22BPS-210	↑ -0224	↑ -22BPS-210	22		
↑ -0205	↑ -20BPS	↑ -0205	↑ -20BPS	↑ -0203	↑ -20BPS	↑ -0206	↑ -20BPS-210	↑ -0204	↑ -20BPS-210	20		
↑ -0185	↑ -18BPS	↑ -0185	↑ -18BPS	↑ -0183	↑ -18BPS	↑ -0186	↑ -18BPS-210	↑ -0184	↑ -18BPS-210	18		
↑ -0165	↑ -16BPS	↑ -0165	↑ -16BPS	↑ -0163	↑ -16BPS	↑ -0166	↑ -16BPS-210	↑ -0164	↑ -16BPS-210	16		
↑ -0145	↑ -14BPS	↑ -0145	↑ -14BPS	↑ -0143	↑ -14BPS	↑ -0146	↑ -14BPS-210	↑ -0144	↑ -14BPS-210	14		
↑ -0125	↑ -12BPS	↑ -0125	↑ -12BPS	↑ -0123	↑ -12BPS	↑ -0126	↑ -12BPS-210	↑ -0124	↑ -12BPS-210	12		
↑ -0105	↑ -10BPS	↑ -0105	↑ -10BPS	↑ -0103	↑ -10BPS	↑ -0106	↑ -10BPS-210	↑ -0104	↑ -10BPS-210	10		
↑ -0085	↑ -08BPS	↑ -0085	↑ -08BPS	↑ -0083	↑ -08BPS	↑ -0086	↑ -08BPS-210	↑ -0084	↑ -08BPS-210	8		
↑ -0065	↑ -06BPS	↑ -0065	↑ -06BPS	↑ -0063	↑ -06BPS	↑ -0066	↑ -06BPS-210	↑ -0064	↑ -06BPS-210	6		
↓ -0045	↓ -04BPS	↓ -0045	↓ -04BPS	↓ -0043	↓ -04BPS	↓ -0046	↓ -04BPS-210	↓ -0044	↓ -04BPS-210	4		
EDP NO.	ENG. NO.	EDP NO.	ENG. NO.	EDP NO.	ENG. NO.	EDP NO.	ENG. NO.	EDP NO.	ENG. NO.	EDP NO.	ENG. NO.	CKT. SIZE
5566-NBPS		5566-NBPS		5566-NBPS		5566-NBPS-210		5566-NBPS-210				

PARTS WITH DRAIN HOLES

SEE SHEET 1 EC NO: UCP2014-212 2013/11/13 DRAWING CHKO: BELL 2013/11/13 APPROV: SMITH 2013/11/13 DESCRIPTION L7 REV	QUALITY SYMBOLS	GENERAL TOLERANCES (UNLESS SPECIFIED)	DIMENSION STYLE	SCALE	DESIGN UNITS	THIRD ANGLE PROJECTION
	▽=0	mm INCH	IN/MM	1:1	METRIC	
	▽=0	4 PLACES ± --- ± ---	DRAWN BY DATE			
	▽=0	3 PLACES ± --- ± .005	H.HIRAMOTO '89/04/03			
	2 PLACES ± .13 ± .010	CHECKED BY DATE				TITLE
	1 PLACE ± .25 ± ---	M.FUKUSHIMA '94/04/20				MINI FIT JR VERTICAL HEADER ASSEMBLIES WITHOUT PEGS
	ANGULAR ± 3°	APPROVED BY DATE				MOLEX INCORPORATED
		SMITH 2012/05/04				
		MATERIAL NO.				DOCUMENT NO.
		SEE TABLE				SD-5566-002
		DRAFT WHERE APPLICABLE MUST REMAIN WITHIN DIMENSIONS				SHEET NO. 3 OF 5
						THIS DRAWING CONTAINS INFORMATION THAT IS PROPRIETARY TO MOLEX INCORPORATED AND SHOULD NOT BE USED WITHOUT WRITTEN PERMISSION

COLORED PART NUMBERS

Table with columns for EDP NO., ENG NO., and CKT. SIZE, listing various part numbers and their corresponding sizes.

PARTS WITHOUT DRAIN HOLES

Technical drawing header containing drawing information, dimensions, and material specifications.

[TRAY PACKED PART NUMBERS]

PARTS WITHOUT DRAIN HOLES		39-53-9249	5566-24A-210-TA	39-53-9248	5566-24A-TA	24
			↑ -22A-210-TA	↑ -9228	↑ -22A-TA	22
			-20A-210-TA	-9208	-20A-TA	20
	39-34-1180	5566-18A-210-TR	-18A-210-TA	-9188	-18A-TA	18
			-16A-210-TA	-9168	-16A-TA	16
			-14A-210-TA	-9148	-14A-TA	14
			-12A-210-TA	-9128	-12A-TA	12
			-10A-210-TA	-9108	-10A-TA	10
			-08A-210-TA	-9088	-08A-TA	8
46999-0630	5566-06AGS2-BL-TA		-06A-210-TA	-9068	-06A-TA	6
46999-0629	5566-04AGS2-BL-TA		↓ -04A-210-TA	↓ -9048	↓ -04A-TA	4
EDP NO.	ENG. NO.	EDP NO.	ENG. NO.	EDP NO.	ENG. NO.	EDP NO.
	5566-NAGS2-BL-TA		5566-NA-210-TR		5566-NA-210-TA	
					39-53-9028	5566-02A-TA
						2
						2

SEE SHEET 1 EC NO: UCP204-212 DRAWING NO: 2013/11/13 CHKD: BELL APPR: SMITH 2013/11/13 2013/11/13 2013/11/13	QUALITY SYMBOLS ∇=0 ∇=0 ∇=0	GENERAL TOLERANCES (UNLESS SPECIFIED) mm INCH 4 PLACES ± --- ± --- 3 PLACES ± --- ± .005 2 PLACES ± .13 ± .010 1 PLACE ± .25 ± --- ANGULAR ± 3°	DIMENSION STYLE IN/MM DRAWN BY DATE H.HIRAMOTO '89/04/03 CHECKED BY DATE M.FUKUSHIMA '94/04/20 APPROVED BY DATE F.SMITH 2012/05/04	SCALE 1:1 DESIGN UNITS METRIC THIRD ANGLE PROJECTION	TITLE MINI FIT JR VERTICAL HEADER ASSEMBLIES WITHOUT PEGS	MATERIAL NO. SEE TABLE	DOCUMENT NO. SD-5566-002	SHEET NO. 5 OF 5