

Excellent Integrated System Limited

Stocking Distributor

Click to view price, real time Inventory, Delivery & Lifecycle Information:

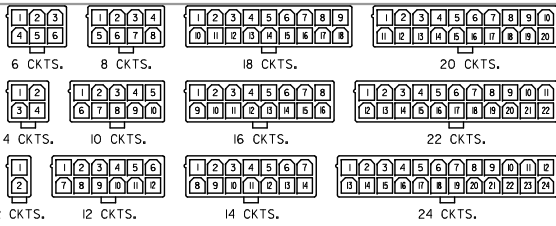
[Molex Connector Corporation](#)

[39-29-0143](#)

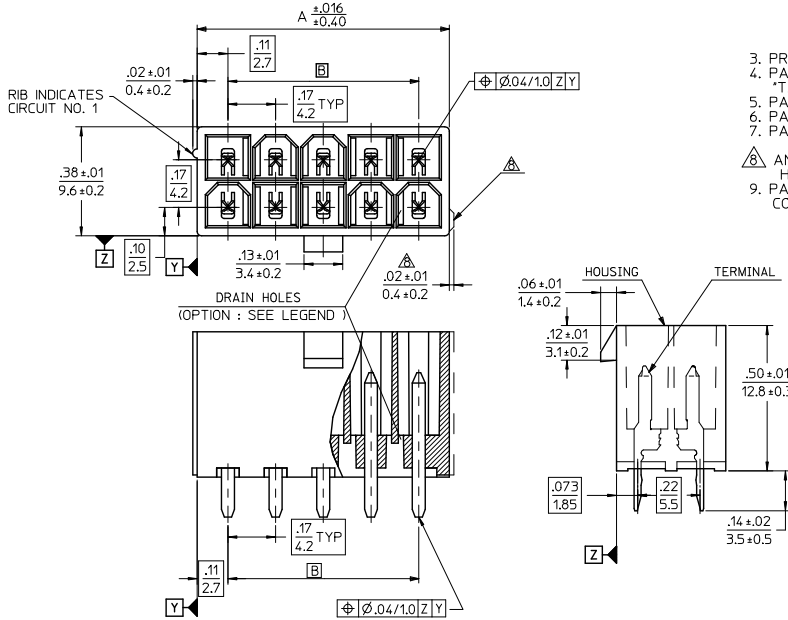
For any questions, you can email us directly:

sales@integrated-circuit.com

CIRCUIT SIZE	DIM. 'A'	DIM. 'B'
2	.21 (5.4)	—
4	.38 (9.6)	.17 (4.2)
6	.54 (13.8)	.33 (8.4)
8	.71 (18.0)	.50 (12.6)
10	.87 (22.2)	.66 (16.8)
12	1.04 (26.4)	.83 (21.0)
14	1.20 (30.6)	.99 (25.2)
16	1.37 (34.8)	1.16 (29.4)
18	1.54 (39.0)	1.32 (33.6)
20	1.70 (43.2)	1.49 (37.8)
22	1.87 (47.4)	1.65 (42.0)
24	2.03 (51.6)	1.82 (46.2)

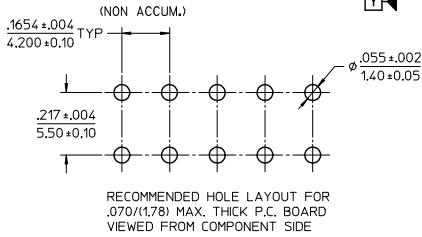
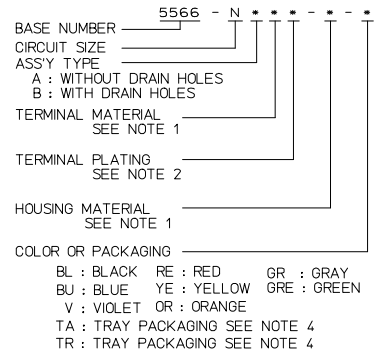


CIRCUIT SIZE LAYOUT



- NOTES:
- MATERIALS:
HOUSING:
"BLANK"=NYLON 6/6, UL94V-2, COLOR: NATURAL
"210"=NYLON 6/6, UL94V-0, COLOR: NATURAL
"400"=NYLON 6/6, UL94V-0, COLOR: BLACK
TERMINALS:
"BLANK" = BRASS
"PB" = PHOSPHOR BRONZE
 - TERMINAL PLATING:
"BLANK" = BRIGHT TIN 0.00035/(0.00090) MIN. OVER COPPER .00020/(0.00050) MIN. (BRASS)
TIN .00035/(0.00090) MIN. REFLOW TREATMENT OR BRIGHT TIN .00035/(0.00090) MIN. (PHOSPHOR BRONZE)
"S"=.000100/(0.00254) MIN. BRIGHT TIN OVER .000050/(0.00127) MIN NICKEL
"GS2"=.000015/(0.00038) MIN. SELECT GOLD AND .000100/(0.00254) MIN. SELECT MATTE TIN OVER .000050/(0.00127) MIN. NICKEL OVERALL
"GS"=.000030/(0.00076) MIN. SELECT GOLD AND .000100/(0.00254) MIN. SELECT MATTE TIN OVER .000050/(0.00127) MIN. NICKEL OVERALL
 - PRODUCT SPECIFICATION: PS-5566-001
 - PACKAGING: "BLANK"= BULK PACKED, "TA"=TRAY PACK PER PK-5566-001, "TR"=TRAY PACK PER PK-5566
 - PART MATES WITH MINI-FIT JR. RECEPTACLE NO. 5557.
 - PART IS NOT DESIGNED FOR CURRENT SHARING.
 - PARTS ARE NOT DESIGNED TO BE MATED OR UN-MATED WHILE CIRCUITS ARE LIVE.
 - ANTI-SHINGLING RIB MAY OR MAY NOT APPEAR ON HOUSINGS.
 - PART CONFORMS TO CLASS 'B' REQUIREMENTS OF COSMETIC SPECIFICATION PS-45499-002.

LEGEND



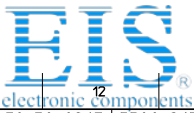
RECOMMENDED HOLE LAYOUT FOR .070(1.78) MAX. THICK P.C. BOARD VIEWED FROM COMPONENT SIDE

ADD PINS EC NO: UCP2014-212 DRAWING NO: 2013/11/13 CHKD: JELL APPR: SMITH	QUALITY SYMBOLS ▽=0 ▽=0 ▽=0	GENERAL TOLERANCES (UNLESS SPECIFIED) mm INCH 4 PLACES ± --- ± --- 3 PLACES ± --- ± .005 2 PLACES ± .13 ± .010 1 PLACE ± .25 ± --- ANGULAR ± 3°	DIMENSION STYLE IN/MM	SCALE 4:1	DESIGN UNITS METRIC	THIRD ANGLE PROJECTION
			DRAWN BY H. HIRAMOTO	DATE '89/04/03	TITLE MINI FIT JR VERTICAL HEADER ASSEMBLIES WITHOUT PEGS	
REV L7	DESCRIPTION	DRAFT WHERE APPLICABLE MUST REMAIN WITHIN DIMENSIONS	APPROVED BY M. FUKUSHIMA	DATE '94/04/20	MATERIAL NO. DOCUMENT NO. SD-5566-002	
			MATERIAL NO. DOCUMENT NO. SD-5566-002		SHEET NO. 1 OF 5	

13	12	11	10	9	8	7	6	5	4	3	2	1
39-29-5247	5566-24APB-210	39-30-9245	5566-24AGS2-210	39-29-6248	5566-24AGS-210	39-30-6242	5566-24AS-210	39-28-8240	5566-24A-210	24		
↑ -5227	↑ -22APB-210	↑ -9225	↑ -22AGS2-210	↑ -6228	↑ -22AGS-210	↑ -6222	↑ -22AS-210	↑ -8220	↑ -22A-210	22		
↑ -5207	↑ -20APB-210	↑ -9205	↑ -20AGS2-210	↑ -6208	↑ -20AGS-210	↑ -6202	↑ -20AS-210	↑ -8200	↑ -20A-210	20		
↑ -5187	↑ -18APB-210	↑ -9185	↑ -18AGS2-210	↑ -6188	↑ -18AGS-210	↑ -6182	↑ -18AS-210	↑ -8180	↑ -18A-210	18		
↑ -5167	↑ -16APB-210	↑ -9165	↑ -16AGS2-210	↑ -6168	↑ -16AGS-210	↑ -6162	↑ -16AS-210	↑ -8160	↑ -16A-210	16		
↑ -5147	↑ -14APB-210	↑ -9145	↑ -14AGS2-210	↑ -6148	↑ -14AGS-210	↑ -6142	↑ -14AS-210	↑ -8140	↑ -14A-210	14		
↑ -5127	↑ -12APB-210	↑ -9125	↑ -12AGS2-210	↑ -6128	↑ -12AGS-210	↑ -6122	↑ -12AS-210	↑ -8120	↑ -12A-210	12		
↑ -5107	↑ -10APB-210	↑ -9105	↑ -10AGS2-210	↑ -6108	↑ -10AGS-210	↑ -6102	↑ -10AS-210	↑ -8100	↑ -10A-210	10		
↑ -5087	↑ -08APB-210	↑ -9085	↑ -08AGS2-210	↑ -6088	↑ -08AGS-210	↑ -6082	↑ -08AS-210	↑ -8080	↑ -08A-210	8		
↑ -5067	↑ -06APB-210	↑ -9065	↑ -06AGS2-210	↑ -6068	↑ -06AGS-210	↑ -6062	↑ -06AS-210	↑ -8060	↑ -06A-210	6		
↓ -5047	↓ -04APB-210	↓ -9045	↓ -04AGS2-210	↓ -6048	↓ -04AGS-210	↓ -6042	↓ -04AS-210	↓ -8040	↓ -04A-210	4		
39-29-5027	5566-02APB-210	39-30-9025	5566-02AGS2-210	39-29-6028	5566-02AGS-210	39-30-6022	5566-02AS-210	39-28-8020	5566-02A-210	2		
EDP NO.	ENG. NO.	EDP NO.	ENG. NO.	EDP NO.	ENG. NO.	EDP NO.	ENG. NO.	EDP NO.	ENG. NO.			CKT. SIZE
5566-NAPB-210		5566-NAGS2-210		5566-NAGS-210		5566-NAS-210		5566-NA-210				
39-29-5246	5566-24APB	39-30-9244	5566-24AGS2	39-29-0243	5566-24AGS	39-30-6241	5566-24AS	39-28-1243	5566-24A	24		
↑ -5226	↑ -22APB	↑ -9224	↑ -22AGS2	↑ -0223	↑ -22AGS	↑ -6221	↑ -22AS	↑ -1223	↑ -22A	22		
↑ -5206	↑ -20APB	↑ -9204	↑ -20AGS2	↑ -0203	↑ -20AGS	↑ -6201	↑ -20AS	↑ -1203	↑ -20A	20		
↑ -5186	↑ -18APB	↑ -9184	↑ -18AGS2	↑ -0183	↑ -18AGS	↑ -6181	↑ -18AS	↑ -1183	↑ -18A	18		
↑ -5166	↑ -16APB	↑ -9164	↑ -16AGS2	↑ -0163	↑ -16AGS	↑ -6161	↑ -16AS	↑ -1163	↑ -16A	16		
↑ -5146	↑ -14APB	↑ -9144	↑ -14AGS2	↑ -0143	↑ -14AGS	↑ -6141	↑ -14AS	↑ -1143	↑ -14A	14		
↑ -5126	↑ -12APB	↑ -9124	↑ -12AGS2	↑ -0123	↑ -12AGS	↑ -6121	↑ -12AS	↑ -1123	↑ -12A	12		
↑ -5106	↑ -10APB	↑ -9104	↑ -10AGS2	↑ -0103	↑ -10AGS	↑ -6101	↑ -10AS	↑ -1103	↑ -10A	10		
↑ -5086	↑ -08APB	↑ -9084	↑ -08AGS2	↑ -0083	↑ -08AGS	↑ -6081	↑ -08AS	↑ -1083	↑ -08A	8		
↑ -5066	↑ -06APB	↑ -9064	↑ -06AGS2	↑ -0063	↑ -06AGS	↑ -6061	↑ -06AS	↑ -1063	↑ -06A	6		
↓ -5046	↓ -04APB	↓ -9044	↓ -04AGS2	↓ -0043	↓ -04AGS	↓ -6041	↓ -04AS	↓ -1043	↓ -04A	4		
39-29-5026	5566-02APB	39-30-9024	5566-02AGS2	39-29-0023	5566-02AGS	39-30-6021	5566-02AS	39-28-1023	5566-02A	2		
EDP NO.	ENG. NO.	EDP NO.	ENG. NO.	EDP NO.	ENG. NO.	EDP NO.	ENG. NO.	EDP NO.	ENG. NO.			CKT. SIZE
5566-NAPB		5566-NAGS2		5566-NAGS		5566-NAS		5566-NA				

PARTS WITH OUT DRAIN HOLES

SEE SHEET 1 EC NO: UCP2014-212 2013/11/13 DRAWING NO CHKD: BELL 2013/11/13 APPR: SMITH 2013/11/13 DESCRIPTION L7 REV	QUALITY SYMBOLS	GENERAL TOLERANCES (UNLESS SPECIFIED)	DIMENSION STYLE	SCALE	DESIGN UNITS	THIRD ANGLE PROJECTION
	▽=0	mm INCH	IN/MM	1:1	METRIC	
	▽=0	4 PLACES ± --- ± ---	DRAWN BY DATE	TITLE MINI FIT JR VERTICAL HEADER ASSEMBLIES WITHOUT PEGS		
	▽=0	3 PLACES ± --- ± .005	H.HIRAMOTO '89/04/03			
	2 PLACES ± .13 ± .010	CHECKED BY DATE	MOLEX INCORPORATED MATERIAL NO. DOCUMENT NO. SHEET NO.			
	1 PLACE ± .25 ± ---	M.FUKUSHIMA '94/04/20				
	ANGULAR ± 3°	APPROVED BY DATE	SD-5566-002 2 OF 5			
		FSMITH 2012/05/04				
DRAFT WHERE APPLICABLE MUST REMAIN WITHIN DIMENSIONS		SEE TABLE	THIS DRAWING CONTAINS INFORMATION THAT IS PROPRIETARY TO MOLEX INCORPORATED AND SHOULD NOT BE USED WITHOUT WRITTEN PERMISSION			



Distributor of Molex Connector Corporation: Excellent Integrated System Limited

Datasheet of 39-29-0143 - CONN HEADER 14POS 4.2MM STR GOLD

Contact us: sales@integrated-circuit.com Website: www.integrated-circuit.com

13	12	11	10	9	8	7	6	5	4	3	2	1
39-30-9247	5566-24BGS2-210	39-31-0248	5566-24BGS-210	39-31-0242	5566-24BS-210	39-31-0240	5566-24B-210	39-30-6224	5566-24APBS-210	24		
↑ -9227	↑ -22BGS2-210	↑ -0228	↑ -22BGS-210	↑ -0222	↑ -22BS-210	↑ -0220	↑ -22B-210	↑ -6224	↑ -22APBS-210	22		
↑ -9207	↑ -20BGS2-210	↑ -0208	↑ -20BGS-210	↑ -0202	↑ -20BS-210	↑ -0200	↑ -20B-210	↑ -6204	↑ -20APBS-210	20		
↑ -9187	↑ -18BGS2-210	↑ -0188	↑ -18BGS-210	↑ -0182	↑ -18BS-210	↑ -0180	↑ -18B-210	↑ -6184	↑ -18APBS-210	18		
↑ -9167	↑ -16BGS2-210	↑ -0168	↑ -16BGS-210	↑ -0162	↑ -16BS-210	↑ -0160	↑ -16B-210	↑ -6164	↑ -16APBS-210	16		
↑ -9147	↑ -14BGS2-210	↑ -0148	↑ -14BGS-210	↑ -0142	↑ -14BS-210	↑ -0140	↑ -14B-210	↑ -6144	↑ -14APBS-210	14		
↑ -9127	↑ -12BGS2-210	↑ -0128	↑ -12BGS-210	↑ -0122	↑ -12BS-210	↑ -0120	↑ -12B-210	↑ -6124	↑ -12APBS-210	12		
↑ -9107	↑ -10BGS2-210	↑ -0108	↑ -10BGS-210	↑ -0102	↑ -10BS-210	↑ -0100	↑ -10B-210	↑ -6104	↑ -10APBS-210	10		
↑ -9087	↑ -08BGS2-210	↑ -0088	↑ -08BGS-210	↑ -0082	↑ -08BS-210	↑ -0080	↑ -08B-210	↑ -6084	↑ -08APBS-210	8		
↑ -9067	↑ -06BGS2-210	↑ -0068	↑ -06BGS-210	↑ -0062	↑ -06BS-210	↑ -0060	↑ -06B-210	↑ -6064	↑ -06APBS-210	6		
↓ -9047	↓ -04BGS2-210	↓ -0048	↓ -04BGS-210	↓ -0042	↓ -04BS-210	↓ -0040	↓ -04B-210	↓ -6044	↓ -04APBS-210	4		
39-30-9027	5566-02BGS2-210	39-31-0028	5566-02BGS-210	39-31-0022	5566-02BS-210	39-31-0020	5566-02B-210	39-30-6024	5566-02APBS-210	2		
EDP NO.	ENG. NO.	EDP NO.	ENG. NO.	EDP NO.	ENG. NO.	EDP NO.	ENG. NO.	EDP NO.	ENG. NO.			CKT. SIZE
5566-NBGS2-210		5566-NBGS-210		5566-NBS-210		5566-NB-210		5566-NAPBS-210				
39-30-9246	5566-24BGS2	39-31-0247	5566-24BGS	39-31-0241	5566-24BS	39-29-3246	5566-24B	39-30-6243	5566-24APBS	24		
↑ -9226	↑ -22BGS2	↑ -0227	↑ -22BGS	↑ -0221	↑ -22BS	↑ -3226	↑ -22B	↑ -6223	↑ -22APBS	22		
↑ -9206	↑ -20BGS2	↑ -0207	↑ -20BGS	↑ -0201	↑ -20BS	↑ -3206	↑ -20B	↑ -6203	↑ -20APBS	20		
↑ -9186	↑ -18BGS2	↑ -0187	↑ -18BGS	↑ -0181	↑ -18BS	↑ -3186	↑ -18B	↑ -6183	↑ -18APBS	18		
↑ -9166	↑ -16BGS2		↑ -16BGS	↑ -0161	↑ -16BS	↑ -3166	↑ -16B	↑ -6163	↑ -16APBS	16		
↑ -9146	↑ -14BGS2	↑ -0147	↑ -14BGS	↑ -0141	↑ -14BS	↑ -3146	↑ -14B	↑ -6143	↑ -14APBS	14		
↑ -9126	↑ -12BGS2	↑ -0127	↑ -12BGS	↑ -0121	↑ -12BS	↑ -3126	↑ -12B	↑ -6123	↑ -12APBS	12		
↑ -9106	↑ -10BGS2	↑ -0107	↑ -10BGS	↑ -0101	↑ -10BS	↑ -3106	↑ -10B	↑ -6103	↑ -10APBS	10		
↑ -9086	↑ -08BGS2	↑ -0087	↑ -08BGS	↑ -0081	↑ -08BS	↑ -3086	↑ -08B	↑ -6083	↑ -08APBS	8		
↑ -9066	↑ -06BGS2	↑ -0067	↑ -06BGS	↑ -0061	↑ -06BS	↑ -3066	↑ -06B	↑ -6063	↑ -06APBS	6		
↓ -9046	↓ -04BGS2	↓ -0047	↓ -04BGS	↓ -0041	↓ -04BS	↓ -3046	↓ -04B	↓ -6043	↓ -04APBS	4		
39-30-9026	5566-02BGS2	39-31-0027	5566-02BGS	39-31-0021	5566-02BS	39-29-3026	5566-02B	39-30-6023	5566-02APBS	2		
EDP NO.	ENG. NO.	EDP NO.	ENG. NO.	EDP NO.	ENG. NO.	EDP NO.	ENG. NO.	EDP NO.	ENG. NO.			CKT. SIZE
5566-NBGS2		5566-NBGS		5566-NBS		5566-NB		5566-NAPBS				
39-31-0245	5566-24BPBS	39-31-0243	5566-24BPB	39-31-0246	5566-24BPBS-210	39-31-0244	5566-24BPB-210	39-31-0244	5566-24BPB-210	24		
↑ -0225	↑ -22BPBS	↑ -0223	↑ -22BPB	↑ -0226	↑ -22BPBS-210	↑ -0224	↑ -22BPB-210	↑ -0224	↑ -22BPB-210	22		
↑ -0205	↑ -20BPBS	↑ -0203	↑ -20BPB	↑ -0206	↑ -20BPBS-210	↑ -0204	↑ -20BPB-210	↑ -0204	↑ -20BPB-210	20		
↑ -0185	↑ -18BPBS	↑ -0183	↑ -18BPB	↑ -0186	↑ -18BPBS-210	↑ -0184	↑ -18BPB-210	↑ -0184	↑ -18BPB-210	18		
↑ -0165	↑ -16BPBS	↑ -0163	↑ -16BPB	↑ -0166	↑ -16BPBS-210	↑ -0164	↑ -16BPB-210	↑ -0164	↑ -16BPB-210	16		
↑ -0145	↑ -14BPBS	↑ -0143	↑ -14BPB	↑ -0146	↑ -14BPBS-210	↑ -0144	↑ -14BPB-210	↑ -0144	↑ -14BPB-210	14		
↑ -0125	↑ -12BPBS	↑ -0123	↑ -12BPB	↑ -0126	↑ -12BPBS-210	↑ -0124	↑ -12BPB-210	↑ -0124	↑ -12BPB-210	12		
↑ -0105	↑ -10BPBS	↑ -0103	↑ -10BPB	↑ -0106	↑ -10BPBS-210	↑ -0104	↑ -10BPB-210	↑ -0104	↑ -10BPB-210	10		
↑ -0085	↑ -08BPBS	↑ -0083	↑ -08BPB	↑ -0086	↑ -08BPBS-210	↑ -0084	↑ -08BPB-210	↑ -0084	↑ -08BPB-210	8		
↑ -0065	↑ -06BPBS	↑ -0063	↑ -06BPB	↑ -0066	↑ -06BPBS-210	↑ -0064	↑ -06BPB-210	↑ -0064	↑ -06BPB-210	6		
↓ -0045	↓ -04BPBS	↓ -0043	↓ -04BPB	↓ -0046	↓ -04BPBS-210	↓ -0044	↓ -04BPB-210	↓ -0044	↓ -04BPB-210	4		
39-31-0025	5566-02BPBS	39-31-0023	5566-02BPB	39-31-0026	5566-02BPBS-210	39-31-0024	5566-02BPB-210	39-31-0024	5566-02BPB-210	2		
EDP NO.	ENG. NO.	EDP NO.	ENG. NO.	EDP NO.	ENG. NO.	EDP NO.	ENG. NO.	EDP NO.	ENG. NO.			CKT. SIZE
5566-NBPBS		5566-NBPB		5566-NBPBS-210		5566-NBPB-210						

PARTS WITH DRAIN HOLES

SEE SHEET 1 EC NO: UCP2014-212 2013/11/13 DRAWING CHKO: BELL 2013/11/13 APPROV: SMITH 2013/11/13 L7 REV	QUALITY SYMBOLS 	GENERAL TOLERANCES (UNLESS SPECIFIED)		DIMENSION STYLE		SCALE	DESIGN UNITS	THIRD ANGLE PROJECTION	
				IN/MM		1:1	METRIC		
		4 PLACES ± --- ± ---		DRAWN BY H.HIRAMOTO DATE '89/04/03		TITLE MINI FIT JR VERTICAL HEADER ASSEMBLIES WITHOUT PEGS MOLEX INCORPORATED			
		3 PLACES ± --- ± .005		CHECKED BY M.FUKUSHIMA DATE '94/04/20					
2 PLACES ± .13 ± .010		APPROVED BY F.SMITH DATE 2012/05/04		MATERIAL NO. SEE TABLE DOCUMENT NO. SD-5566-002 SHEET NO. 3 OF 5					
1 PLACE ± .25 ± ---		ANGULAR ± 3°		DRAFT WHERE APPLICABLE MUST REMAIN WITHIN DIMENSIONS THIS DRAWING CONTAINS INFORMATION THAT IS PROPRIETARY TO MOLEX INCORPORATED AND SHOULD NOT BE USED WITHOUT WRITTEN PERMISSION					

[TRAY PACKED PART NUMBERS]

PARTS WITHOUT DRAIN HOLES					39-53-9249	5566-24A-210-TA	39-53-9248	5566-24A-TA	24	
						↑ -22A-210-TA	↑ -9228	↑ -22A-TA	22	
							↑ -20A-210-TA	↑ -9208	↑ -20A-TA	20
			39-34-1180	5566-18A-210-TR			↑ -18A-210-TA	↑ -9188	↑ -18A-TA	18
							↑ -16A-210-TA	↑ -9168	↑ -16A-TA	16
							↑ -14A-210-TA	↑ -9148	↑ -14A-TA	14
							↑ -12A-210-TA	↑ -9128	↑ -12A-TA	12
							↑ -10A-210-TA	↑ -9108	↑ -10A-TA	10
							↑ -08A-210-TA	↑ -9088	↑ -08A-TA	8
		46999-0630	5566-06AGS2-BL-TA				↑ -06A-210-TA	↑ -9068	↑ -06A-TA	6
	46999-0629	5566-04AGS2-BL-TA				↑ -04A-210-TA	↑ -9048	↑ -04A-TA	4	
	EDP NO.	ENG. NO.	EDP NO.	ENG. NO.	EDP NO.	ENG. NO.	EDP NO.	ENG. NO.	CKT. SIZE	
	5566-NAGS2-BL-TA		5566-NA-210-TR		5566-NA-210-TA		39-53-9028		5566-02A-TA	2

SEE SHEET 1 EC NO: UCP204-212 DRAWING NO: 2013/11/13 CHKD: BELL APPR: SMITH	L7	DESCRIPTION	QUALITY SYMBOLS	GENERAL TOLERANCES (UNLESS SPECIFIED)	DIMENSION STYLE	SCALE	DESIGN UNITS	THIRD ANGLE PROJECTION	
			▽=0	mm INCH	IN/MM	1:1	METRIC	☉	
			▽=0	4 PLACES ± --- ± ---	DRAWN BY DATE	TITLE			MOLEX INCORPORATED
			▽=0	3 PLACES ± --- ± .005	H.HIRAMOTO '89/04/03	MINI FIT JR VERTICAL HEADER ASSEMBLIES WITHOUT PEGS			
▽=0	2 PLACES ± 13 ± .010	CHECKED BY DATE	MATERIAL NO.			DOCUMENT NO.	SHEET NO.		
		1 PLACE ± 25 ± ---	1 APPROVED BY DATE	F5M1TH 2012/05/04			SD-5566-002	5 OF 5	
		ANGULAR ± 3 °		SEE TABLE					
				DRAFT WHERE APPLICABLE MUST REMAIN WITHIN DIMENSIONS					
				SIZE C THIS DRAWING CONTAINS INFORMATION THAT IS PROPRIETARY TO MOLEX INCORPORATED AND SHOULD NOT BE USED WITHOUT WRITTEN PERMISSION					