

Excellent Integrated System Limited

Stocking Distributor

Click to view price, real time Inventory, Delivery & Lifecycle Information:

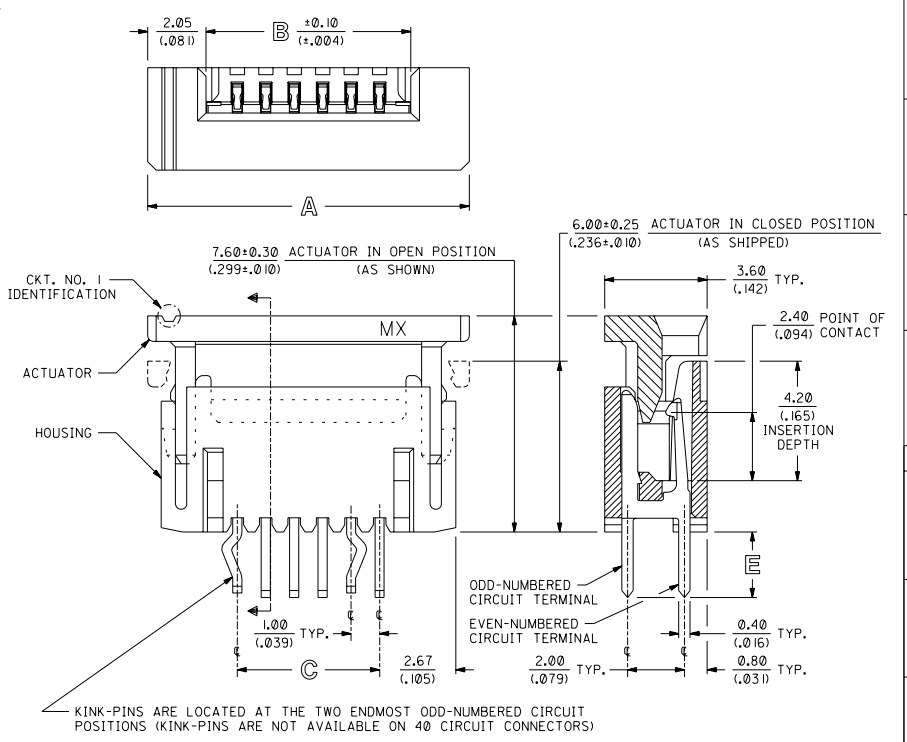
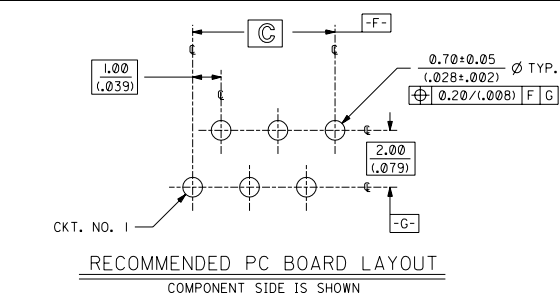
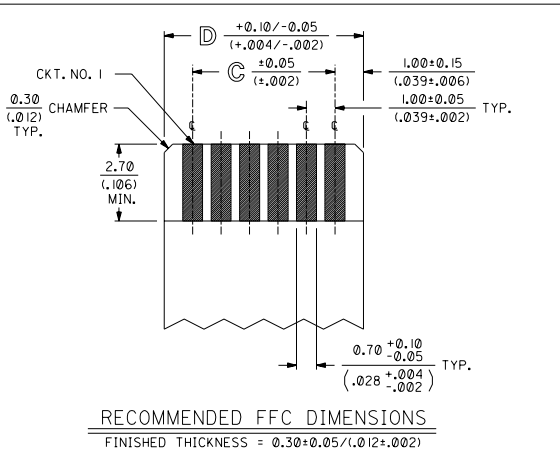
[Molex Connector Corporation](#)
[71226-0625](#)

For any questions, you can email us directly:

sales@integrated-circuit.com

NOTES:

- CONNECTOR MATERIALS:
HOUSING IS MADE OF NYLON (SEE CHART ON SHEET 2 FOR COLOR) AND ACTUATOR IS MADE OF LCP (LIQUID CRYSTAL POLYMER) (COLOR IS BLUE), BOTH ARE GLASS-FILLED AND RATED U.L. 94V-0; TERMINALS ARE 0.32/(.013) THICK PHOSPHOR BRONZE.
- TERMINAL FINISH:
5.0 MICROMETERS/200 MICROINCHES MINIMUM TIN OVER 1.3 MICROMETERS/ 50 MICROINCHES MINIMUM NICKEL UNDERPLATE OVERALL.
- THIS CONNECTOR CONFORMS TO PRODUCT SPECIFICATION PS-71226.
- SEE SHEET 2 FOR CONNECTOR PART NUMBERS, PACKAGING OPTIONS, AND DIMENSIONS NOT SHOWN BELOW.



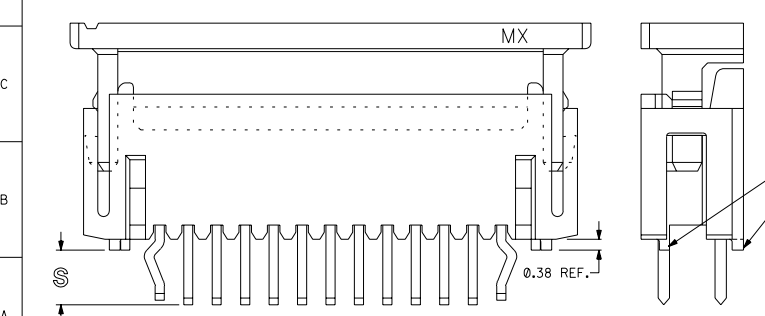
KINK-PINS ARE LOCATED AT THE TWO ENDMOST ODD-NUMBERED CIRCUIT POSITIONS (KINK-PINS ARE NOT AVAILABLE ON 40 CIRCUIT CONNECTORS)

NOTE FOR LEAD FREE CONVERSION:
THE PRIMARY SHIPPING CARTON WILL BE LABELED "COMPLIANT TO ROHS DIRECTIVE 2002/95/EC AND ELV ANNEX II OF DIRECTIVE 2000/53/EC". CARTONS WITHOUT THIS LABEL MAY CONTAIN PRODUCT WITH LEAD.

DIMENSIONS SHOWN METRIC/(INCHES)		TITLE	
1.00mm/(.039) PITCH, ZIF, FFC CONNECTOR		REVISE ONLY ON CAD SYSTEM	
MOLEX INCORPORATED		SHEET NO. DATE	
SEE SHEET 2		1 OF 2 12/16/92	
PART NO. SD-71226-***5		DRWG. NO.	
FILE NAME SD7122601		COPR. ©	
THIS DRAWING CONTAINS INFORMATION THAT IS PROPRIETARY TO MOLEX, INC. AND SHOULD NOT BE USED WITHOUT WRITTEN PERMISSION.		COPR. ©	

LTR.	REVISIONS	LTR.	REVISIONS	LTR.	REVISIONS

CKT SIZE	ITEM NUMBER	HOUSING COLOR	X=NOT TOOLED	DIM A	DIM B	DIM C	DIM D	DIM E
J	4	71226-0425	NATURAL	9.30/(.366)	5.20/(.205)	3.00/(.118)	5.00/(.197)	2.25±0.20 (.089±.008)
J	6	71226-0625	NATURAL	11.30/(.445)	7.20/(.283)	5.00/(.197)	7.00/(.276)	
J	8	71226-0825	NATURAL	13.30/(.524)	9.20/(.362)	7.00/(.276)	9.00/(.354)	
I	10	71226-1025	NATURAL	15.30/(.602)	11.20/(.441)	9.00/(.354)	11.00/(.433)	
I	12	71226-1225	NATURAL	17.30/(.681)	13.20/(.520)	11.00/(.433)	13.00/(.512)	
I	14	71226-1425	NATURAL	19.30/(.760)	15.20/(.598)	13.00/(.512)	15.00/(.591)	
I	16	71226-1625	NATURAL	21.30/(.839)	17.20/(.677)	15.00/(.591)	17.00/(.669)	
I	18	71226-1825	NATURAL	23.30/(.917)	19.20/(.756)	17.00/(.669)	19.00/(.748)	
H	20	71226-2025	NATURAL	25.30/(.996)	21.20/(.835)	19.00/(.748)	21.00/(.827)	
H	22	71226-2225	NATURAL	27.30/(1.075)	23.20/(.913)	21.00/(.827)	23.00/(.906)	
H	24	71226-2425	NATURAL	29.30/(1.154)	25.20/(.992)	23.00/(.906)	25.00/(.984)	
H	26	71226-2625	NATURAL	31.30/(1.232)	27.20/(1.071)	25.00/(.984)	27.00/(1.063)	
H	28	71226-2825	NATURAL	33.30/(1.311)	29.20/(1.150)	27.00/(1.063)	29.00/(1.142)	
H	30	71226-3025	NATURAL	35.30/(1.390)	31.20/(1.228)	29.00/(1.142)	31.00/(1.220)	
H	40	71226-4025	NATURAL	X 45.30/(1.783)	41.20/(1.622)	39.00/(1.536)	41.00/(1.614)	
G	4	71226-0435	NATURAL	9.30/(.366)	5.20/(.205)	3.00/(.118)	5.00/(.197)	3.15±0.20 (.124±.008)
G	6	71226-0635	NATURAL	11.30/(.445)	7.20/(.283)	5.00/(.197)	7.00/(.276)	
G	8	71226-0835	NATURAL	13.30/(.524)	9.20/(.362)	7.00/(.276)	9.00/(.354)	
F	10	71226-1035	NATURAL	15.30/(.602)	11.20/(.441)	9.00/(.354)	11.00/(.433)	
F	12	71226-1235	NATURAL	17.30/(.681)	13.20/(.520)	11.00/(.433)	13.00/(.512)	
F	14	71226-1435	NATURAL	19.30/(.760)	15.20/(.598)	13.00/(.512)	15.00/(.591)	
F	16	71226-1635	NATURAL	21.30/(.839)	17.20/(.677)	15.00/(.591)	17.00/(.669)	
F	18	71226-1835	NATURAL	23.30/(.917)	19.20/(.756)	17.00/(.669)	19.00/(.748)	
F	20	71226-2035	NATURAL	25.30/(.996)	21.20/(.835)	19.00/(.748)	21.00/(.827)	
F	22	71226-2235	NATURAL	27.30/(1.075)	23.20/(.913)	21.00/(.827)	23.00/(.906)	
E	24	71226-2435	NATURAL	29.30/(1.154)	25.20/(.992)	23.00/(.906)	25.00/(.984)	
E	26	71226-2635	NATURAL	31.30/(1.232)	27.20/(1.071)	25.00/(.984)	27.00/(1.063)	
E	28	71226-2835	NATURAL	33.30/(1.311)	29.20/(1.150)	27.00/(1.063)	29.00/(1.142)	
E	30	71226-3035	NATURAL	35.30/(1.390)	31.20/(1.228)	29.00/(1.142)	31.00/(1.220)	
E	40	71226-4035	NATURAL	X 45.30/(1.783)	41.20/(1.622)	39.00/(1.536)	41.00/(1.614)	
D	26	71226-2675	NATURAL	31.30/(1.232)	27.20/(1.071)	25.00/(.984)	27.00/(1.063)	2.77±0.20 (.109±.008)



STAND-OFF OPTION (71226-2675 SHOWN)
SEE SHEET I FOR DIMENSION NOT SHOWN

PACKAGED IN TRAYS PER PK-70873-0246

F SEE SHEET I		B SEE SHEET I		DIMS. SHOWN METRIC/INCH		MFG. SH. REV.																		
D SEE SHEET I		A I SEE SHEET I		UNLESS OTHERWISE SPECIFIED TOLERANCES ARE AS SHOWN		REVISE ONLY ON CAD SYSTEM																		
C I SEE SHEET I		A SEE SHEET I		<table border="1"> <tr><th>PLACES</th><th>INCH</th><th>METRIC</th></tr> <tr><td>1 PLACE</td><td>± .005</td><td>± .005</td></tr> <tr><td>2 PLACE</td><td>± .004</td><td>± .004</td></tr> <tr><td>3 PLACE</td><td>± .003</td><td>± .003</td></tr> </table>		PLACES	INCH	METRIC	1 PLACE	± .005	± .005	2 PLACE	± .004	± .004	3 PLACE	± .003	± .003	<table border="1"> <tr><td>MOLEX INCORPORATED</td><td>SHEET NO. 2</td><td>DATE 12/16/92</td></tr> <tr><td>LEVEL: 00032</td><td>00032</td><td>U.S.A.</td></tr> </table>	MOLEX INCORPORATED	SHEET NO. 2	DATE 12/16/92	LEVEL: 00032	00032	U.S.A.
PLACES	INCH	METRIC																						
1 PLACE	± .005	± .005																						
2 PLACE	± .004	± .004																						
3 PLACE	± .003	± .003																						
MOLEX INCORPORATED	SHEET NO. 2	DATE 12/16/92																						
LEVEL: 00032	00032	U.S.A.																						
LTR. REVISIONS		LTR. REVISIONS		<table border="1"> <tr><td>DRG. NO. SD71226-0625</td><td>GLT</td><td>BY</td><td>CAB</td></tr> <tr><td>APP'D. CAB</td><td>SCALE</td><td>:</td><td></td></tr> </table>		DRG. NO. SD71226-0625	GLT	BY	CAB	APP'D. CAB	SCALE	:		<table border="1"> <tr><td colspan="2">PART NO. SEE CHART</td><td>DRG. NO. SD-71226-***5</td></tr> <tr><td colspan="2">FILE NAME SD71226-0625</td><td>REV. 00032</td></tr> <tr><td colspan="2">THIS DRAWING CONTAINS INFORMATION THAT IS PROPRIETARY TO MOLEX INC. AND SHOULD NOT BE USED WITHOUT WRITTEN PERMISSION.</td><td>DRG. TITLE CONN FFC VERT 6POS 1.00MM PCB</td></tr> </table>	PART NO. SEE CHART		DRG. NO. SD-71226-***5	FILE NAME SD71226-0625		REV. 00032	THIS DRAWING CONTAINS INFORMATION THAT IS PROPRIETARY TO MOLEX INC. AND SHOULD NOT BE USED WITHOUT WRITTEN PERMISSION.		DRG. TITLE CONN FFC VERT 6POS 1.00MM PCB	
DRG. NO. SD71226-0625	GLT	BY	CAB																					
APP'D. CAB	SCALE	:																						
PART NO. SEE CHART		DRG. NO. SD-71226-***5																						
FILE NAME SD71226-0625		REV. 00032																						
THIS DRAWING CONTAINS INFORMATION THAT IS PROPRIETARY TO MOLEX INC. AND SHOULD NOT BE USED WITHOUT WRITTEN PERMISSION.		DRG. TITLE CONN FFC VERT 6POS 1.00MM PCB																						