

Excellent Integrated System Limited

Stocking Distributor

Click to view price, real time Inventory, Delivery & Lifecycle Information:

[Panasonic Electronic Components](#)
[EEC-HW0D475](#)

For any questions, you can email us directly:

sales@integrated-circuit.com

Panasonic

Electric Double Layer Capacitors(Gold Capacitor)/HW

Radial lead Type

Series: HW

Country of Origin

Japan

■ Feature

- The smallest size and high-capacitance, low-resistance
- Can be charged and discharged more times than secondary batteries
- Pollution free operation since the activated carbon and organic electrolyte are used as main materials
- Polyvinyl chloride and lead are not in use

■ Recommended Applications

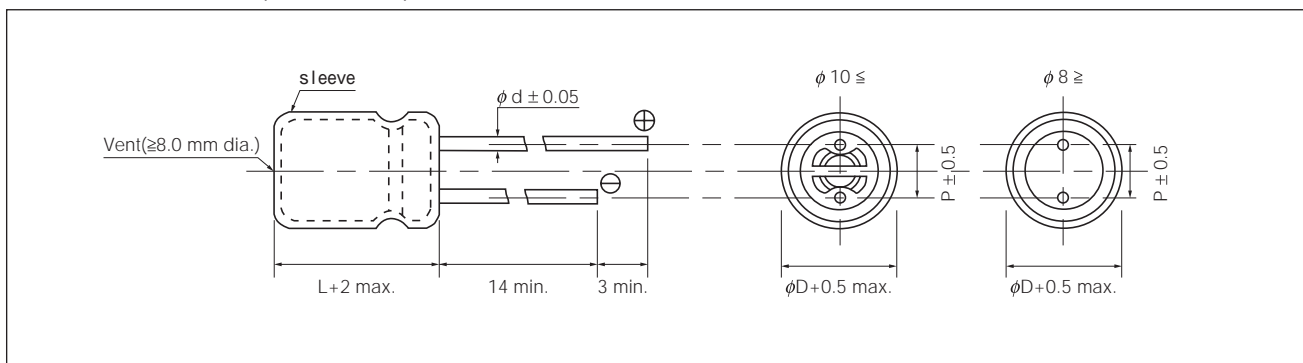
- Solar battery circuit(e.g. Road guidance flasher)
- Quick charge motor drive through quick charge(e.g. Toy car)
- Back-up Power Supplies(e.g. UPS)



■ Specifications

| | | | | |
|------------------------------------|---|---|--------------|--|
| Category temp. range | -25 to +70°C | | -25 to +60°C | |
| Maximum Operating Voltage | 2.3 V .DC | | 2.3 V .DC | |
| Nominal Cap. Range | 1 to 22 F | | 30, 50 F | |
| Capacitance Tolerance | -20 to +40% | | | |
| Characteristics at Low Temperature | Capacitance change | ±30% of initial measured value at +20°C (-25 to +70°C, +60°C) | | |
| | Internal resistance | ≤ 4 times of initial measured value at +20°C (at -25°C) | | |
| Endurance | After 1000 hours application of 2.3V. DC at +70°C(+60°C), the capacitor shall meet the following limits. | | | |
| | Capacitance change | ±30% of initial measured value | | |
| | Internal resistance | ≤ 2 time of initial specified value | | |
| Shelf Life | After 1000 hours storage at +70°C(+60°C) without load, the capacitor shall meet the specified limits for Endurance. | | | |
| Moisture Resistance | After 500 hours storage at +55°C, 90 to 95% R.H., the capacitor shall meet the specified limits for Endurance. | | | |

■ Dimensions in mm (not to scale)



■ Standard products

| Category temp. range (°C) | Max. Operating Voltage (V.DC) | Capacitance (F) | Internal resistance (Ω) at 1kHz | Size(mm) | | | | Part number | Min. Packaging QTY (pcs) |
|---------------------------|-------------------------------|-----------------|---------------------------------|----------|------|-----|-----|-------------|--------------------------|
| | | | | φD | L | φd | P | | |
| -25 to +70 | 2.3 | 1.0 | ≤ 1.0 | 8.0 | 22.0 | 0.7 | 3.5 | EECHW0D105 | 200 |
| | | 3.3 | ≤ 0.3 | 12.5 | 23.0 | 0.8 | 5.0 | EECHW0D335 | 200 |
| | | 4.7 | ≤ 0.3 | 12.5 | 23.0 | 0.8 | 5.0 | EECHW0D475 | 200 |
| | | 10 | ≤ 0.2 | 12.5 | 35.0 | 0.8 | 5.0 | EECHW0D106 | 100 |
| | | 22 | ≤ 0.1 | 18.0 | 35.0 | 0.8 | 7.5 | EECHW0D226 | 50 |
| -25 to +60 | | 30 | ≤ 0.1 | 18.0 | 35.0 | 0.8 | 7.5 | EECHW0D306 | 50 |
| | | 50 | ≤ 0.1 | 18.0 | 40.0 | 0.8 | 7.5 | EECHW0D506 | 50 |