

Excellent Integrated System Limited

Stocking Distributor

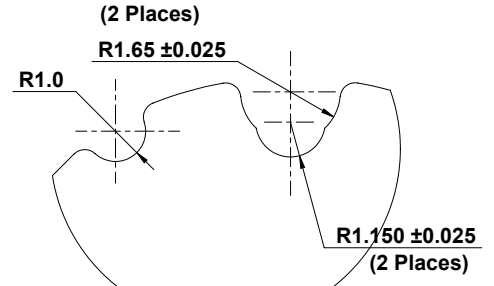
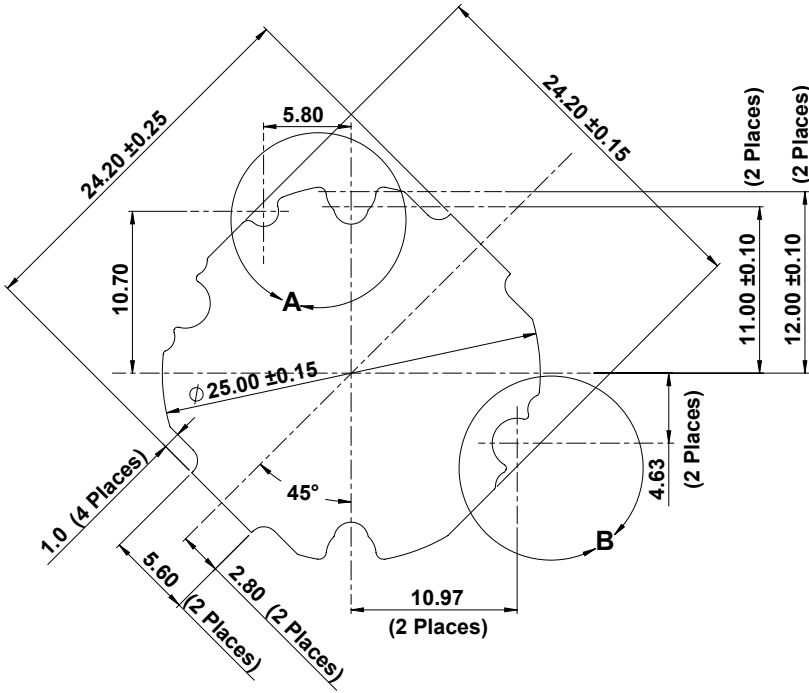
Click to view price, real time Inventory, Delivery & Lifecycle Information:

[t-Global Technology](#)

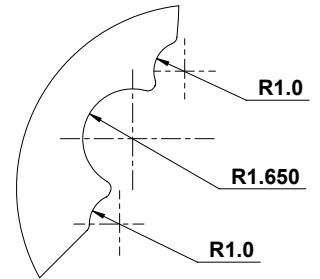
[LP0005/01-PC99AL-0.1](#)

For any questions, you can email us directly:

sales@integrated-circuit.com



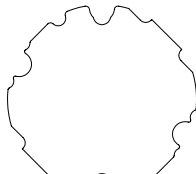
DETAIL A
SCALE 8 : 1
(2 Places)



DETAIL B
SCALE 8 : 1
(2 Places)



3D View
Scale:- 2:1



REFERENCE VIEW
Scale:- 2:1

| | | | | | | |
|---|--|--|---|--|------------------------------------|---|
| UNLESS OTHERWISE SPECIFIED: DIMENSIONS ARE IN MILLIMETERS SURFACE FINISH: TOLERANCES: LINEAR: ANGULAR: | | | t-Global Technology | | DO NOT SCALE DRAWING | REVISION |
| DRAWN L. Simpson | | | | | DATE 18 th July 2012 | LP0005/01-Material Ref.-Thickness(Tmm.) |
| CHK'D | | | Material t-Global Thermal Material PC99AL | | Ordering No. LP0005/01-PC99AL-0.12 | |
| APP'VD | | | Thickness T = 0.12mm. | | TITLE: Lumi- Pad | |
| MFG | | | DWG NO. LP0005/01-PC99AL-0.12 | | A3 | |
| Used On:- LUXEON L XK8-PWxx-0016 & 0012 | | | WEIGHT: | | SCALE: 4:1 | SHEET 1 OF 1 |