

## Excellent Integrated System Limited

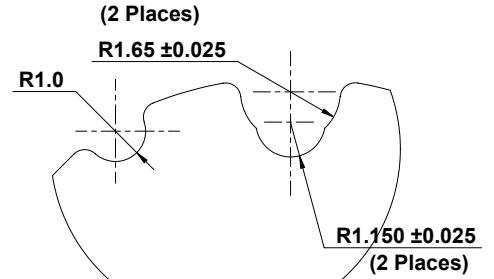
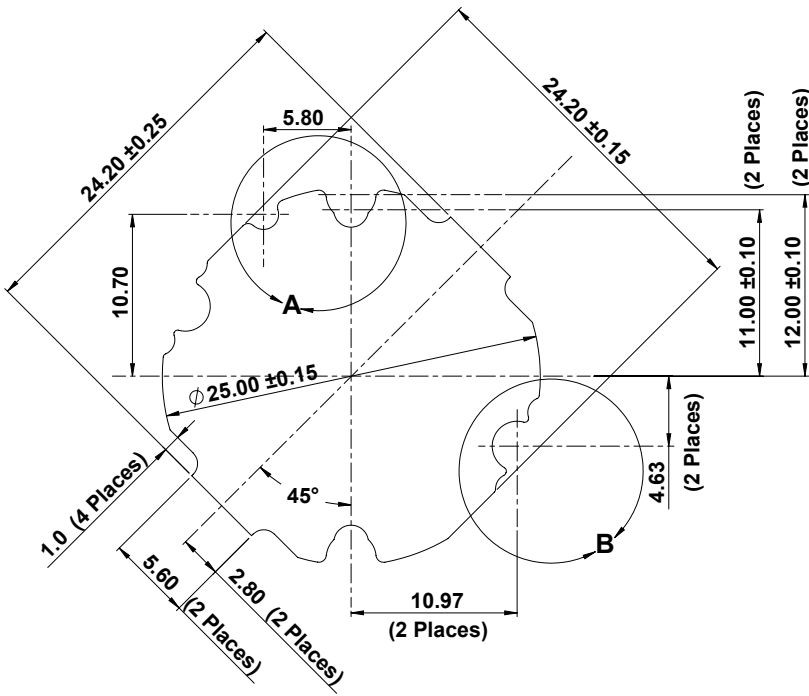
Stocking Distributor

Click to view price, real time Inventory, Delivery & Lifecycle Information:

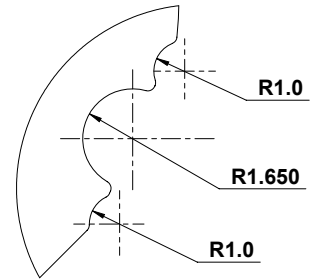
[t-Global Technology](#)  
[LP0005/01-L37-3F-0.45-2A](#)

For any questions, you can email us directly:

[sales@integrated-circuit.com](mailto:sales@integrated-circuit.com)



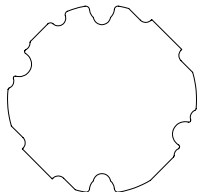
DETAIL A  
SCALE 8 : 1  
(2 Places)



DETAIL B  
SCALE 8 : 1  
(2 Places)



3D View  
Scale:- 2:1



REFERENCE VIEW  
Scale:- 2:1

UNLESS OTHERWISE SPECIFIED: DIMENSIONS ARE IN MILLIMETERS SURFACE FINISH: TOLERANCES: LINEAR: ANGULAR:			<b>t-Global Technology</b>		DO NOT SCALE DRAWING	REVISION
DRAWN <b>L. Simpson</b>			DATE 18 <sup>th</sup> July 2012		LP0005/01-Material Ref.-Thickness(Tmm.)	
CHK'D			Material <b>t-Global Thermal Material L37-3F</b>		Ordering No. LP0005/01-L37-3F-0.45-2A	
APP'VD			Thickness T = 0.45mm.		TITLE: <b>Lumi- Pad for LED Configuration</b>	
MFG			DWG NO. <b>LP0005/01-L37-3F-0.45-2A</b>		<b>A3</b>	
Used On:- LUXEON LXK8-PWxx-0016 & 0012			WEIGHT:		SCALE: 4:1	
					SHEET 1 OF 1	