

Excellent Integrated System Limited

Stocking Distributor

Click to view price, real time Inventory, Delivery & Lifecycle Information:

[Dialight](#)
[5977701107](#)

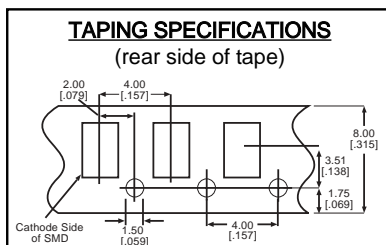
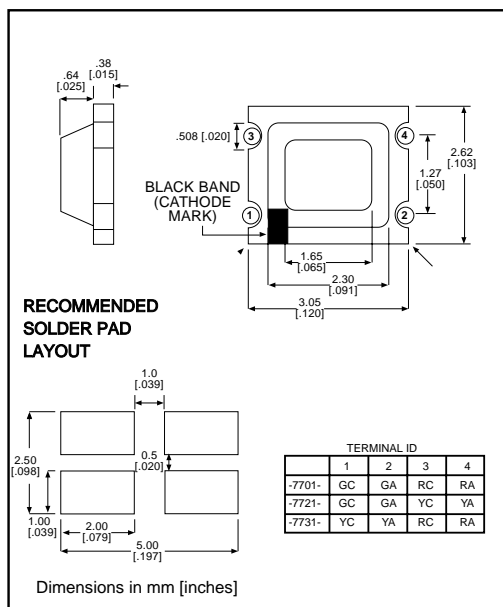
For any questions, you can email us directly:
sales@integrated-circuit.com

microLED[®]

**Surface Mount LED
Bi-Color**

Dialight

597-77x1-1xx



PART NO.*	COLOR
597-7701-1xx	Red/Green
597-7721-1xx	Yellow/Green
597-7731-1xx	Red/Yellow

Features

- Compatible with automatic placement equipment
- Compatible with infrared reflow processes
- Packaged on 8mm tape, 7" reels (meets EIA-481-1 standard)
- Helps to eliminate mixed technology PC board processing
- Compatible with Dialight's Optopipe™ Series light pipes

*ORDERING INFORMATION	
597-77x1-1xx	
packaging option →	
02	20 pieces on tape
07	7" reel, 3000 pcs/reel

ABSOLUTE MAXIMUM RATINGS (T_A=25°C)

	Red/Green -7701	Yellow/Green -7721	Red/Yellow -7731
Power Dissipation (mW)	65/65	70/65	65/70
Forward Current (mA)	25	25	25
Derating (mA/°C)	.33	.33	33
Peak Current (mA) <i>Pulse width = 1 μs</i>	100	100	100
Operating Temperature (°C)	-25/+75	-25/+75	-25/+75
Storage Temperature (°C)	-30/+85	-30/+85	-30/+85
Soldering Profile	240°C to 260°C for 10 seconds		

Solder Adherence per MIL-STD-202E, Method 208C

OPERATING CHARACTERISTICS (T_A=25°C)

		Red/Green -7701	Yellow/Green -7721	Red/Yellow -7731
Luminous Intensity (mcd)	Min.	1.6/6	3/6	1.6/3
	Typical	4/12	8/12	4/8
Peak Wavelength (nm)	Typical	630/565	585/565	630/585
Viewing Angle (2θ 1/2)	Typical	170°	170°	170°
Forward Voltage (V)	Typical	2/2	2.1/2	2/2.1
	Max.	2.6/2.6	2.8/2.6	2.6/2.8
Reverse Voltage (V), I _R =10μA	Min.	4	4	4

θ 1/2 is the off axis angle at which the luminous intensity is half the axial luminous intensity